

SCALE 1:50

## LEGEND:

1. PERGOLA WITH CANOPY AND MESH LIGHT
2. MODULAR BENCHES AND TABLES
3. RECLAIMED BRICKS/ STONE PAVER PATH
4. WOODEN DECK TILES PATH
5. GREEN LOUNGE AREA
6. DECORATIVE POND WITH WATER LILLIES
7. RECLAIMED CONCRETE PAVER
8. FINE GRAVEL/ SAND



## PLANTS LIST:

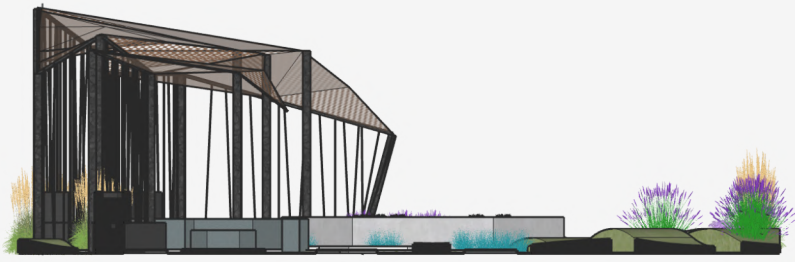
1. *Festuca glauca*
2. *Phlox subulata*
3. *Calamagrostis x acutiflora*
4. *Lavandula angustifolia*
5. *Sedum* ssp.
6. *Nymphaea leibergii*

In this garden, the theme of borders as fluid boundaries shapes an immersive and contemplative experience. The design integrates structured pathways and open green spaces, creating a layered, multifaceted landscape that invites visitors to explore the thresholds between defined spaces. The pergola-covered seating area offers a shaded retreat, while the hexagonal decorative pond acts as a visual and symbolic centerpiece, suggesting the serenity and fluidity of boundaries that shift with perspective.

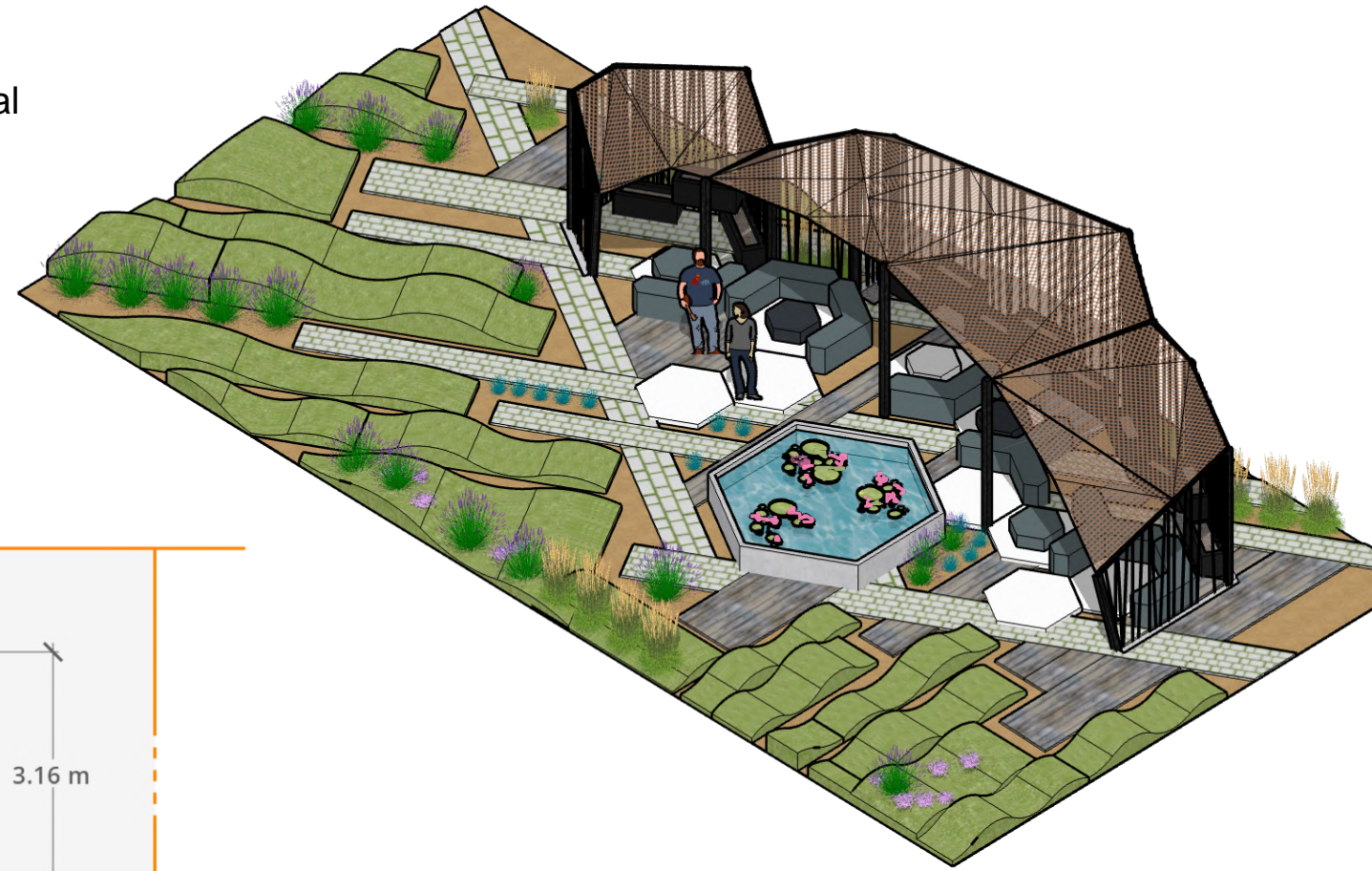
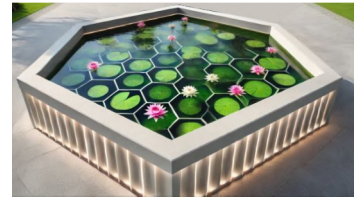
Visitors are encouraged to engage with the garden's elements through relaxation and reflection. The green spaces are ideal for sunbathing, allowing individuals to experience the contrast between structured and open areas. Through the juxtaposition of materials, textures, and spatial arrangements, the garden emphasizes the concept of borders as both separators and connectors. All the constructions are from sustainable reclaimed materials that can be integrated back into the nature. The hexagonal shapes represent the transition from natural organization to the modern urban technologically enhanced environment that surrounds us, opening up dialogue on the power and potential of borders as sites of connection and transformation.



Elevation view - left side  
Scale 1:100

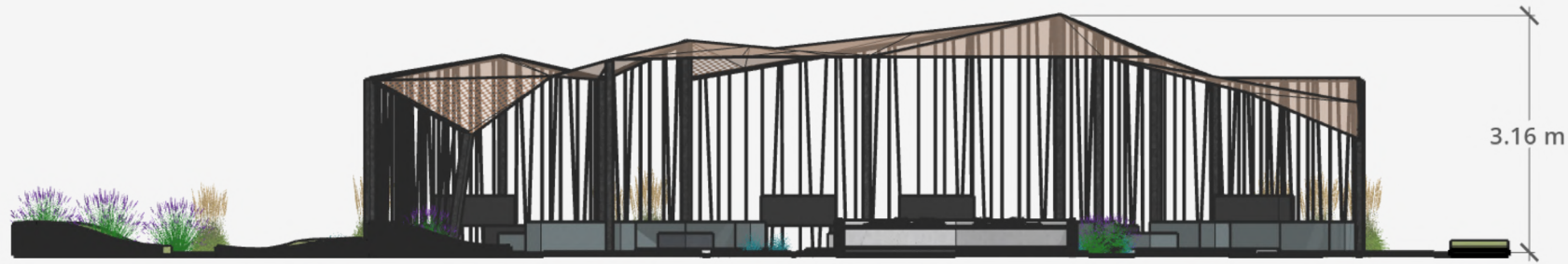


Renders of hexagonal elements: table and decorative pond



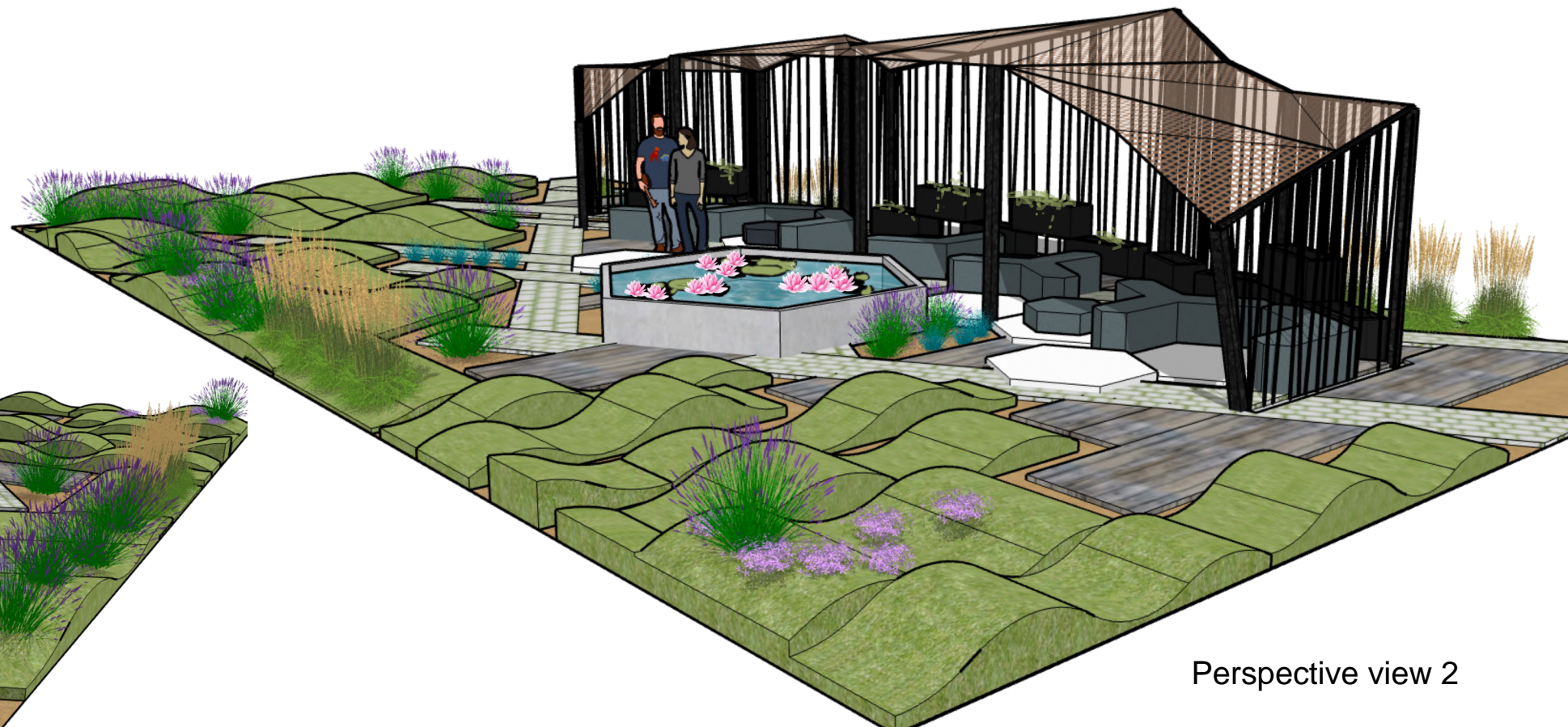
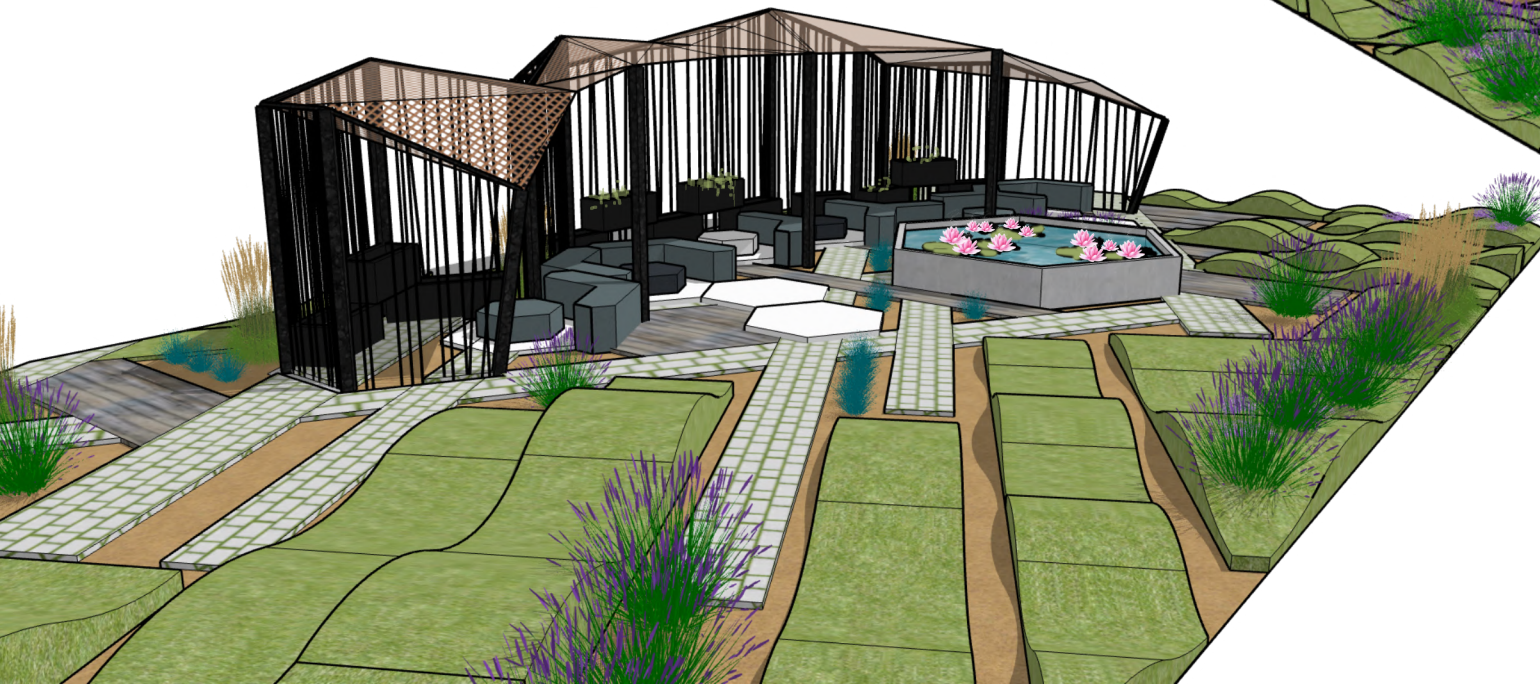
Isometric view

Elevation view - front side  
Scale 1:100



3.16 m

Perspective view 1



Perspective view 2