

Merged Boundaries

List of suggested plants:

Red blooms:

Spring: *Red Pasque Flower (Pulsatilla vulgaris)* | *Creeping Phlox (Phlox subulata)*- red wine
 Summer: *Bee Balm (Monarda didyma)*
 Autumn: *Red Blanket Flower (Gaillardia x grandiflora 'Arizona Red Shades')*

Blue blooms:

Spring: *Amsonia 'Storm Cloud' Bluestar (Amsonia tabernaemontana var. salicifolia)* | *Virginia Bluebells (Mertensia virginica)*
 Summer: *Bellflower 'Superba' (Campanula latifolia)*
 Autumn: *Caryopteris 'Dark Knight' (Caryopteris x clandonensis)*
 Year-Round: *Creeping Thyme (Thymus serpyllum)*- blue blooms

Yellow blooms:

Spring: *Golden Alyssum (Aurinia saxatilis)*
 Summer: *Coreopsis (Coreopsis verticillata)*
 Autumn: *Helenium (Sneezeweed) (Helenium autumnale)*

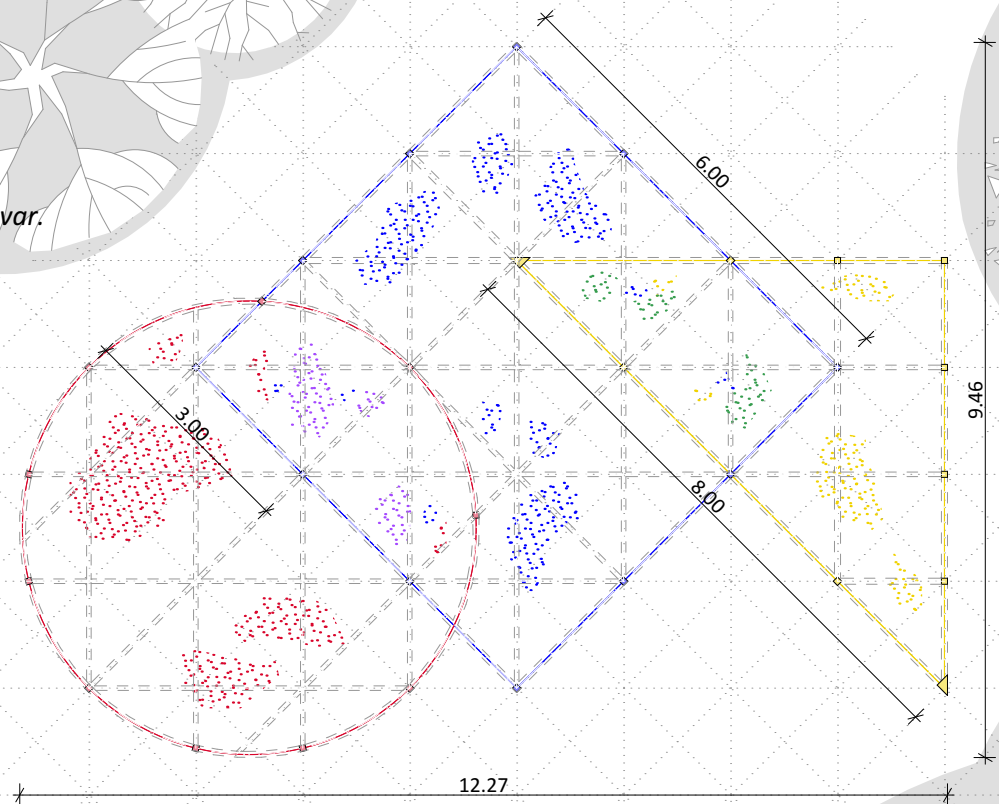
Purple blooms:

Spring: *Creeping Phlox (Phlox subulata)*-purple
 Summer: *Russian Sage (Perovskia atriplicifolia)* | *Catmint (Nepeta faassenii)*
 Autumn: *Aster 'Purple Dome' (Symphyotrichum novae-angliae)*

Green-leaf:

Spring: *Mountain Mint (Pycnanthemum muticum)*
 Summer: *Hellebore (Helleborus viridis)*
 Year-Round (Evergreen): *Creeping Thyme (Thymus serpyllum)*- white blooms

Note: In each room can be used *Creeping Thyme* in the respective room colour, as a year-round plant.
 The project is adaptable and can be installed in irregular garden rooms or in 20x10m plots.

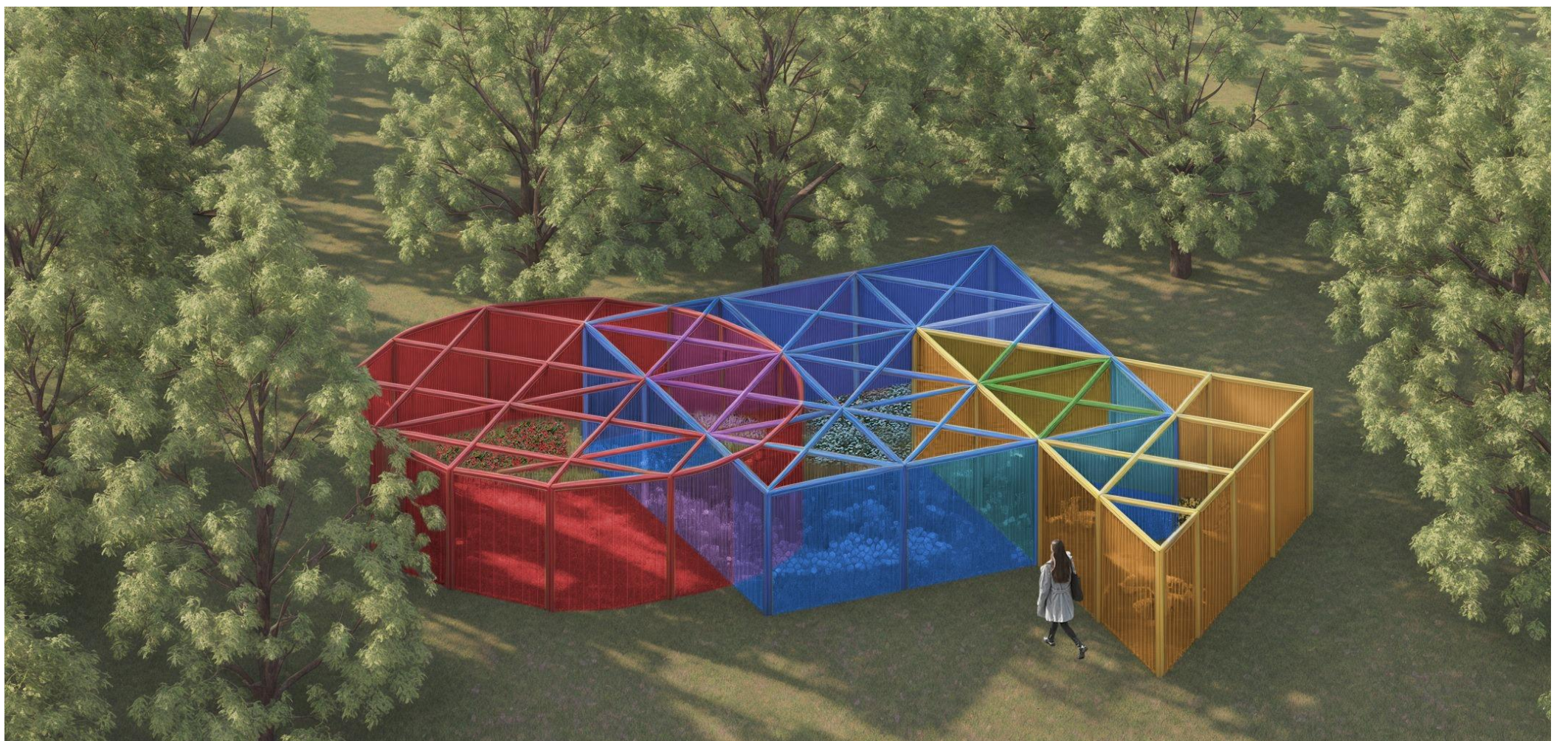


Plan
M=1:100

In this vibrant garden installation, the rigid boundaries dissolve into fluid transitions, responding to the festival's theme, "BORDERS." The installation presents a series of primary shapes-circle, triangle, and rectangle-each adorned with flowers in elementary colors: red, blue, and yellow. Framed by wooden beams and columns, the flexible, tinted PVC curtain walls create permeable borders that invite visitors to explore the beauty of interconnected spaces.

As visitors move from one shape to another, they encounter intersections where new hues emerge-purple and green-symbolizing the richness of diversity.

These transitional zones are enhanced with fragrant flowers, heightening the sensory experience of stepping beyond defined spaces. This journey through color and fragrance reminds us that human-made borders are often rigid and limiting, while nature thrives in fluidity and connection. By embracing diversity and blending boundaries, visitors are invited to reflect on how beauty often arises from unity, leaving with an appreciation of nature's seamless, interconnected world and a gentle reminder to respect only those borders that nature itself defines.



Merged Boundaries

Painted wooden beams
suggestion: main beams 8x8cm or 10x10cm
secondary beams 5x8cm

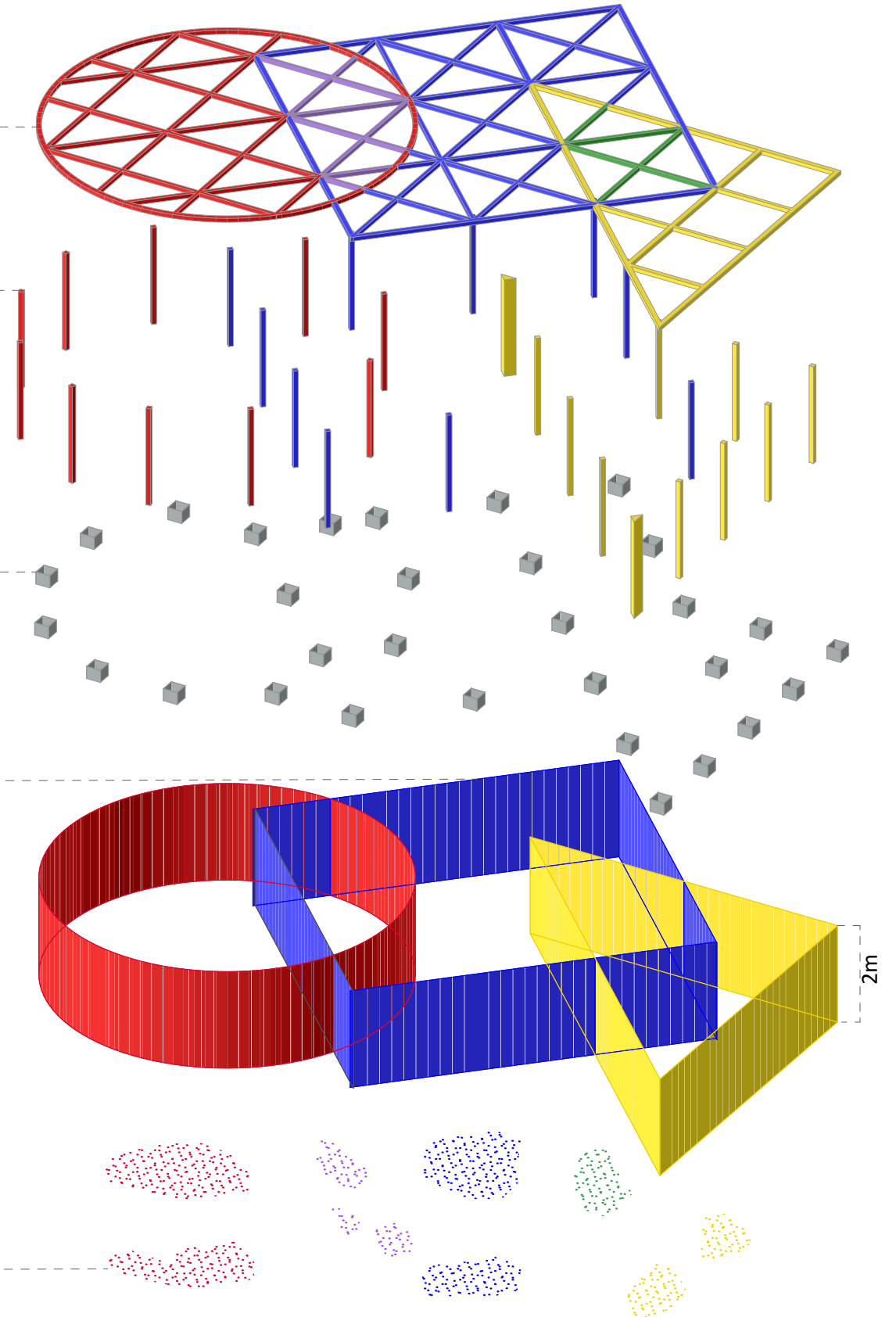
Painted wooden columns
suggestion: 8x8cm or 10x10cm

Underground
Concrete foundation, or metal cups filled with rocks, or a combination

PVC industrial curtain strips (20cm x 2m x 2-4mm)
Tinted (red, blue, yellow)
Placed in-between two beams placed side by side forming the main beam



Plant colour groups



Exploded axonometric view

