

INSIDE-OUT

The house and public world are in constant duality: The house is intimate and personalized, whereas the outside embodies the openness and unpredictability of public life and nature.

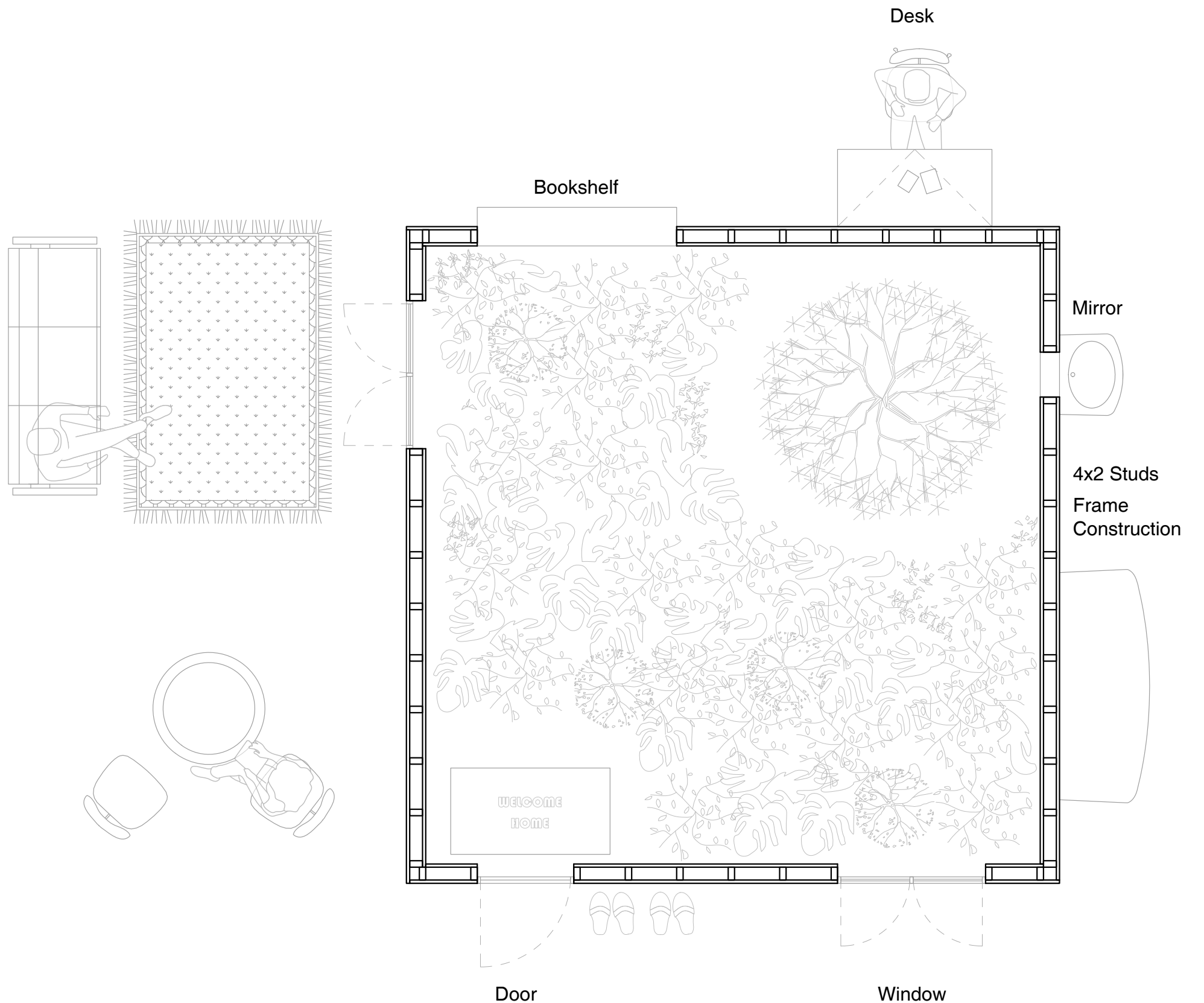
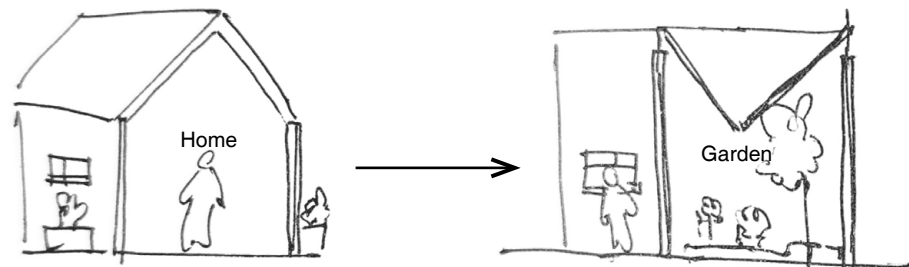
Utilizing this duality in order to challenge our conception of the public realm, the installation inverts this relationship, literally flipping a house inside out. Constructed by a simple frame system, the installation resurrects four walls, each defined by a house function: foyer, study, bath, and salon. Each function invites the guest to interact with it through doors, windows, as well as other furnishings as viewing devices. Through this interaction, the visitors discover what seems like an interior room actually is an exterior garden.

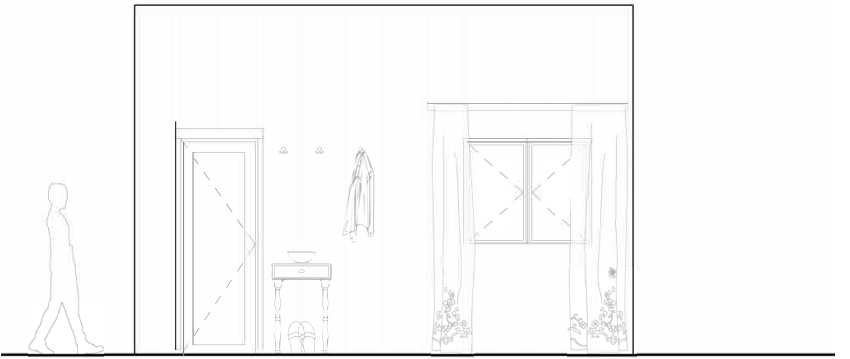
Thus, the duality is flipped. The borders of the house define the outside, whereas the inside is boundless, flowing seamlessly into the wider landscape of Metis Gardens. Disorienting our conception of inside and outside, this inversion brings intimacy, comfort, and playfulness to this large-scale public experience of Metis.

Suggested Plants:

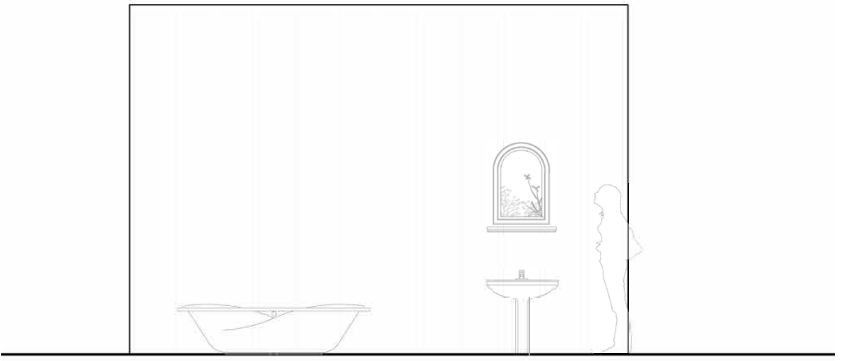
- New York Aster (*Symphyotrichum novi-belgii*)
- New England Aster (*Symphyotrichum novae-angliae*)
- White Panicked Aster (*Symphyotrichum lanceolatum*)
- Calico Aster (*Symphyotrichum lateriflorus*)
- Flat-topped White Aster (*Doellingaria umbellata*)
- Downy Goldenrod (*Solidago puberula*)
- Canada Goldenrod (*Solidago canadensis*)
- Philadelphia Fleabane (*Erigeron philadelphicus*)

Concept Diagram:

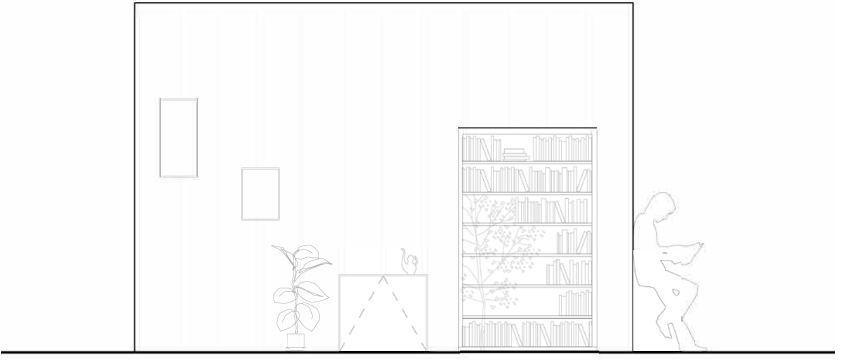




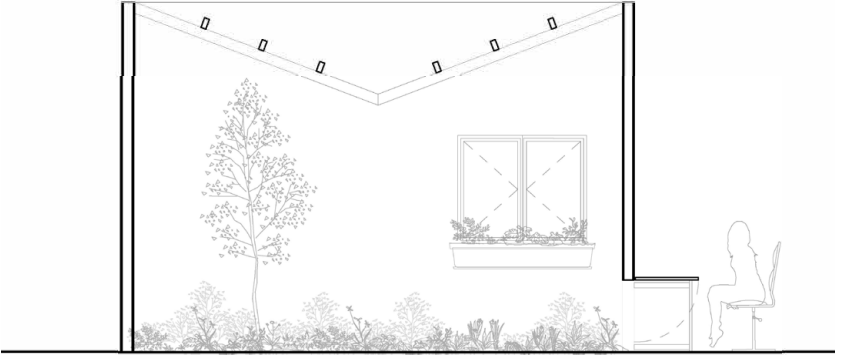
EXTERIOR ELEVATION A



EXTERIOR ELEVATION B



EXTERIOR ELEVATION C



INTERIOR ELEVATION D