

## THE BOX

“You can’t put gates on an open field.”

This Spanish saying reflects the impossibility of imposing limits where none should exist. Inspired by this concept, we have designed our installation to invite visitors to explore and challenge the barriers—both physical and symbolic—that we encounter in our daily lives.

From a distance, we see a red wall that seems to impose limits on our path. However, as you approach it and confront it, not only can you pass through it, but once inside, you can remove it entirely. By crossing that boundary, you begin to see what lies beyond those barriers that often arise in our way: a plane that reflects the sky, reminding us of everything that exists outside the walls that surround us.

With this installation, we invite the public to interact with each element of the work based on their own perception. Some may feel hesitant to approach the wall, while others may run toward it. Some will laugh as they see their reflections multiplied in the mirror, while others may feel fear. Finally, the reflection of the sky may inspire you to dream, or on the contrary, evoke a sense of overwhelming vastness.

There is no right or wrong interpretation—every emotion is valid. Our intention is to encourage reflection on the idea that limits are constructions we place in our own lives.

In the end, true freedom lies in our ability to recognize and transcend those barriers. By confronting our own limits, we discover a broader horizon, filled with possibilities and dreams yet to explore.

The box, with its open planes allowing users to freely enter and exit, reflects the sky on its cover, symbolizing the connection to the infinite. The color of the box evokes the form and vibrant hues of a red maple leaf, contrasting with the natural environment that surrounds it.

For the field, we have selected a variety of wheats that, through their shades, reinforce the aesthetic of the installation.



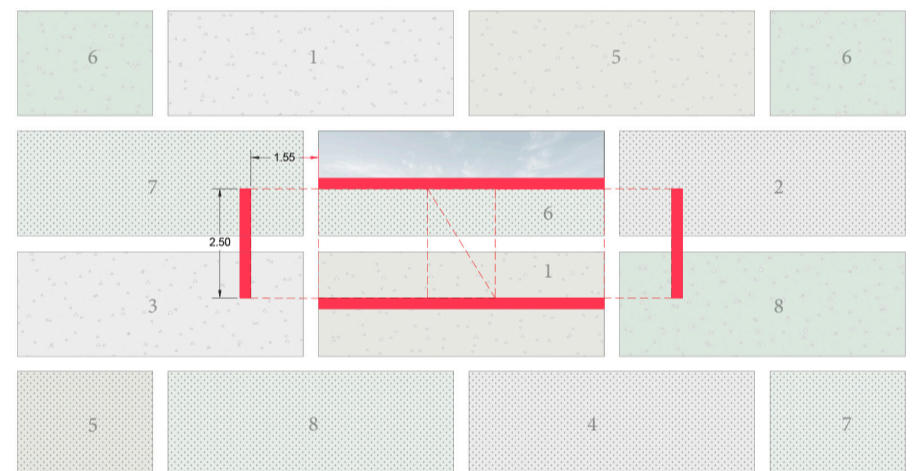
These varieties include:

### Lighter shades:

1. AC Walton
2. AC Andrew
3. CDC Landmark
4. LG Albufera

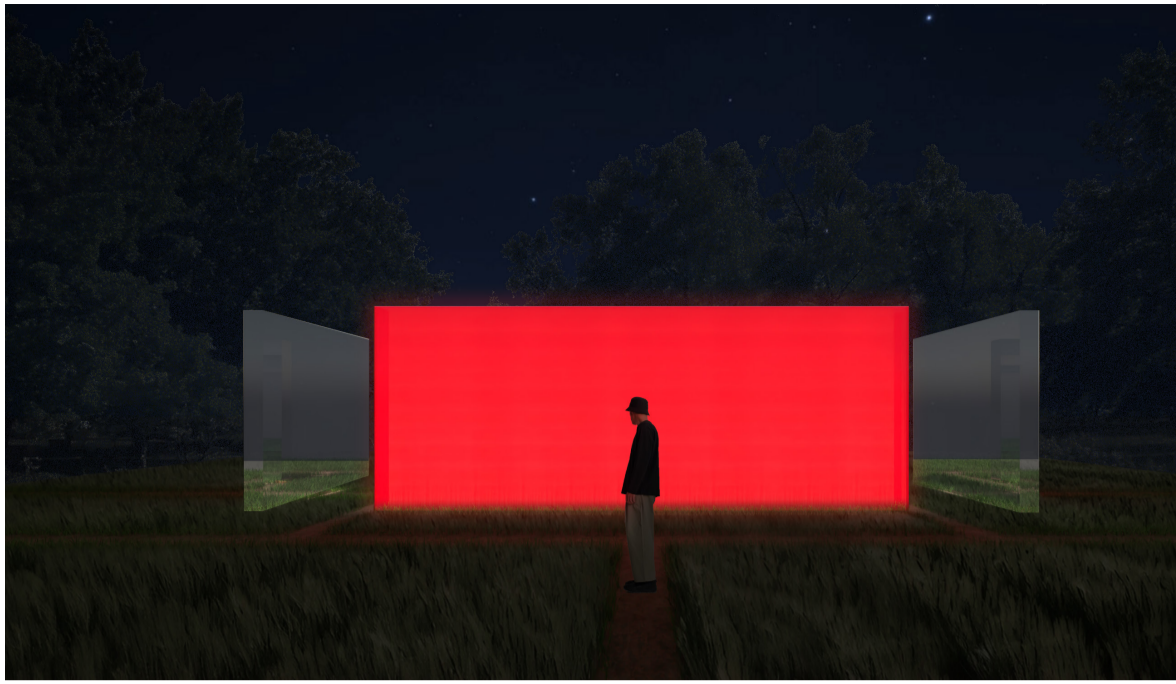
### Darker shades:

5. AAC Concord
6. AC Brio
7. Prosper
8. AAC Scotia



Floorplan 1:150

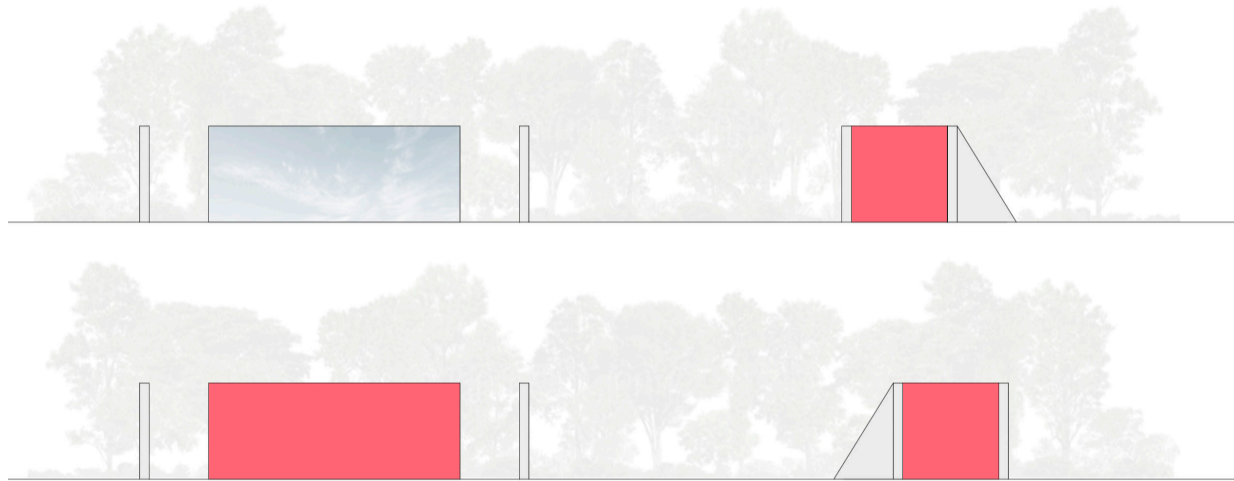
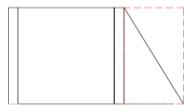
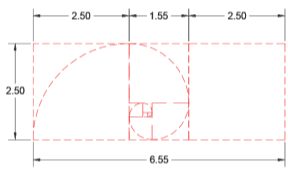




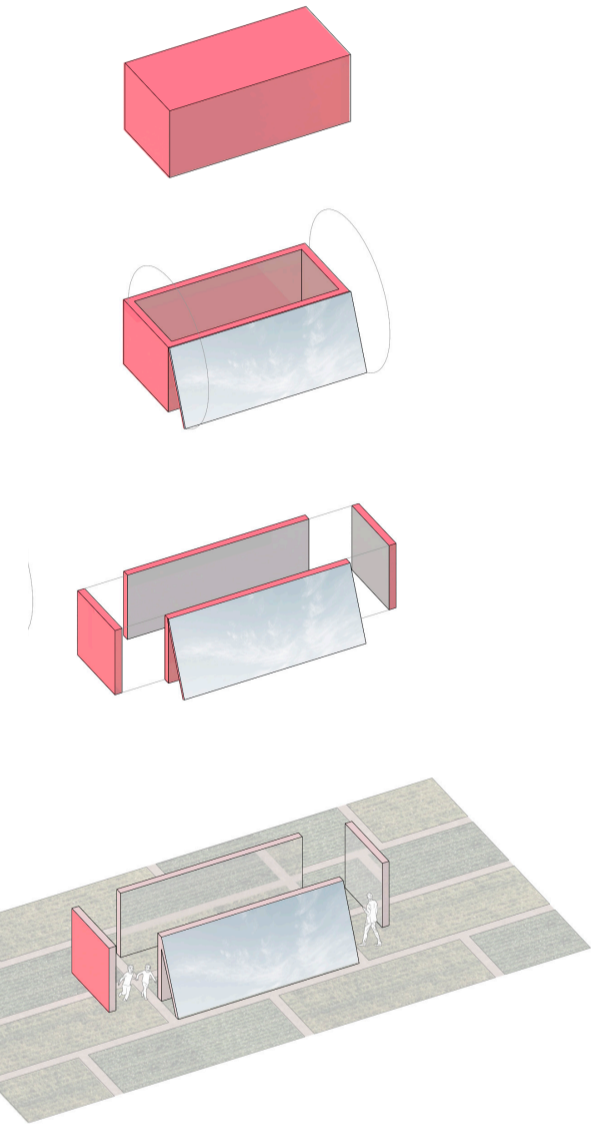
## THE BOX

The box itself, conceived with golden ratio proportions, unfolds its structure in a deliberate play of balance and symmetry. The orange box, with its mirrors and carefully calculated separations, creates an interplay of reflections and light. The inclined mirror on the open cover and the two square lids, separated by another golden ratio distance, reinforce the concept of limits and boundaries. Each element respects this harmonious proportion, inviting visitors to question how we measure and define borders in both physical and abstract forms.

By using such precise geometry, the installation emphasizes the fine line between restriction and openness, structure and freedom, mirroring the boundaries we encounter in life—only to reveal that they, too, can be shifted or dissolved.



Elevations 1:150



Axonometry

