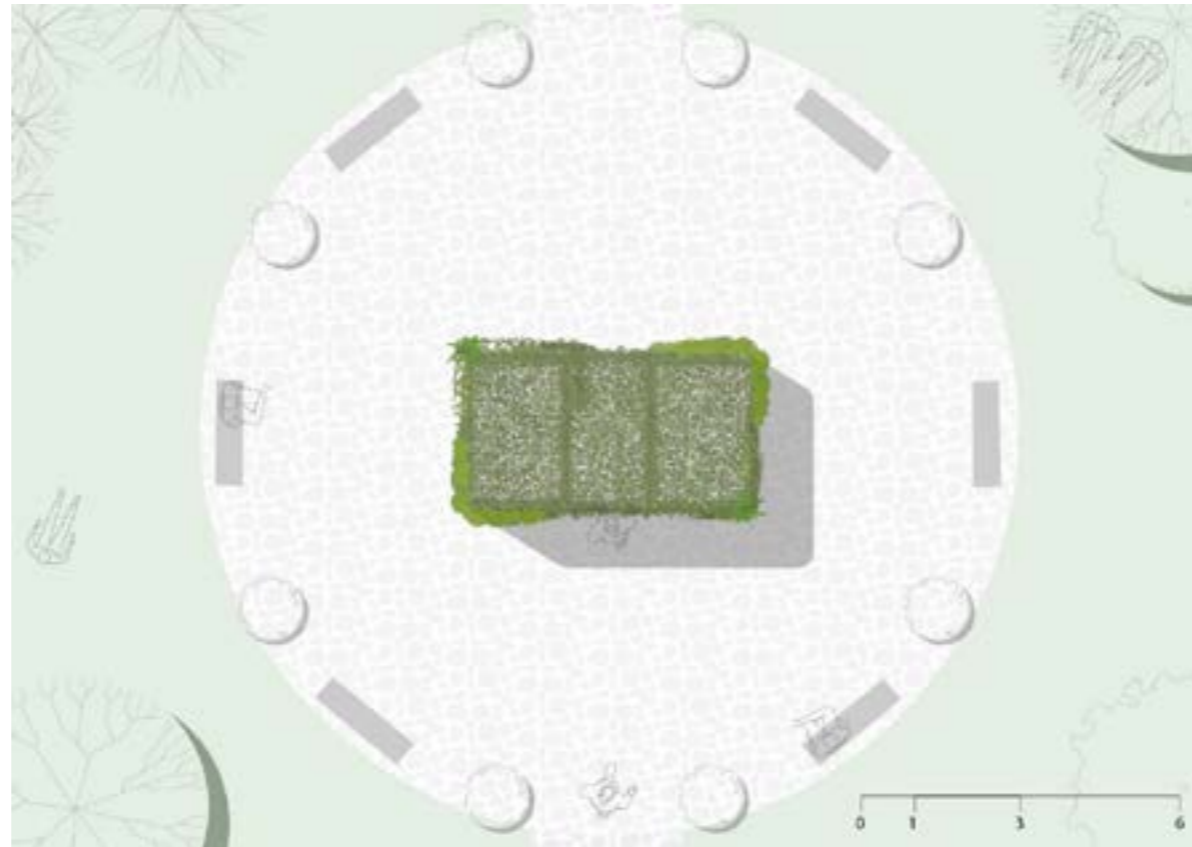


## Arc de Jardin



Arc de Jardin is a living landmark: a place of welcoming, interaction and refuge. This sculptural piece creatively mixes living plants with the Physical monuments. The installation creates a welcome point for ecology - a figurative gateway where we can interact, connect and experience plants and the ecosystem created. The physical form and provision references iconic French monument. and is contrasted with green and life that create a warm and welcoming space. The arch itself acts as a frame for a rethink on humans idea of monument - a space of new life: natural environments designed to encourage visitors to take a moment and interact intellectually and physically. Ultimately, the piece is an exploration Garden art and built environment that creates playful relation between these ideas.

### List of Suggested plants

Rabbit's Foot Fern, Bird's Nest Fern, Pothos, Golden Pothos and Devil's Ivy, Petunias, Canadian vervain. Glandularia, rosemary, Greek oregano, Chives

