

2023

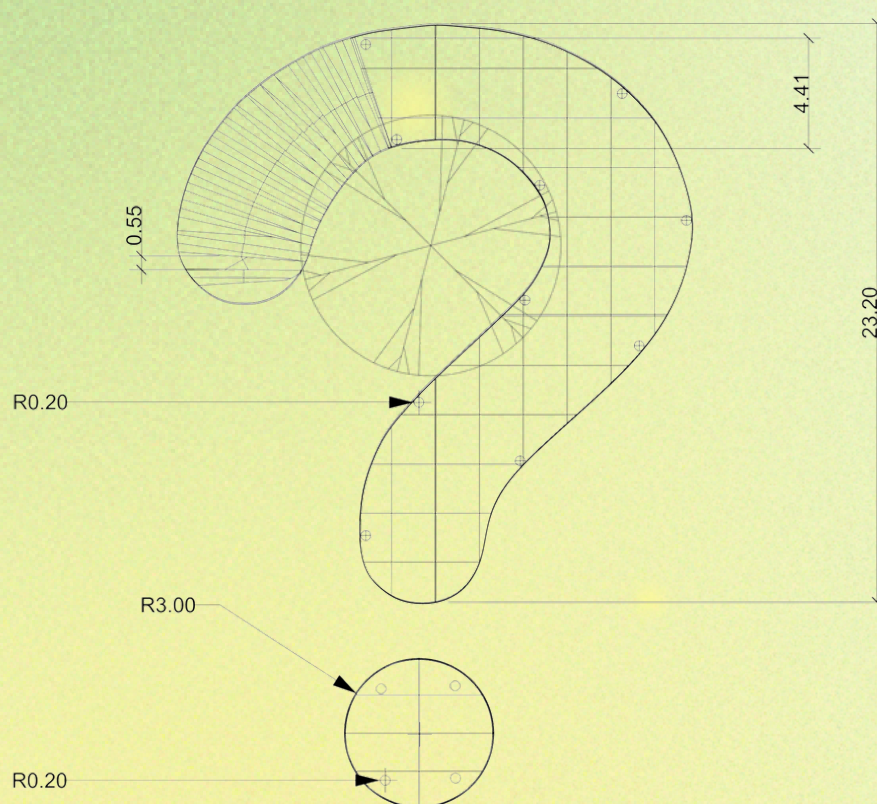
FIND THE ANSWER

design philosophy

The building takes the question mark as the main body of the building, and expresses it in the form of gallery and pavilion. We use the beginning of the question mark as the staircase, which represents people coming with doubts. The next part is the point of the question mark, which represents the full stop and expresses the termination and end of the doubts.

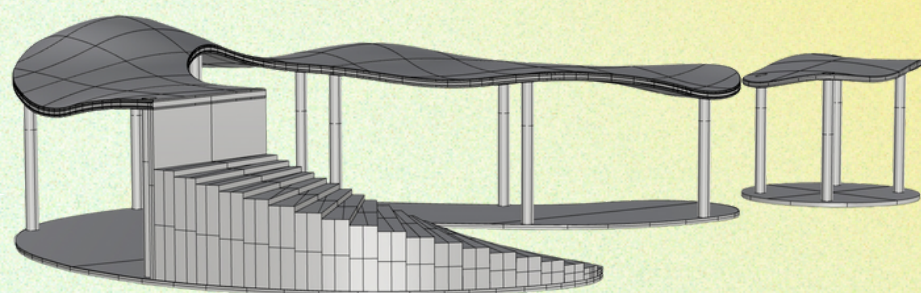
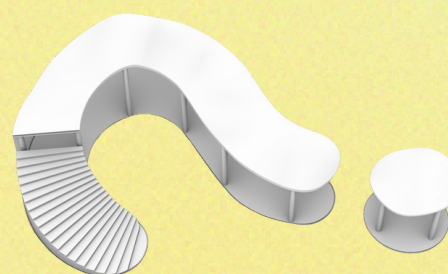
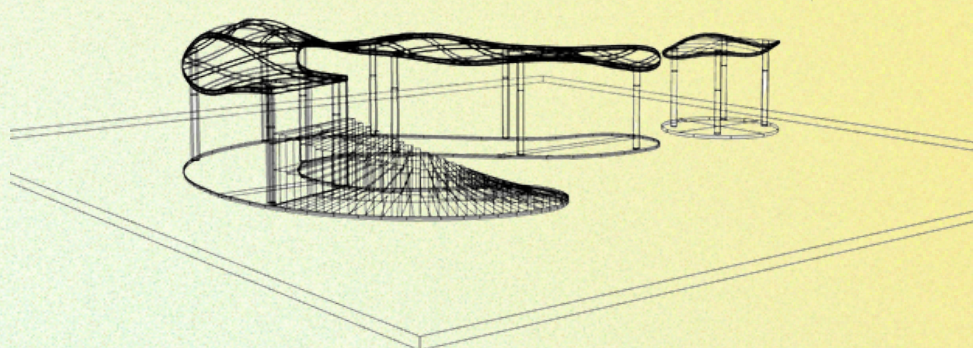
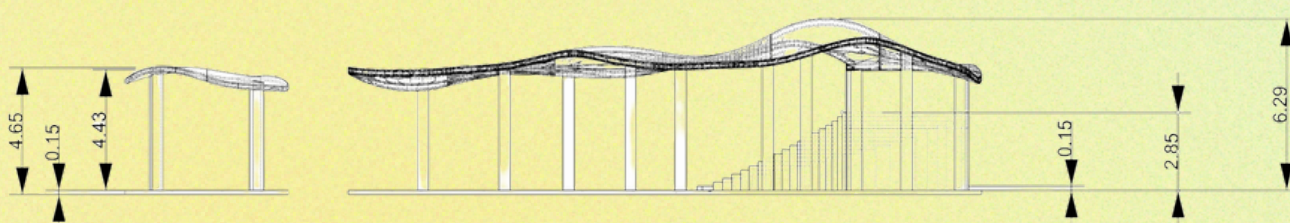
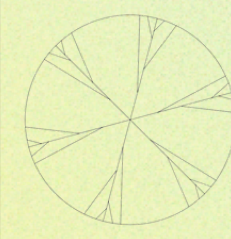


The upper part of the building is a gallery, the lower part is a pavilion, both parts of the building are white as the main body, made of steel structure. The interior is open space, which can provide the widest view for the people who use it. The structure of the building starts from the ground, with a staircase and a piece of glass at the end of the staircase, which allows people to rest and visit the distant scenery. In other words, the staircase on the roof is used as a service area in the open space. After the completion of the staircase, in order to have a sloping roof that is suitable for the climate and does not accumulate water, the roof of the two parts of the building is presented with a curved slope.



plant furnishing

Red maple



The facade of the veranda is hollowed out, which, in addition to providing transparency and perspective, helps to maximize the use of natural light and reduce the use of artificial lighting, which can easily penetrate all parts of the building due to its shallow depth.