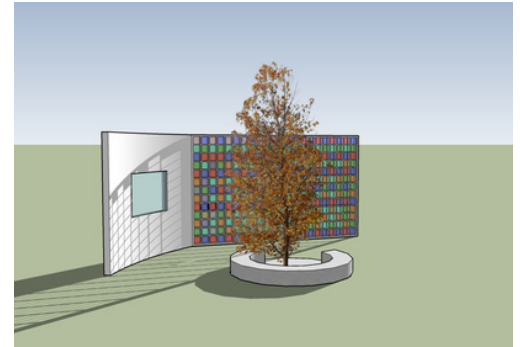
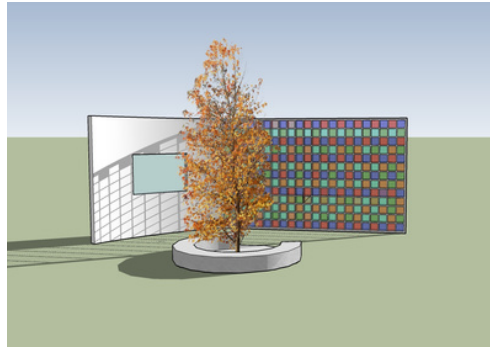


WE ARE ALL IN THE GUTTER, BUT SOME OF US ARE LOOKING AT THE STARS.

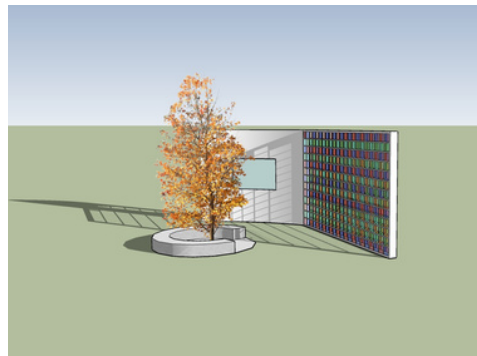
身在井隅，心向璀璨

DESIGNER: 沈寻、王竹皓

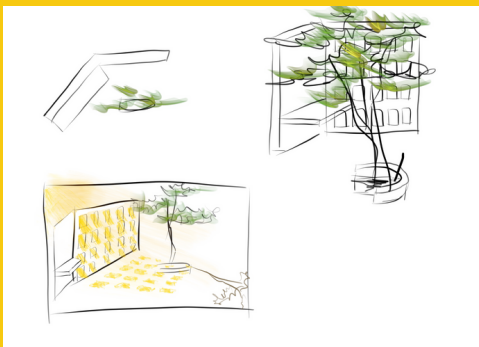
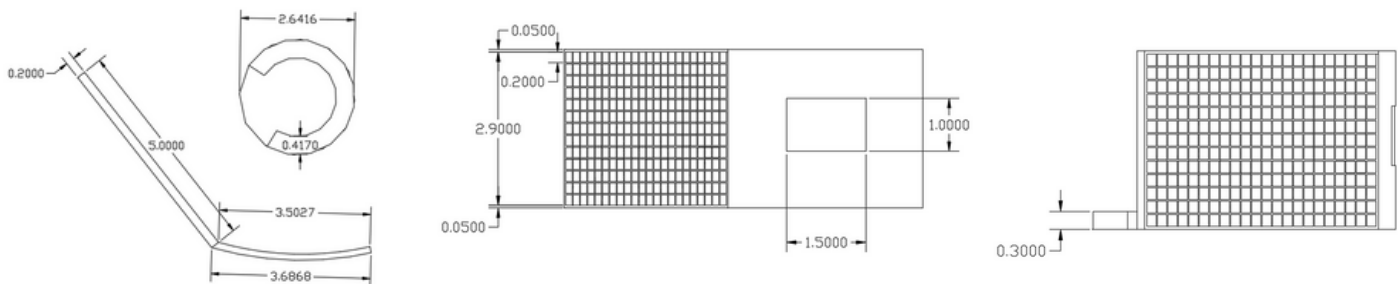
The internal tree represents vitality, and the semi enclosed structure also carries the meaning that humans and nature cannot be separated.



Under the epidemic, people are forced to stay at home and cannot go out, and even basking in the sun can only be done in a closed environment. Therefore, we initially designed a glass grid like transparent wall based on the sunlight under the high wall, which can only see the outside world through small squares. Next to the transparent wall, there is also a wall that is completely isolated from the outside world, representing that each of us is in a corner of the world, connected but also separated from the outside world. This design provides a place for introverted individuals to escape the hustle and bustle of the outside world and gain energy, as well as a place for extroverted individuals to have fresh experiences.



This design draws on the experience of the epidemic and calls for everyone to step into nature, feel it, and get close to it.



The meaning is that only a part can be seen through a surface, and even in the free space of the outside world, only a corner or surface of the obstructed space can be seen, making it impossible to fully empathize with oneself.