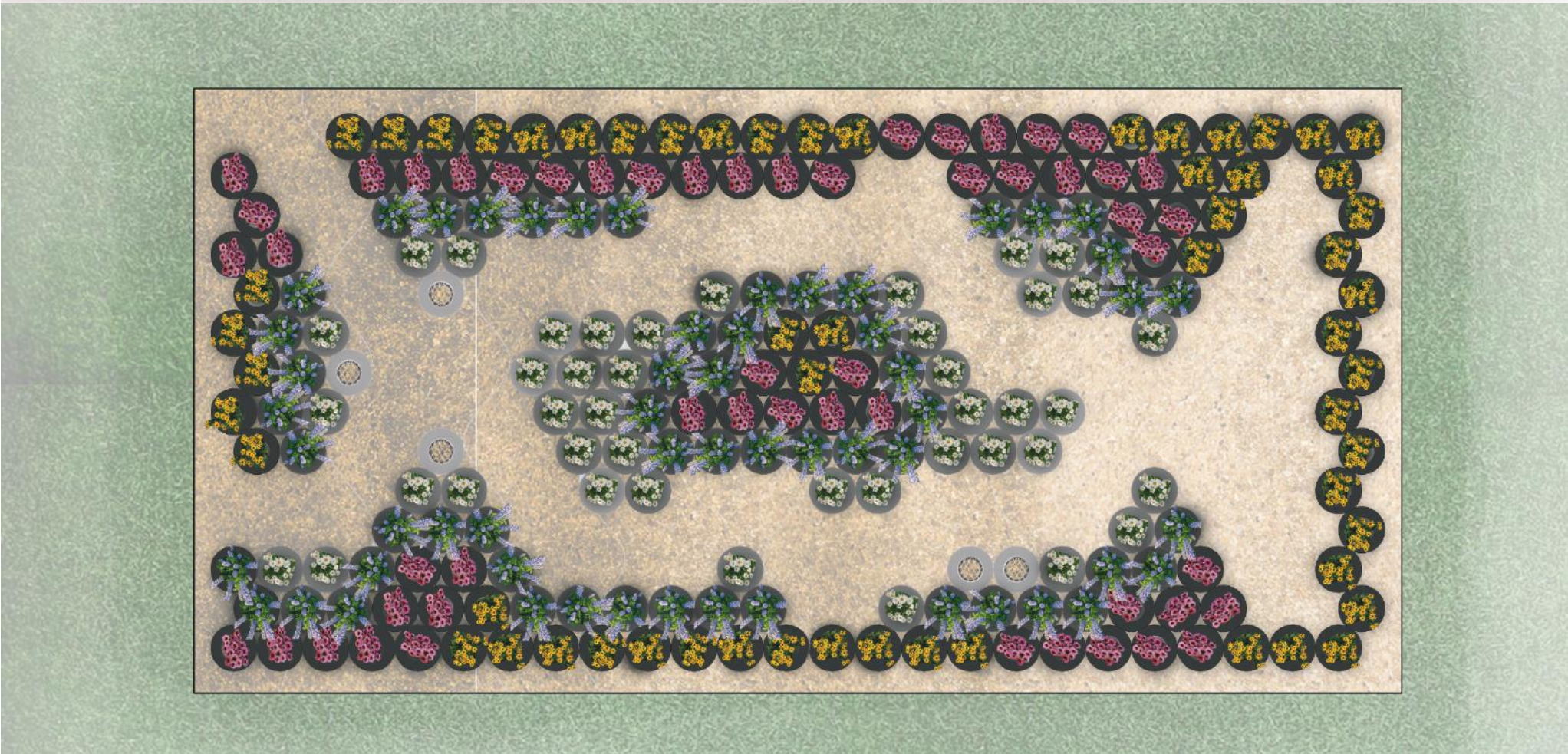
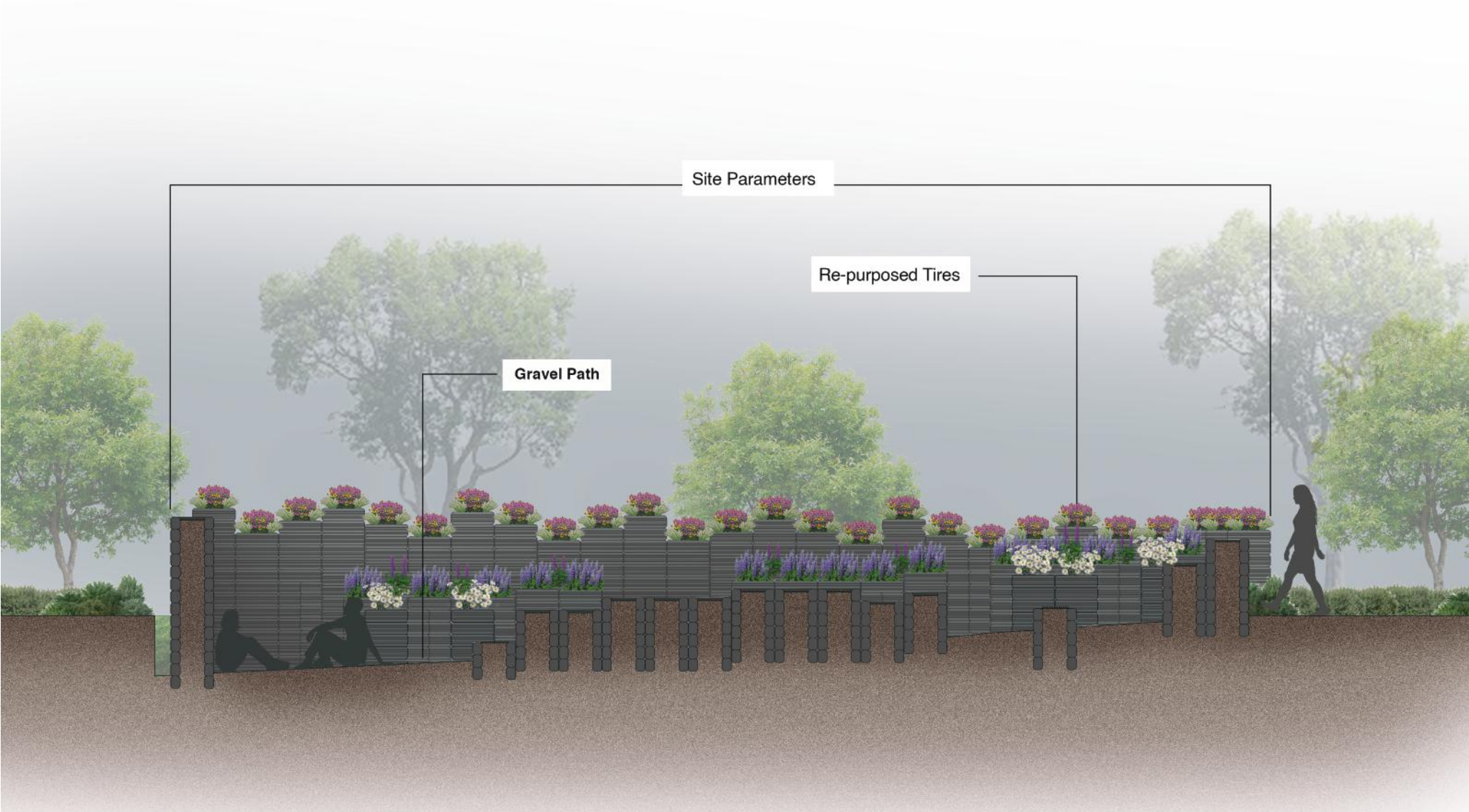
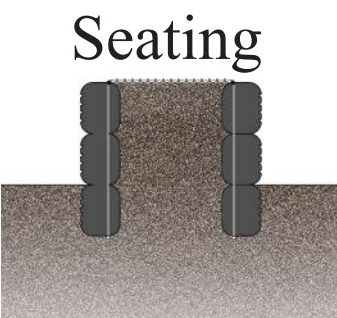
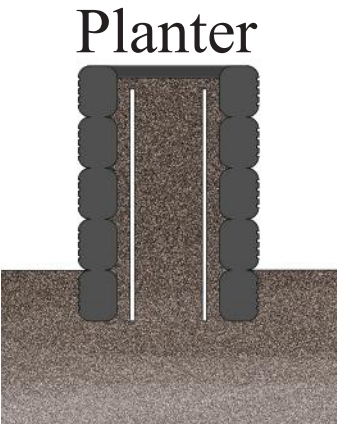
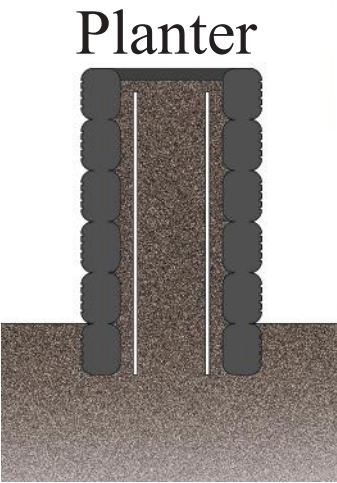
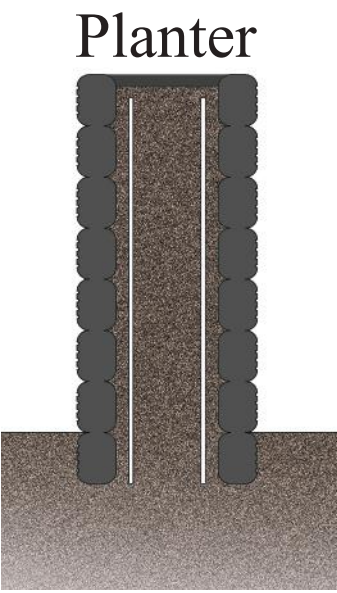
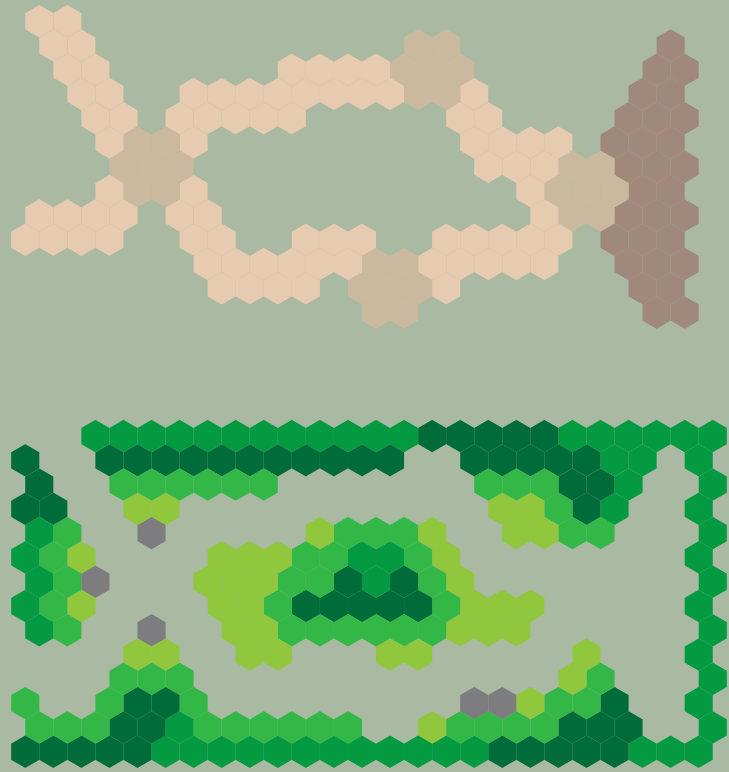


Wandering Possibilities

Inspired by the 2024 theme, The Ecology of Possibility, our team created a garden with endless possibilities. In the beginning, we followed a grid, which eventually involved into the enclosure and pathways of the garden. Multiple entrances and paths throughout the garden allow for each visitor to have a different experience. With the built-up walls, our idea for our project was to feel concealed within the site: seeing the exterior borders and having to wander into the paths to see behind the walls.

Materials used were reusable tires, rebar, rope, gravel, and dirt. Our goal was to stick with as many reusable materials as possible; this was done with the exception of the rope for seating. The use of native plants to the area will be used to depict different levels of the garden. There is a slight topography change across the site. The dirt dug up creating this slope will be used as the infill of the tires. Each of these aspects pull together our project, creating a Wandering Garden that we hope presents a calming and peaceful atmosphere.



Materials & Expense

- 

Used Tires = \$30 - \$55
(ex: 215/55/17)
- 

Rebar #3 = \$5 - \$9
(20 ft) = \$5-\$9
- 

5/16 Rope = \$0.43 per ft
- 

Dirt = \$0
(Provided)
- 

Gravel = \$1-\$3 per sq ft
- 

Potting Soil Mix = \$6 per 8 qts



Interiors



Ideal Local Plants

- 

Purple Lupines
- 

White Oxeye Daisies
- 

Pink Coneflowers
- 

Yellow Coneflowers