

## SUGGESTED PLANTS

**Apocynaceae** - *Asclepias curassavica*

**Rhamnaceae** - *Ceanothus arboreus*

- *Ceanothus 'Autumnal Blue'*

- *Ceanothus thyrsiflorus* var. *repens*

**Nyctaginaceae** - *Bougainvillea 'Mini Thai'*

**Onagraceae** - *Gaura lindheimeri* 'Passionate Pink'

- *Gaura lindheimeri* 'White'

**Solanaceae** - *Lochroma cyaneum*

**Poaceae** - *Panicum virgatum* 'Squaw'

- *Schizachyrium scoparium*

**Plantaginaceae** - *Penstemon* 'George Home'

**Hydrangeaceae** - *Philadelphus x virginalis*

**Pontederiaceae** - *Pontederia cordata*

**Verbenaceae** - *Verbena x hybrida*

Layout plan 1:50



## Milieu Écotones

The delineation between constructed spaces and the natural world often manifests as **compartmentalized zones**. In the proposed layout, an emulation of the **ecotone system** is afforded: a representation of transitional areas where **diverse ecosystems intersect and overlap**.

The utilization of ecotones varies among species, contingent upon their ecological adaptations.

Occasionally, ecotones emerge due to ecosystem disturbances such as prairie burns, floods, or tree crashes on a ridge. These events prompt abrupt changes in light, fertility, and moisture conditions, resulting in a **reshuffling of species**, some disappearing while others seize the opportunity to colonize.

Conversely, **artificial ecotones pose challenges**, needing more gradual transition characteristic of natural

environments, instead marked by distinct and abrupt demarcation lines. The garden design adopts an **ecotonal paradigm**, mediating between natural and artificial realms: a **transition zone with ecological potential**.

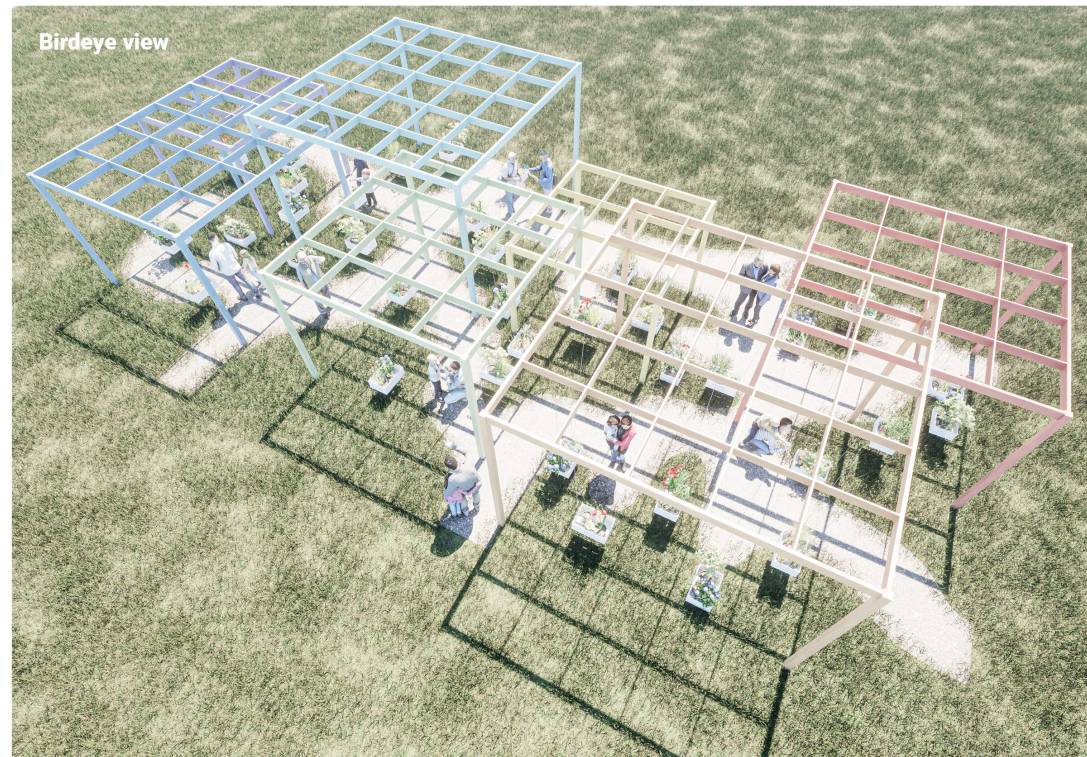
Pavilion construction involves **Spruce wood planks** stained with diverse bio paints. Recycled horticultural wooden boxes and recycled food tin cans constitute the setup, and **plant species, all native to America or North America**, unite the composition. Visitors during the experience have the opportunity to **act directly on the plant elements** of the composition moving the tin cans from a box to another, giving the garden a constantly different appearance: this interaction is meant to symbolize the **intrinsic dynamics of natural ecotones**, which, thanks to their mutability, always give **new possibilities to ecology**.



Cross section 1:50



Birdeye view



Longitudinal section 1:50

