

# Veggie Bank

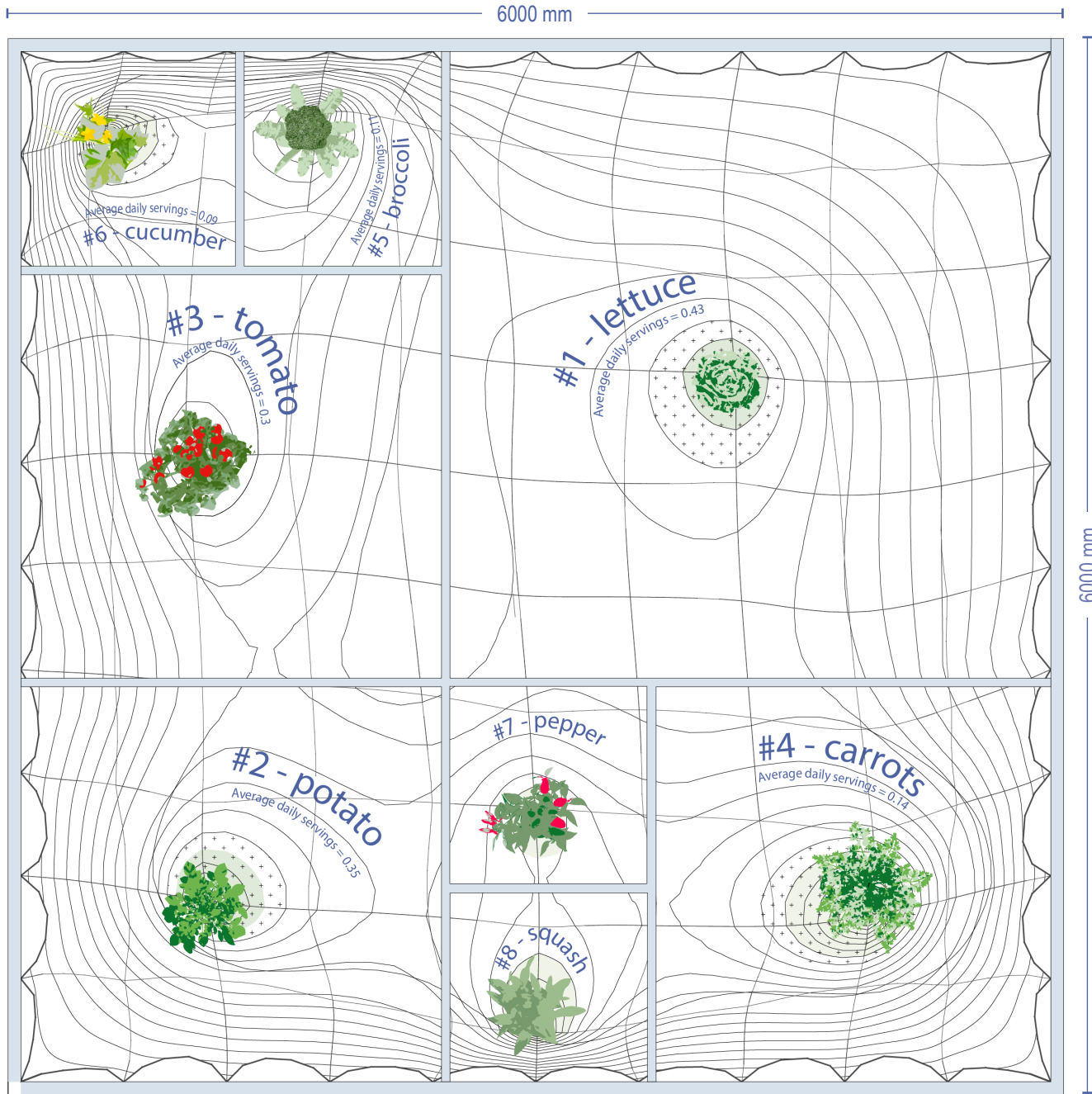
Inflation, regional conflicts, and post-pandemic recovery weave a complex societal tapestry. “Veggie Bank” explores their impact on daily life, revealing how economic forces shape our existence. This installation, through nuanced visuals and emotions, illuminates the subtle ways inflation influences the intricacies of domestic and communal dining experiences.

Rooted in the rich history of household vegetable gardens responding to global events like WWII and the Great Depression, the Veggie Bank delves into today’s narrative of inflation. Utilizing Consumer Index Data from Statistics Canada, the installation employs a translucent surface to elevate eight commonly consumed household vegetables, each suspended at a height corresponding to its retail price increase over the past five years. This dynamic portrayal invite

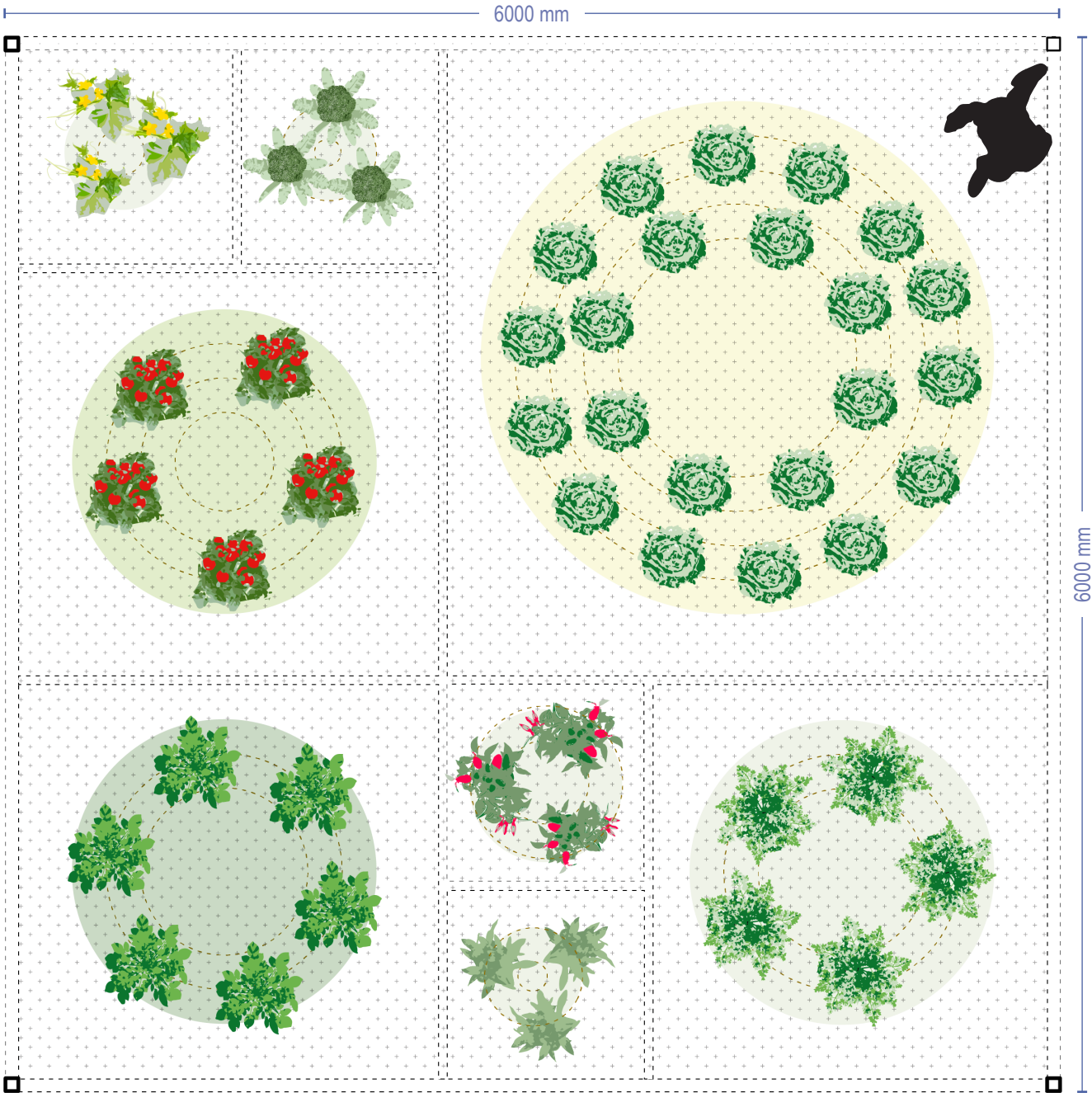
visitors to engage with the pavilion, initially recognizing familiar vegetables from their daily meals, only to confront the stark reality of inflation pushing these everyday items to new heights.

The spatial environment created by the Veggie Bank aims to immerse visitors in a blend of data and emotion through interactive design. By compelling users to visually and physically experience the impact of inflation on their dinner plates, the installation sparks contemplation and connection, bridging the gap between the numerical representation of economic forces and the visceral understanding of their effects on our everyday lives.

**Selected plants and vegetables:** Lettuce, Carrots, Potato, Tomato, Pepper, Squash, Cucumber And Broccoli



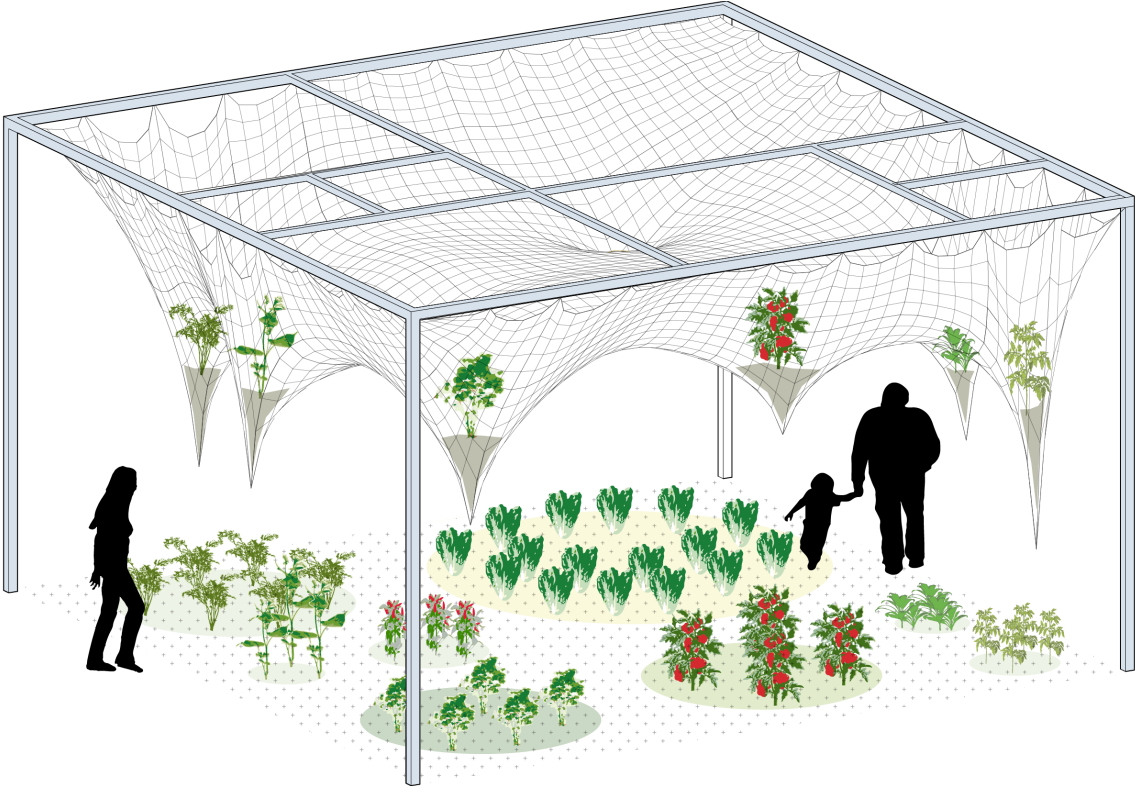
Reflective Ceiling Plan With Plants List



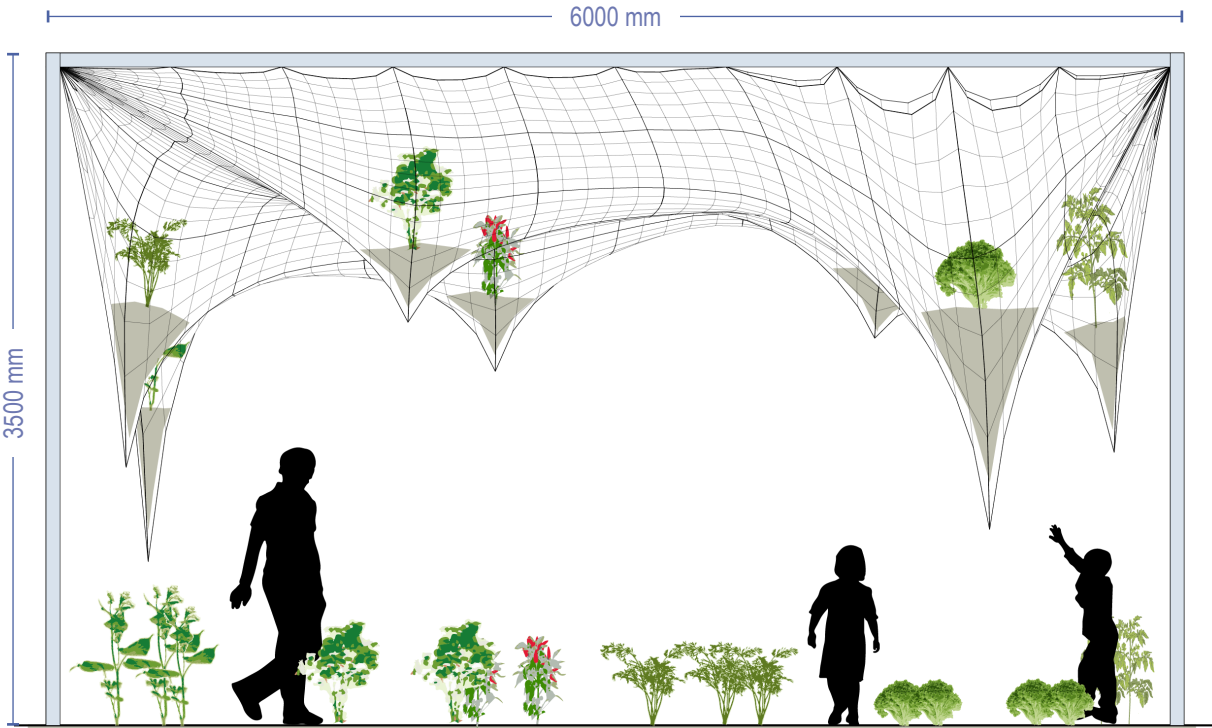
Plan



# Veggie Bank



Axon



Elevation