

~ The secret garden ~

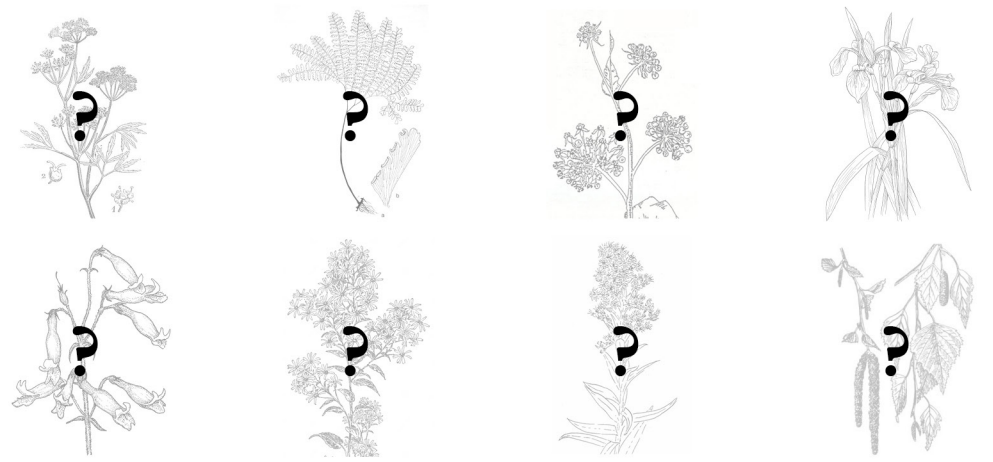
What would a garden be like if humans did not actively take care of it? **A secret garden!**

The garden is a place where the natural environment is dimensioned and designed to follow human logic, allowing on the one hand a contact between humans and non-humans, and on the other hand subjecting the latter to the will of the former.

The “secret garden” thus reverses this relationship, giving a dimension of its own to the natural environment that can develop according to its own needs, timing and aesthetics. A new **ecology of possibility** where humans are spectators of natural processes.

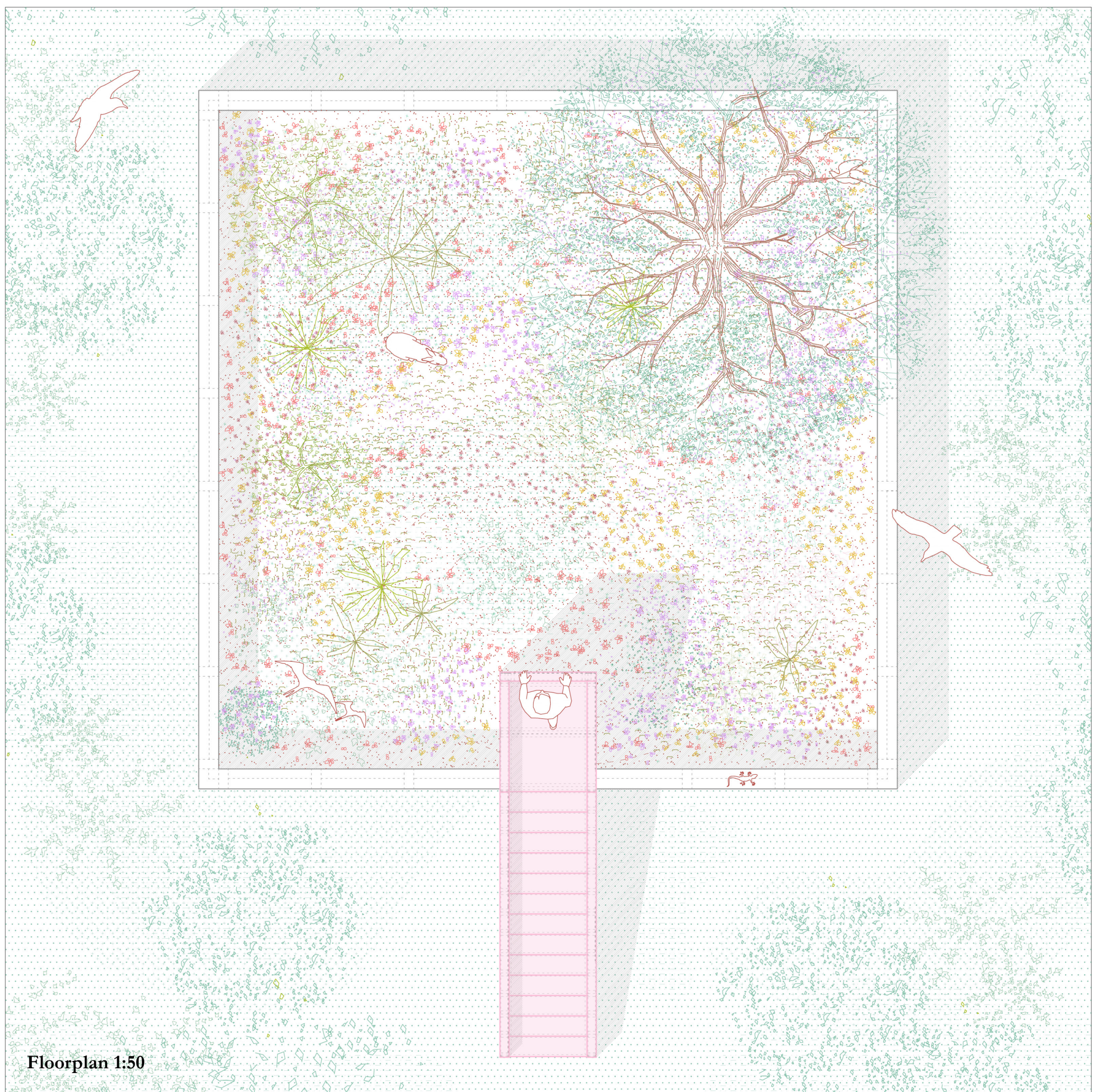
The “secret garden” plays with separation and distance, which are necessary to allow a spontaneous development of nature (Clément, 2004). A wall made with recycled bricks protects this small non-human garden from human influence, which can only limit itself to observing from the top of a ladder.

A new (or perhaps ancient) form of coexistence is thus experienced where human habitation does not stifle other forms of life, making room for an independent development, while at the same time creating meeting points (Latour, 2018).



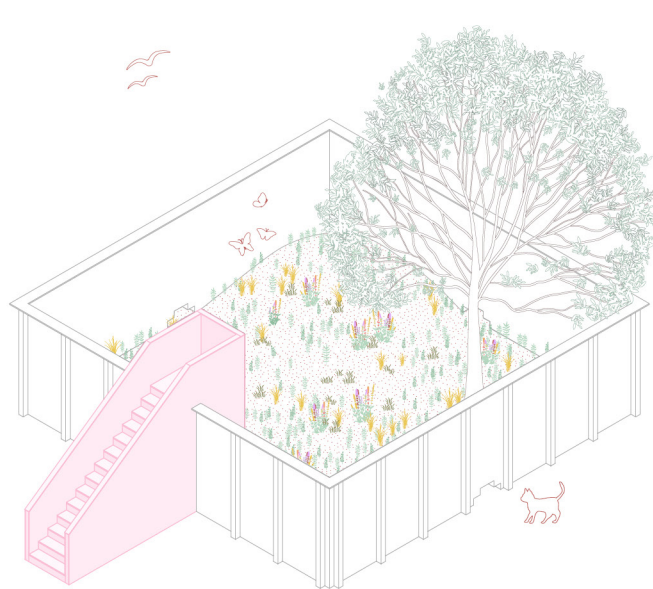
The ecology of possibility:

The plant species are still unknown as “the secret garden” will be an experimental spontaneous garden. The species that will grow will be documented and cataloged during the stay and before dismantling the installation

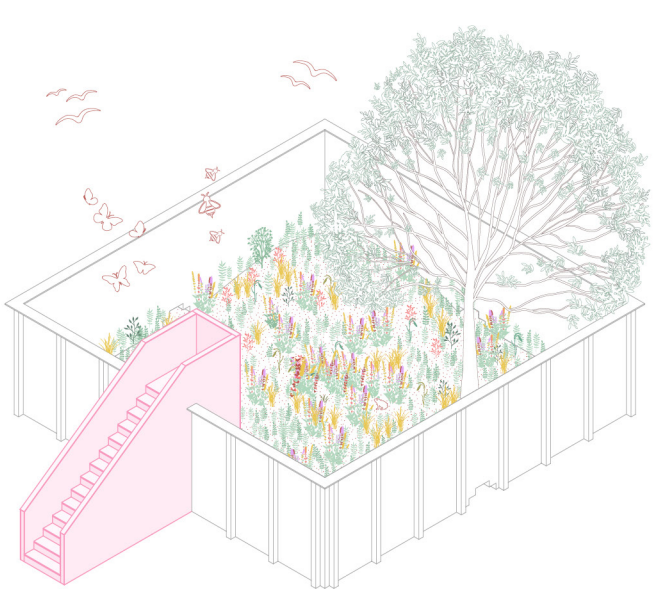




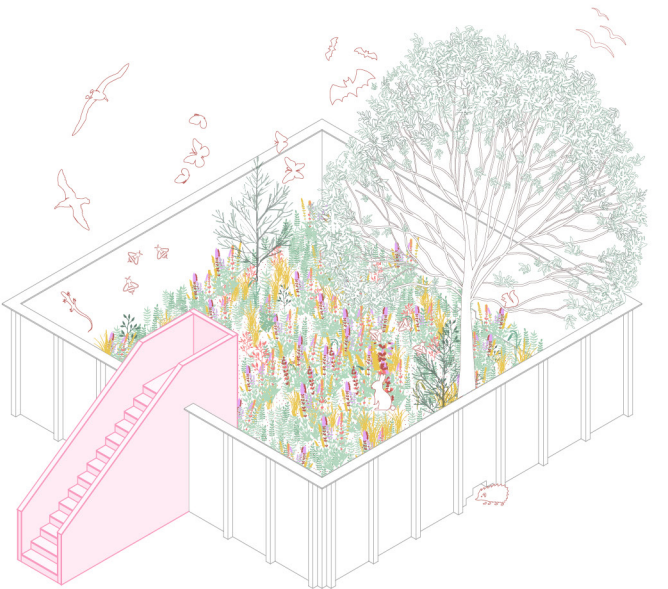
Exterior view



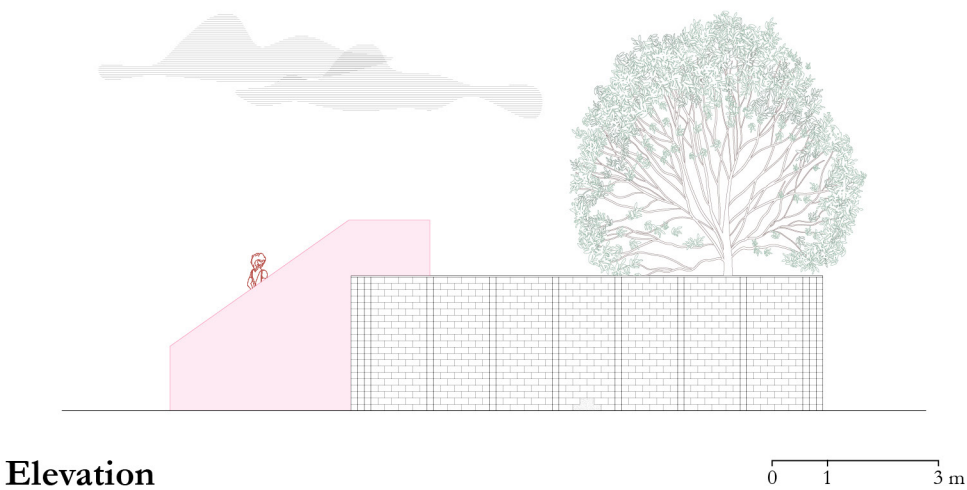
Temporality - June 2024



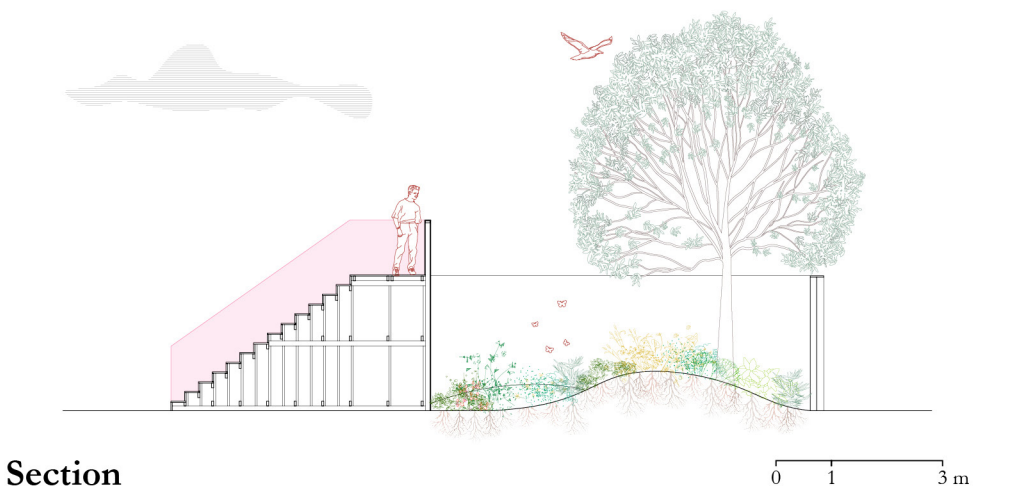
Temporality - October 2024



Temporality - June 2025



Elevation



Section



Front view



Interior view