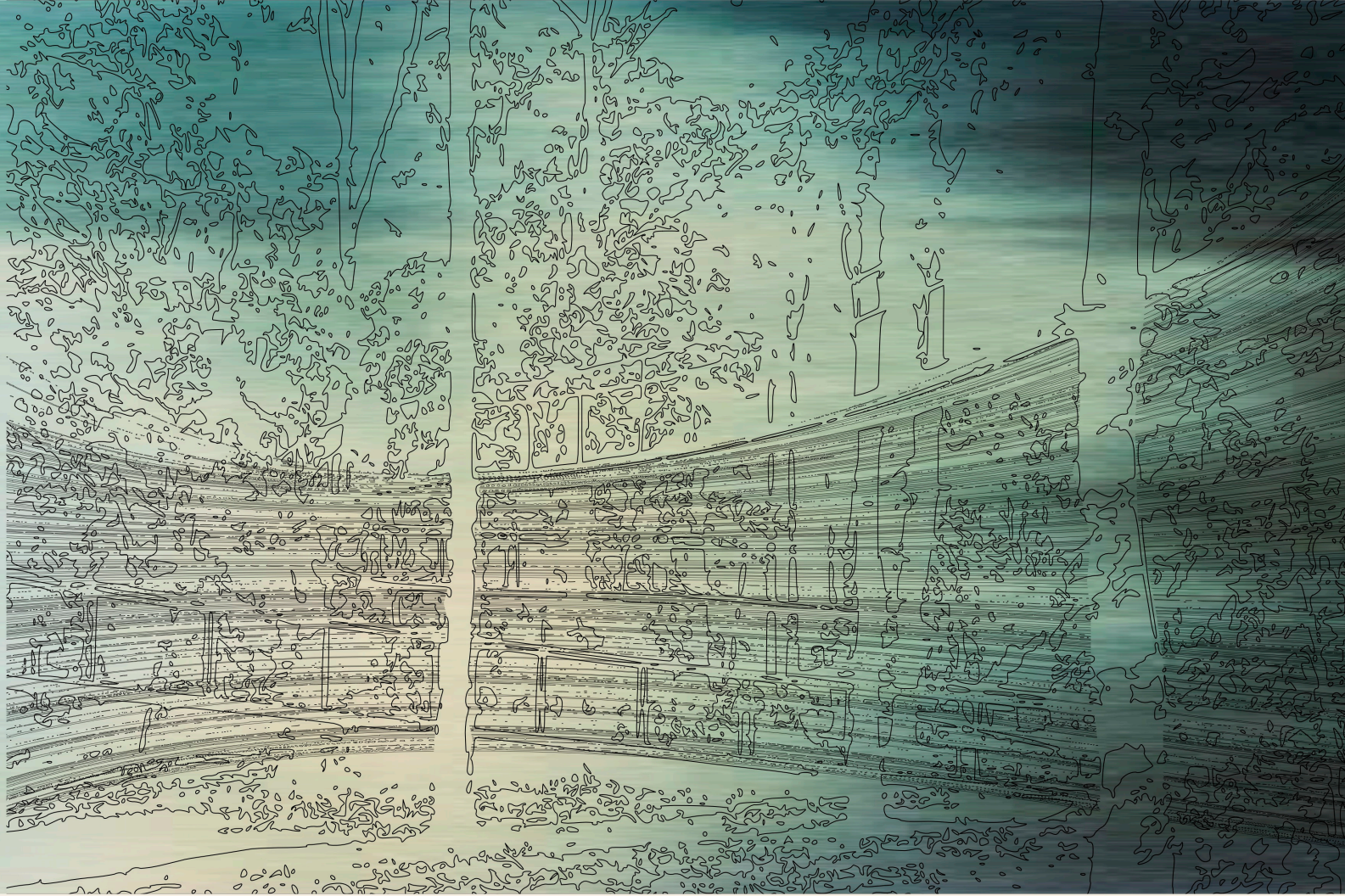


STEEL LIFE is a site-specific installation stimulating an ecological awareness of connectivity in the participants. This stimulation is induced by exposing the visitor to a sensuous and poetic encounter between the living forms of the existing natural world - trees - and the vibrating materials of industrial technology - steel. Both are equal, important and unimportant at the same time.

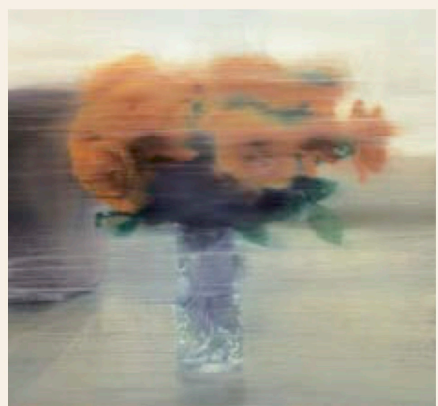
Endless steel cables are out there, stretching, floating, moving, crossing, bending, expanding and contracting. The existing natural elements stay in the same place, show resistance, open up paths, point out directions, set distances, and allow anchoring. These distinct entities partner in a visual scenario presenting new possibilities for open dialogues, relational dynamics, and sense of connectedness.

As a result of the two-sidedness of the encounter, the visitor moves beyond spectatorship to participation. One is here able to imagine a potential new world where nature and culture pleasantly coexist. The subtle changing perspectives along the journey of a walk triggers self-reflection on the possibility of the ecological connectivity of everything. This is pivotal to a sustainable transition.

STEEL LIFE invites each participant to join in supporting the transition towards a more sustainable future.



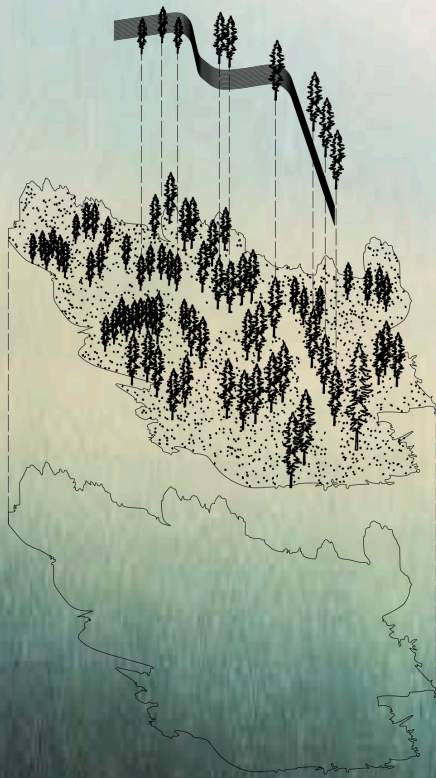
↓ plan 1:100 ↑ perspective drawing



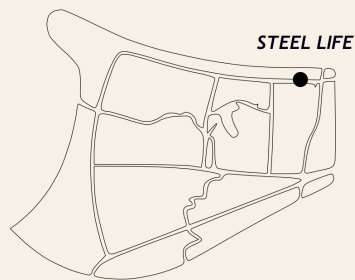
reference image: *Roses* by Gerhard Richter



STEEL LIFE



← axonometric diagram ↓ elevation 1:100 ↑ perspective drawing



site specifics
 preferably location: west-east axis
 list existing plants: mature conifers and poplars
 list new materials: recycled steel cables
 dimensions: aprox. 20-25m length by 2m height

