

The Reflective Tree

In the age of climate change extreme natural phenomena push us to think about adaptation topics. Plants are sedentary species that must survive in the place where they have taken roots and adapt to the environment.

“The Reflective Tree” is a garden project that wants to make the visitor reflect on climate change consequences.

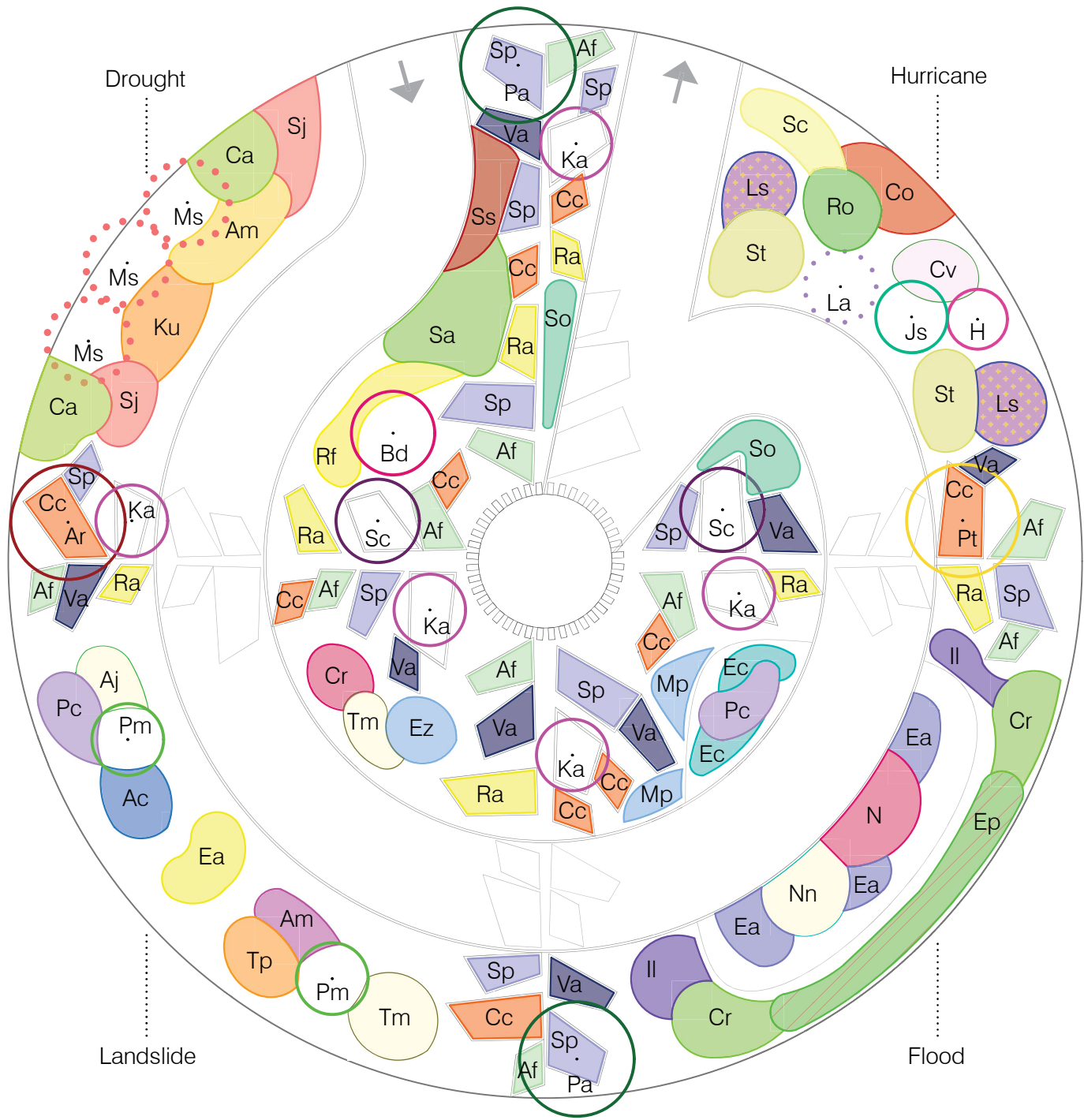
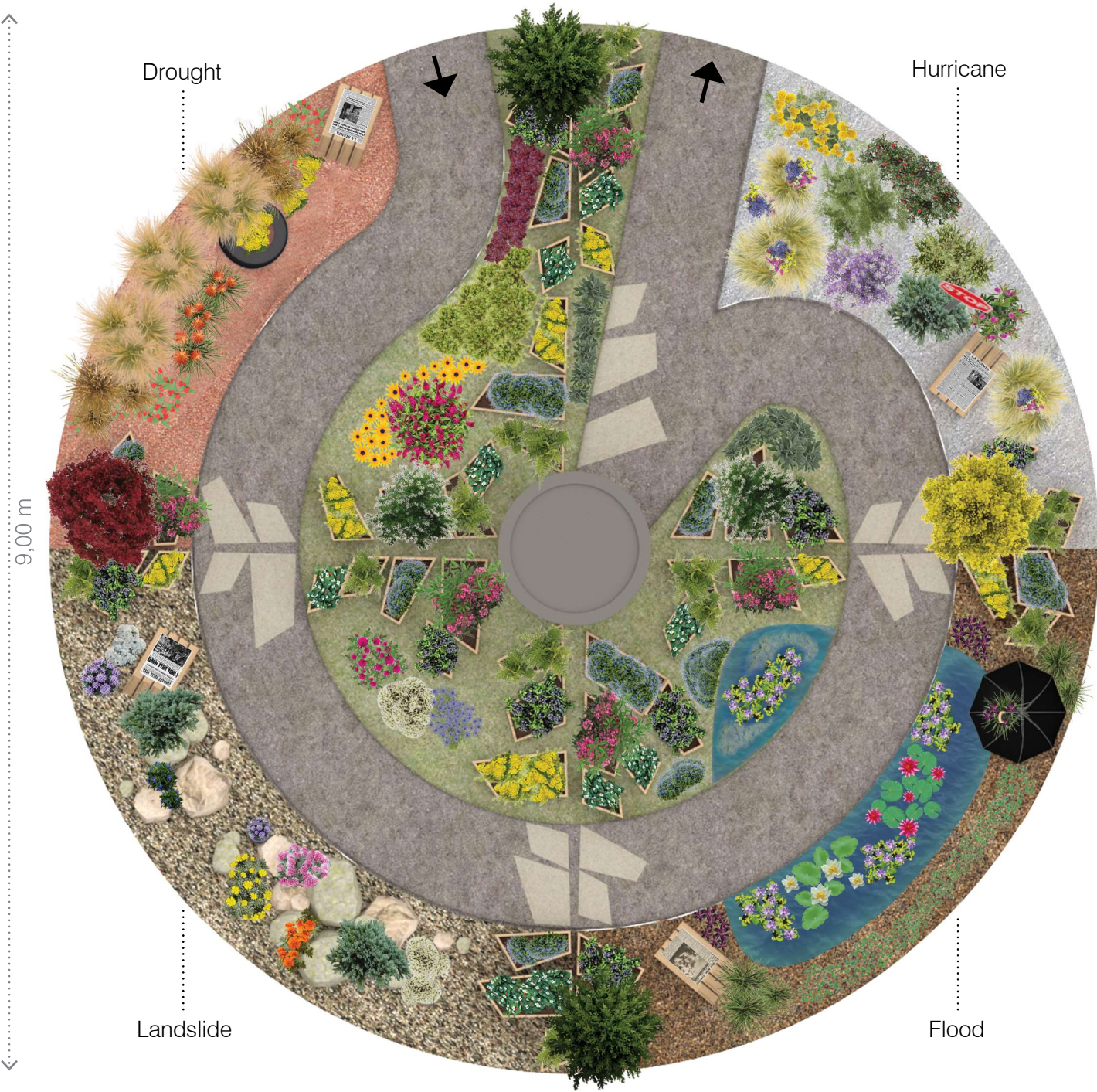
A route crosses four scenarios following catastrophes: Drought, Landslide, Flood and Hurricane. The segments are created by four rays symbolizing the tree’s roots, along which local plant species are planted. In the segments it is shown how nature adapts to these changes, with plant species from arid areas, water environments, windy areas and rocky terrains.

At the end of the route, after seeing the climate disasters and the adaptation of plants, the visitor enters the Reflective Tree and is led to look upwards and see themselves in a mirror. They find the answer, the provocation. Who am I in all of this? What can I do? Will we be able to adapt?

The Reflective Tree is a way to look beyond ourselves to look at ourselves.

Legend of plants

Native vegetation	Drought	Landslide	Flood	Hurricane
<div>Ar</div> Acer rubrum	<div>Am</div> Achillea millefolium	<div>Ac</div> Anchusa caespitosa	<div>Cr</div> Carex riparia	<div>Cv</div> Calluna vulgaris
<div>Af</div> Athyrium filix-femina	<div>Bd</div> Buddleja davidii "Royal red"	<div>Am</div> Anthyllis montana	<div>Ea</div> Eichhornia azurea	<div>Ch</div> Cotoneaster horizontalis
<div>Cc</div> Cornus canadensis	<div>Ca</div> Calamagrostis x acutiflora "Karl Foerster"	<div>Aj</div> Armeria juniperifolia "Alba"	<div>Ec</div> Elodea canadensis	<div>H</div> Hebe
<div>Ka</div> Kalmia angustifolia	<div>Ku</div> Kniphofia uvaria	<div>Cr</div> Cirsium rivulare "Atropurpureum"	<div>Ep</div> Equisetum palustre	<div>Js</div> Juniperus squamata "Blue Star"
<div>Pa</div> Picea abies	<div>Ms</div> Miscanthus sinensis "Fleming"	<div>Ez</div> Eryngium yabellii "Big Blue"	<div>Il</div> Iris louisiana "Black Gamecock"	<div>La</div> Lavandula angustifolia
<div>Pt</div> Populus tremuloides	<div>Rf</div> Rudbeckia fulgida	<div>Ea</div> Euryops acraeus	<div>Mp</div> Myosotis palustris	<div>Ls</div> Limonium sinuatum
<div>Ra</div> Ranunculus acris	<div>Sj</div> Salvia x jamensis "Flammen"	<div>Pc</div> Physoplexis comosa	<div>Nn</div> Nelumbo nucifera "Shirokumshi"	<div>Ro</div> Rosmarinus officinalis "Prostratus"
<div>Sc</div> Sambucus canadensis	<div>Sa</div> Sedum album	<div>Pm</div> Picea mariana "Nana"	<div>Nb</div> Nymphaea "Burgundy Princess"	<div>Sc</div> Santolina chamaecyparissus
<div>Sp</div> Symphyotrichum pumiceum	<div>Ss</div> Sedum spurium voodoo	<div>Tp</div> Tagetes patula "Arancio"	<div>Pc</div> Pontederia cordata	<div>So</div> Stachys olympica
<div>Va</div> Vaccinium angustifolium		<div>Tm</div> Thymus membranaceus		<div>St</div> Stipa tenuissima



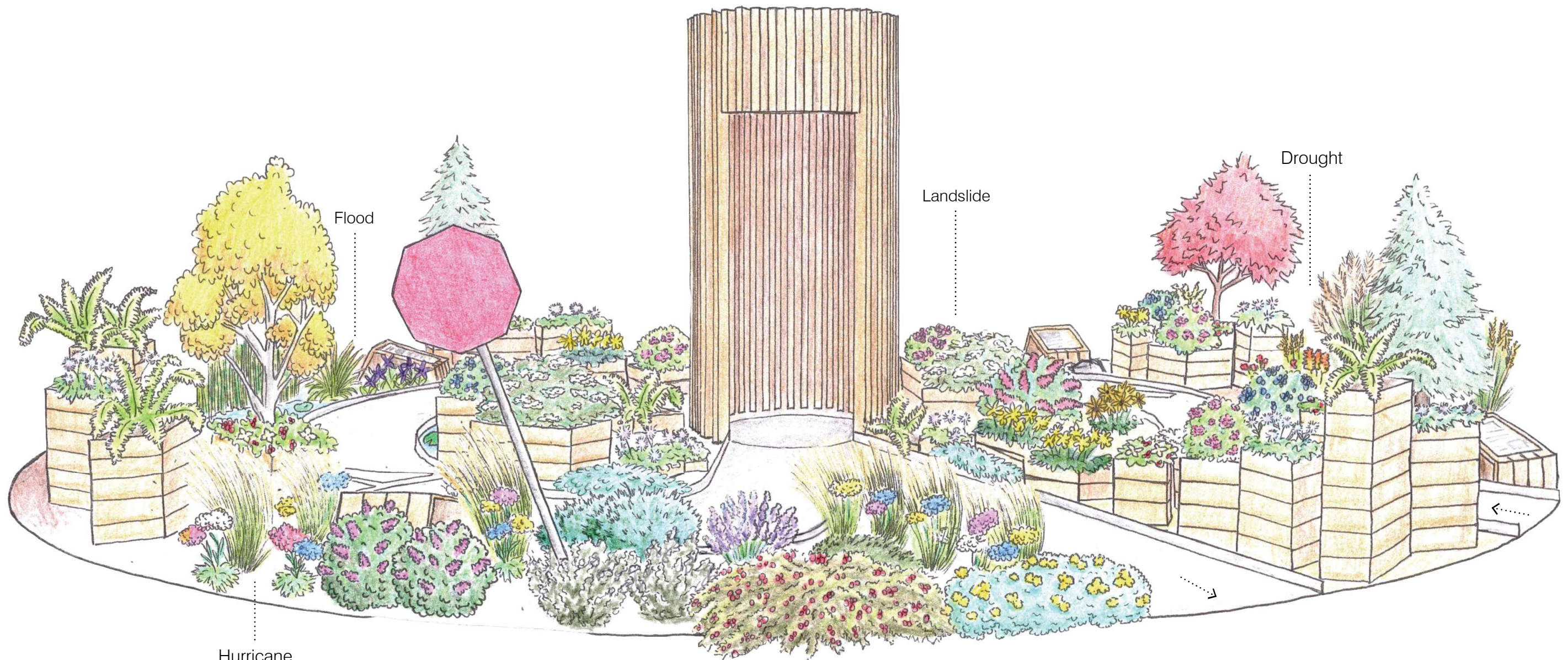




3D view



3D view



Sketch