

Garden Accents

Inspired by the cultural markers of language and cuisine, *Garden Accents* is a colorful and flavorful landscape of sloping, curving and twisting sculptural objects that are embedded inside a garden bed.

The garden ‘accents’ are derived from diacritic marks belonging to the Vietnamese language: acute (á), grave (à), hook (ã), tilde (ã), and dot (ạ). Just as these accents denote the rise and fall of tones, the colors of the sculptural accents suggest the cycle of seasons while their shapes imply direction, movement and use. Visitors to *Garden Accents* are encouraged to walk around, climb up and down, nestle inside, rest, and engage in conversation.

The five accents also inform the arrangement of the five plant types in the garden bed. Each tone is surrounded by one type of plant in emanating rows. These rows then intersect in combinations of leaf lettuce, mint, green onions, Thai basil and cilantro, representing an overlap of language and ingredients in the garden and beyond.

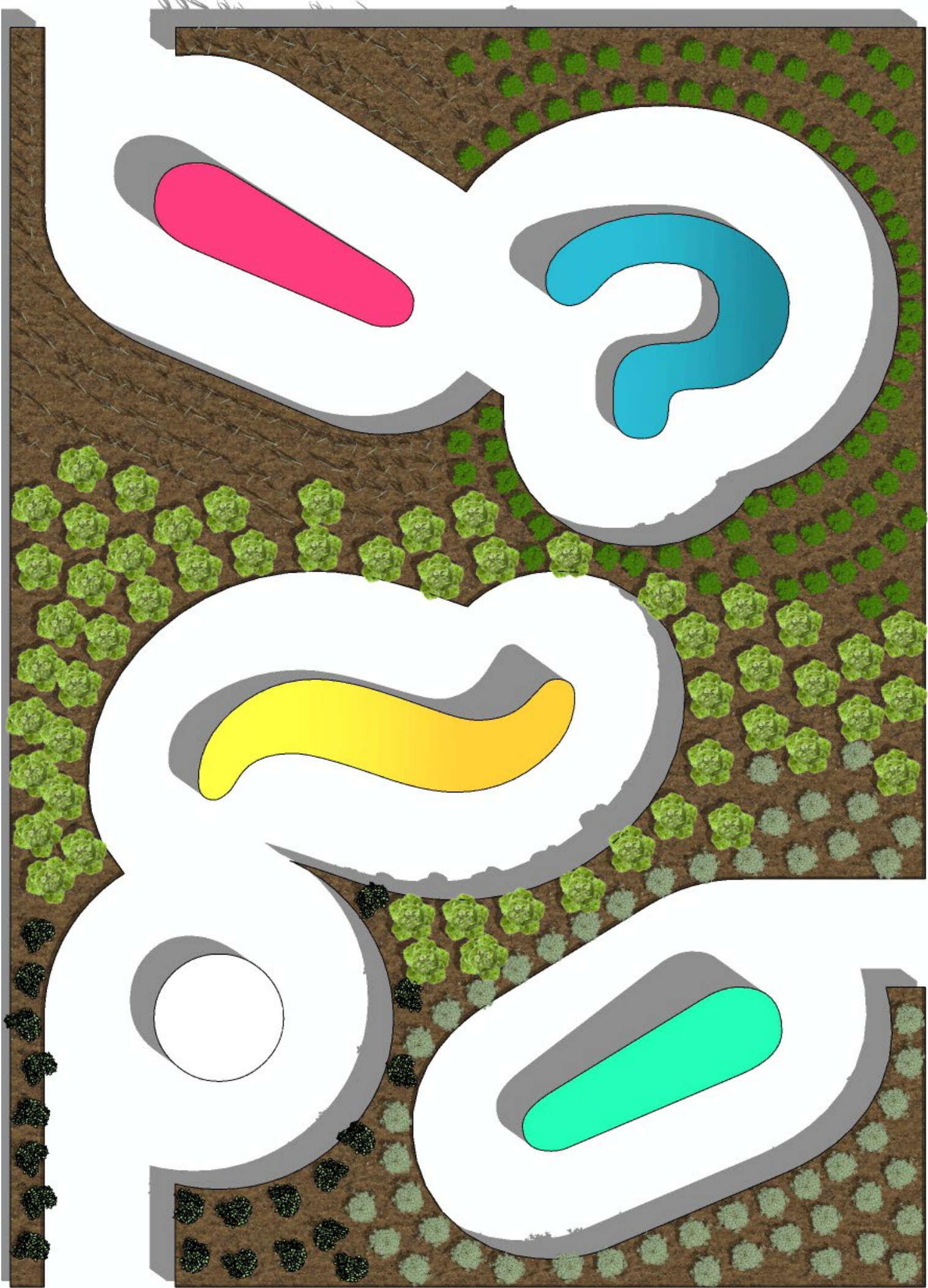
The selected greens and herbs are common to Vietnamese cuisine. If permitted, visitors are encouraged to smell and pick some plants, taking a taste of *Garden Accents* home with them.

5 Vietnamese Accents

á	à	ã	ã	ạ
acute high rising tone	grave low falling tone	hook mid dipping rising tone	tilde high rising broken tone	low heavy tone

5 Common Vietnamese Cuisine Ingredients

				
cilantro	green onion	mint	green leaf lettuce	thai basil



Garden Accents Plan View

