

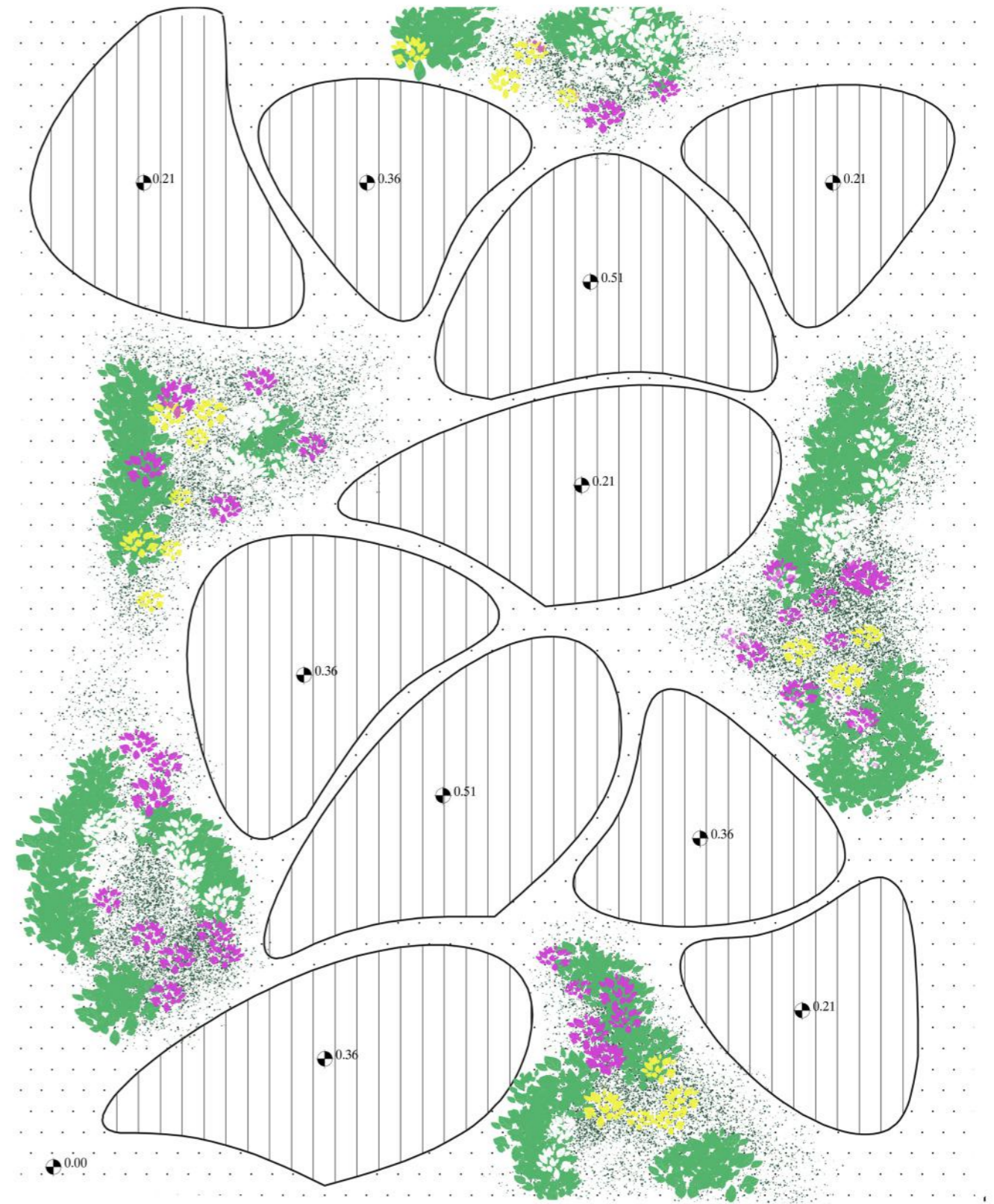
SOUS NOUS

With sous nous we have tried to interpret the current condition of our planet with a project that seeks to represent important issues such as the unconscious use of the earth in an interactive and reflective way. Our ecosystem is damaged and has become fragile under our feet, leading us to live in a precarious condition

Specifically, sous nous is the representation of an unstable and fragmented terrain designed as if they were wobbly clods of earth on which man strives to remain in balance in order to move.

The installation includes a path created on wooden plates covered with anti-trauma material, resting on springs at different height levels that the visitor can walk along.

The installation is surrounded by three types of native plants that represent the stability of the local flora that seeks to counteract an increasingly unstable planet.



plan (8x9 mt)

Cornus canadensis

Evergreen herb, blooming from may to september, able to live in shaded conditions. Grows up to above 10 inches tall.



Potentilla fruticosa

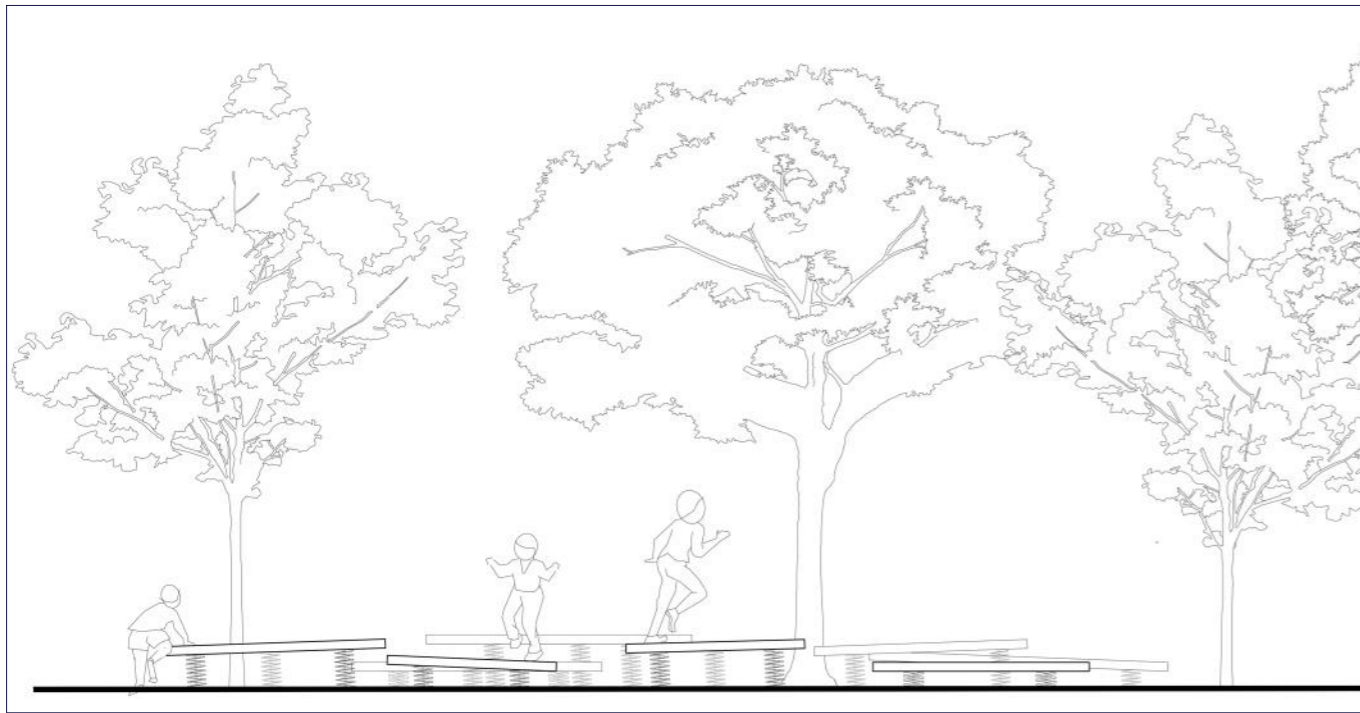
Decisuous plant flowering during summer and fall. Grows in small shrubs attracts pollinators.



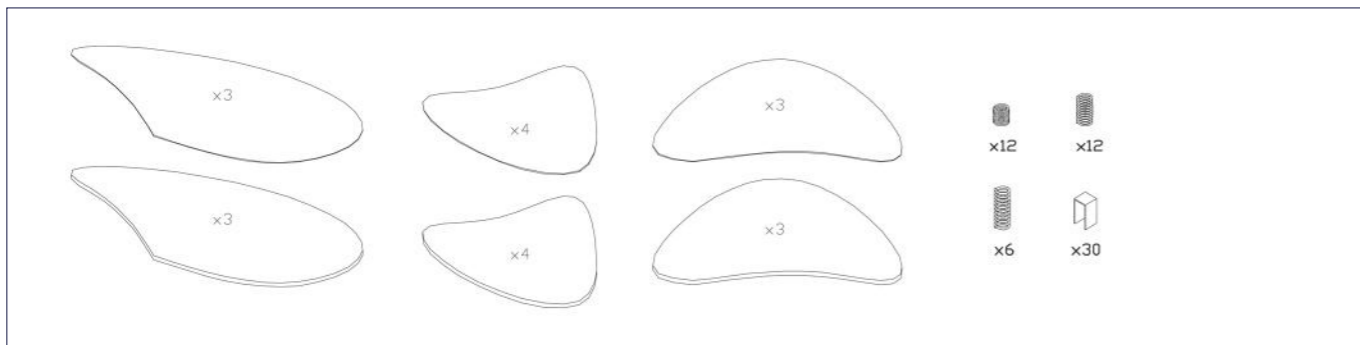
Erysimum pallasii

Plant growing in harsh environments such as sandy grounds.

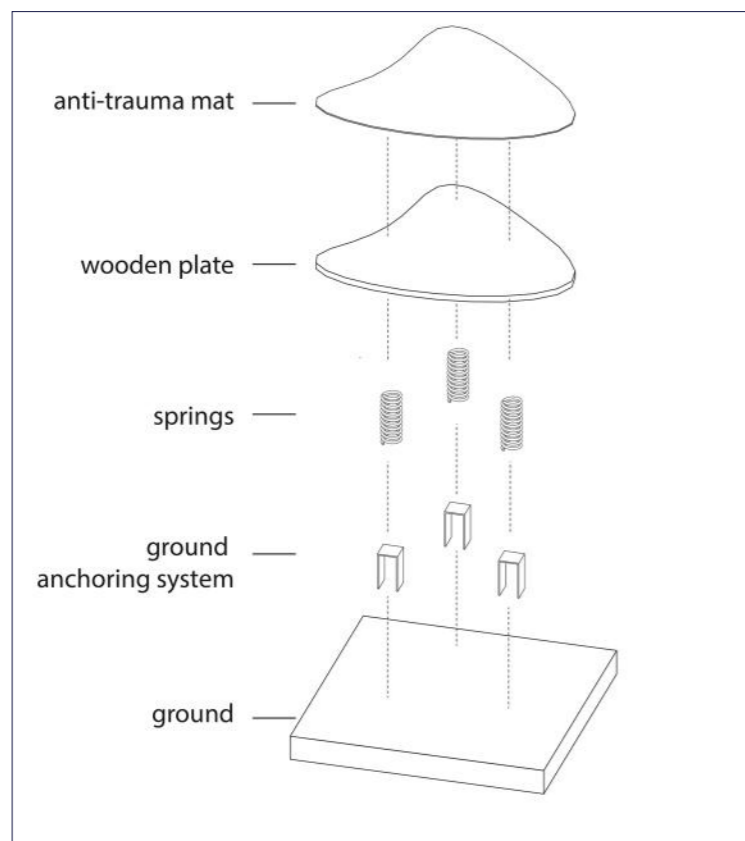




lateral view



components count



module assembly



complete view



lateral view