


Continuous reproduction: Leaves Return to Nourish the Roots

Roots are normally underground but guarantee the growth of plants by providing nutrition. Moreover, leaves fix carbon and return to nourish the roots. This circulation inspires our concept: continuous reproduction.

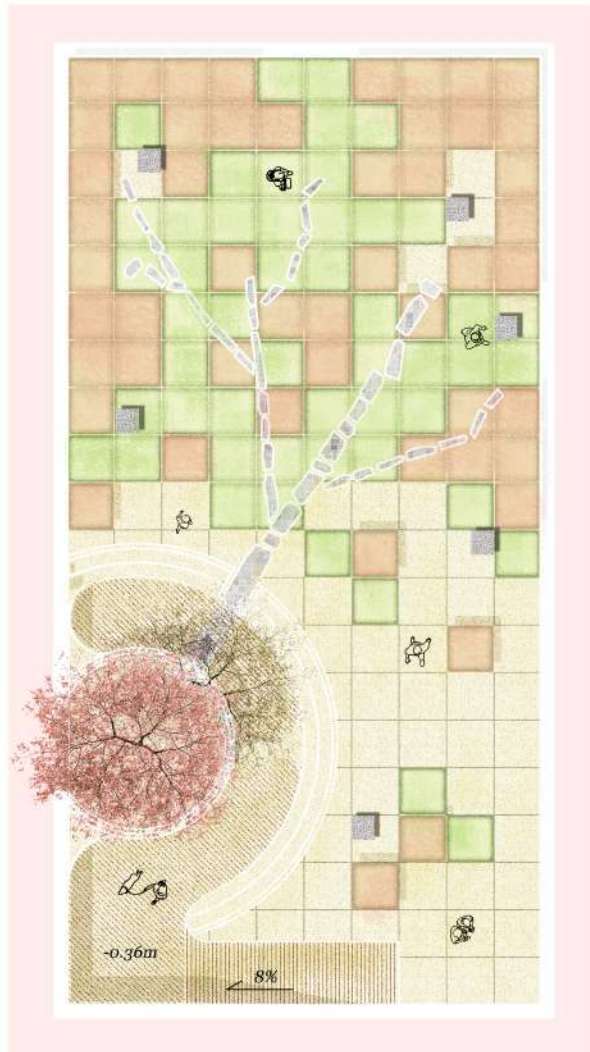
 1100 This traditional Chinese way of understanding of 'Nature'




can also be seen as the root of our philosophical way of understanding of 'Infinity' to explain the breeding in an endless succession.

A Sugar Maple can be accessed by a route guiding downwards to its 'Roots', which are represented by uneven pavements providing the experience hiking in the forest because of the roots. A pixelated shadow draws a scene of falling

leaves, which forms various small spaces by means of different vegetation.

The track presents the trunk is paved of local wasted stones in handmade way to contrast the grid framing the garden and guides the visitors to find 8 exhibited statements of Roots by people in different ages. In autumn place of experience roots can be covered by the real leaves, which make the concept in reality. (167 words)



-  *Cut-leaved coneflower (Rudbeckia laciniata)*
Height: 100 cm; Width: 60 cm
Blooms: yellow, July to September
- Hairy beard-tongue (Penstemon hirsutus)*
Height: 45 cm; Width: 20 cm
Blooms: mauve, May to June
- Harlequin blue flag; Iris versicolor*
Height: 90 cm; Width: 50 cm
Blooms: blue-violet marked with yellow and white, June to July
- Hoary vervain (Verbena stricta)*
Height: 75 cm; Width: 30 cm
Blooms: purple lavender, July to September
- False sunflower (Heliopsis helianthoides)*
Height: 90 cm; Width: 60 cm
Blooms: yellow, July to August
- Bloodroot (Sanguinaria canadensis)*
Height: 20 cm; Width: 15 to 30 cm
Blooms: white, April to May
- Western pearly everlasting (Anaphalis margaritacea)*
Height: 30 cm; Width: 40 cm
Blooms: white, August to October
- Seaside goldenrod (Solidago sempervirens)*
Height: 40 cm; Width: 35 cm
Blooms: yellow, July to September
- Slender mountain-mint (Pycnanthemum tenuifolium)*
Blooms: white, June to September
Attractions for wildlife: attracts butterflies and pollinators
-  *Poa compressa L.*
-  *Sugar maple (Acer saccharum Marsh)*

Seat + Exhibition

Roots are the things that I decided to live attached for in order to feel myself surrounded by a familiar background.
--- Lucia (30)

Roots can be roots of bamboos. The bamboo is small but the roots are long. They can be pulled out together.
--- Taoxiner (7)

Root means stable. Even they can be under soft ground, they keep the tree straight.
--- Marcel (28)

Root means family; means home that we are looking after.
--- Yuping (62)

Roots are connections beyond time and space.
--- Xiuyuan (40)

Root is the old house and the tomb in the mountains. The ancestor came here to settle down till now. Thanks to the landscape!
--- Dian(89)

Birdview



Section



±0.00 m
-0.36 m

View 1 (Root)



View 2 (Leaf)

