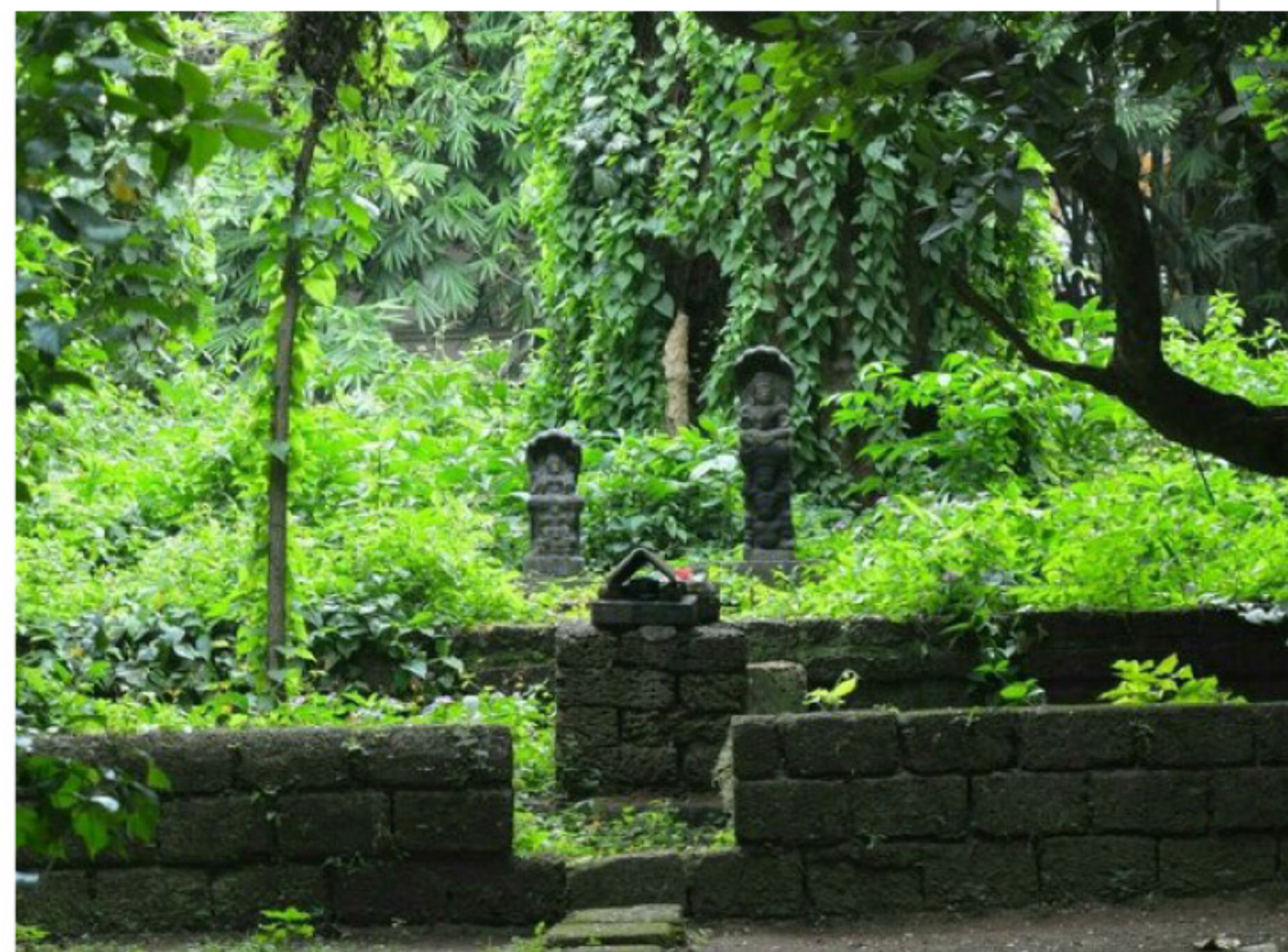


śaraná

'In India there is nothing to be seen but everything to be experienced' . Unkown

Sarana means refuge in sanskrit , this Garden is designed as a respresenative of the crucial but fast vanishing scared groves of India . Part of our spiritual and communal landscapes for centurities these atmospheric microcosms are the last bastions of biodiversity , soil and water conservation . An ecologically sensitive habitat , of small footprint that preserves biodiversity , water, soil & is a valuable repository of medicinal, natives & endemics. prevalent across geographies, regions & religions in India it exemplifies symbiotic ways of living with nature and community use. The installation will be a simple raised and planted mound , simliar to the found amidst paddy fields . The form is influenced by cosmology and snake stones. The design which is meant to create a spiritual journey taking visitors through the garden along A linear ambulatory / pathway of compacted earth, low retaining walls of local feild stone / recycled concrete slabs that creates a retenting creates an enclosure and a container to hold earth , that will have a series of medicinals (ayurvedic plants) , plants native to scared forest in similar climate zones from india and also equivalent local planting . The walk is meditative narrow and compressed that opens out to a sequence of 3 clearings , the first is bare earth for introspection, the second with an abstraction of the sacred termite mounds that traditionally sheltered snakes (biodiversity that was once key but now shunned in cities) the third is a watering hole that for the small mamals birds, insects and reptiles. In this case will hold aquatic species

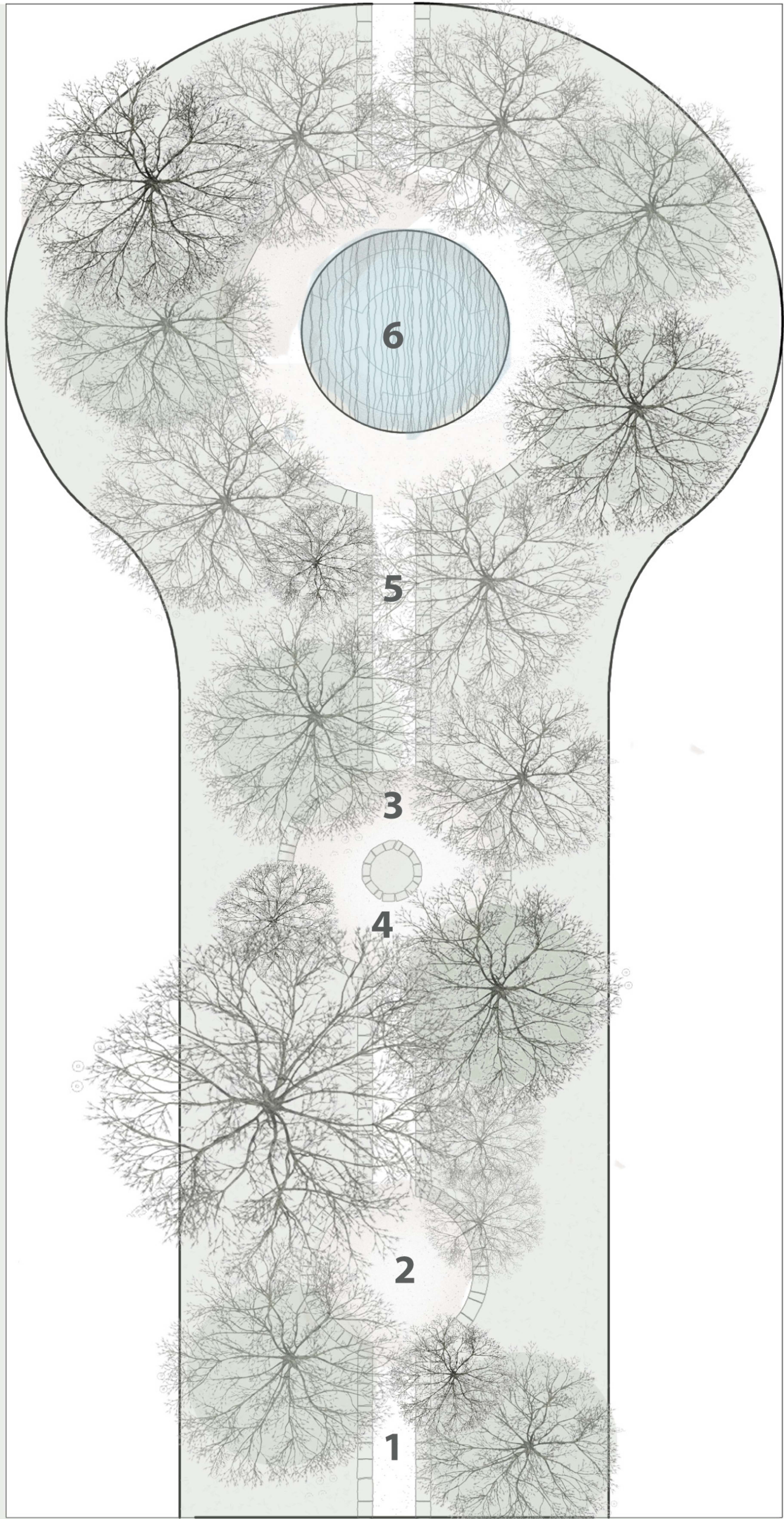
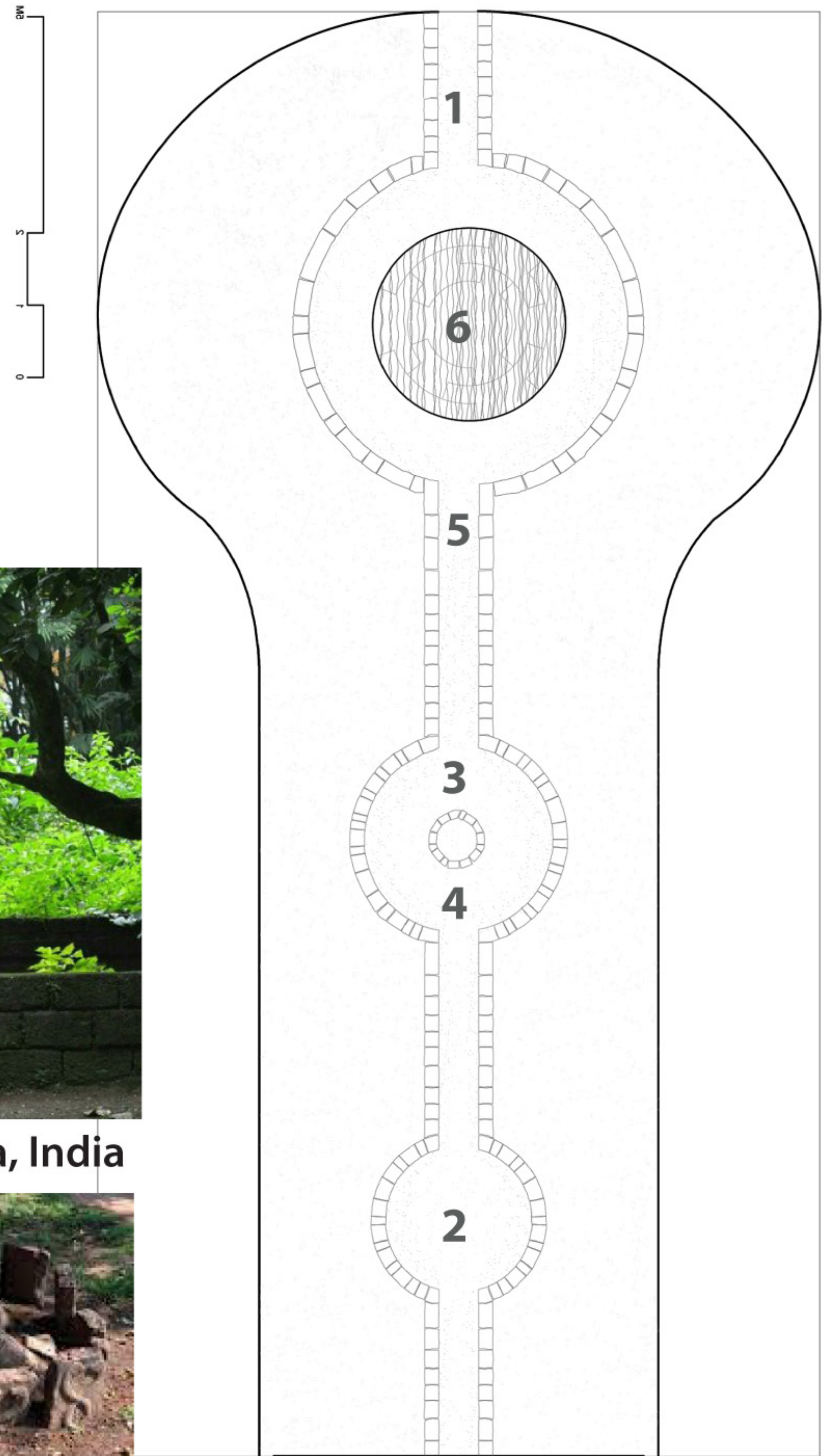
DEVAKADU 'gods forest '



Sacred Grove Sarpa kavu Kerala, India

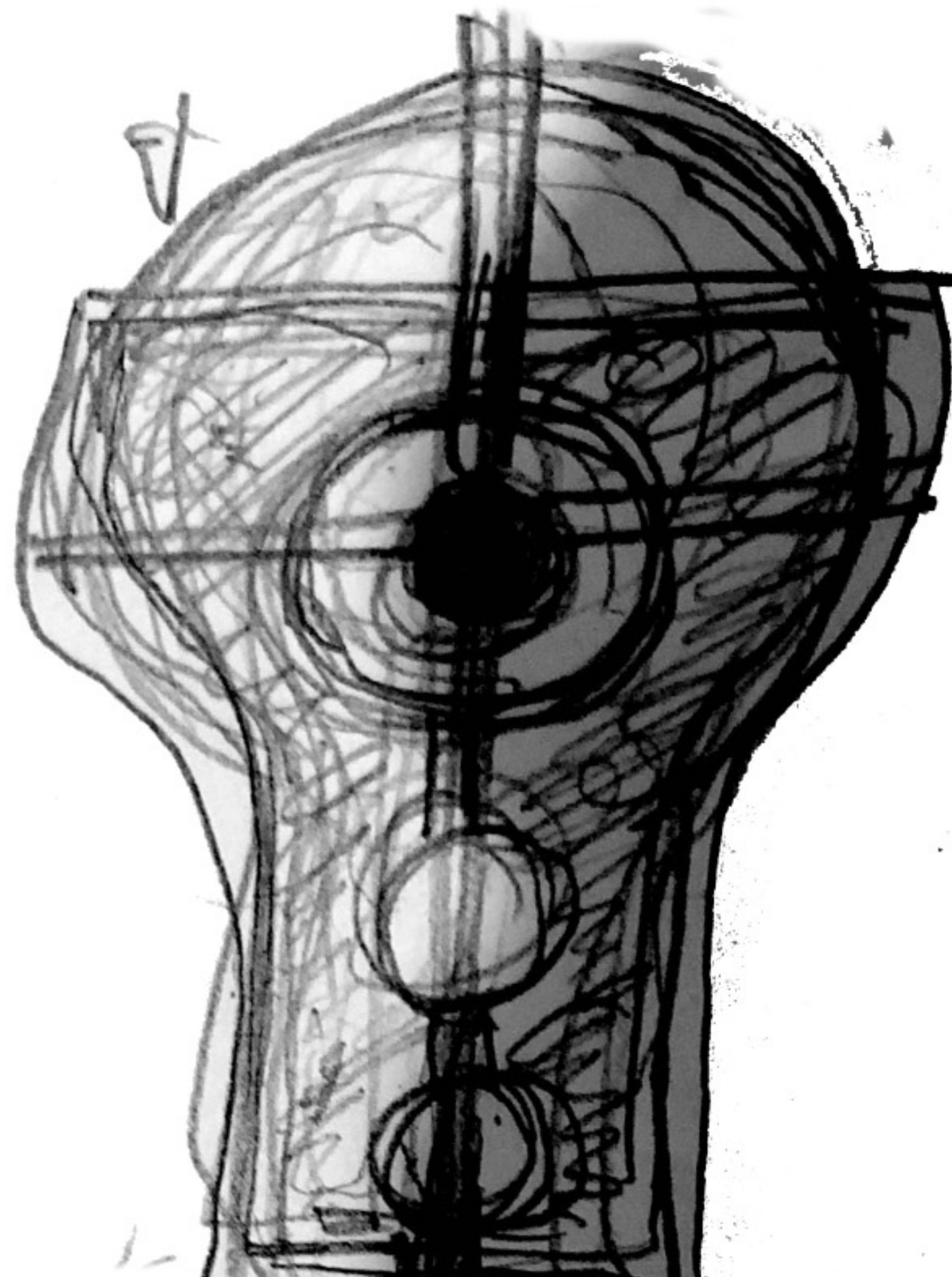


Pathways Clearnings
Retaining Walls



1. AMBULATORY / PARIKRAMA PATHWAY
 2. CONTEMPLATION CIRCLE
 3. ENCLOSURE WALLS of LOCAL FIELD STONES
 4. TERMITE MOUND (ABSTRACTED)
 5. COMPACTED EARTH SURFACE
 6. POND WITH AQUATIC LEDGES (0.5 m deep)
- A. FOREST OF TREES
B. GROUND COVER (FERNS , MEDICINALS)
C. ENCLOSURE WALLS of LOCAL FIELD STONES
D. AQUATIC VEGETATION

Plan of the Sacred Grove



Sketch

AMBULATORY PATHWAY

Multisensorial journey (barefeet

Experience a moment of spirituality in nature



SYMBIOTIC RELATIONSHIP BETWEEN

SPECIES termite mound that houses reptiles
Repository of life / hope : seeds and dna

PORTANCE :

1. reverence for nature
2. Awarness & thus conservation

śaraná



View through the garden



Elevation through the sacred grove , the ambulatoratory pathway experienced barefoot

CORE, POND

PLANTING STRATEGY

4b mixed forest subzone Köppen Climate Classification subtype Dfb ". (Warm Summer Continental Climate).
The average temperature for the year in Quebec City is 40.0°F (4.4°C) similar to Jammu and kashmir, India has the same classification (Dfb) hence with appropriate soils plants from there can thrive through the summers. Will also include local native species especially ferns as ground cover

A few plants
Ayurvedic Plants Medicinals
Vitex negundo
Ocimum sp

Fragrant plants (Olfactory)
Nymphaea odorata
Acorus sp
Biodiversity
Fruit
Musa sp (fast growing)
Punica gratum sp

Ground cover
Ferns
Lycopodium
Adiantum
Osmunda

**STONES : LOCAL STONE RECLAIMED
FIELD STONE /
RECYCLED CONCRETE
REMANANTS FOR THE WALLS AVAILABLE
CLOSE TO QUEBEC TO BE USED
(like RECY BENTON)**