

# THE DAUGHTER OF THE WIND

## RATIONALE:

THE DESIGN OF THE GARDEN WAS INSPIRED BY THE ANEMONE FLOWER, AS WAS THE NAME: ANEMONE MEANS DAUGHTER OF THE WIND IN GREEK.

THE GARDEN OFFERS A SENSORY SPIRITUAL EXPERIENCE THAT BEGINS ON APPROACH TO THE SPACE.

IN THE TREES AT EITHER ENTRANCE, HANDMADE CERAMIC BOWLS HOLD BURNING BOTANICAL INCENSE, CREATING A SCENTED INVISIBLE GATE AND AWAKENING THE SENSES.

THE DAUGHTER OF THE WIND OPENS UP WITH TWO PATHS ON EITHER SIDE, WHERE SIGNS INVITE VISITORS TO WALK BAREFOOT THROUGH THE GARDEN. AS THE SIGNS EXPLAIN, WALKING BAREFOOT ENABLES THEM TO FULLY EXPERIENCE THE GARDEN, FEEL ROOTED, AND CONNECT WITH THE SPACE AND THE PRESENT MOMENT.

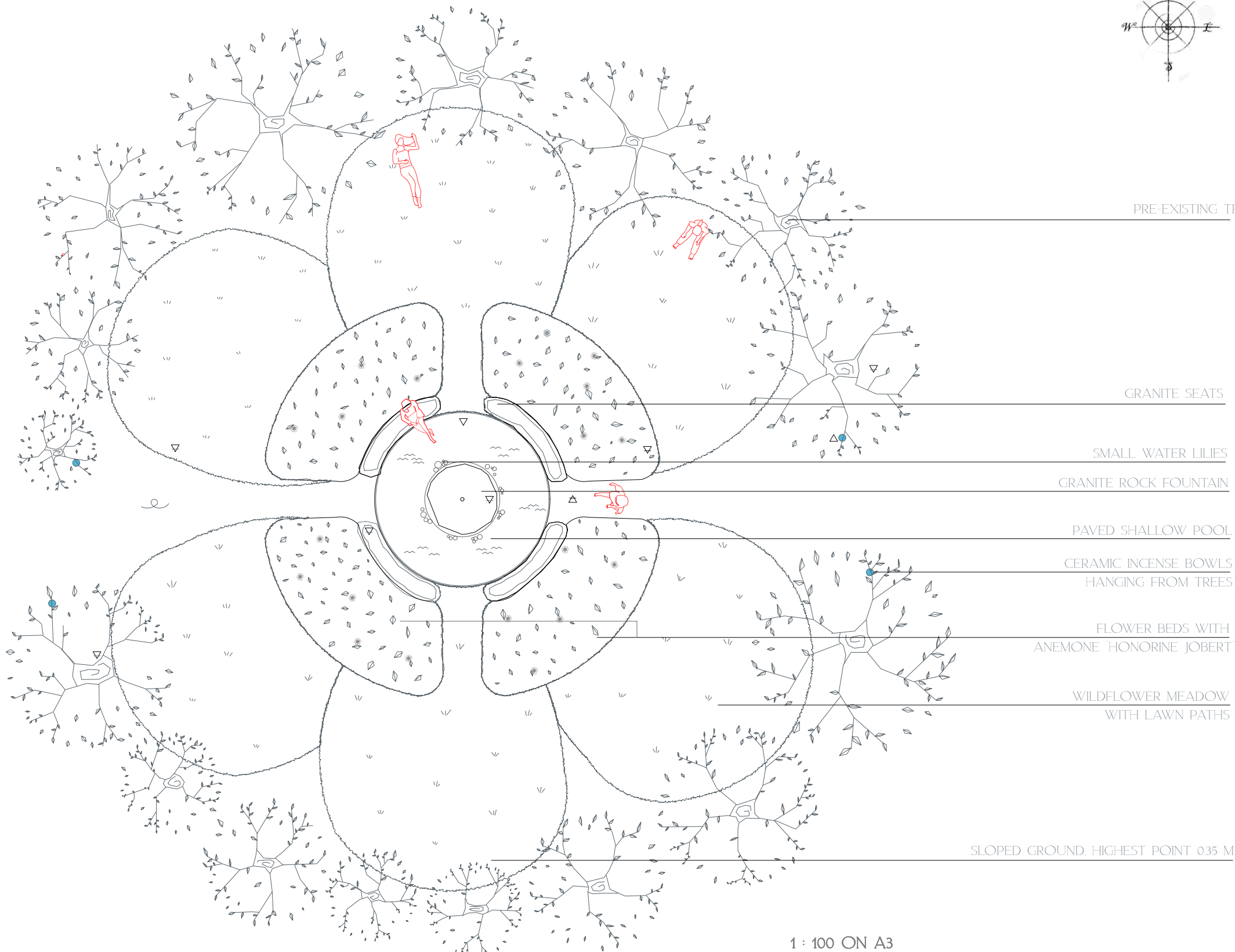
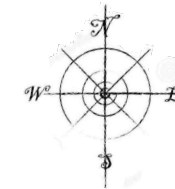
AS THE VISITORS WALK ON THE LAWN PATH, THEY ARE WELCOMED BY A SURPRISING SIGHT: A ROCK FOUNTAIN ENVELOPED BY BED OF THRIVING ANEMONES. CONTINUING FURTHER, THE VISITORS ARE NOW SURROUNDED BY THE FLOWERS, AND THE MAJESTIC SHALLOW POOL AND ROCK FOUNTAIN APPEAR IN FULL VIEW.

USERS CAN RELAX AROUND POOL, WHERE FLAT ROCKS ALLOW THEM TO SIT AND FEEL THE SPACE. THEY ARE GROUNDED BY THE SOUND OF THE FALLING WATER, ITS TOUCH ON THEIR FEET, AND THE SOOTHING SITE OF THE WATERLILIES.

AT A CERTAIN TIME OF THE DAY, VISITORS ARE INVITED TO PARTICIPATE IN A SHORT RITUAL. THEY CHOOSE A PHRASE DESCRIBING A DESIRE THEY WANT TO MANIFEST OR A FEELING THEY WISH TO LEAVE IN THE PAST. PLACING THE DESIRE IN A MAGIC CERAMIC CAULDRON CONTAINING A CANDLE, THEY USE THE CANDLE FLAME TO BURN THE SMALL PIECE OF PAPER CARRYING THEIR CHOSEN PHRASE.

## PLANT SPECIES:

- ANEMONE HONORINE JOBERT
- NYMPHAEA 'ARC-EN-CIEL'
- EXISTING TREES ON SITE
- SHADE TOLERANT WILDFLOWER MEADOW IN ROLLS OR SEEDED



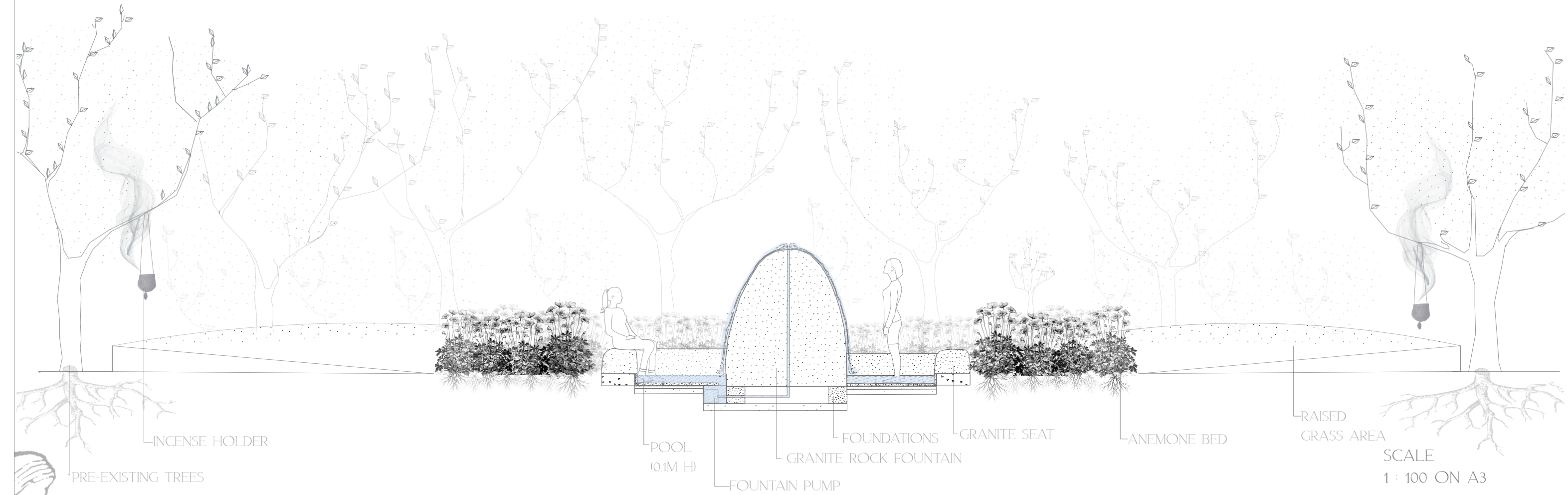
1 : 100 ON A3



TOTAL AREA: 248 M2 (TREES NOT INCLUDED)  
 LENGTH FROM CENTRE TO END: 9 M (TREES NOT INCLUDED)

△ ▽ △ ▽ THE 4 ELEMENTS IN THE GARDEN

# THE DAUGHTER OF THE WIND



GARDEN VIEW PERSPECTIVE

