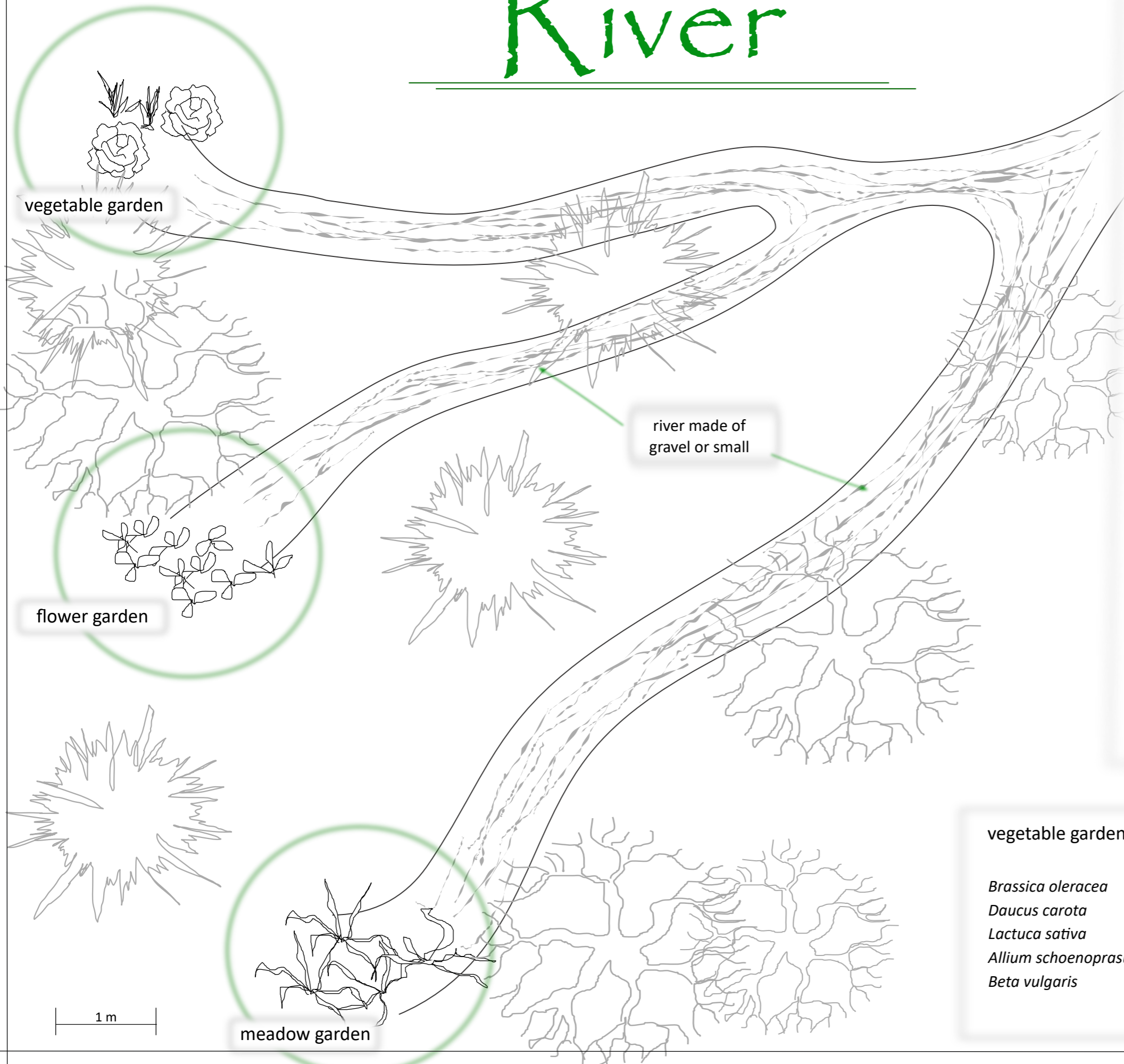


River



The garden can be defined as an area separated by a fence, where crops, fruit, vegetables, herbs were originally grown and over time also ornamental plants. For centuries, the garden in its form took a more or less geometrical form, presenting with its appearance the power and dominion of man over nature, and including more and more artificial elements.

With the apparent constancy of the once formed garden, there is constant changeability in it. You cannot enter the same river twice, the water in it will be already changed, you cannot enter the same garden twice, it will change as a response to changes of the weather, seasons of the year, the maturity of plants or light depending on time of the day....

The water flows the whole time, being a dynamic element of the nature and at the same time it serves as indispensable element without which, the life of a garden is not possible, a garden composed of living elements as in the beginning of its existence, without yet of artificial elements.

Almost all plants cannot live without their roots, the garden cannot live without water. It is its root and fix factor in its constant liability.

vegetable garden

Brassica oleracea
Daucus carota
Lactuca sativa
Allium schoenoprasum
Beta vulgaris

flower garden

Rudbeckia hirta
Cosmos bipinnatus
Delphinium ajacis
Calendula officinalis
Lupinus hartwegii
Bergenia cordifolia

meadow garden

Hemerocallis fulva
Hordeum jubatum
Deschampsia caespitosa
Muhlenbergia capillaries
Pennisetum alopecuroides

1 m

River

