



## We Are Changing

Confronted with ever-changing circumstances, life must constantly adapt to survive. Yet it must also confront the dual nature of adaptation: survival, but only through a kind of death, evolving beyond recognition.

Embodying this contrast, our garden features two landscapes: a dinosaur's final resting place and a bird into which the ancient species eventually evolved.

Visitors enter a path along the spine of a dinosaur's sprawling form, encountering benches, recreational and relaxation zones styled from the creature's partially exposed remains. This landscape is characterized by black tones, oil can vertebrae and oozing organic shape, referencing the oil into which fossilized life eventually transforms, and a barrier of plastics fashioned from its petrochemicals.

The surrounding floral garden of the birds features a chromatic plant collection contrasting with the center. An access arch of plumage transitions from a gradient of recycled plastics to plants, with text announcing: "We Are Changing".

The metaphorical dialogue is accentuated by vegetation, materials, color, forms, and use with the hope that today more than ever the visitor will remember: change is inevitable but transformation is a choice.



Recycled plastics in containment



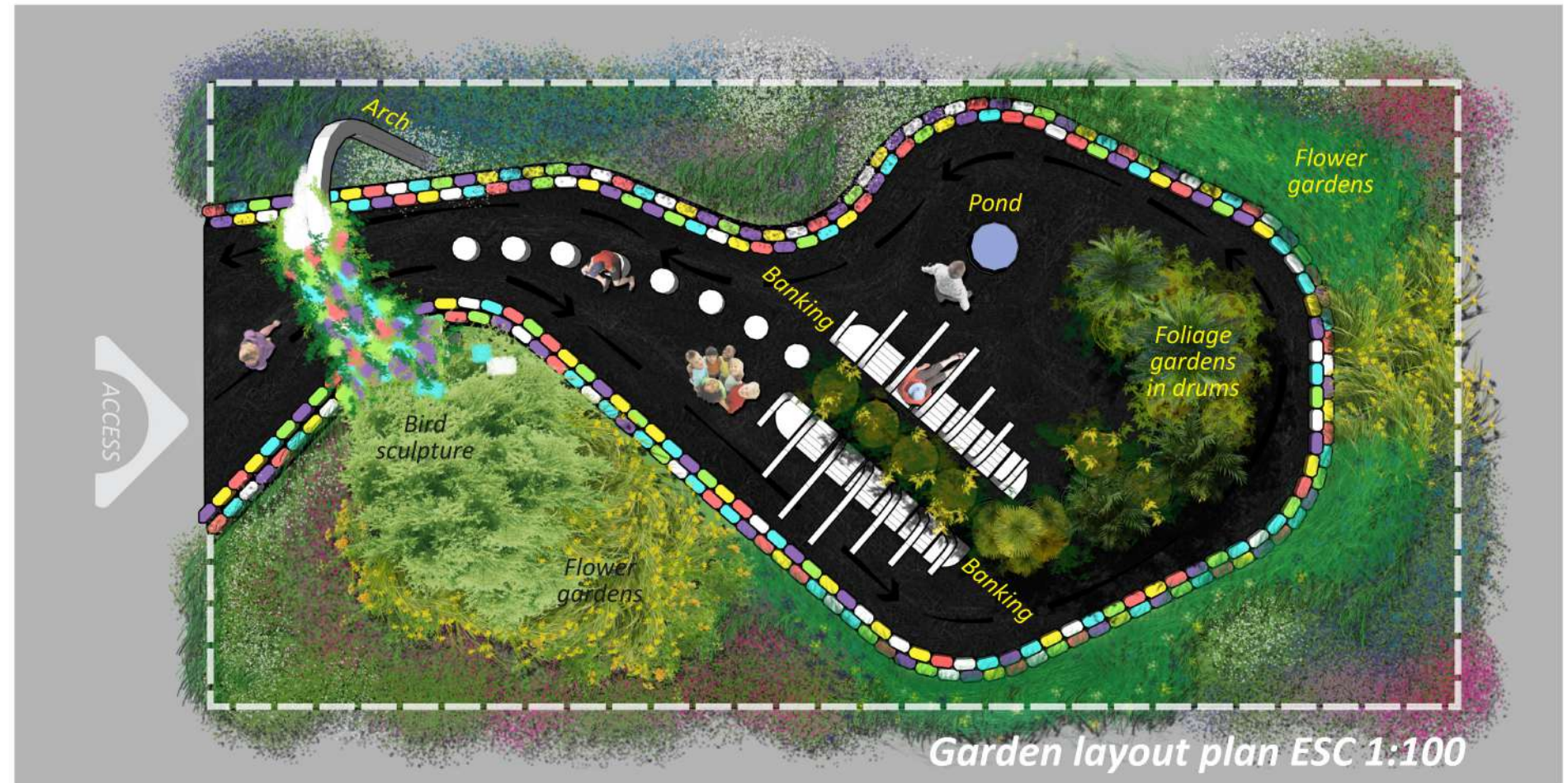
Black mulch



Concrete furniture



Oil drums as pots



## Suggested floral garden plants

Collection of ferns, cycads, bamboo and palms



## Suggested foliage garden plants

Collection of wild flowers, milkweed, salvias, cosmos, mainly





Garden perspective



Image 1



Image 2