

CONCEPT and EXPERIENCE

As a product of human will, the garden cannot adapt itself, it is not a resilient organism, it is not natural, but a *beautiful artifice*. However, it can adapt through human knowledge and techniques, developed over the millennia, starting from *agronomic techniques*. The *drywall* is an anti-erosion system, which protects from the wind and produces water by capturing the humidity in the air, the *movable roofs* protect from sudden climatic changes (hail, snow, too much sun) the different *flooring* make the plants adapt better, they are also *auxiliary* to each other and willing to recall the *synergistic garden*.

A new equal relationship is established between man and garden: it gives us our *utopia* and we make sure that it can survive effortlessly through the changes we are all facing. We just have to listen to it, it is telling us: *adapt me!*

The visitor will be able to walk among the herbaceous, shrubby and arboreal plants, the stone devices feeling the different floors under the feet and can create areas of light or (colored) shadows by moving the covering panels.

LIST of SUGGESTED PLANTS

- Acer rubrum

Achillea millefolium

Allium stellatum

Ambrosia artemisiifolia

Betula papyrifera

Carex aurea

Cornus stolonifera

Coptis trifolia

Crataegus succulenta

Diervilla lonicera

Diphasiastrum digitatum

Ilex verticillata

Iris pseudacorus
- Osmunda claytoniana

Populus tremuloides

Rhododendron canadense

Rudbeckia fulgida

Salix lucida

Saxifraga aizoides

Taxus canadensis

Teucrium canadense

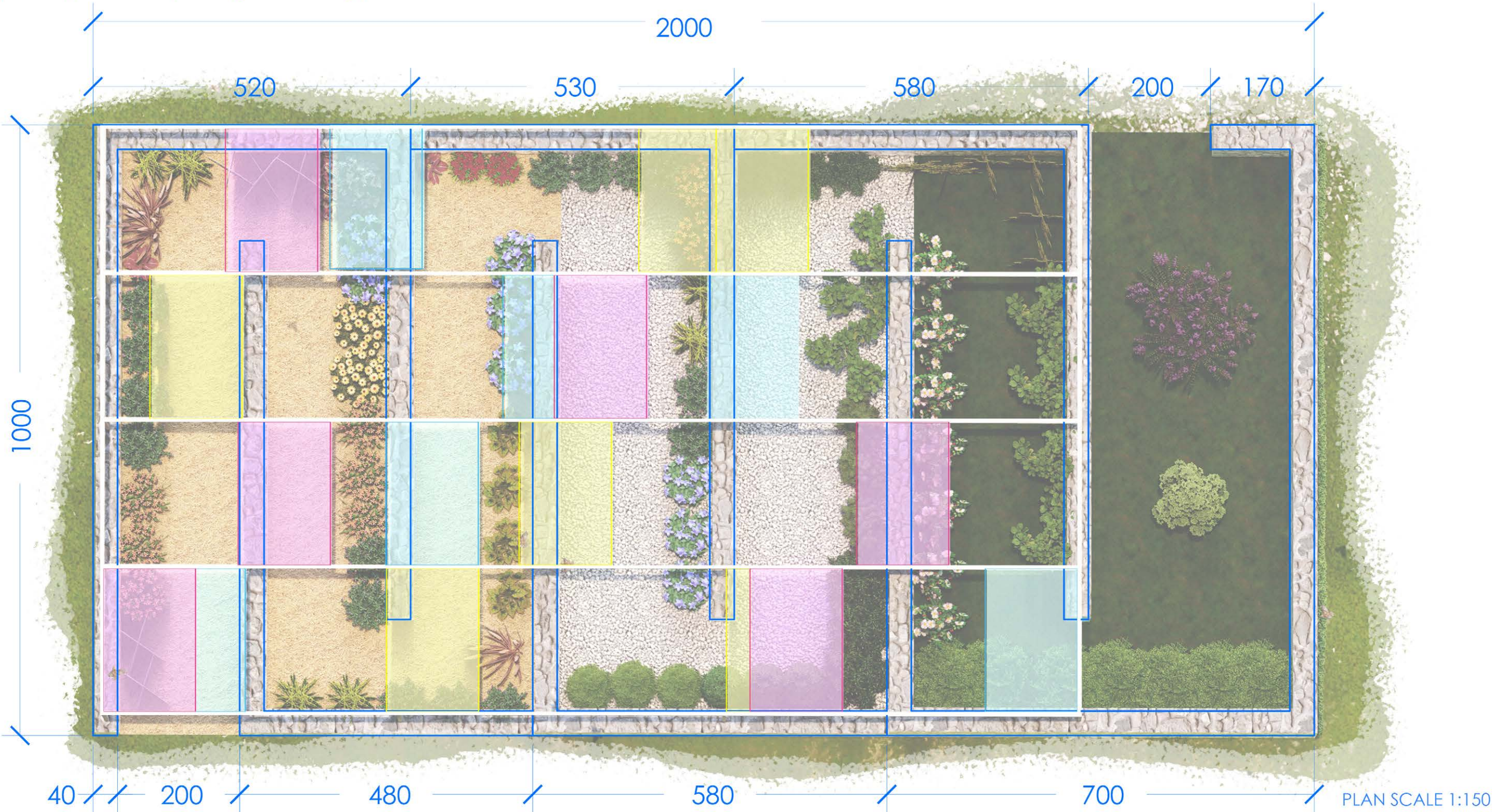
Tsuga canadensis

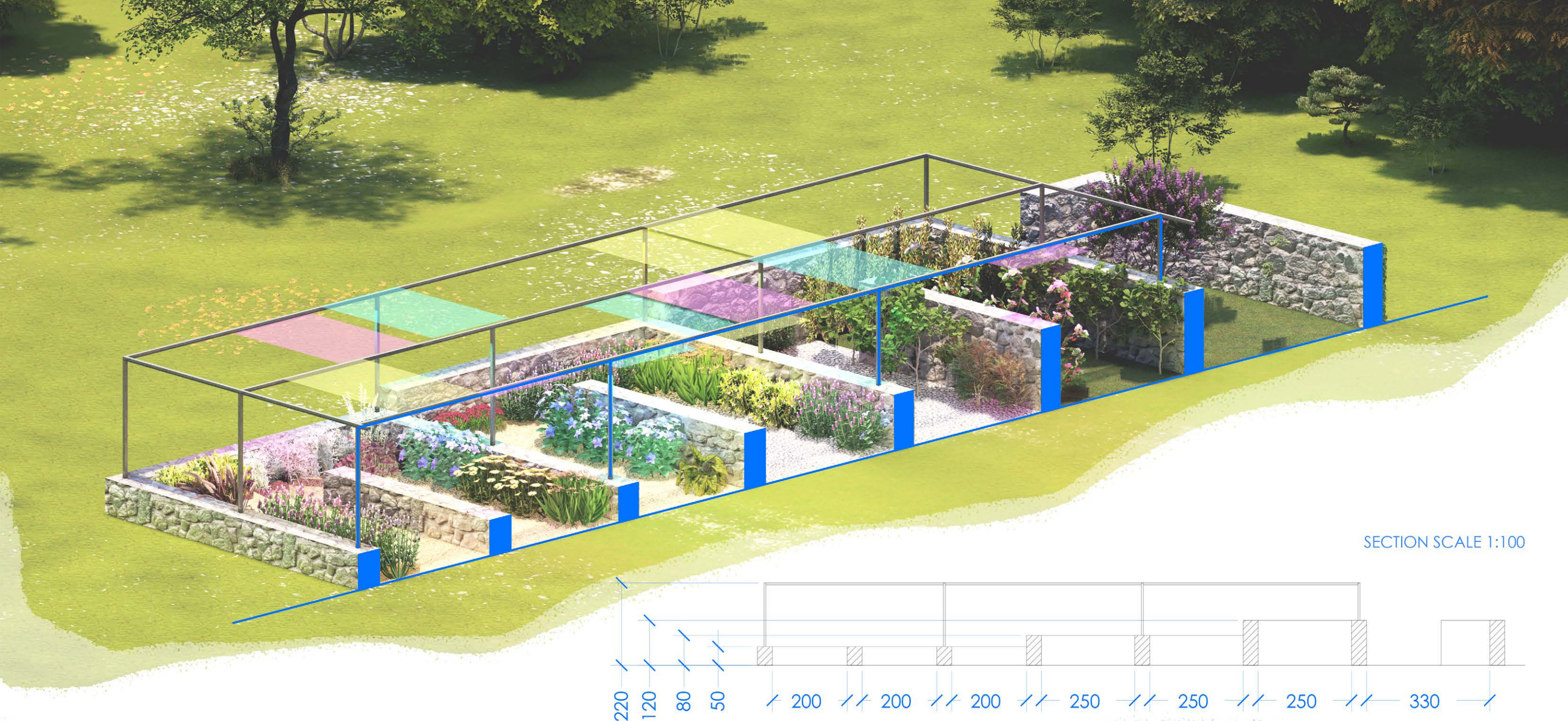
TYPE of PLANTS

TREES

SHRUBS

HERBACEOUS PLANTS





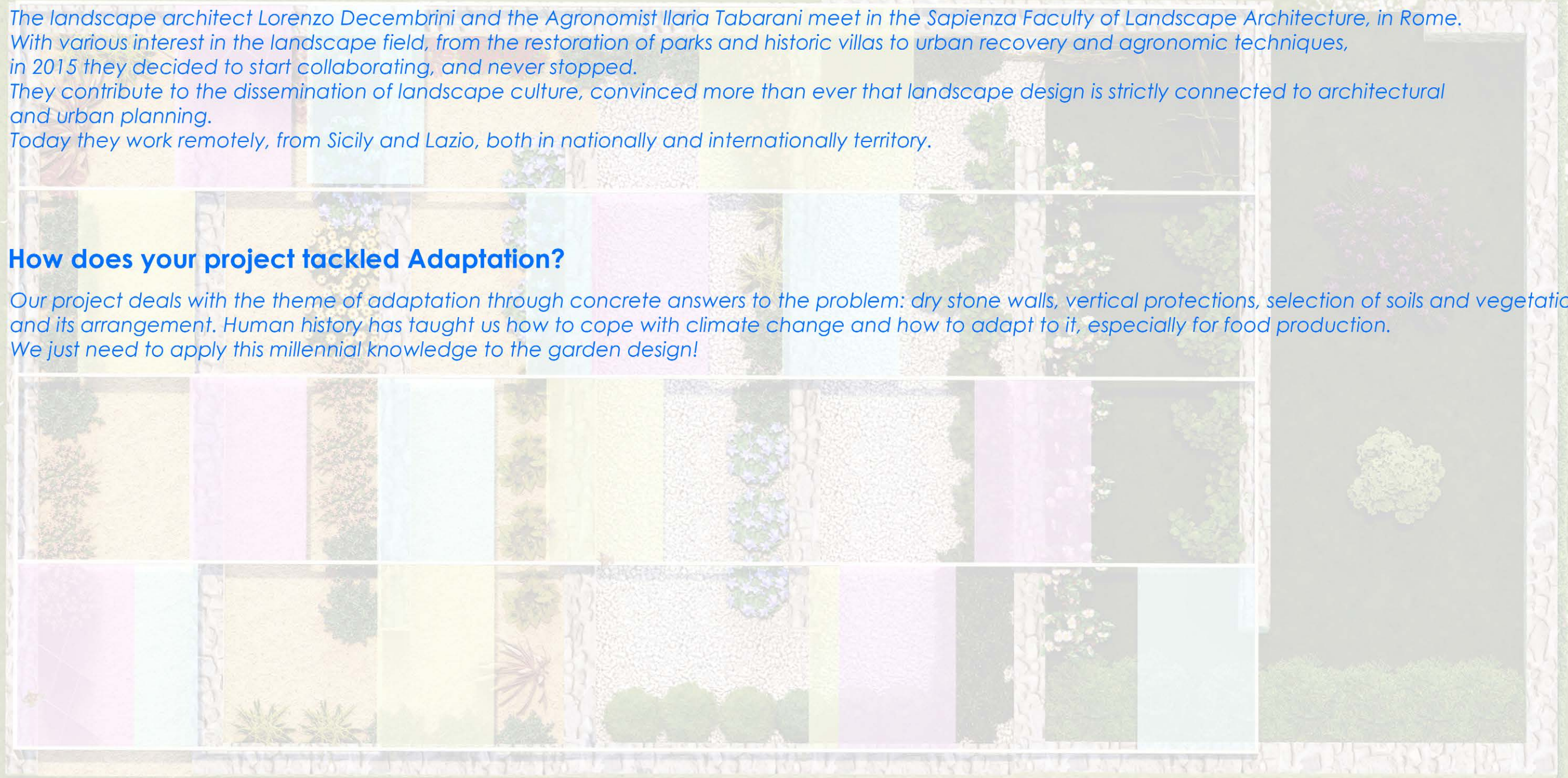
ADAPT ME!

by Ilaria Tabarani - Landscape architect & Agronomist in Rieti (Italy)
Lorenzo Decembrini - Landscape architect in Catania (Italy)

The landscape architect Lorenzo Decembrini and the Agronomist Ilaria Tabarani meet in the Sapienza Faculty of Landscape Architecture, in Rome. With various interest in the landscape field, from the restoration of parks and historic villas to urban recovery and agronomic techniques, in 2015 they decided to start collaborating, and never stopped. They contribute to the dissemination of landscape culture, convinced more than ever that landscape design is strictly connected to architectural and urban planning. Today they work remotely, from Sicily and Lazio, both in nationally and internationally territory.

How does your project tackled Adaptation?

Our project deals with the theme of adaptation through concrete answers to the problem: dry stone walls, vertical protections, selection of soils and vegetation and its arrangement. Human history has taught us how to cope with climate change and how to adapt to it, especially for food production. We just need to apply this millennial knowledge to the garden design!

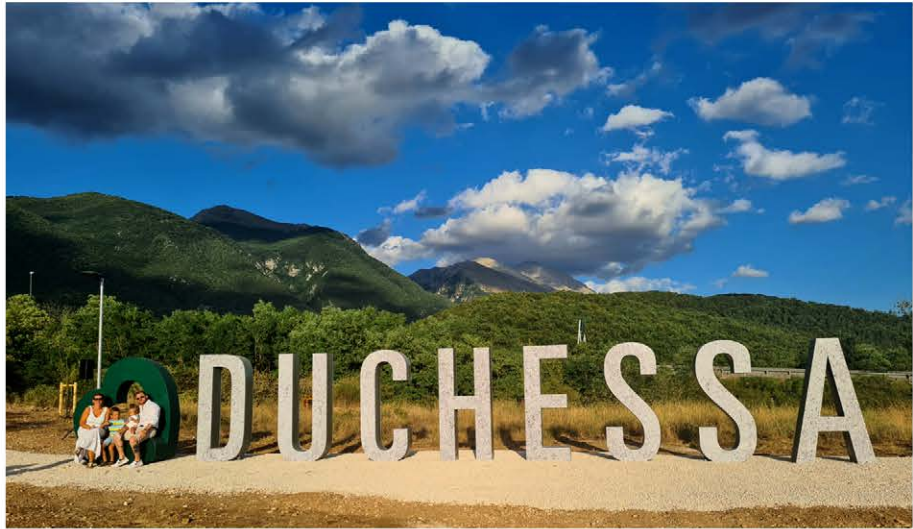


by Ilaria Tabarani - Landscape architect & Agronomist in Rieti (Italy)
Lorenzo Decembrini - Landscape architect in Catania (Italy)

"Può un giardino produrre acqua?" Radicepura Garden Festival, Giarre, Sicily -Italy



"I <3 Duchessa" a place branding project" Riserva NATurale Regionale Montagne della Duchessa, Borgorose, Rieti - Italy



Ilaria Tabarani
Vicolo Margherita, 4 -02048-
Stimigliano (Rieti) Italy.

+39 339113378
2paesaggisti@gmail.com
2paesaggisti.it