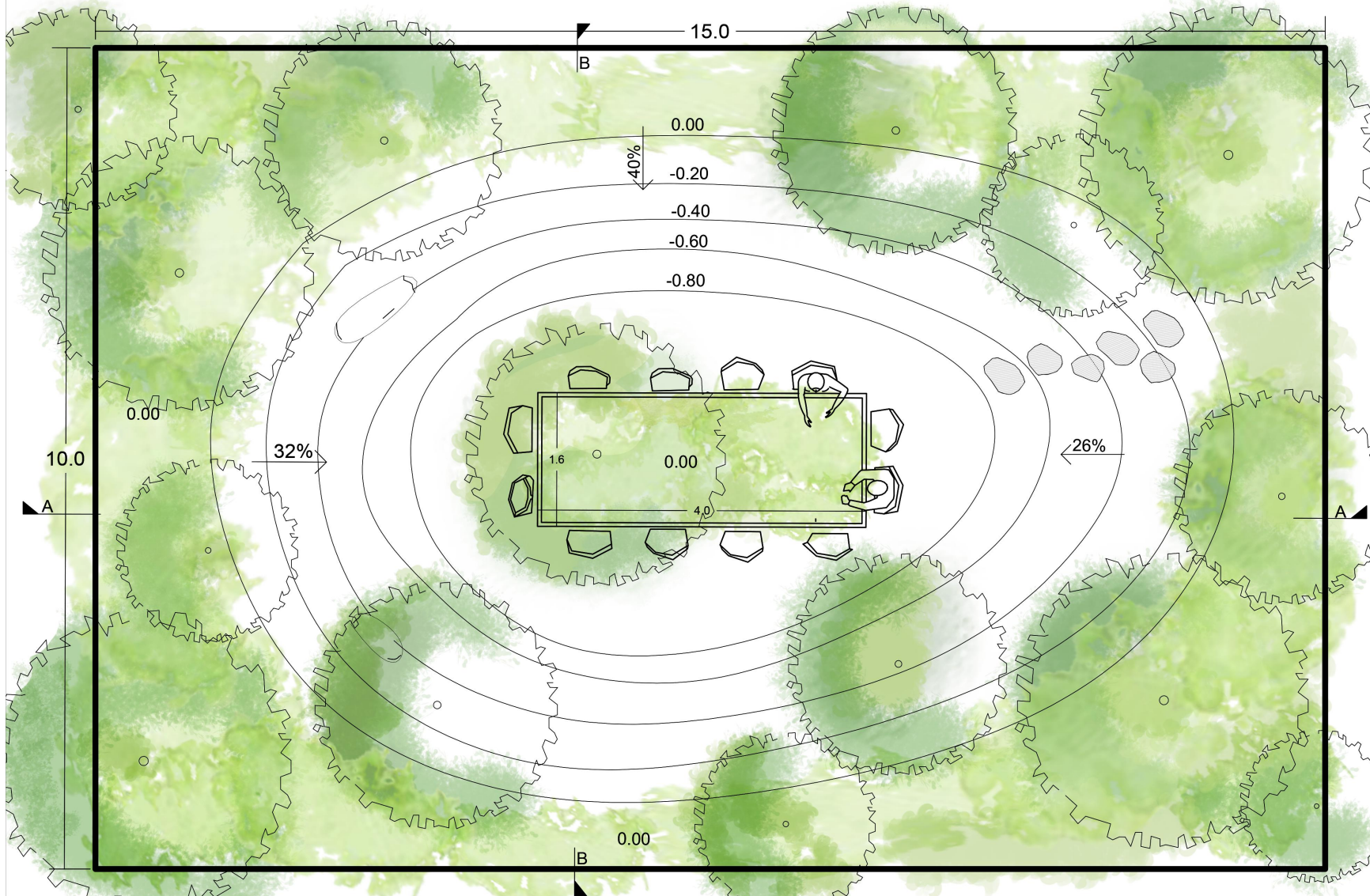
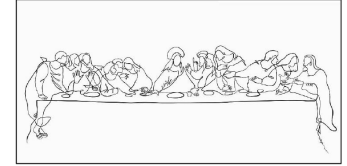



Solvation garden

This is a critical time for our planet: we see terrible floods along severe droughts, extreme temperatures, and a complete lack of balance. If we do not join forces and work together to solve these pressing problems, we will reach an irreversible point with no prospects for the future. In my garden I suggest the visitors to get to the root of the problem, to sit down and courageously think together of possible solutions. This is an invitation to join forces and promote a real change. At the center of my garden about a meter below ground level I have set a large

conference table for visitors to take a seat. This trench-like sitting area is meant for times of flooding, when we will face our problems with our feet in the water. The chairs around the table are in different sizes, suitable for both adults and children. The table is made of recycled wood, and serves as a small garden itself: layered with soil, various plants and seeds will grow inside according to the change of seasons, presenting themselves on top.



Scale: 1:50

Plants area 

Ground 

Walking stone 

Log 

Chair 

Baby chair 

Suggested plants list:

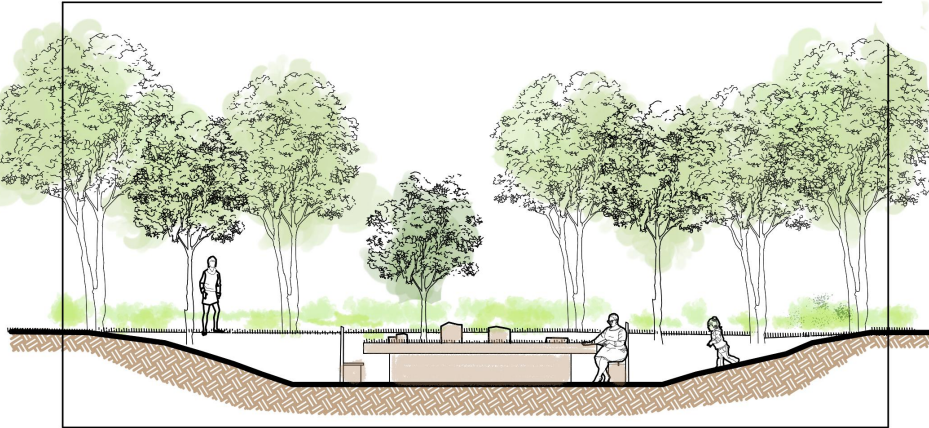
- * Asrum canadense - canada wild ginger
- * Viola sororia - common blue violet
- * pennsylvania sedge
- * Painted trillium
- * Woodsia Ilvensis

Solvation garden

Elevations and prespective

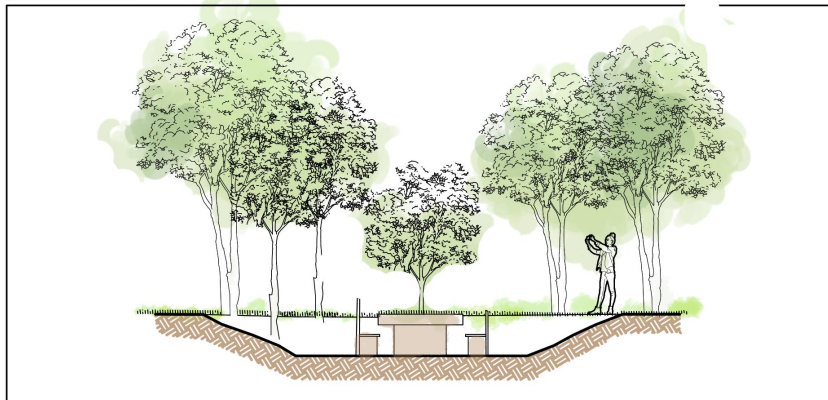
Elevation A-A

Scale: 1:100

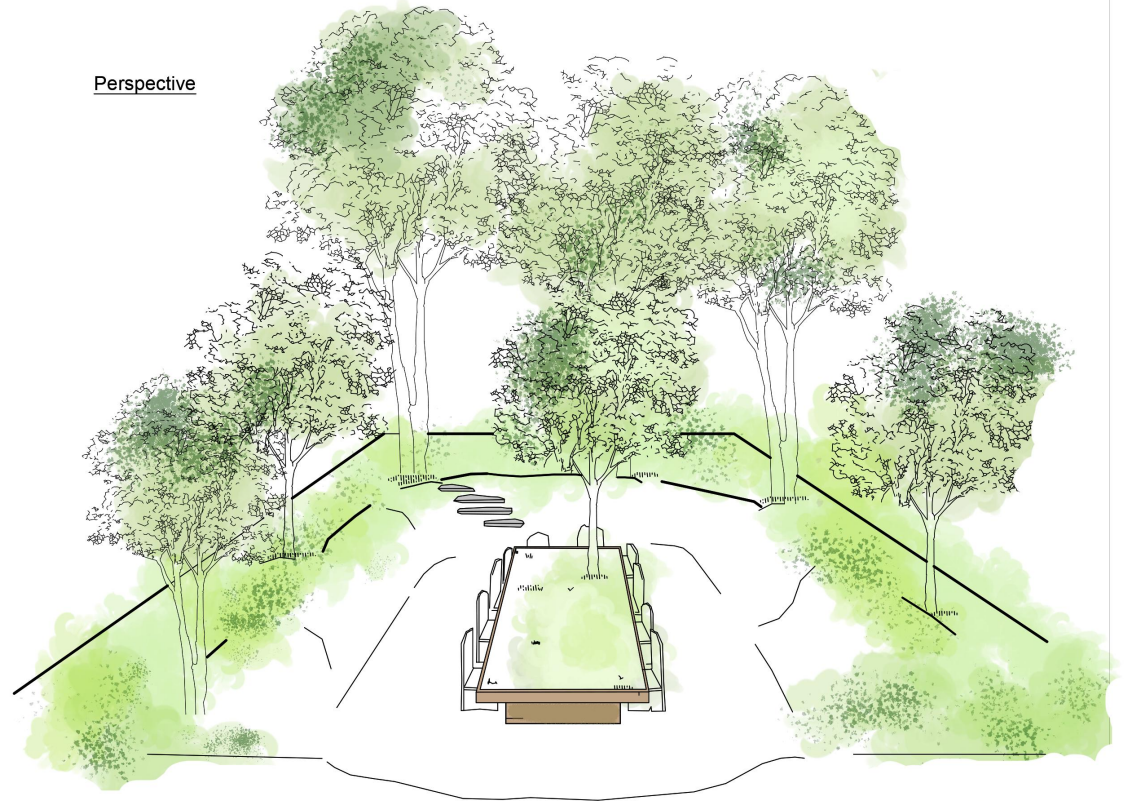


Elevation B-B

Scale: 1:100

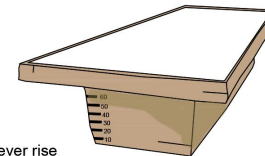


Perspective



12 Chairs made out from recycled wood in a different heights.

Water lever rise measurement



A table made of recycled wood filled with garden soil. Inside it is planted a meadow with seasonal seeds.