

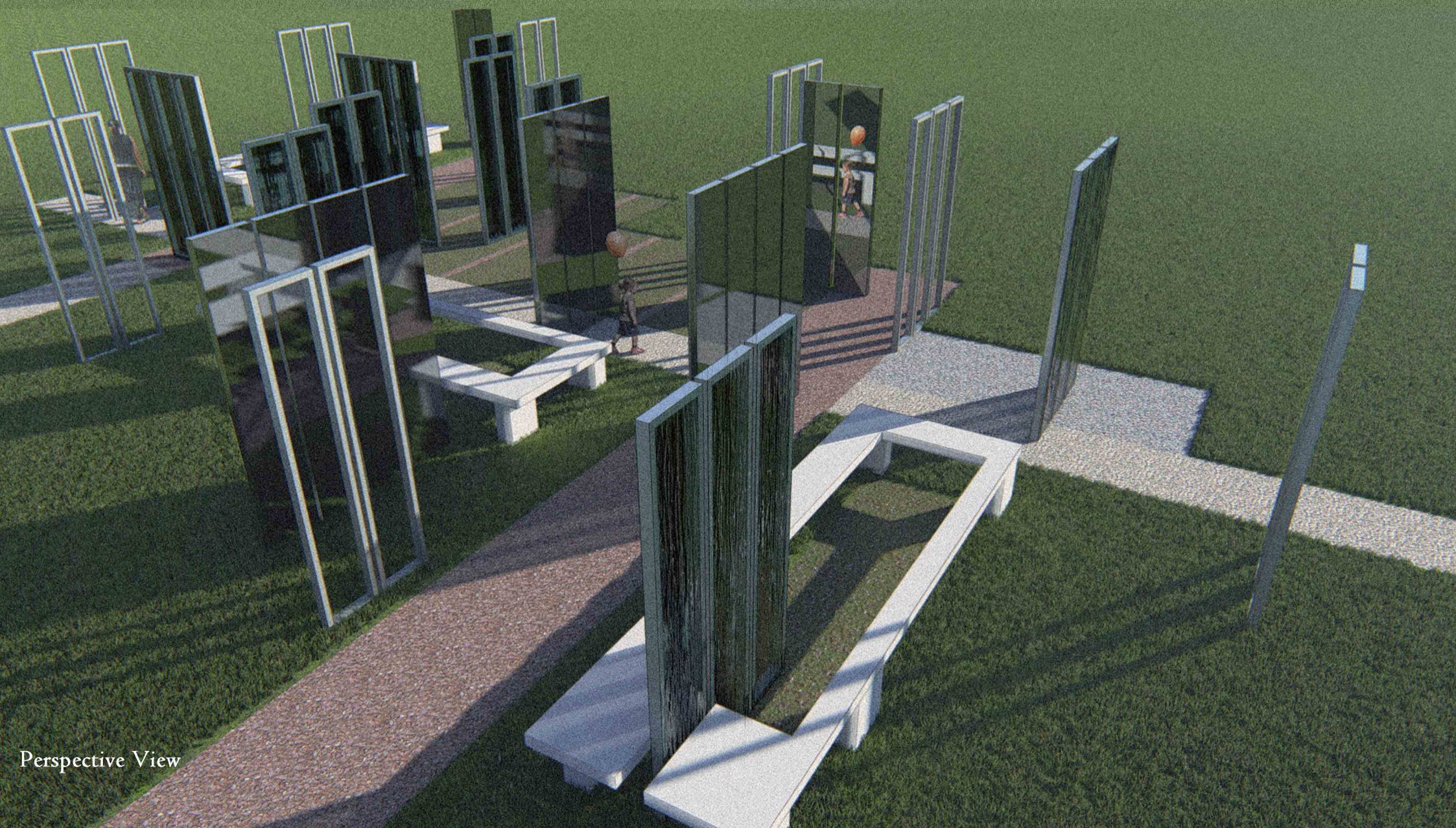
# FACE TO FACE

In the post-colonial context, cultural exchanges among the world's peoples have become more and more frequent. Especially for the non-Western world, nations are experiencing a cultural revival movement, and the self-identity system of the people is being re-established. In this context, the boundaries between the self and the other and the self are both clear and interpenetrating, and are gradually transitioning from singularity to complexity, which is the charm of the ego.

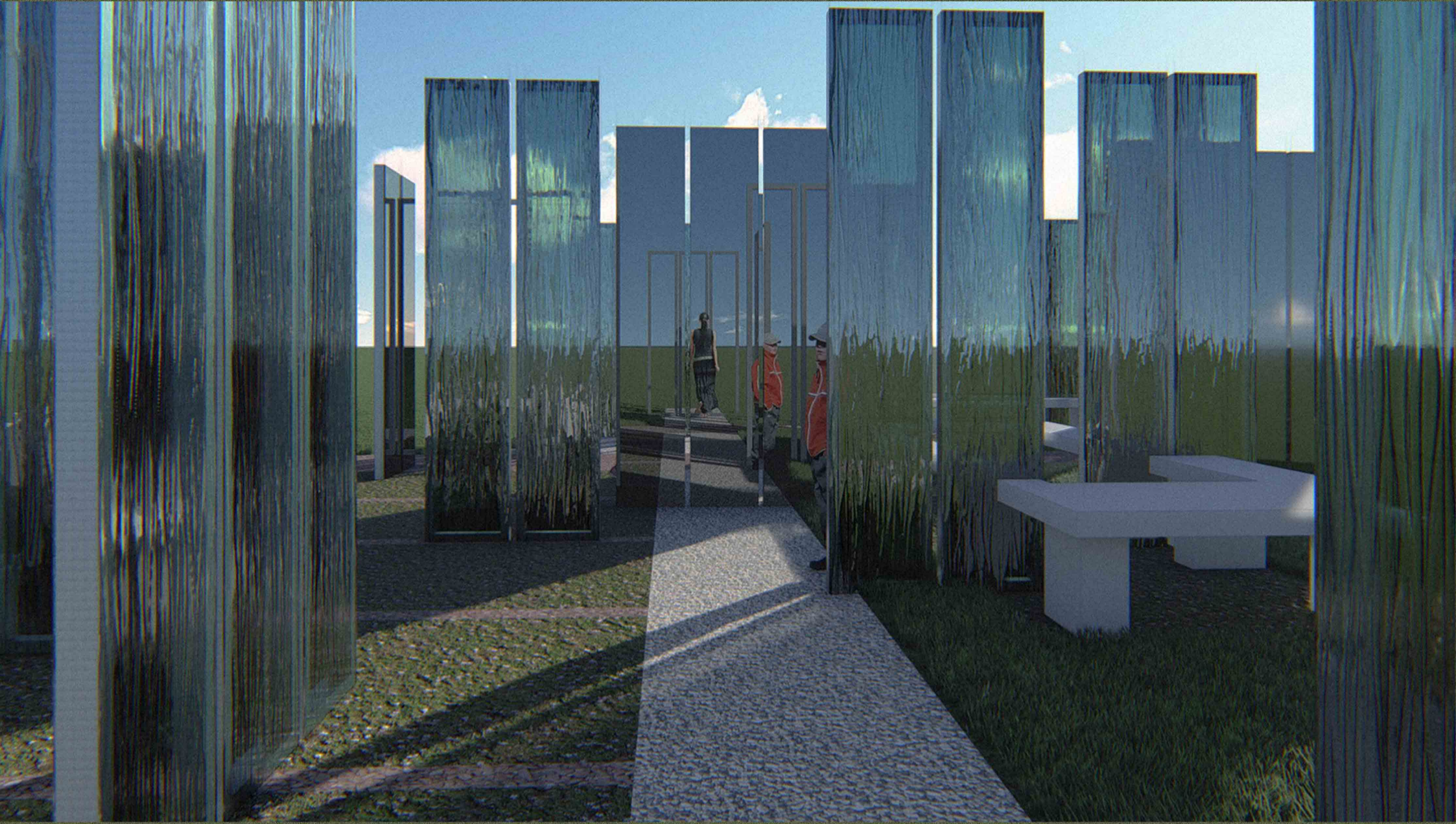
When people enter the venue, they unconsciously think about the relationship between themselves and others. The refraction and reflection of light by different materials form an interesting spatial field. The well-defined path creates a strong sense of order, and the freely assembled installations blur the boundaries and increase the complexity of the site, with free-growing plants further increasing the diversity of the space. I hope to experience a re-examination of self and others in the venue.



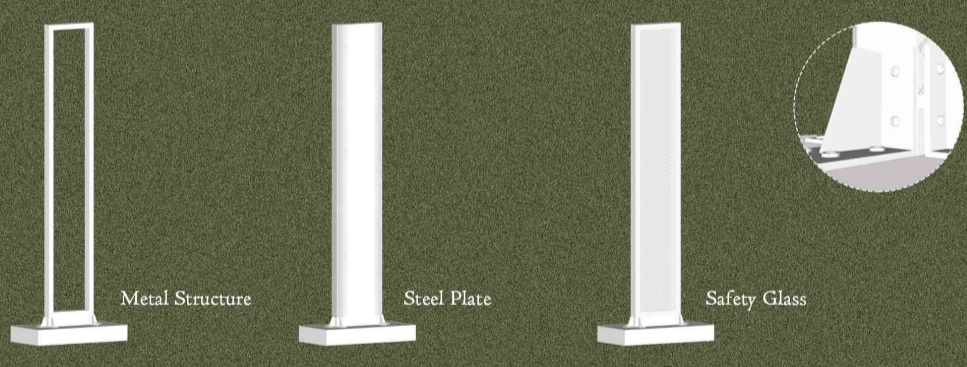
Plan View



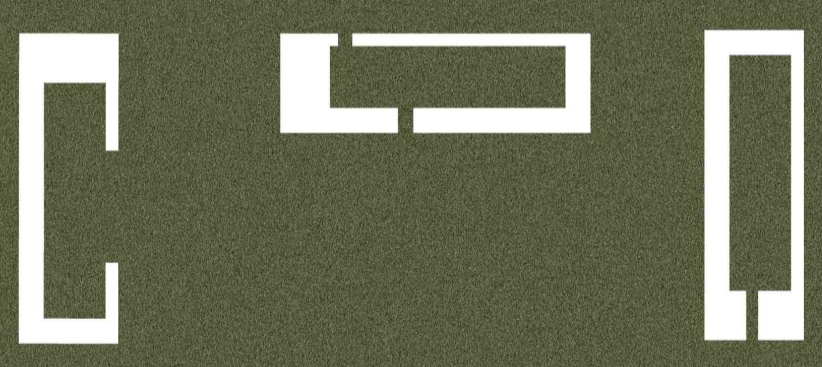
Perspective View



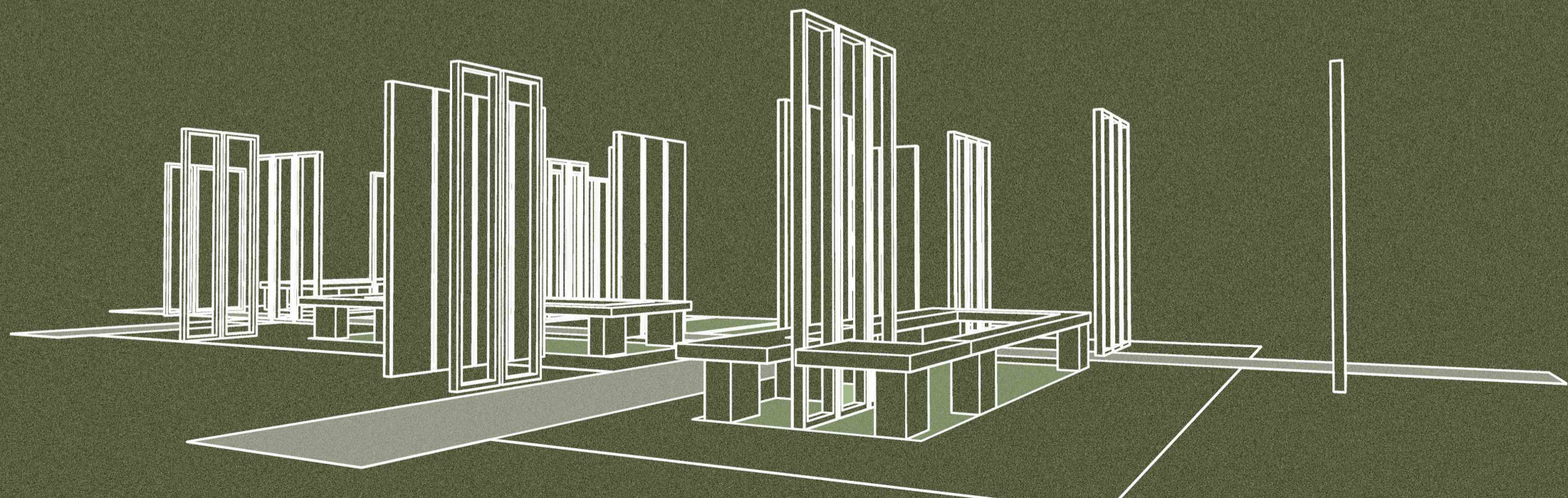
Elevation View



Module Design



Module Seats Design



Sketch View