

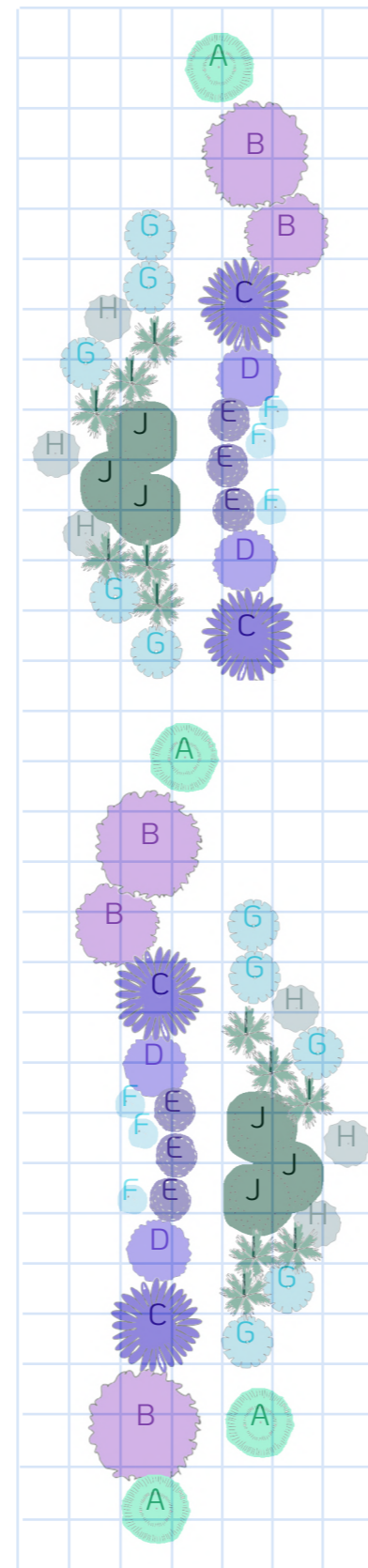
FALLING FENCE

Concept

When a fence falls, its functions of providing defense and isolating an outdoor space—both practically and symbolically—fail. This situation feels out of control and calls for repair. However, a fallen fence introduces new spatial interactions, provoking humans to reconsider the significance of the separation it once enforced. It also invites small animals and shade-loving plants to inhabit the space created by its collapse.

FALLING FENCE is a landscape installation to challenge our understanding of a fence's role. Mimicking the gradual collapse of a traditional fence, it creates an experience where, as visitors walk along either side, they initially encounter the visual isolation typical of an upright barrier. Upon reaching the fallen section, they can see one another—visually closer, yet their physical distance is extended as the fence lies horizontally between them. This shift redefines spatial isolation, transforming it from a vertical divide to a more open, horizontal one, provoking fresh interpretations of the dynamic relationship between separation and shared space. Visitors also observe diverse plants growing at varying light levels along the upright-to-fallen structure, enriching their visual and spatial experience.

EACH SQUARE = 1 FOOT



List of suggested plants

- A- Purple Clematis (*Clematis viticella*)
- B- Russian Sage (*Salvia yangii*)
- C- Cornflower (*Centaurea cyanus*)
- D- English lavender (*Lavandula angustifolia*)
- E- Dwarf morning glory (*Evolvulus*)
- F- Blue star creeper (*Isotoma fluviatilis*)
- G- Siberian bugloss (*Brunnera macrophylla*)
- H- Lamb's-ear (*Stachys byzantina*)
- I- Northern Lady Fern (*Athyrium angustum*)
- J- Moss (*Bryophyta*)

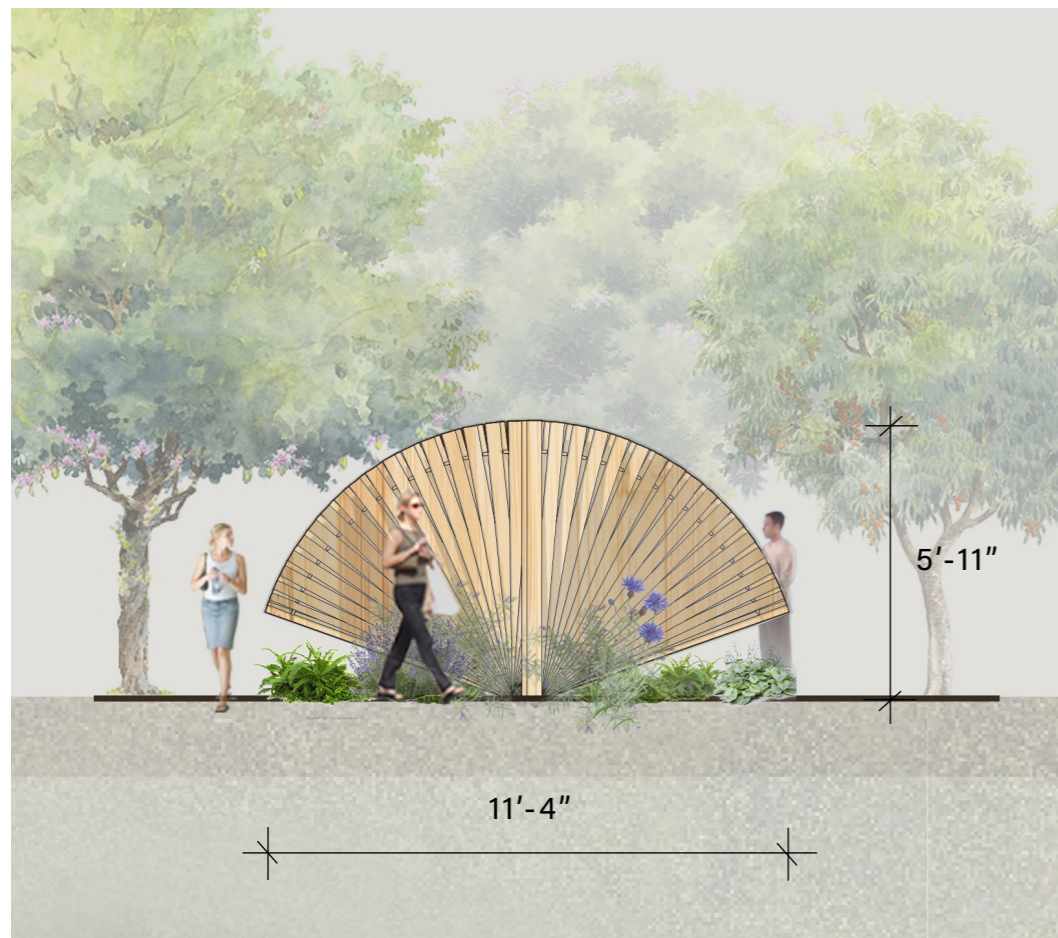
Plan 1:50



Elevation A 1:50



Elevation B 1:50



Sketch

