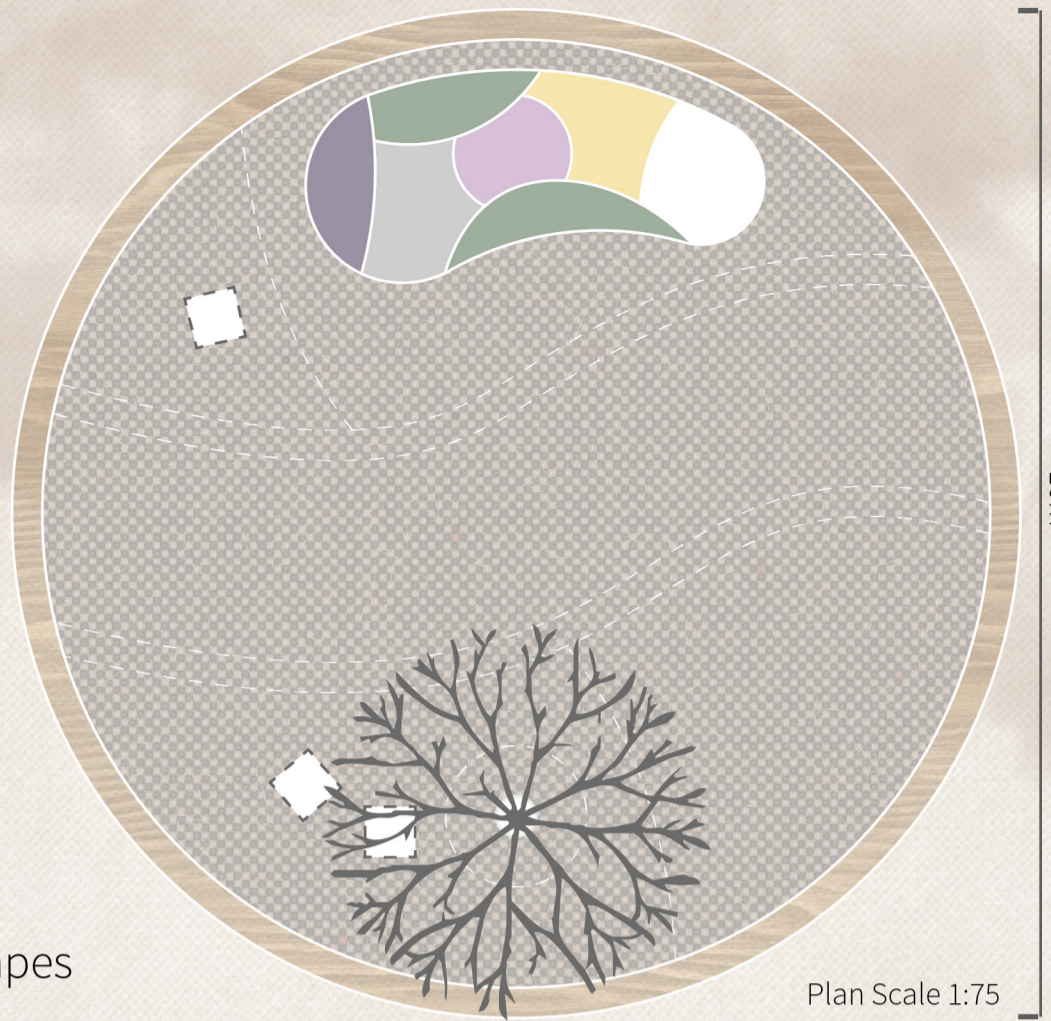




Conceal w/ Burlap

Free Standing Seat



10m

Plan Scale 1:75

Textures

- Artificial Lawn
- Loosen Gravel
- Hard Paving
- Mulch
- Planting Soil
- Soil
- Wood Deck
- Wooden Ramp

Softscapes

- Betula papyrifera*
- Coreopsis tripteris*
- Rhododendron groenlandicum*
- Cystopteris bulbifera*
- Trillium grandiflorum*
- Nepeta sibirica*
- Verbena Bonariensis*

The planting palette is composed of common species in Canada to recreate an ordinary park setting. The shrub planting area uses Summer flowering species in contrary to the foliage color changes of paper birch in Autumn.

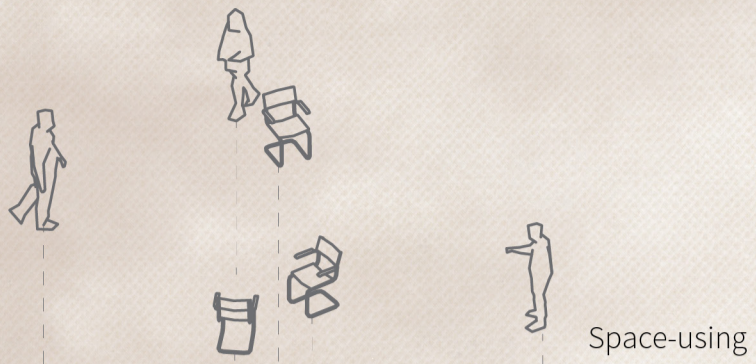
Footloose

Joseph Paxton's Birkenhead Park established a standard of borders - paths and lines of trees and shrubbery of various dimensions slicing through the meadows defining different areas and spots for enjoyment. Setting up boundaries for spacial elements has become a formality evolving with new ideology and materials. In today's practice, border has become a tool for Landscape Architect to orchestrate how occupants utilize the space with their aesthetic value.

However, are the pre-defined borders facilitations or restrictions to users nowadays? The installation *Footloose* debunks the contrary of formality in space-making and the instinct of space-using.

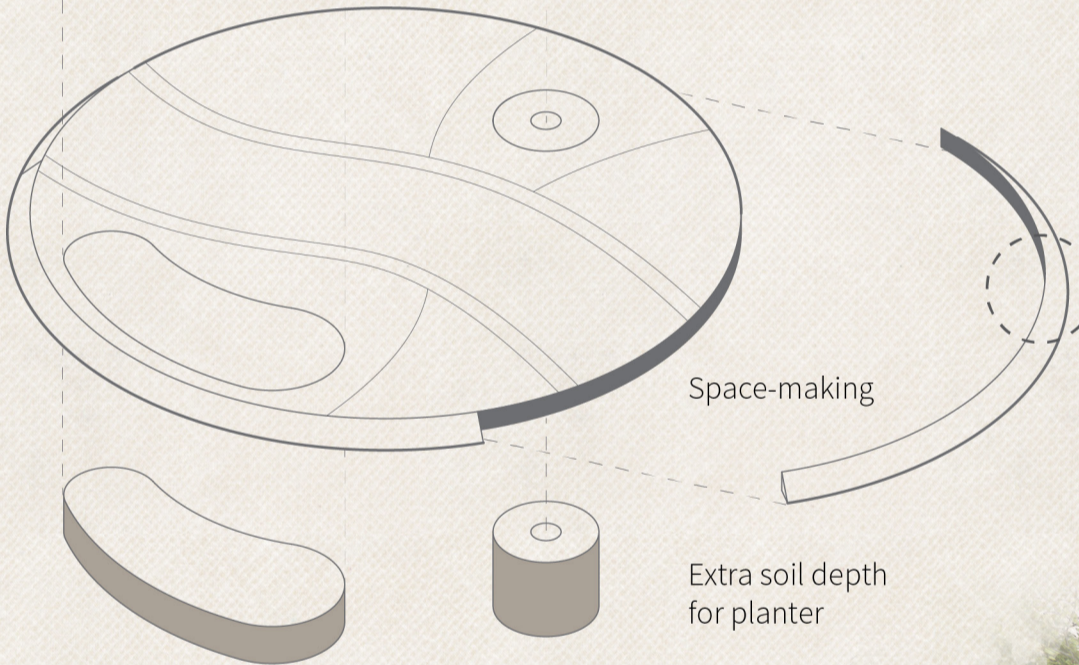
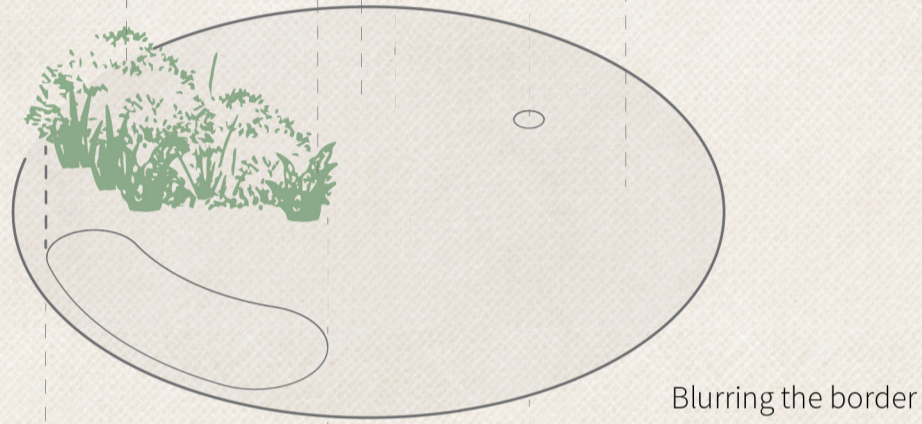
The installation is a circular miniature of an everyday-park concealing the floor elements under a burlap, leaving the softscape as the only visual anchor. The space is open for visitors without preset boundaries, however the formality can be perceived through the quality of materials, sparking the conversation of "right way to use the space".





Materiality

Visitor can subtly perceive the floor quality underneath the burlap, feeling the texture changes of: hard vs soft, loosen vs fixed, sound of walking, etc.



Edge Fixing Detail

