

Scars of Conflict

When we think of the word “borders” today, the word “conflicts” often comes immediately to mind. Worldwide conflicts are on the rise, and the shape of our administrative and psychological borders has become temporary and fluid across our landscapes.

“Scars of Conflict” is inspired by the physical devastation and psychological scars left by warfare. In the First World War, battles between France and Germany left behind remarkable and nearly unrecognizable landscapes due to the intense artillery exchanges. These landscapes reflect how borders—political, geographical, and cultural—can be violently reshaped by conflict, erasing our shared memories.

Today, these landscapes stand as symbols of how society can grow back stronger — a testament to resilience and the emergence of beauty from even the darkest times.

The garden represents an artillery-bombed landscape, where impact craters have become puddle-filled depressions, and excess soil has formed small dunes across the terrain. The landscape has regrown with white-flowering meadows and young trees, symbolizing the renewal of society. The white meadow represents hope, optimism, and peace.

Visitors to the garden will experience a journey through a landscape shaped by resilience and renewal. The garden invites reflection on the impact of conflict and the beauty that can emerge from hardship, offering a peaceful, contemplative space that honors memory while celebrating the strength of recovery.

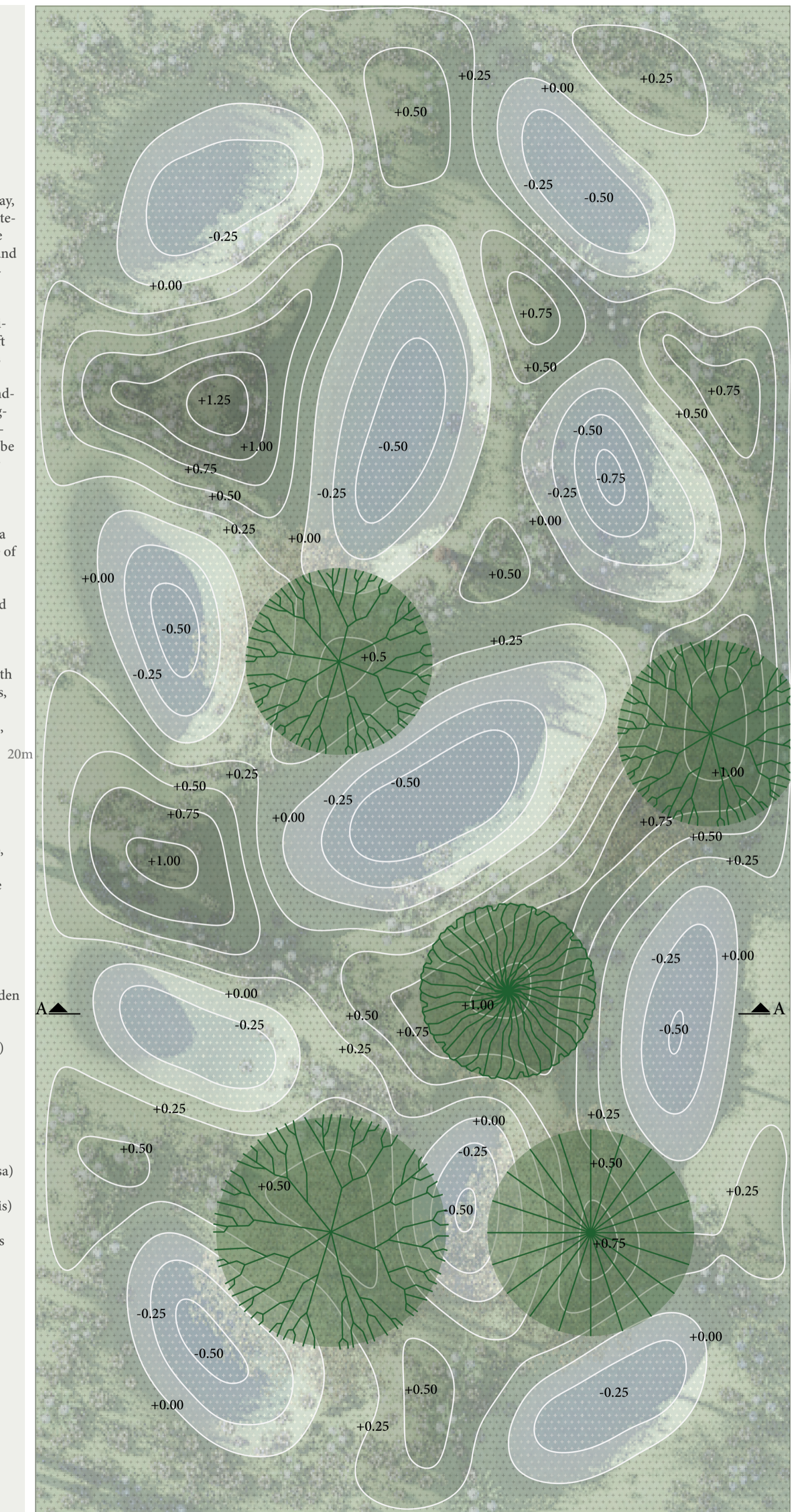
Plantlist:

Five young trees will be placed in the garden consisting of a mix of:

- Trembling Aspen (*Populus tremuloides*)
- Mountain Maple (*Acer spicatum*)
- Paper Birch (*Betula papyrifera*)

A meadow consisting of:

- White Clover (*Trifolium repens*)
- Tufted Hairgrass (*Deschampsia cespitosa*)
- White Avens (*Geum canadense*)
- Canada Anemone (*Anemone canadensis*)
- Northern Bedstraw (*Galium boreale*)
- Three-toothed Cinquefoil (*Sibbaldiopsis tridentata*)
- June Grass (*Koeleria macrantha*)

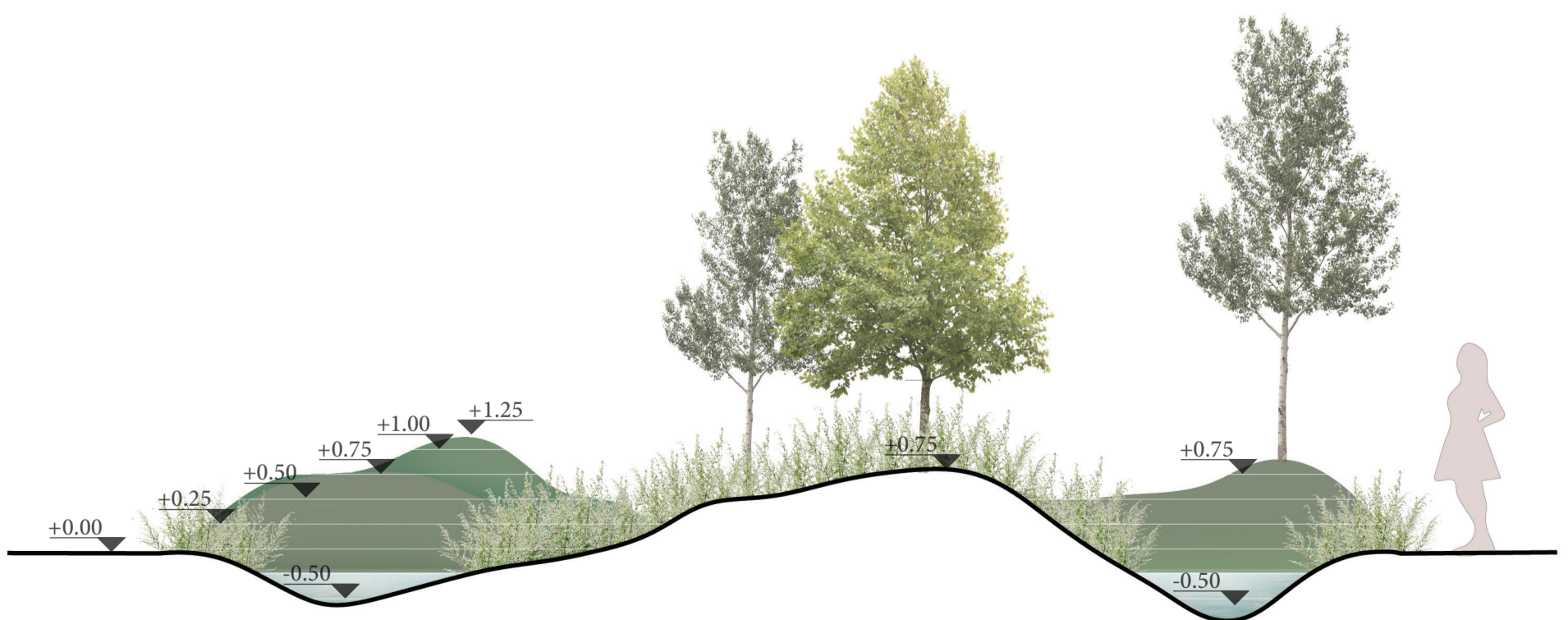


Siteplan 1:50 - Garden “Scars of Conflict”

10m



Collage - Garden "Scars of Conflict"



Section AA - 1:50 - Garden "Scars of Conflict"