

GRASSES

- Sporobolus heterolepis*
- Andropogon gerardii*
- Deschampsia cespitosa*
- Schizachyrium scoparium*
- Sorghastrum nutans*

PERENNIALS

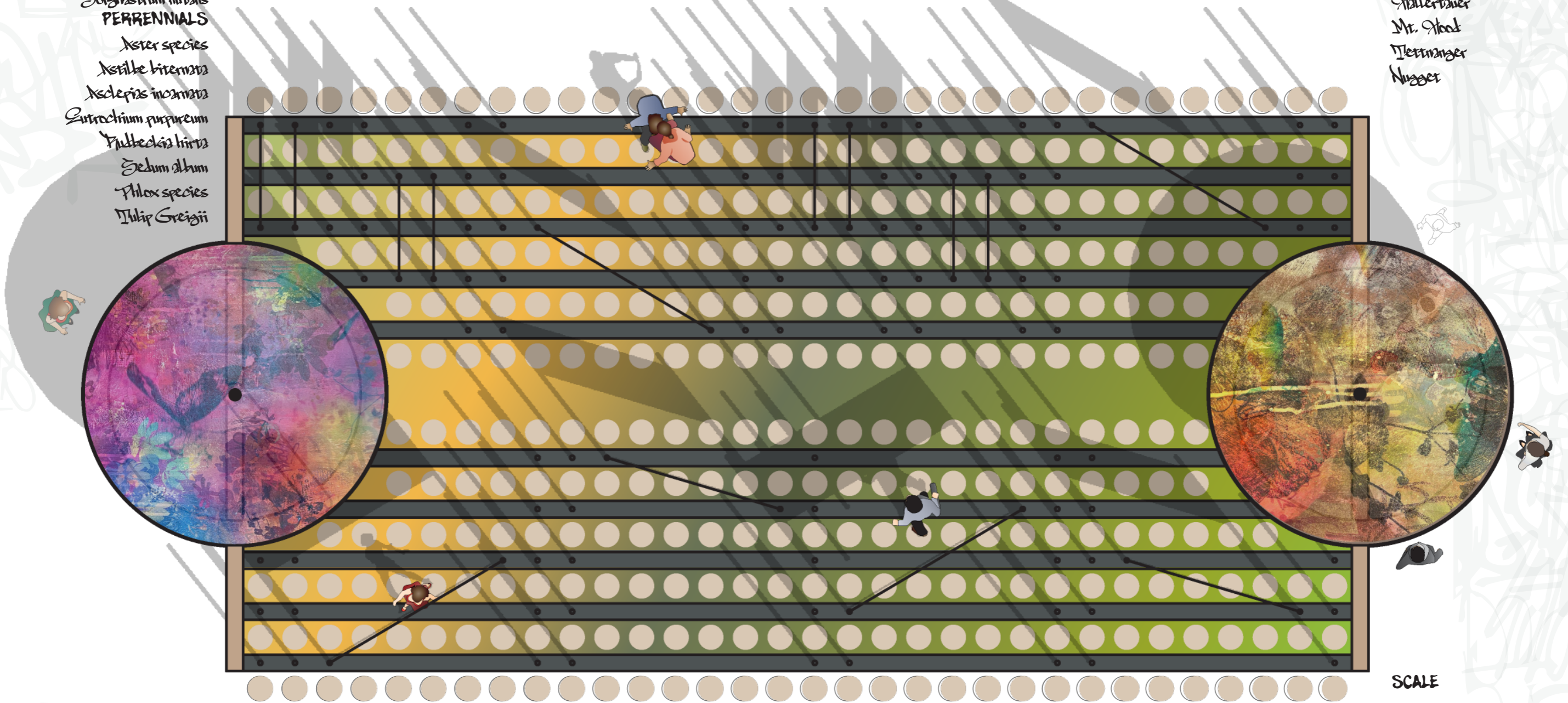
- Aster species
- Astilbe bitemata
- Asclepias incarnata
- Eutrochium purpureum
- Phlox species
- Tulip Greigii

PLANTING DESIGN (LIVING COMPOSITION)

The planting design unfolds gradually, like a musical composition. Climbing plants, such as hops and morning glories, cover mesh screens, creating a living "musical score" over the festival's duration. Low-growing ground covers form a steady "baseline," with grasses and shrubs adding rhythmic texture. Around circular stepping stones, aromatic herbs like thyme and lavender release subtle scents, enhancing the sensory experience as visitors move through the garden.

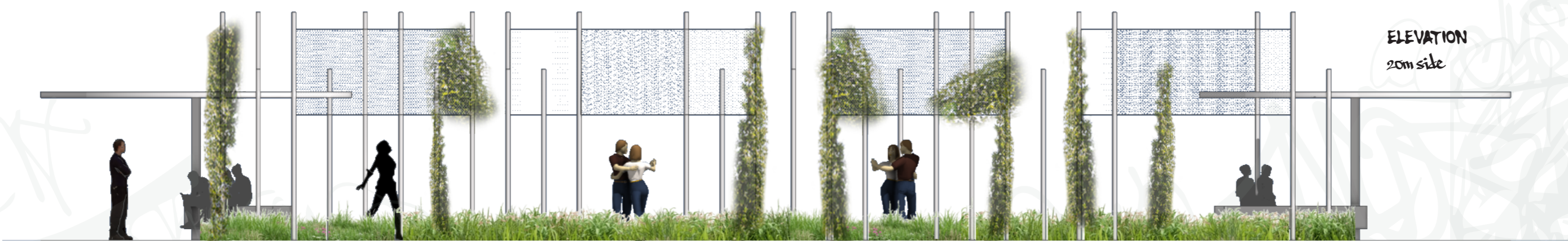
HOPS

- Northern Brewer
- Cascade
- Chinook
- Hallerbauer
- Mr. Hood
- Derwanger
- Nugget

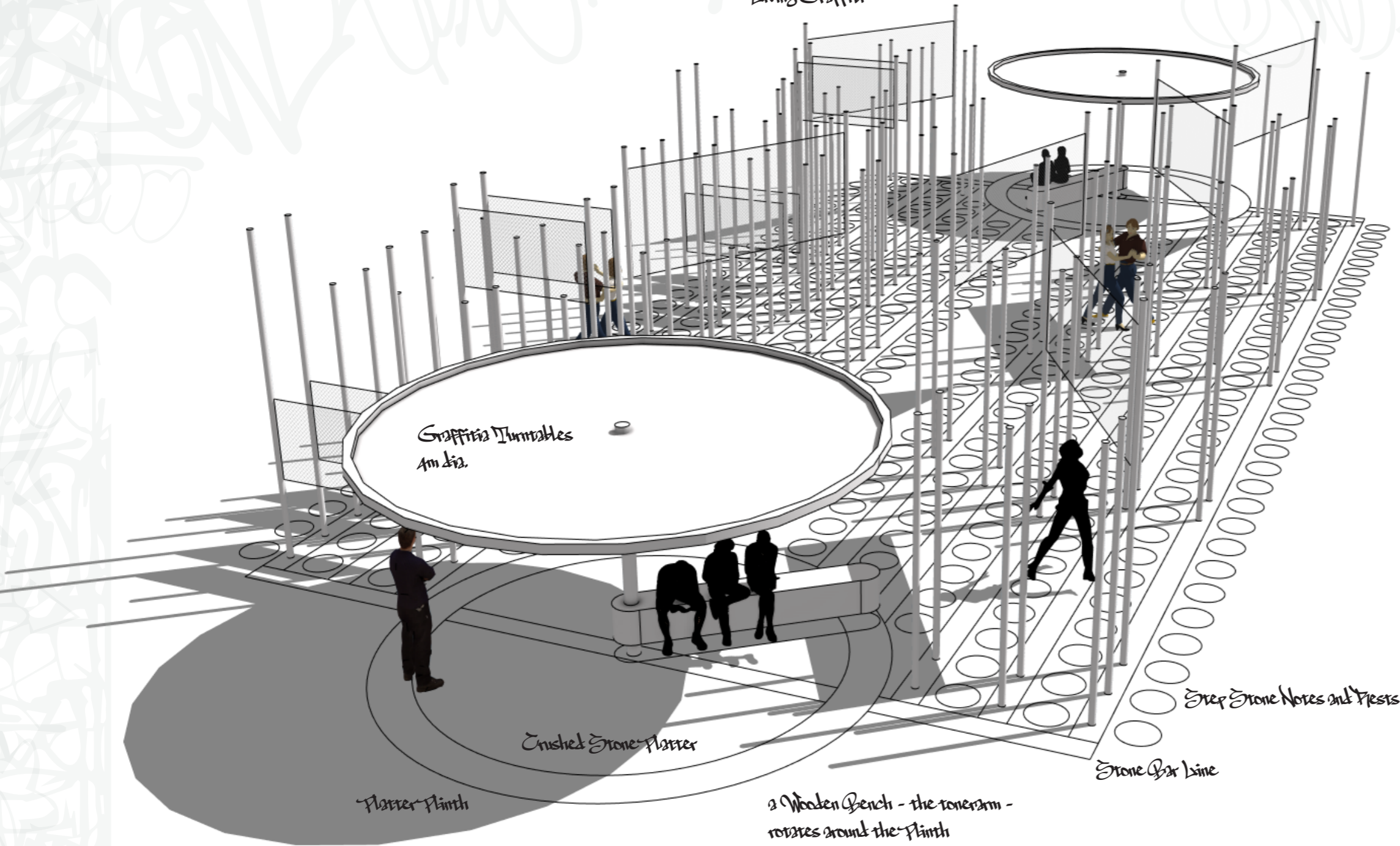


SCALE
1:100

ELEVATION
20m side



Living Graffiti



CROSSFADE: THE RHYTHM OF BOUNDARIES

interprets the essence of hip hop as a dynamic exploration of borders—social, spatial, and personal. This garden redefines boundaries through rhythm, movement, and expression, inviting visitors to interact with the garden as a living musical composition. The space is organized in a linear form, resembling a musical bar with bass and treble clef staves that run across the garden. Along these staves, vertical poles act as notes, supporting mesh screens where climbing plants form "living graffiti," creating an evolving visual score over time.

Visitors move along circular paving stones, or "rests," arranged in rhythmic intervals, guiding playful movement that mirrors musical pauses. These circles also offer places to pause and reflect, inspired by hip hop's communal spirit. As visitors engage with this landscape of rhythm and nature, they become part of the composition, adding steps to the garden's rhythm. Crossfade transforms the garden into a boundary itself—a space bridging nature and culture, inviting exploration and interaction across organic and human-made lines.

VISITOR INTERACTION AND MOVEMENT

The design invites movement and interaction, allowing visitors to become part of the garden's rhythm and melody:
Rhythmic Flow: Visitors create their own paths by choosing where to step among the rests, composing a unique, ever-changing pattern of movement and interaction.
Evolving Engagement: As visitors return throughout the festival, the garden grows, and new vines fill out the notes, creating a continuously evolving, living piece of music.

ELEVATION
10m side



International Garden Festival 2025, 26th Edition
Reford Gardens
CROSSFADE_THE RHYTHM OF BOUNDARIES

—

November 5, 2024

PROJECT TITLE - “CROSSFADE_THE RHYTHM OF BOUNDARIES”

Designer / Primary Contact

Blair Guppy, Landscape Architect ASLA BCSLA
236 17th Street, 3B
Brooklyn, NY 11215
USA

(917) 855 4780
[linkedin.com/in/blairguppy](https://www.linkedin.com/in/blairguppy)
[blairguppy.com](https://www.blairguppy.com)

The Designer

Blair is a Canadian born Landscape Architect living in Brooklyn, New York. With international experience spanning two decades, he supports an interdisciplinary approach to design and remains a committed participant in our profession’s discussion of the public realm. He has contributed to award-winning built works for International firms of distinction including PFS Studio, West 8, Martha Scwhartz Partners, and Thomas Balsley.

Throughout his career, Blair has dedicated himself to deepening technical and professional knowledge beyond the confines of traditional practice to more closely engage the multi-disciplinary realities of our work - including psychological, artistic, and environmental values of placemaking.

I live to fly in the face of what is established and possible, I see the links between design and all that other stuff, and I have a [font](#) named after me.

The Project

Crossfade tackles borders by transforming them into fluid, rhythmic spaces where distinctions blend. The garden’s layered design invites movement and interaction, making boundaries feel porous and dynamic. As visitors engage with musical motifs and living elements, boundaries between nature and culture, inside and outside, dissolve. This experience offers a reimagined view of borders as places of exchange and unity, celebrating diversity and interconnectedness through rhythm and movement.

PROJECT EXPERIENCE



PHILLY FLOWER SHOW

Studio Director / Construction Manager / Builder (with MSP)

Award-winning exhibit at the 2022 PHS flower show, the landscape featured a giant flower made from mushrooms held by a supporting pre-fabricated wood structure. Visitors circumnavigate the flower to learn more about mushrooms and their health benefits.

Blair Guppy responsible for technical design input, project and construction management, overseeing artistic production/development, scheduling, procurement and installation.



GOVERNORS ISLAND PARK, PHASE 1

Senior Landscape Architect / Project Manager (with West 8)

Award winning park and public open space in NY harbour. The first phase created 30 acres of new park and public spaces to the South island and added key visitor amenities to the historic North Island.

Blair Guppy led the design team and consultants from DD phase through project completion, conducting and overseeing all on-site landscape construction. Timely technical input and detailing expertise facilitated re-alignment of budget with design intent.

Blair's experience was pivotal to overseeing all wayfinding/signage fabrication and the more than 4-miles of continuous precast concrete curbing and seat edging.

"Guppy" has become synonymous with the islands new typeface and was so named "Guppy Sans" by Pentagram.



SOUNDSCAPE PARK, MIAMI BEACH, FL

Senior Landscape Architect / Project Manager (with West 8)

This 2-acre Park is the green heart of Frank Gehry's New World Symphony campus and the one of the final pieces in the Miami Beach City Center Redevelopment Plan at the heart of Miami Beach's City Center district. It is a world-class destination for music, design, and culture. It's fabricated pergolas are the parks signature art pieces that provide shade but and support the blooms of bougainvillea vines, highlighting points of entry to the park.

Blair Guppy led the NY office and it's consultant's through fast-tracked design and documentation of this award-winning Park. Overseeing construction on-site weekly, Blair's role was key to ensuring a successful opening of the Park within 1-year of it's design initiation.