

STELLAR PROJECTION

Star navigation dates back thousands of years, with ancient civilizations using celestial points to guide exploration and trade. Polynesian navigators mastered “wayfinding,” memorizing star patterns, ocean swells, and bird migrations. Star navigation remained an essential skill set for travel until the development of modern navigation tools. Not only did star navigation guided explorers across open seas, it also played a crucial role in charting new lands, delineating territorial borders, marking the beginning of national borders based on wayfinding and ‘discovery’.

As landscape architects we often speculate how our borders would change political, social, and ecological prospects if based solely on land features, rivers, mountain ranges, and changes in terrain. Stellar Projection invites visitors to explore these ideas by delving into the ancient skill of star navigation, stepping into the shoes of early explorers who traversed vast, unknown terrains using only celestial bodies for guidance. In this immersive experience, a field of fixed stars is represented, inviting guests to navigate among them. Using a flexible boundary system of belted stanchions, visitors are empowered to define, deploy, or retract borders, creating and adjusting boundaries as they move through the space.



Plant List



Allium 'Globemaster'
Ornamental onion



Symphyotrichum novae-angliae
New England Aster



Boltonia asteroides
False Aster



Artemisia ludoviciana
Prairie Sage



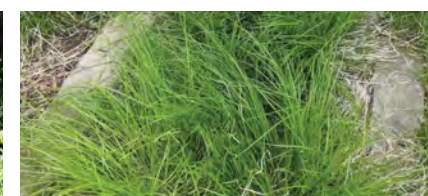
Allium 'Millenium'
Ornamental onion



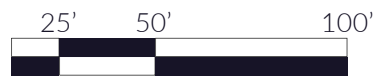
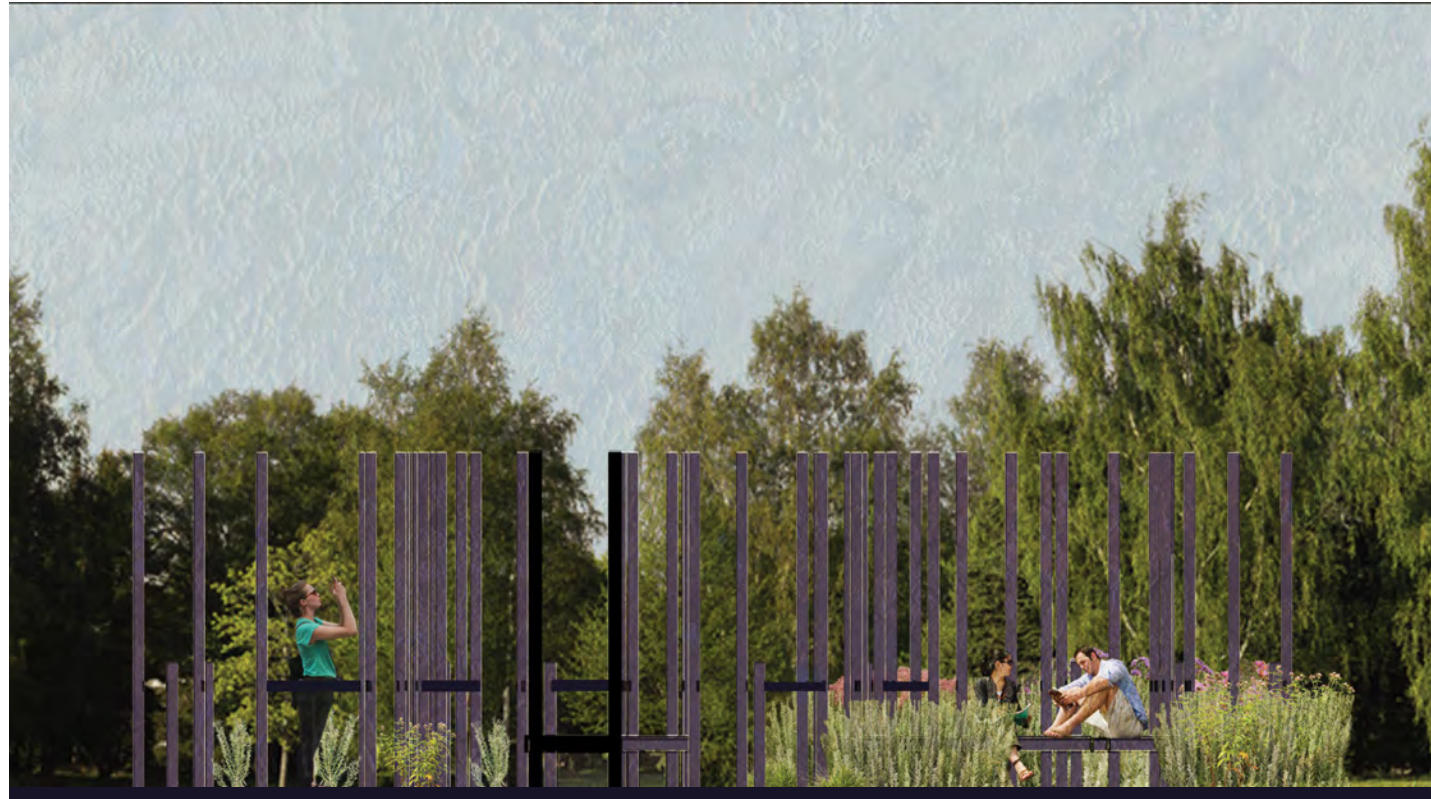
Eutrochium maculatum
Joe Pye Weed



Eupatorium perfoliatum
Boneset



Carex blanda
Wood sedge



Belted Stanchions - Border Creation

