

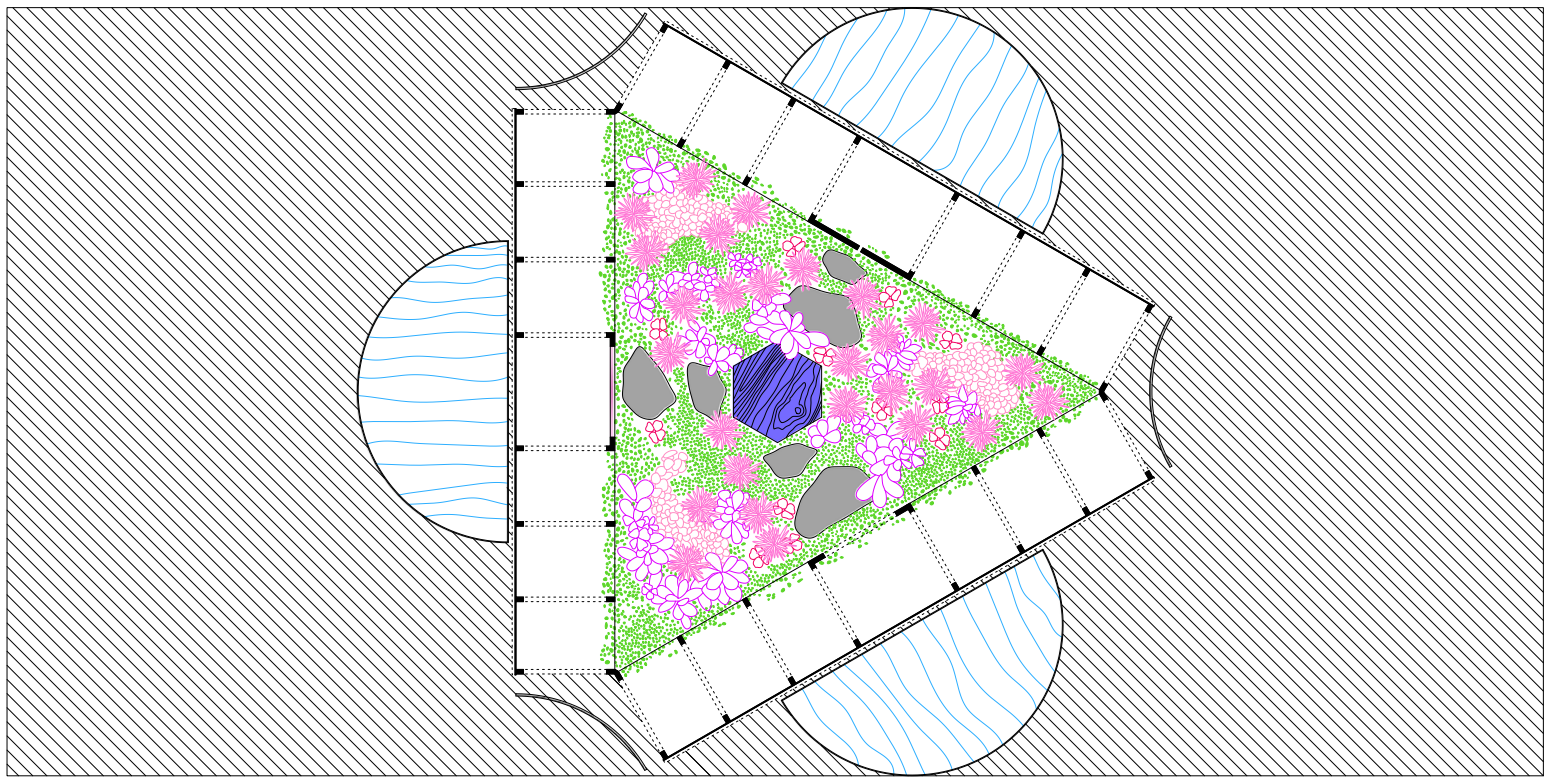
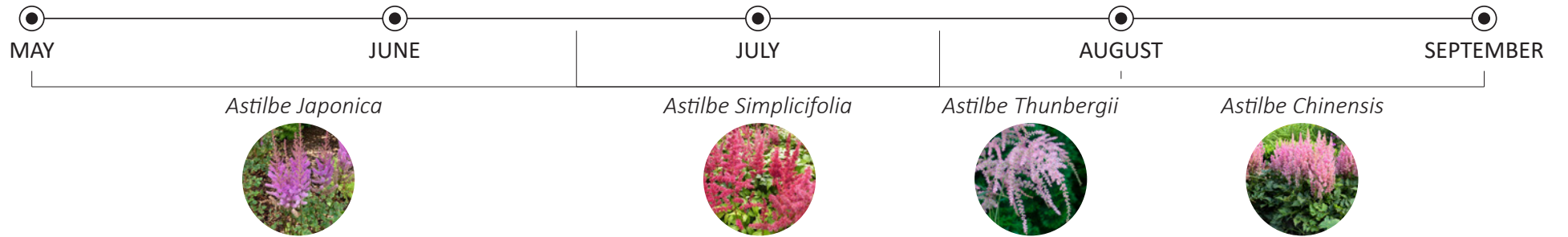
Hortus *In-conclusus*

Hortus In-Conclusus reimagines the medieval notion of the hortus conclusus – an enclosed garden that combines the tranquility of nature with the precision of architecture. This pavilion forms a permeable boundary between an enclosed natural space and its exterior, serving as both a demarcation and an entryway. It invites visitors to cross a threshold, embodying a re-examination of borders.

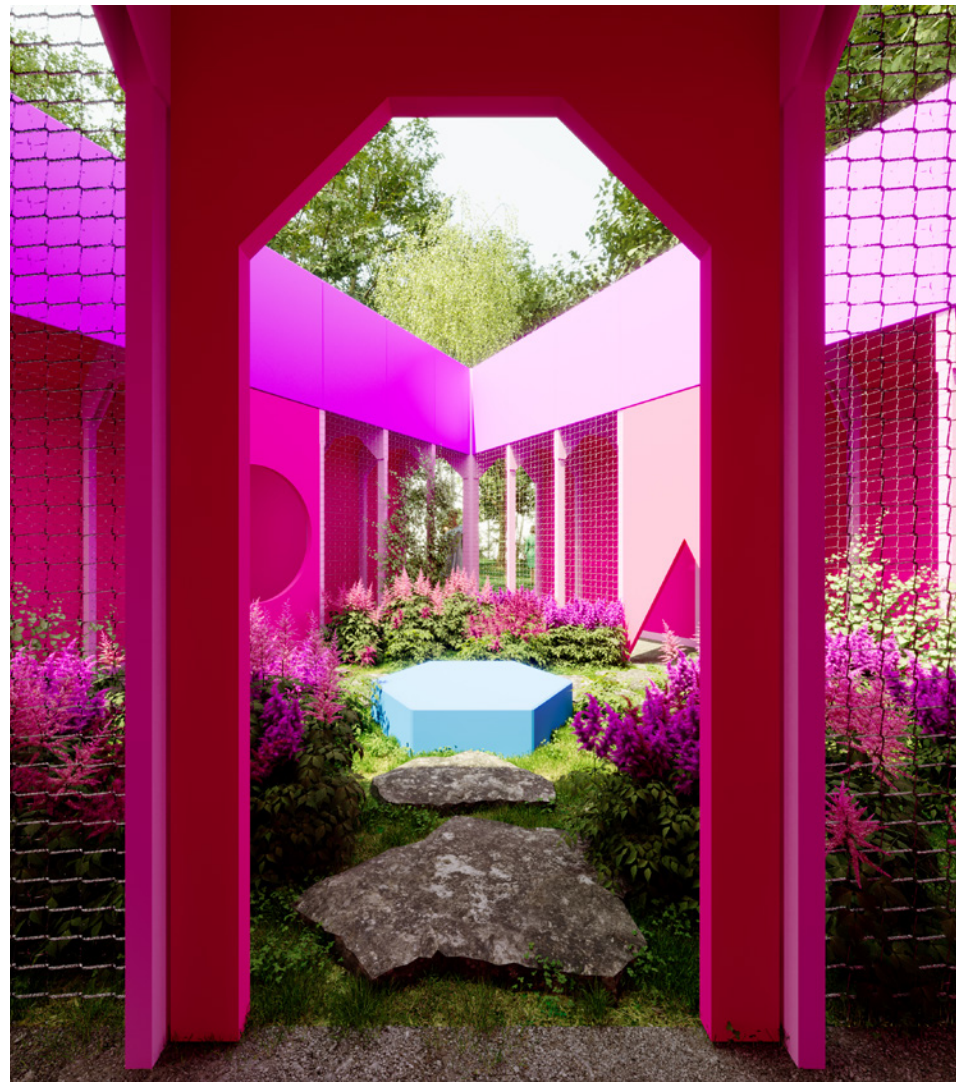
The project's color palette and geometric design evoke baroque illusions, exploring motifs of framing and passage. By delineating a structured space, it mediates between the organic and the con-

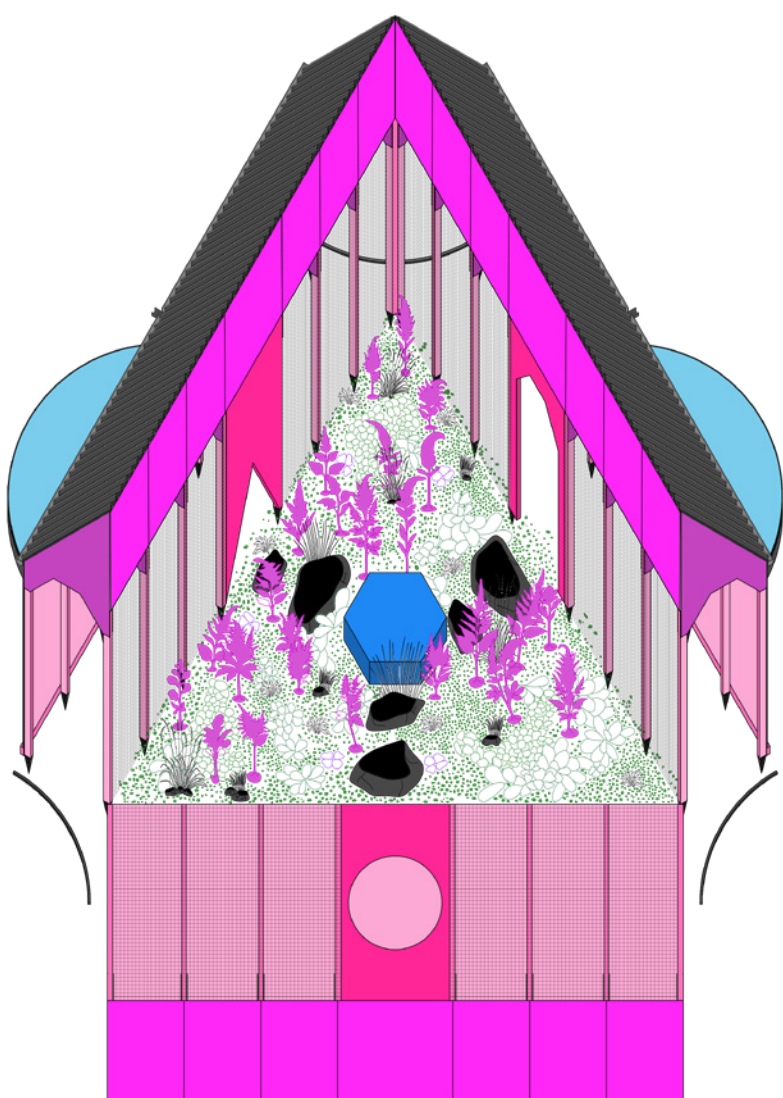
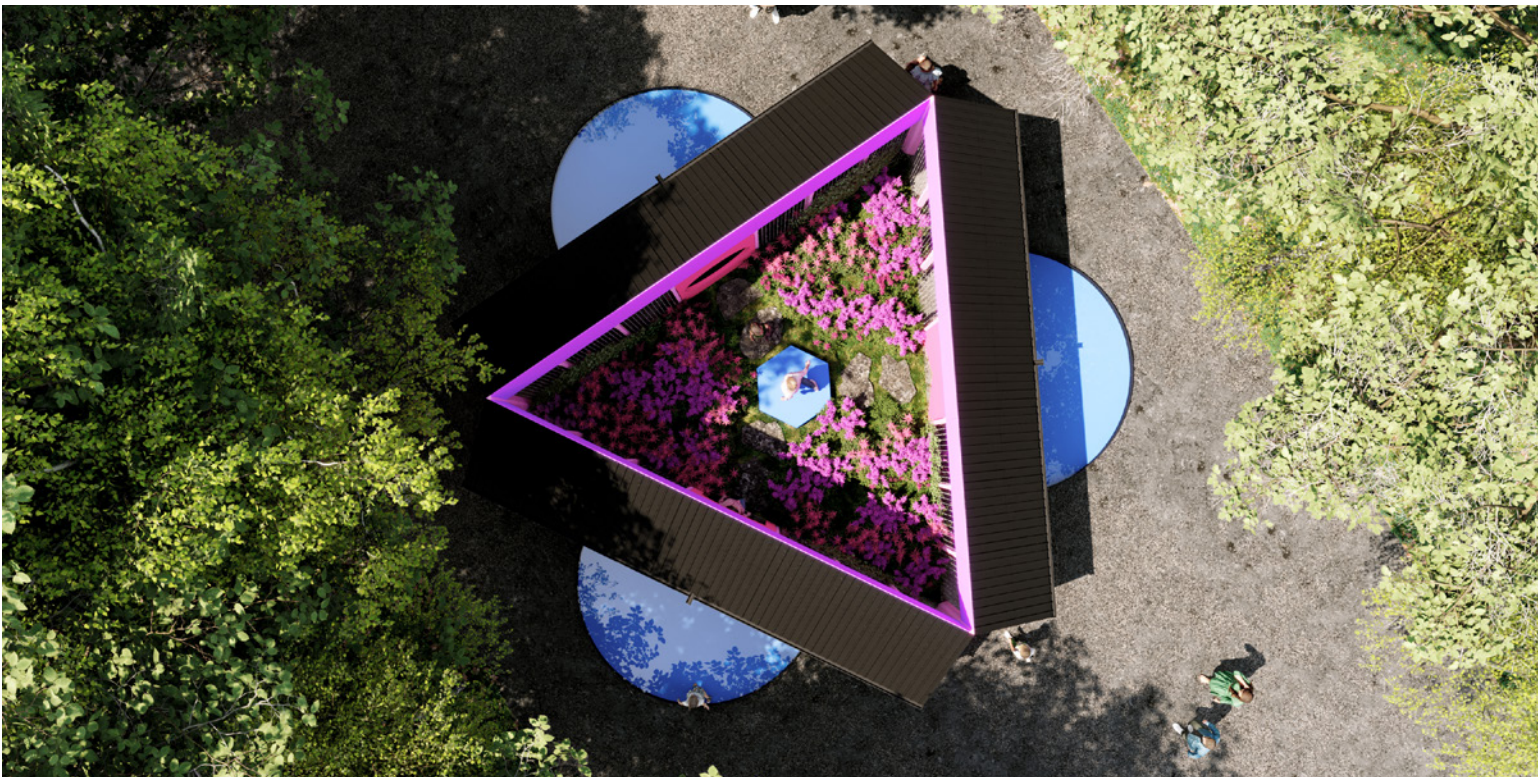
structed. The pavilion's triadic configuration reshapes the boundary between nature, human presence, and architectural form, weaving them into a seamless continuum.

Inside, the defined perimeter contrasts with the lush, flourishing interior—a sanctuary resonant with historical enclosed spaces crafted for reflection and rejuvenation. Visitors stepping into the hortus encounter an experience of interconnectedness, where nature and architecture converge to create a meditative retreat—a space both confined and transcended by its borders.

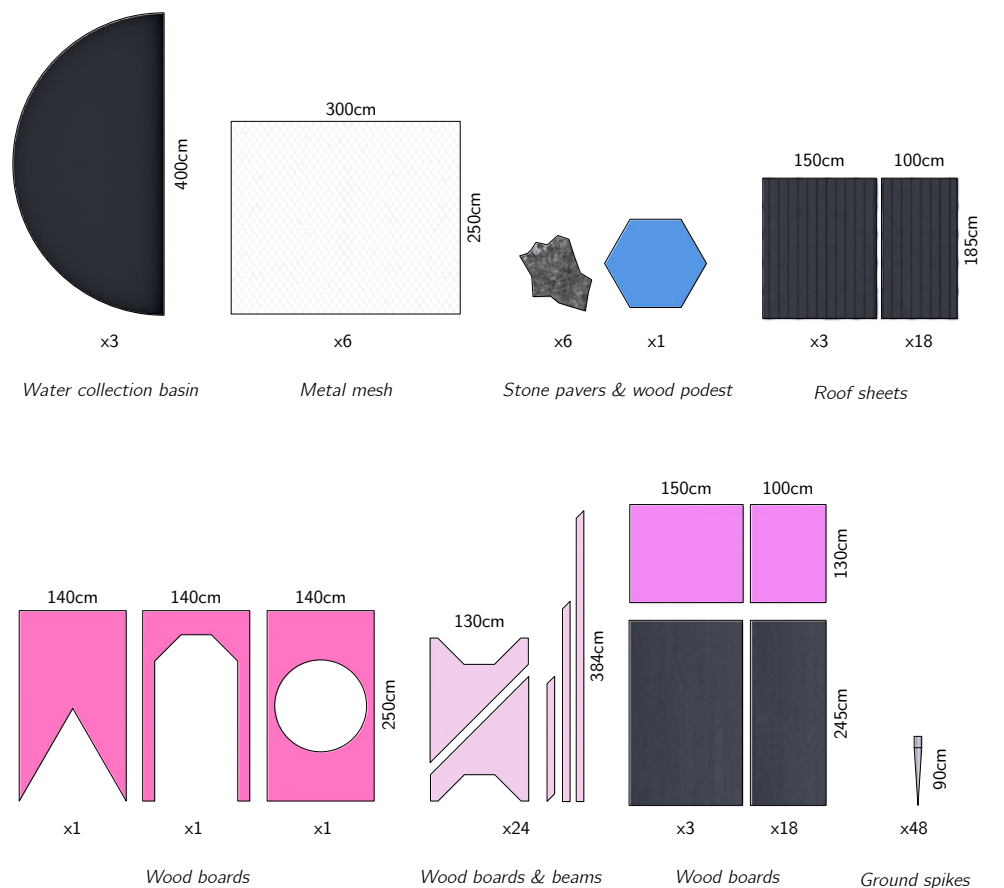


PLAN 1:100
Overview of garden





AXO 1:100
Unfolded axo section



Overview of construction 1:100
Sizes, materials and quantities for all elements