

A futile border

is this a border -

A curtain of metallic chains hung from a rail forms the “border”. The strong material forms a soft veil that separates the linden, maple, and birch trees that inhabit the same terrain.

is this a border -

It wrinkles and folds back in on itself, carving the territory into a labyrinth where users can find moments of respite, reflection, and connection as they encounter strangers on the other side.

is this a border -

The curtain chimes when touched by fauna, humans, and wind, reminding them of its presence.

is this a border -

Despite the resilience of the metal veil, it can be pierced at any given time and juncture, allowing animals to filter through and tree branches to grow past, and humans pull it aside as they cross the boundary.

is this a border -

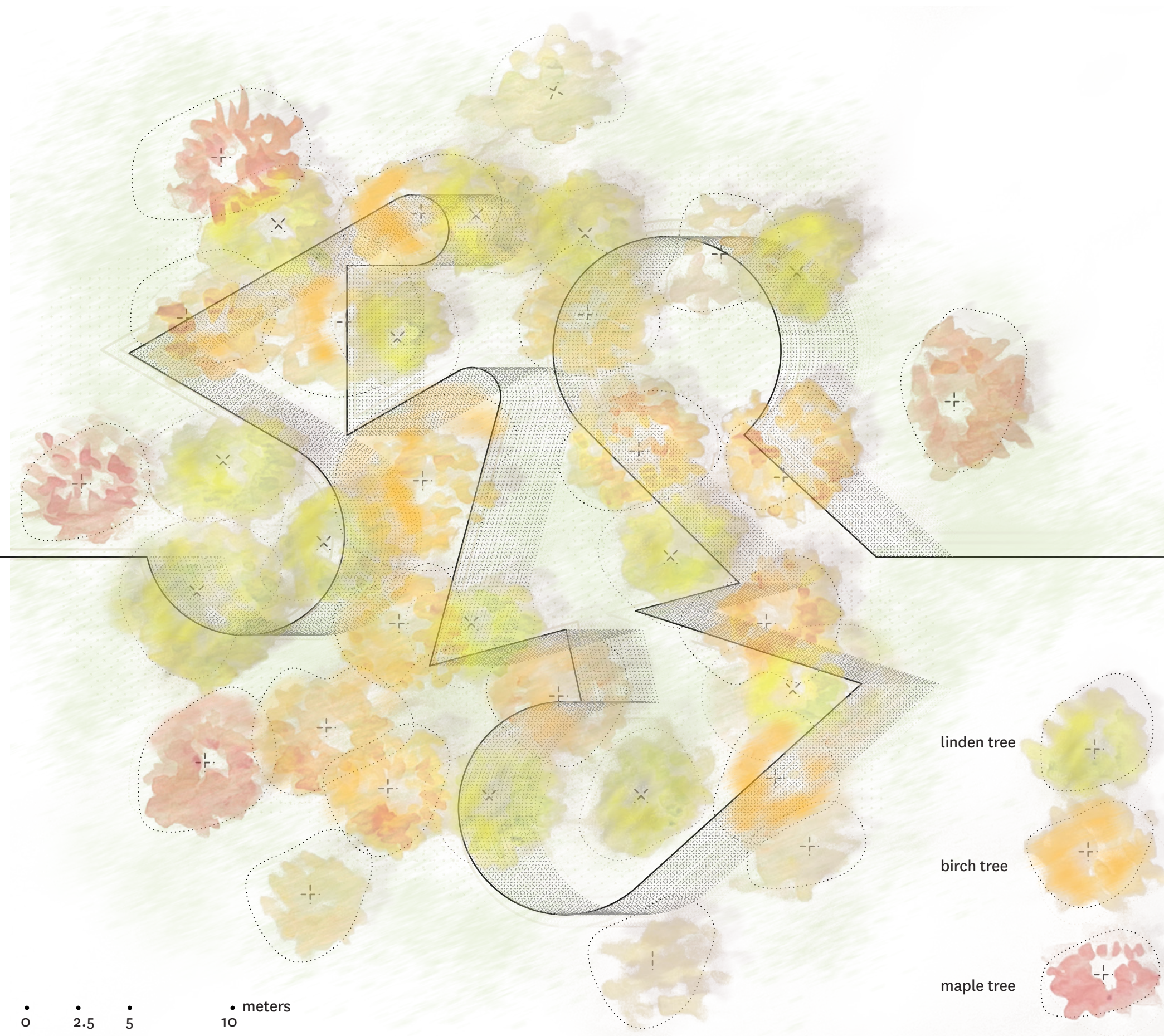
Over time, the seeds and saplings of linden trees might successfully trespass the “border” and vice versa, reclaiming their shared landscape that it has always been. The “border” no longer demarcates the location of the species.

is this a border -

The border is rendered meaningless and surrenders the territory it divides.

This is a futile border.
This is a failed border.
This is a good border.

This is our border.



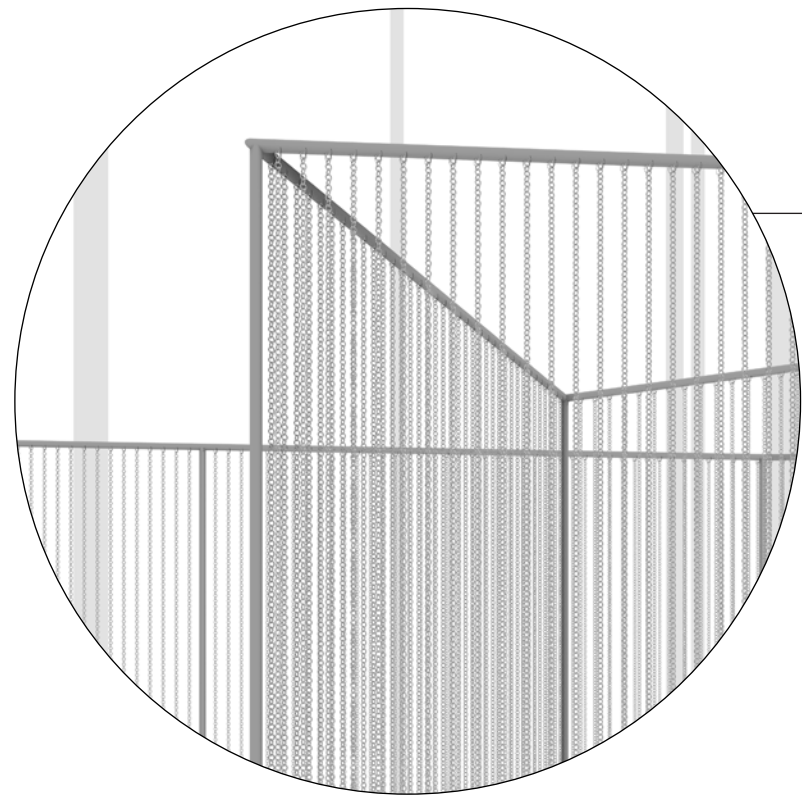
linden tree

birch tree

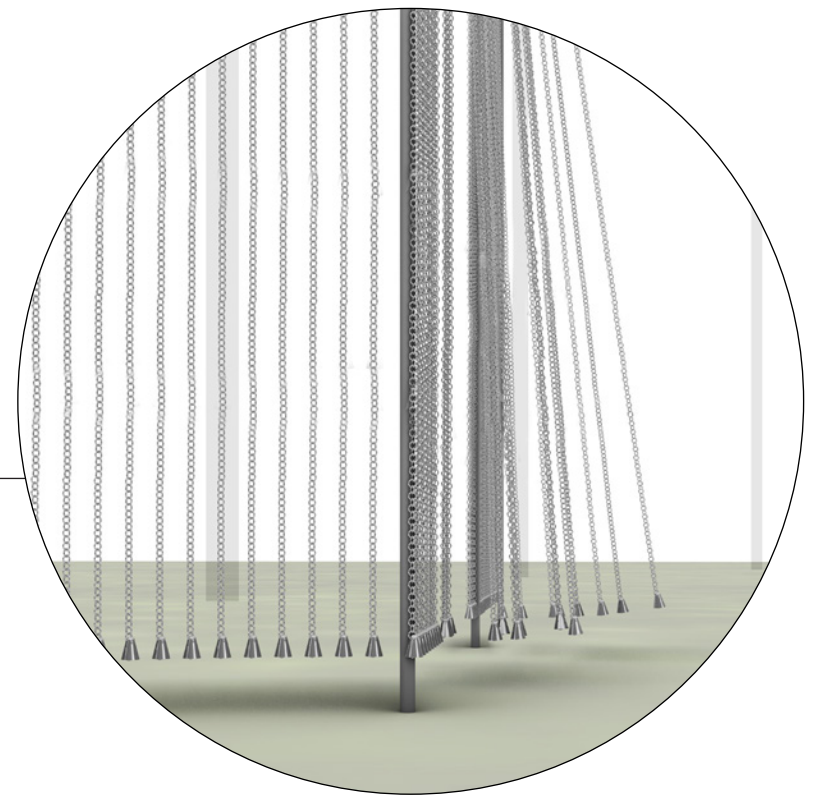
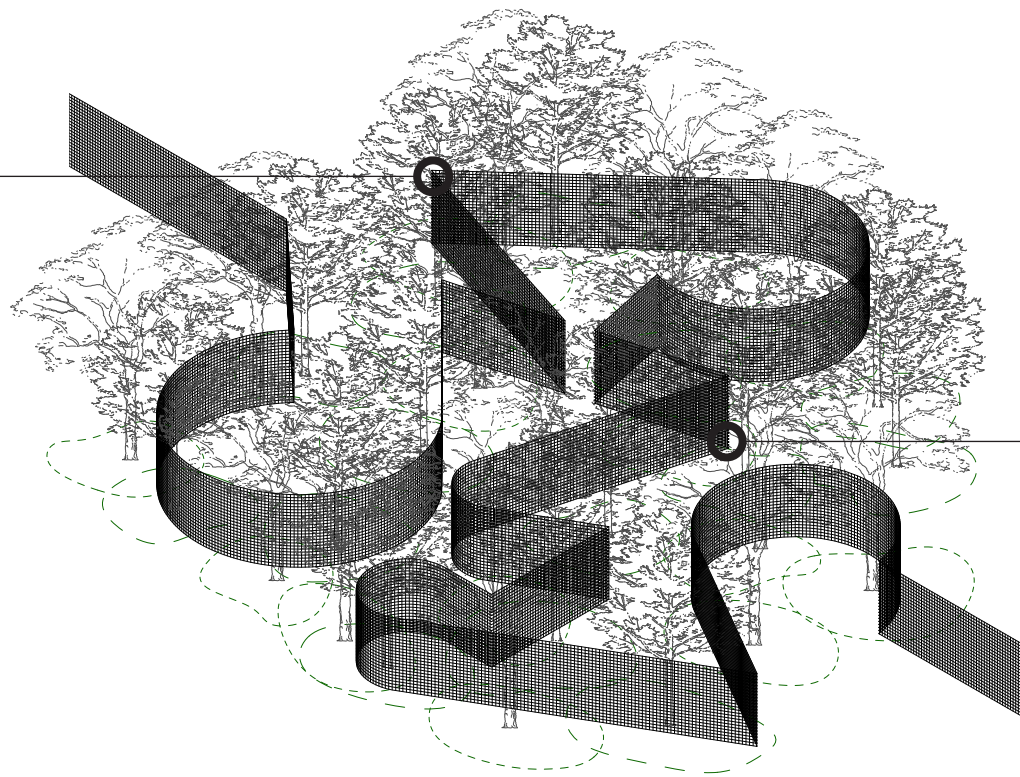
maple tree



0 2.5 5 10 meters



20mm pipes with predrilled holes for chains connected with three way pipe fitting to the post



20mm post anchored 500mm into ground; chains weighted down by bells

