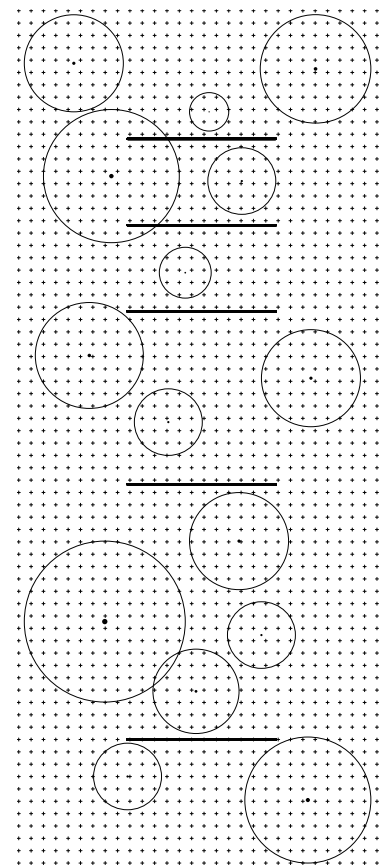


Sfumare

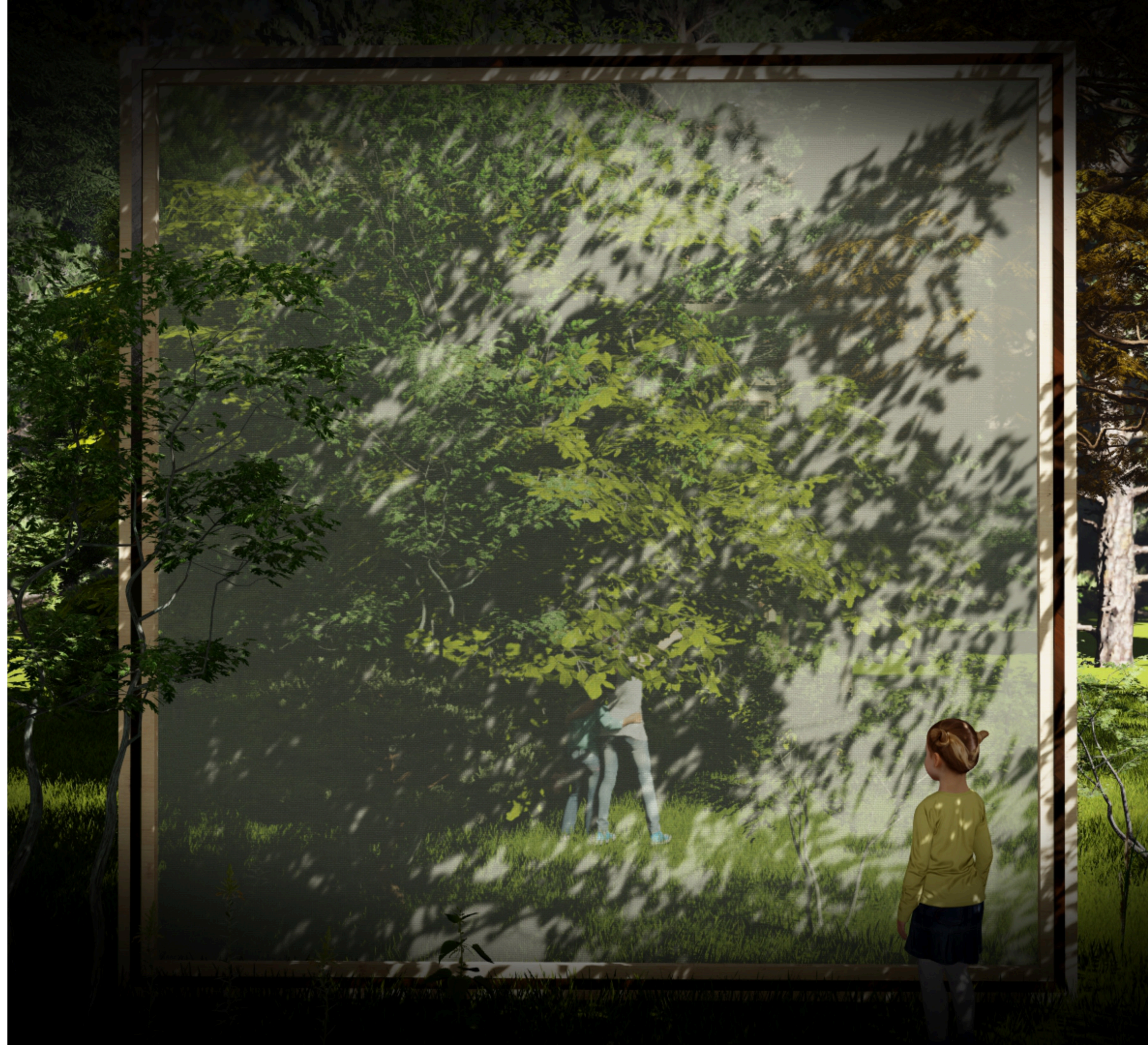
Along with cangiante, chiaroscuro, and unione, sfumato (*sfumare* - to tone down, to blur in Italian) is one of the main painting modes of the Renaissance. Developed by Leonardo da Vinci, the sfumato painting technique is characterized with the absence of lines and borders and with the plenty of transparent paint layers, which create soft transition between the different colors and subjects. The blurry and ambiguous boundaries produce atmospheric effect and convey a sense of mystery.

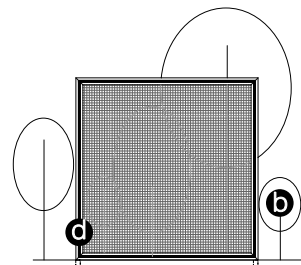
To present the forest in an intriguing way—as well as to create that sense of mystery—the project uses the sfumato layering concept of representing the reality by positioning transparent screens among existing forest plants. With reference to the Renaissance paintings, the scene is presented to visitors as a framed artwork. The hope is that through this work the visitors establish new relationships with the forest and develop lasting connection with the land.



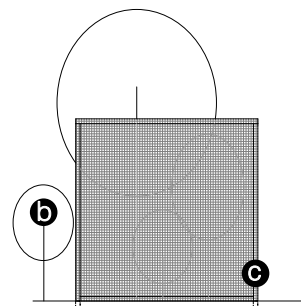
0 1m 10m

plan view

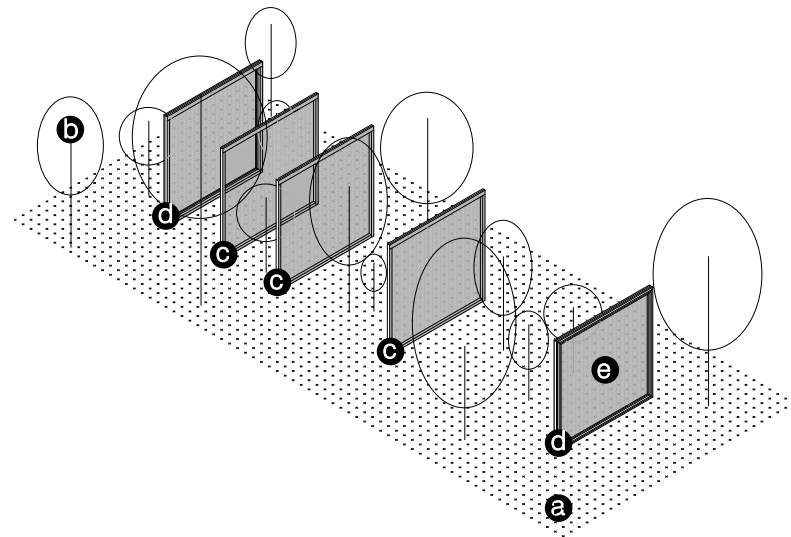




front view end screens,
wood frame type 2



front view middle screens,
wood frame type 1



3d view

- a** existing ground covers
- b** existing shrubs and trees
- c** wood frame type 1
 - painted
 - vertical posts continue in the ground
- d** wood frame type 2
 - painted
 - vertical posts continue in the ground
- e** screen
 - ±3.50m x 3.50m
 - shade cloth/garden netting
 - attached to the frame

