

"Because after all, what is a border if not a story? It is never just a line, a signal, a wall, a margin. First, it's an idea. An idea that is presented as a real thing. It does not exist by itself in the world. It can only be told."<sup>1</sup>'Idée de Frontière' embodies the concept of border as an idea and story, that have shaped nature and communities, leading to unexpected developments. Confined realities often develop in a distorted way, and when they collide without relinquishing their boundaries, conflicts arise.

The garden features three "confined places" that express borders as both tangible and intangible ideas, allowing nature to flow in and out while representing distorted conditions. The internal installations spaces symbolize the consequences of human impact: environmental disasters, debris, soil degradation, and explosions.

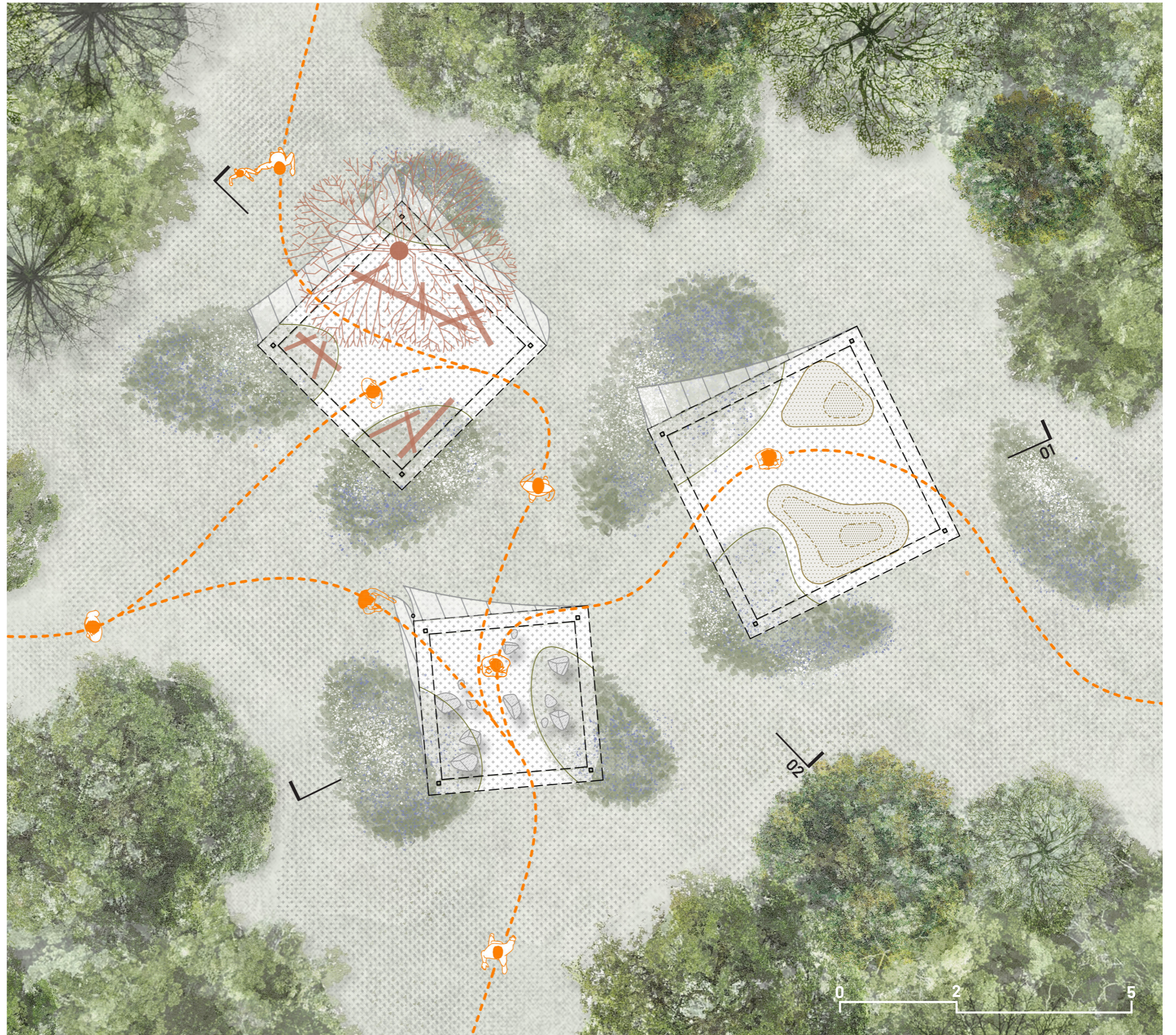
Visitors are invited to traverse these boxes, gaining awareness of the role borders play on Earth. Through this experience, the project seeks to encourage reflection on how borders influence our lives, pushing us to reconsider the stories we tell and the divisions we uphold.

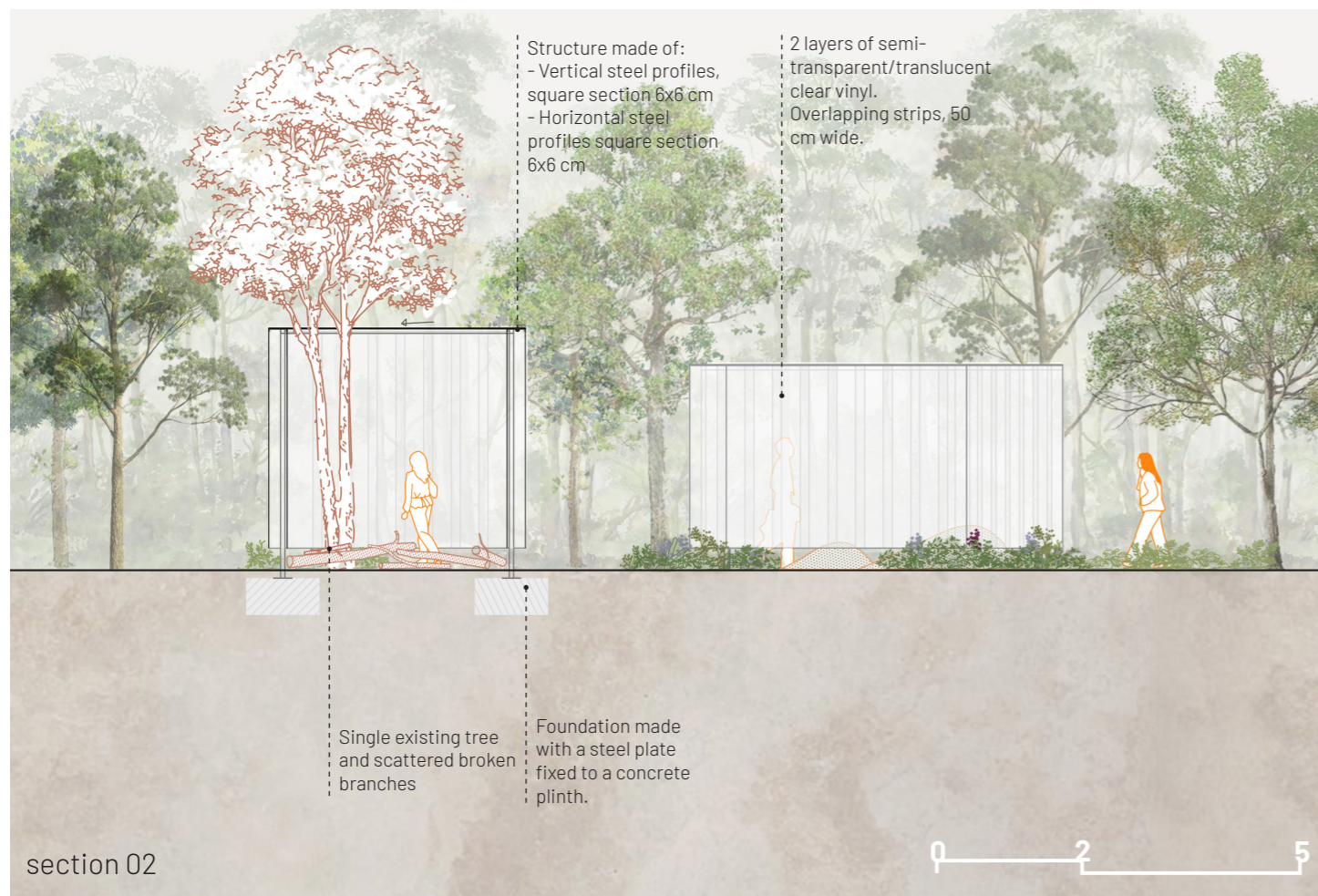
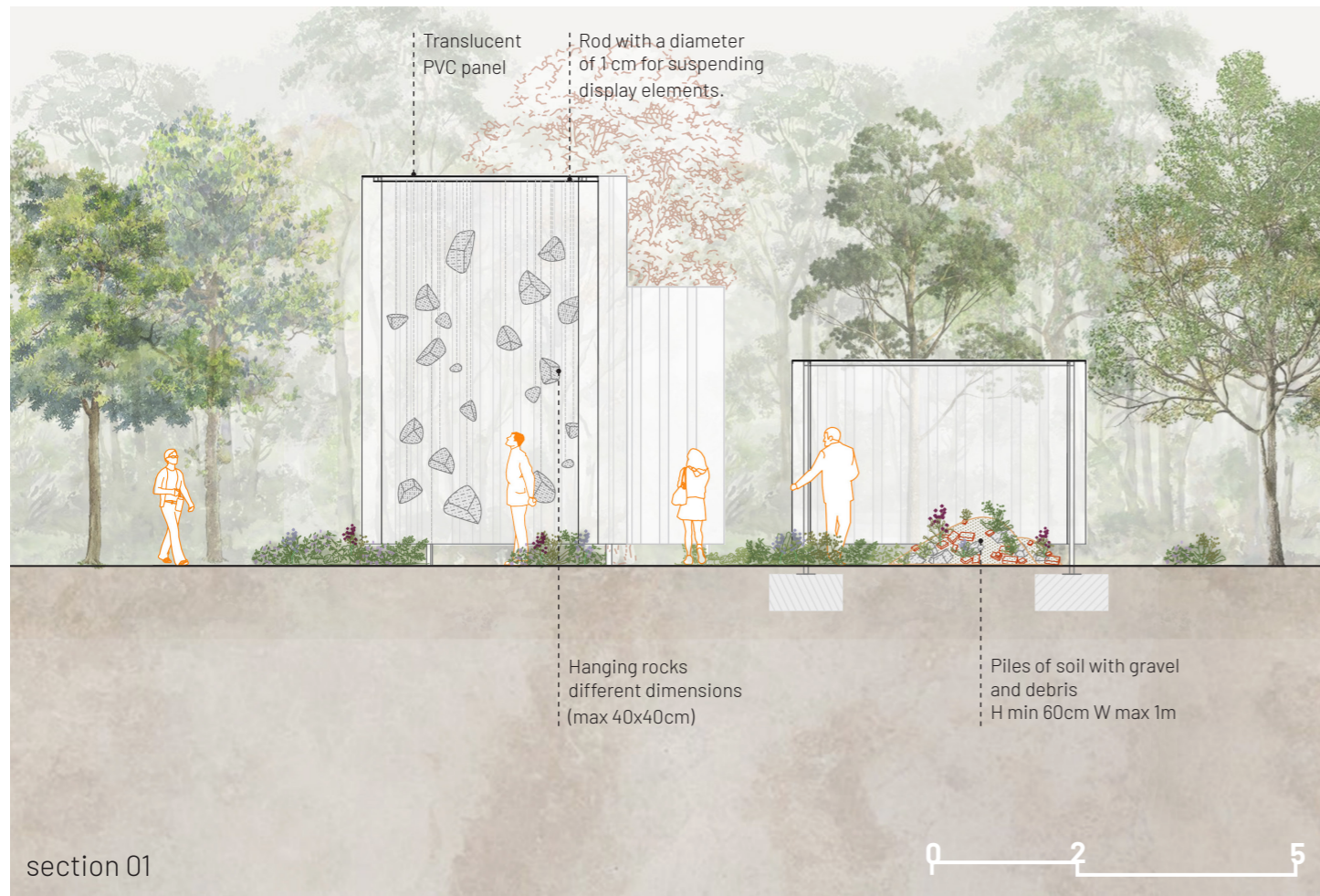
<sup>1</sup>From "Confini dentro e fuori", Ugo Morelli, Doppiozero Magazine

#### SUGGESTED PLANTS\*

- Helleborus niger*
- Heuchera spp.*
- Hosta spp.*
- Brunnera macrophylla*
- Hakonechloa macra*
- Matteuccia struthiopteris*

\* The proposed mix of plants will form all the green clusters, establishing a uniform landscape that serve as a backdrop for the architectural elements.





idée de frontière