



Circles - Spatial Overlap



Datura inoxia



Nephrolepis exaltata



Deschampsia flexuosa



False Indigo



Boston Fern & Holly Fern



Blechnum spicant

Background questions:

In life, the landscapes and vegetation green spaces we see everywhere seem to have divided boundaries and areas. People cannot enter the vegetation space and can only watch it. Even in some dense jungle spaces or parks with many bushes, there may be areas behind the vegetation. There are unknown dangers, such as landslides, animals, etc., that will occupy a fixed area of plan space. (Space is 1+1=1)

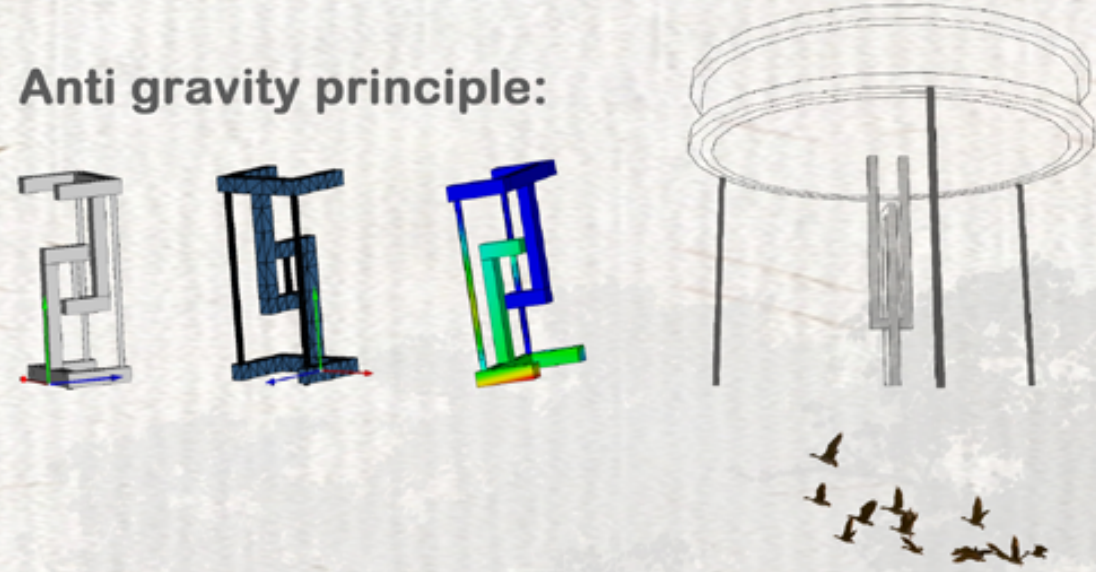
Design changes:

Elevate the vegetation space, change in height, and have no vertical boundaries (the space is 1+1=2). People can walk under the vegetation space and enter the plant space to overlap, interact and communicate, making the space more rationally used. Blurring the boundaries further promotes the relationship between people and plants.

Facility design:

A total of two facilities are used. One is a tree-shaped flower bed facility with flowers and vegetation planted on it. The overall device is supported by a steel structure and lanterns are hung below. The design is inspired by fireflies and functions as lighting and interaction; the other is a small The flower bed adopts the principle of anti-gravity, making the whole thing seem to be floating in the air.

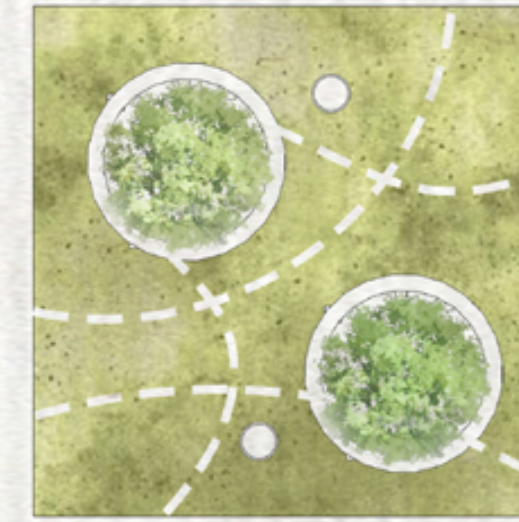
Anti gravity principle:



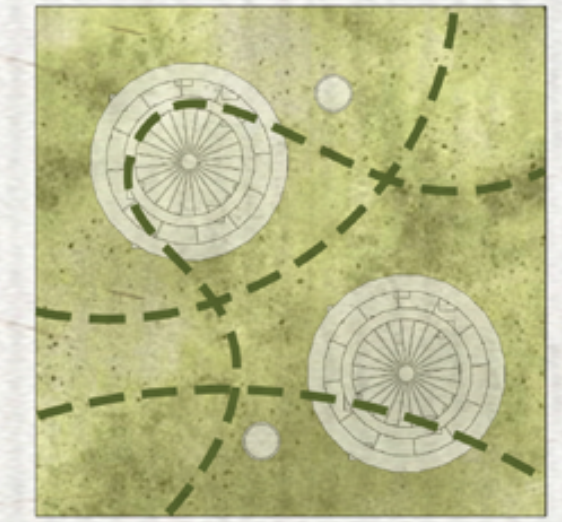
Routines – clear boundaries
Paths and gardens are clearly demarcated.



Routines – clear boundaries
Only for viewing, no entry (Picture 6).



Change – the boundary of fusion
Plants and characters intertwined.



Change – the boundary of fusion
Overlap, interaction, communication (Figure 8).



Conventional – division of space
People cannot enter the plant space.



Conventional – division of space
Plant borders clearly divide the space.



Layering – vertical space
Raise the vegetated space so can enter the vegetated space.



Layering – vertical space
Vertical without boundaries, utilizing vertical space.

