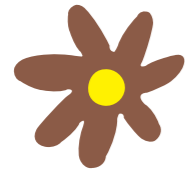


GARDEN: BEYOND THE BORDER



A border divides—marking difference, a silent warning to stay away. Yet, it is also a threshold, a doorway to the unknown, woven with threads of connection and dialogue. **THIS GARDEN EMBRACES ITS DUALITY**, inviting people to feel the border—both present and transcended—where nature flows free, beyond all limits.

Visitors begin their journey along the garden's edge, meeting a dense metal fence—a barrier holding them back, yet drawing their gaze through its screen and gaps. Glimpsing patches of greenery, they imagine a world beyond, captivated by its mystery. But looking down, they realize this isn't new ground; it's a divided piece of the earth they stand on.

A narrow path winds through the garden, seemingly fractured by boundaries. As visitors pass through the gate, nature spills past the fence, breaking through. Touching leaves, breathing in the air, they come to understand that borders are only human constructs, while nature flows seamlessly, connecting them to its vast, boundless whole.

SUGGESTED PLANT LIST

Fraxinus sieboldiana (Flowering Ash)
 Rhododendron mucronulatum (Azalea)
 Papaver rhoeas (Blue Poppy)
 Prunus avium L. (Cherry Tree)
 Syringa x prestoniae (Minuet)
 Taxus canadensis (Canada Yew)
 Tsuga canadensis (Jeddeloh)
 Acer saccharum (Sugar Maple)
 Acer negundo (Negundo Maple)

Cercis canadensis 'Merlot' (Eastern Redbud)
 Malus floribunda Siebold ex Van Houtte (Crabapple)
 Sambucus canadensis L. (American Elderberry)
 Vitis riparia (River Grape)
 Achillea millefolium (Yarrow)
 Dryopteris crassirhizoma (Fern)
 Onoclea sensibilis (Fern)
 Bryophyta (Moss)
 Seasonal Perennial Flowers

* Please note that the proposed plant list may vary depending on local market availability.



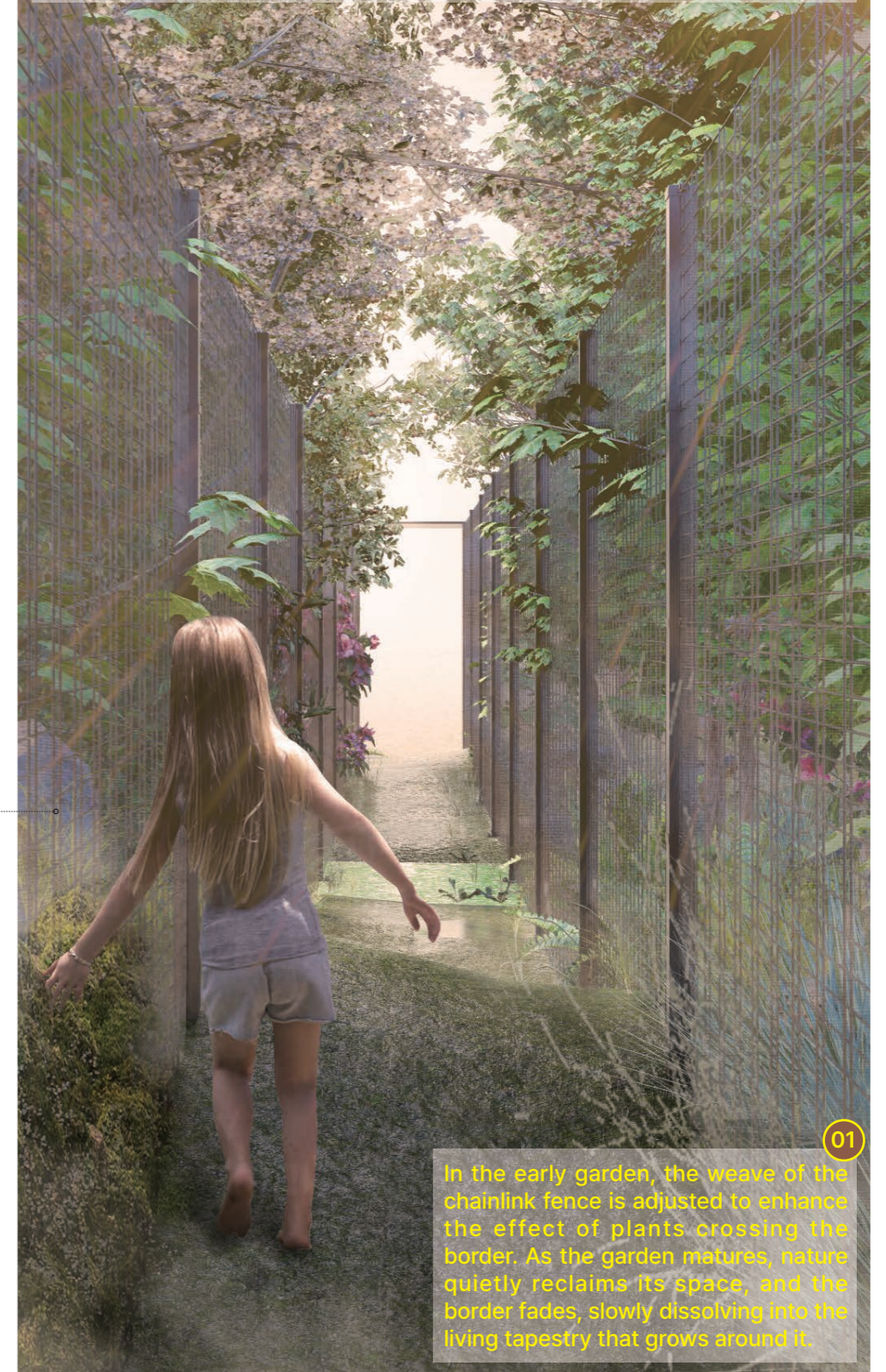
VIEW1

The dense Metal Lath Fence encircling the garden does not reveal it directly but invites the mind to imagine the sanctuary beyond. A powerful curiosity stirs within, compelling one to transcend the physical boundary of the fence and reach toward the hidden world that lies just out of sight.

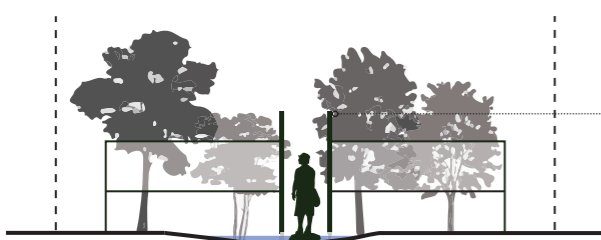


VIEW2

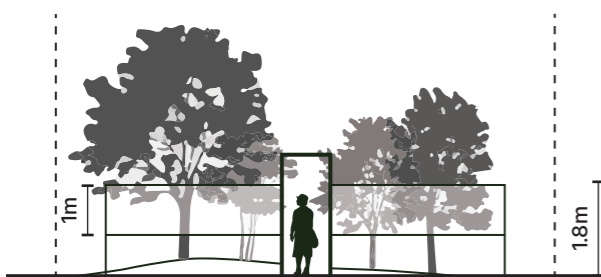
The H2.2m, W1m woven chainlink fence stands as a formidable border, yet it invites touch—a quiet interaction with plants threading through its gaps and moss draping over its edge. Through these subtle encounters, one senses the enduring life force of nature reaching beyond the border, resilient and ever-growing.



ELEVATION A-A'



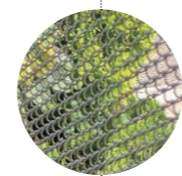
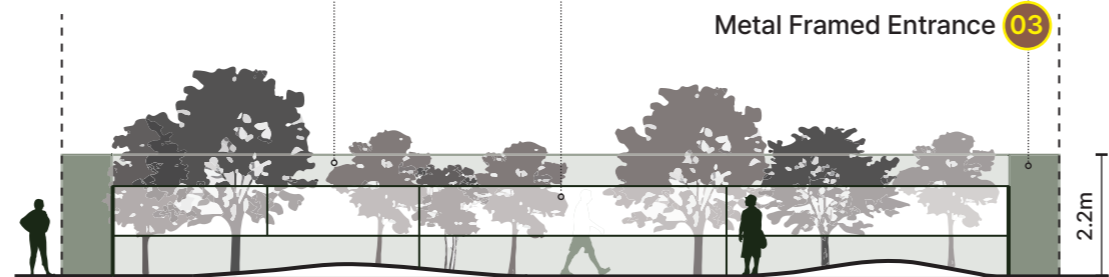
ELEVATION B-B'



01 Chainlink Fence w/ Weave



ELEVATION C-C'



02 Metal Lath Fence



Metal Framed Entrance **03**

In the early garden, the weave of the chainlink fence is adjusted to enhance the effect of plants crossing the border. As the garden matures, nature quietly reclaims its space, and the border fades, slowly dissolving into the living tapestry that grows around it.