

Lookout to a scented garden

The origin of gardens 4000 years ago had the objective of generating recreational spaces and bringing vegetation to the first settlements. Progressively, these were evolving as exclusive spaces for the high society where species from transoceanic regions were exhibited as a show of power. A sign that their dominion knew no borders. This was creating increasingly complex designs where the position of the viewer was gradually becoming more integrated into nature itself. **"Lookout to a scented garden" appears as a performative democratic structure where the intention is to generate the maximum experience of integration.** A common space of experimentation. A folded domestic space.

A folded space (1) of experimentation where the human and the non-human cohabit a space at different heights, generating different domestic situations along the platform, and where the selected plant species (2) themselves generate concrete experiences related to the activity that takes place there. A promenade of fragrant plants experimentation thanks to the change of perspective of a platform that rises, and from where the immensity of the garden itself is observed (3), a lookout, an exhibition space, a series of domestic spaces protected from the sun and experimentation through the senses (4).

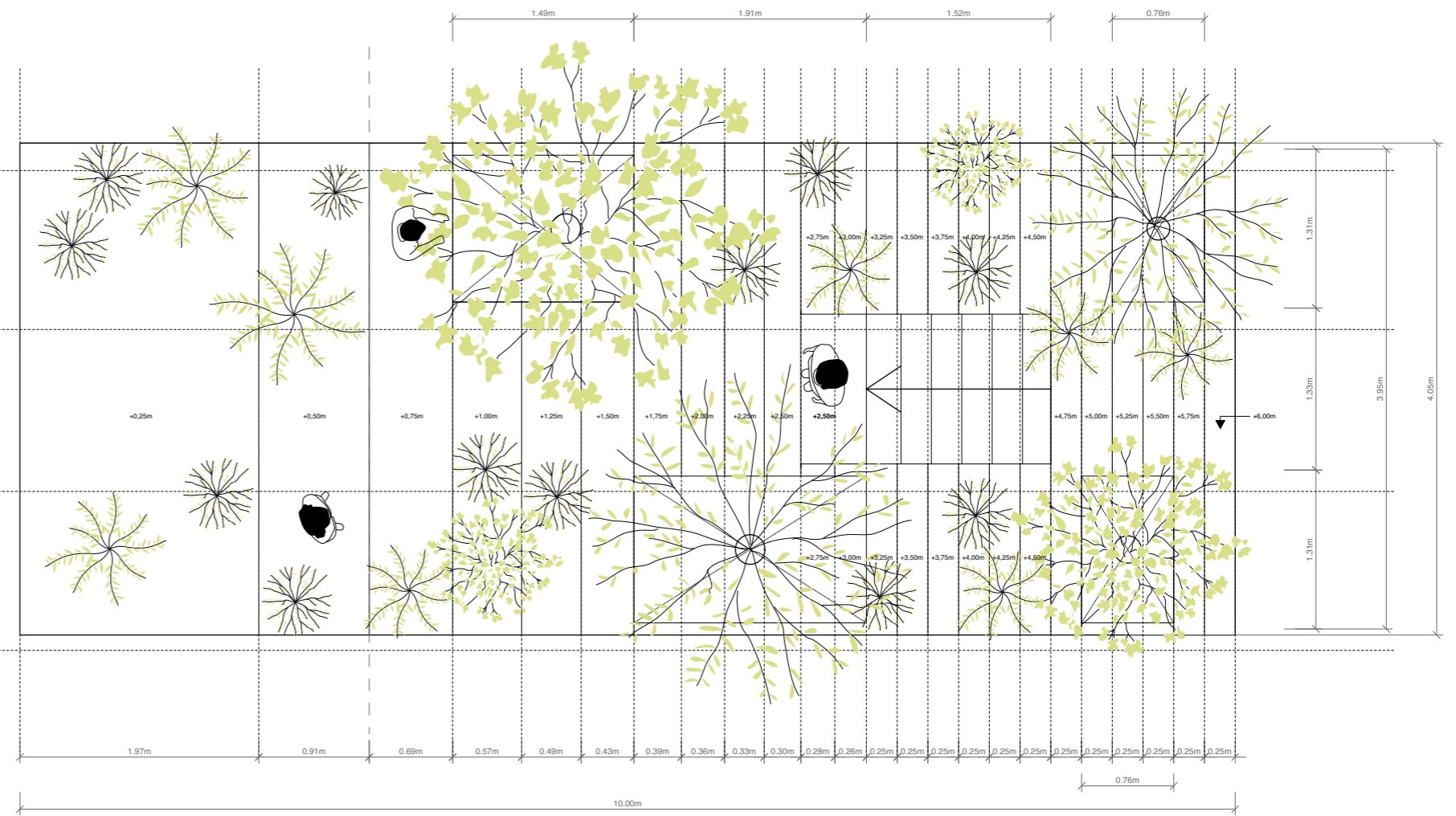
Vegetation Species

FLOOR PLAN - POTTED SCENTED GARDEN

Suggested botanical species: Lavanda, Rosemary, Origanum, Argentus Peggy Sammons, Myrtus, Laurus nobilis, Salvia officinalis, Vitex agnus-castus... (scented mediterranean species).

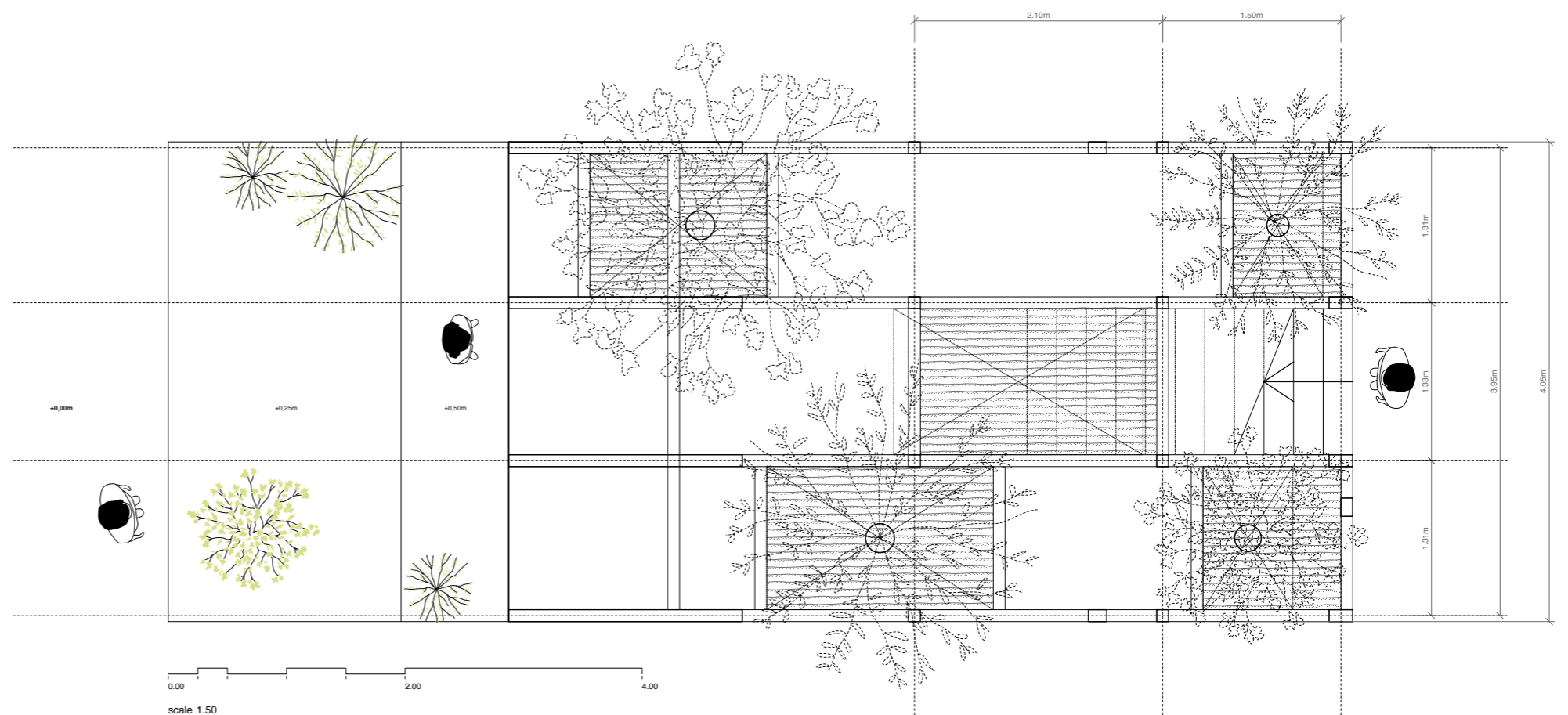
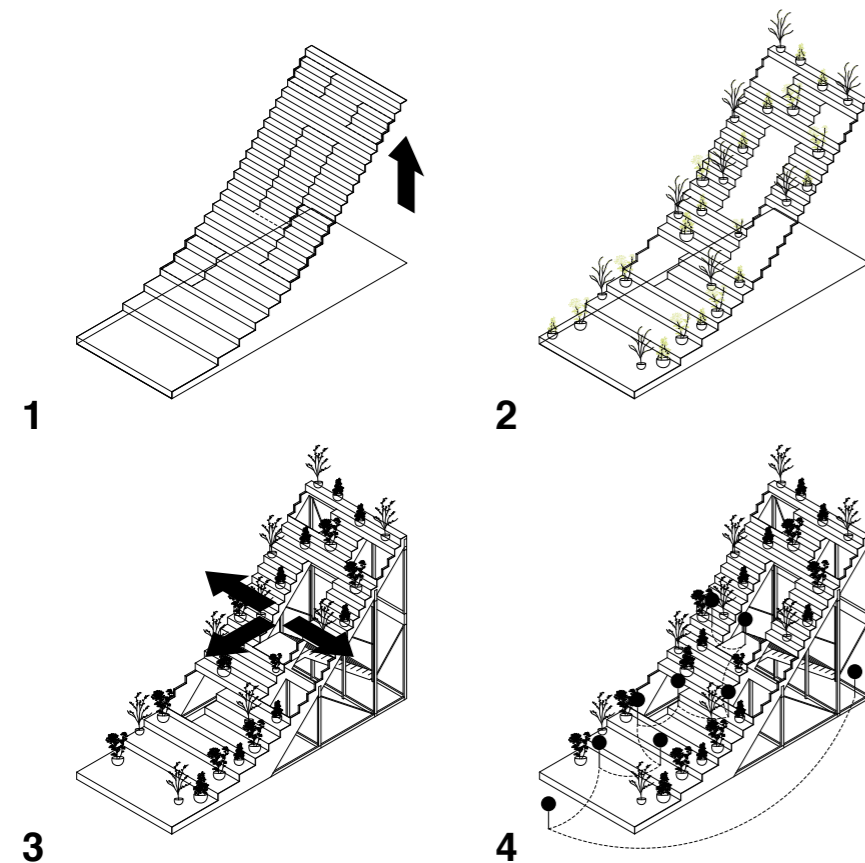
FLOOR PLAN - GROUND WILD GARDEN

Suggested botanical species: Miscanthus, Artemisa arborescens, Juglans regia, Lippia citriodora, Large Myrtus, Teucrium fruticans azureum... (scented mediterranean species and fruit trees).



scale 1.50

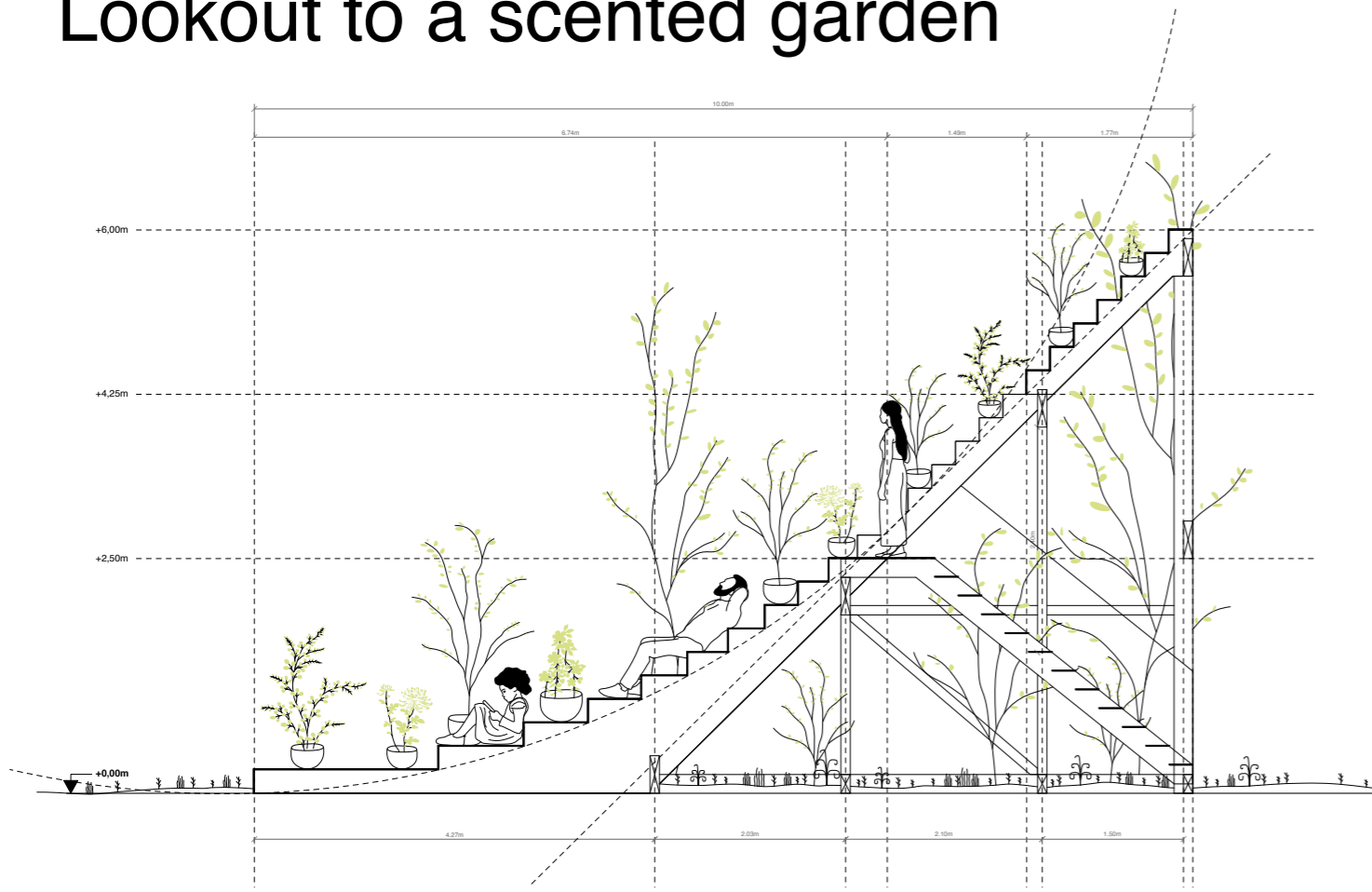
Floor Plan - Potted scented garden



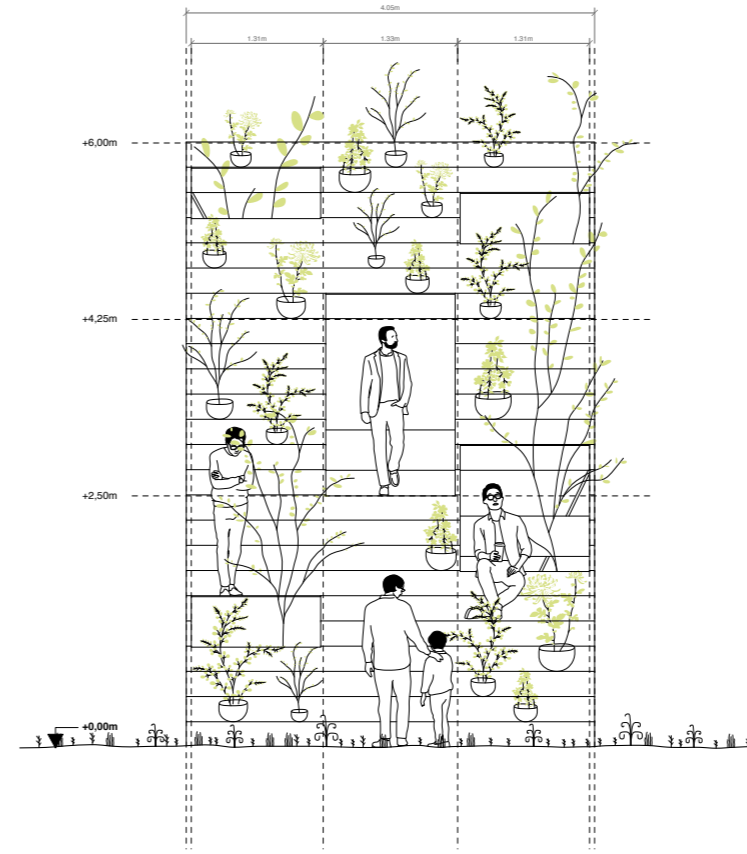
scale 1.50

Floor Plan - Ground wild-garden

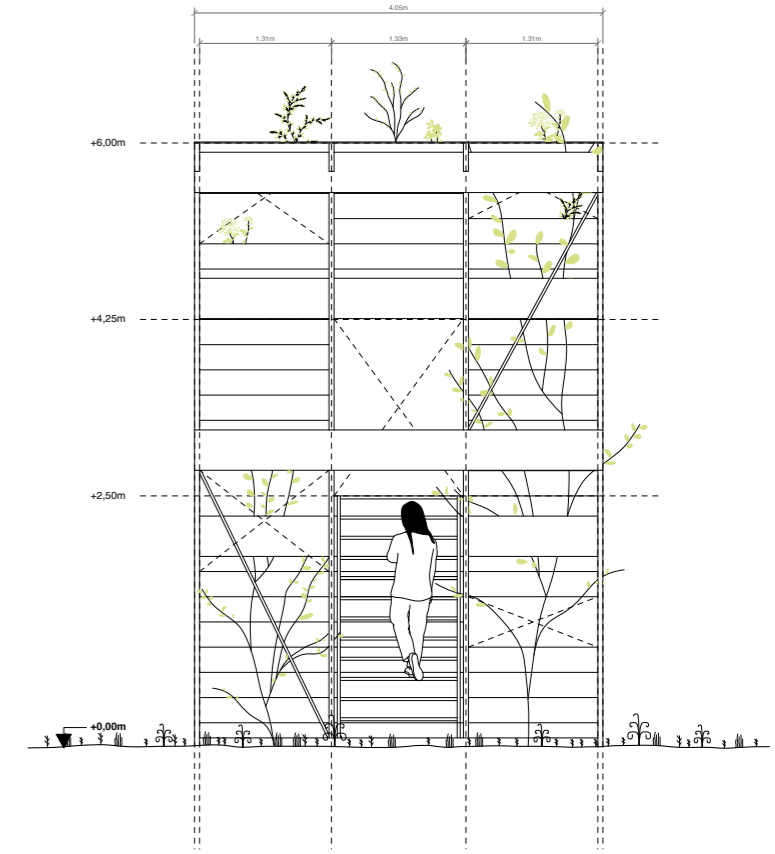
Lookout to a scented garden



Transversal section



Front elevation



Back elevation



LOOK-OUT

A space of interrelation with nature where the boundaries between the human and the non-human are blurred through a multi-sensorial experience. A folded space to perceive the garden and its borders.

POTTED GARDEN

Lavanda, Rosemary, Origanum, Argemone, Myrtus, Laurus nobilis, Salvia officinalis, Vitex agnus-castus composed this landscape, planted in white pots. A place to experience through the senses.

WILDGARDEN

Medium sized and tall tree scented species, under the structure there will be lights that enhance the beauty of this area, in the night the light will go through the perforations, giving indirect light to the platform and enhancing the trees, creating a warm environment.