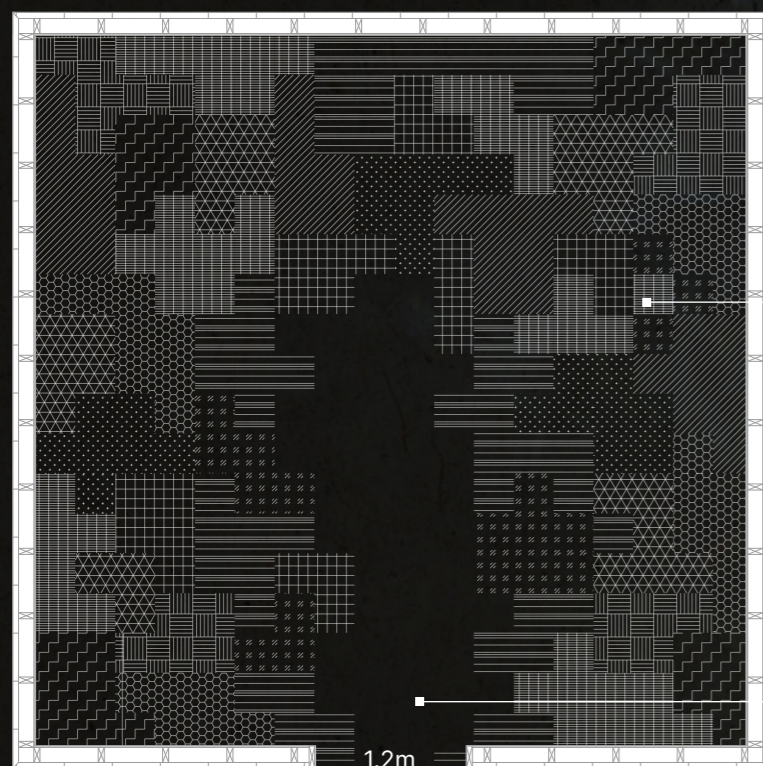


# echoes of arrival

In Canada, where immigrants constitute over 21% of the population, countless individuals undertake arduous journeys, facing profound social, political, emotional, and financial trials. For many, especially parents, these sacrifices are driven by an unyielding aspiration: to secure a future replete with promise for their children. *Echoes of Arrival* captures the resilience and fortitude that propel immigrants beyond borders, confronting the unknown with the hope of cultivating boundless possibilities.

Externally, the installation presents as a stark, enclosed structure—a physical manifestation of the constraints and barriers immigrants often encounter. Yet, stepping inside, visitors are met with a transformative experience: mirrored walls create the illusion of an endless landscape, a vibrant tapestry of flowers that stretches infinitely in all directions. This juxtaposition of confinement and infinity evokes the duality of the immigrant experience — the seeming limitations of new beginnings contrasted with the expansive dreams that drive them. *Echoes of Arrival* invites viewers to consider the resilience inherent in these journeys, inspiring empathy and recognition of the boundless aspirations that define the immigrant spirit.

plan  
1:50



**proposed plants**

- Achillea millefolium*
- Coreopsis lanceolata*
- Eutrochium maculatum*
- Liatris spicata*
- Monarda didyma* 'Purple Rooster'
- Nepeta x faassenii*
- Solidago canadensis*
- Symphotrichum novae-angliae*
- Tradescantia ohiensis*

- Panicum virgatum*
- Schizachyrium scoparium*

**path**

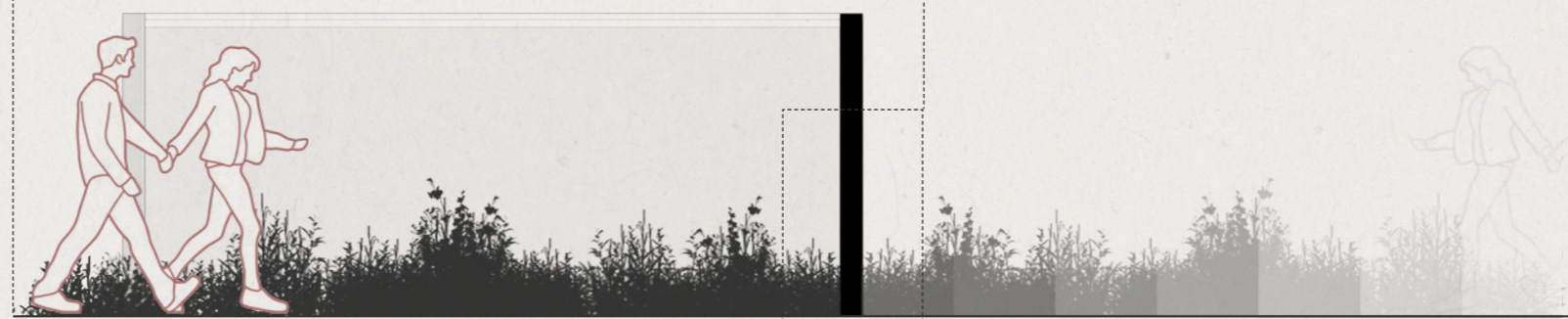
- gravel or on site ground material



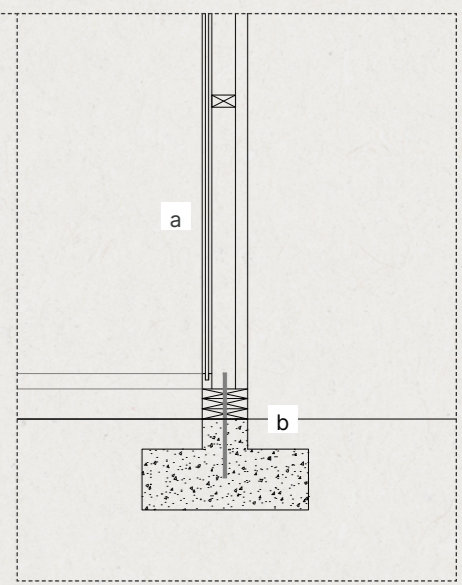
elevation a  
1:50



section b—b'  
1:50



detail  
1:25



- a wall composition**
  - mirror or polished aluminum
  - wood studs with noggings
  - wood slats with *shou sugi ban* treatment
- b anchoring**
  - wall anchored to concrete base with bolts through footing plates

