

# Avoidable Fate JARDIN DE METIS COMPETITION, 2025

Team: Michela Sutter, Aurelie Griveaux

Avoidable Fate explores the boundaries created by human thought and the risks inherent in individualism. The chasm at the garden's center symbolizes the distortions we encounter in the search for truth, caught between perception and reality.

Upon entering, you are enveloped in tall vegetation that shields you from onlookers, creating a secluded space for introspection. The path slopes up toward the center, as you draw nearer, the planting begins to offer subtle, sensory warnings: the rustle of grasses, the sting of thorns, and the scent of florals awaken an instinctual alertness. But by then, it is too late. You arrive at the central void, confronted with both destruction and your own reflection—a stark reminder of humanity's tendency to disregard nature.

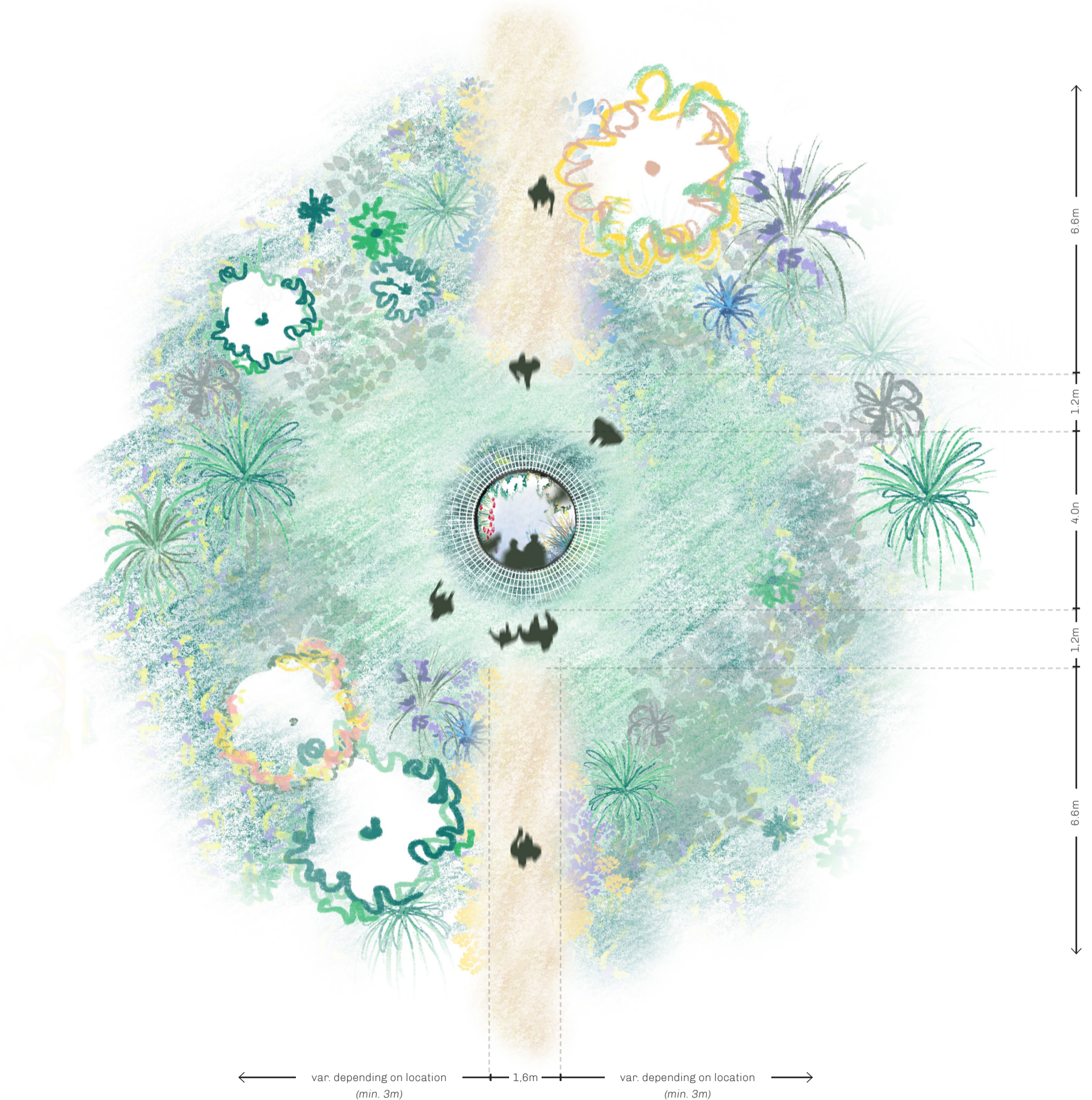
But not all hope is lost: the mirror also encourages a moment of self reflection, and the opposing path a metaphor for an alternate path. One where mother nature is at the forefront, and we listen to her calls. Nature knows no boundaries, so we must learn from her.

Sugar Maple (*Acer saccharum*)  
 Big Bluestem (*Andropogon gerardii*)  
 Switchgrass (*Panicum virgatum*)  
 Indian Grass (*Sorghastrum nutans*)  
 Staghorn Sumac (*Rhus typhina*)  
 Balsam Fir (*Abies balsamea*)  
 Little Bluestem (*Schizachyrium scoparium*)  
 Prairie Dropseed (*Sporobolus heterolepis*)  
 Sweet Gale (*Myrica gale*)  
 Wild Bergamot (*Monaarda fistulosa*)

Sensitive Fern (*Onoclea sensibilis*)  
 Northern Wild Raisin (*Viburnum nudum*  
 var. *cassinoides*)  
 Poison Ivy (*Toxicodendron radicans*)  
 Canada Thistle (*Cirsium arvense*)  
 Stinging Nettle (*Urtica dioica*)  
 Wild Thyme (*Thymus serpyllum*)  
 Canadian Anemone (*Anemone canadensis*)  
 Wild Ginger (*Asarum canadense*)

*"The beauty of the trees, the softness of the air, the fragrance of the grass, speaks to me. The summit of the mountain, the thunder of the sky, the rhythm of the sea, speaks to me. The strength of fire, the taste of salmon, the trail of the sun, and the life that never goes away, they speak to me. And my heart soars."*

Chief Dan George, Tseil-Waututh Nation (1899-1981)

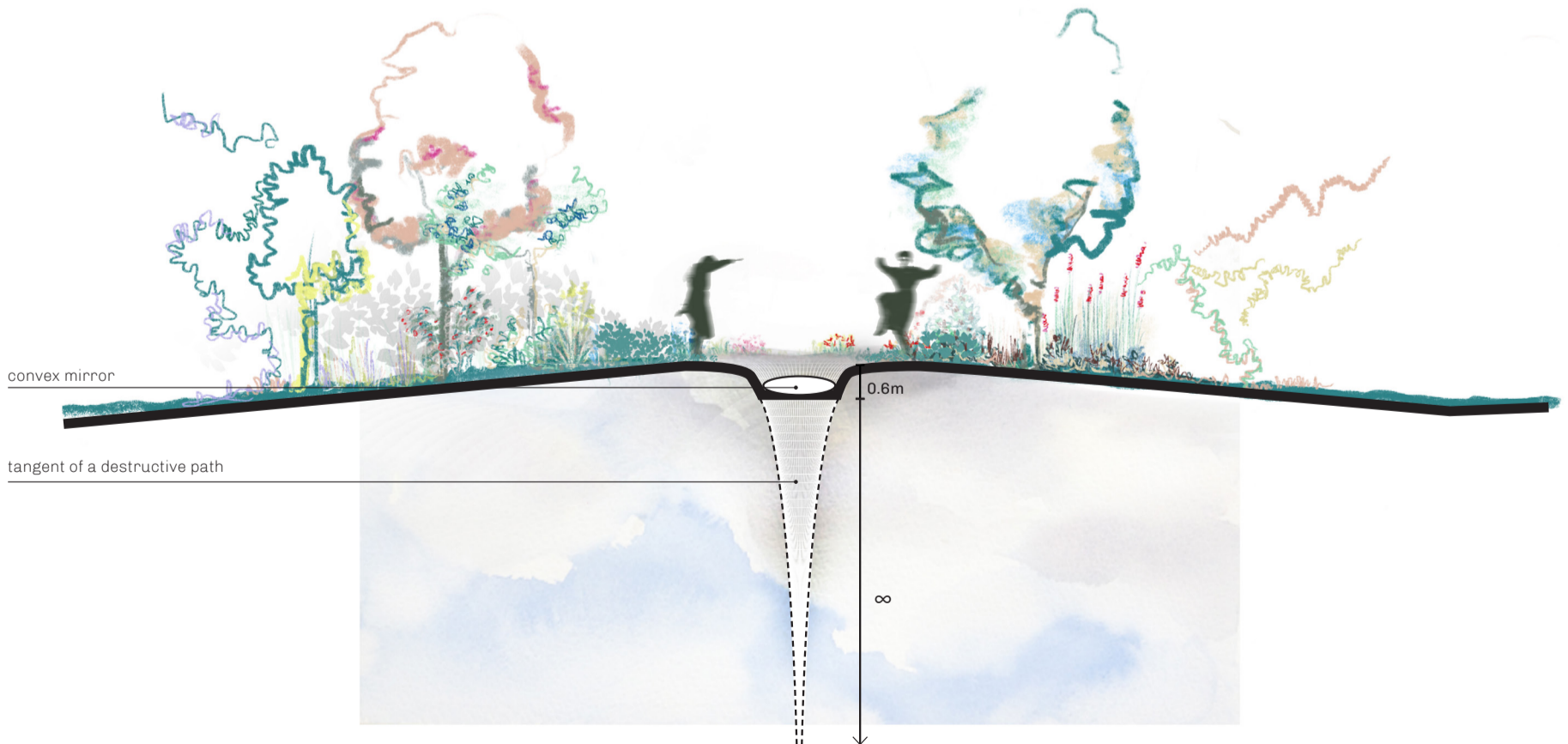




**Two paths approaching the void**  
*Planting offers subtle, sensory warnings along the way*



**View into the void**



**Profile 1:100**  
*Land slopes up to a point of 60cm above the surrounding level*  
*A convex mirror is submerged to reflect a view on the human centered in nature*