



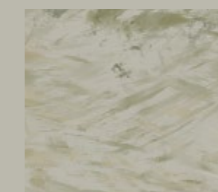
1:50 @ A3

## RE-ROOTING

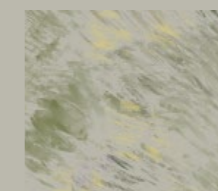
*Cosmopolitan species as a portal into the multitudinous relationships that define life in place*

Today, the unknowingness of being foreign is becoming an ever more universal state of being. When people move across borders, we share a sense of uprootedness. New languages, systems, traditions and landscapes overwhelm. We can find solace in identifying commonalities and use these to unlock an understanding of the place we have landed. Beginning with plants that defy borders - cosmopolitan species found in most regions of the world. What can these species teach us about adaptability and how can they help us read the new landscape?

Here, the visitor enters from one of three narrow boardwalks that run parallel to each other but zig-zag allowing visibility only a few steps ahead into a mass of *Phragmites australis*, an extremely widespread species. This creates a sense of isolation and obscuring others walking the parallel paths. In the center of the garden the narrow paths join in a central meeting place allowing the visitor to pause. From this point onwards the pathway widens allowing people to walk side-by-side and through a lower planting matrix combining both cosmopolitan and regional plants.



*Phragmites australis* subsp. *americanus*



*Deschampsia cespitosa*  
*Pteridium aquilinum*  
*Centella asiatica*  
*Symphyotrichum novae-angliae*  
*Solidago canadensis*  
*Monarda fistulosa*



Section aa  
1:50 @ A3



Section bb  
1:50 @ A3

## RE-ROOTING

*Cosmopolitan species as a portal into the multitudinous relationships that define life in place*