

Cosmic Kaleidoscope

Mount Kailāśā

Sacred borders

Long ago ,before the earth or the sky was made ,Creator who is the greatest of all, had two children ,*Shiva* and *Shakti*.

Shiva(Masculine) and Shakti(Feminine) were without form, they were not human beings ,they were not animals, nor they were like rocks.

Many ages passed and then shiva made the earth and shakti made sky. When it was ready ,the earth was very big and shakti put sky like a lid above earth. But the lid was too small and shakti said ,shiva make the earth smaller ,so the sky will fit it.

So shiva pushed and pulled the soil together until the sky and earth were the same size and as a result part of the world stood up as mountains ,and today we call them as *Himalayas*.

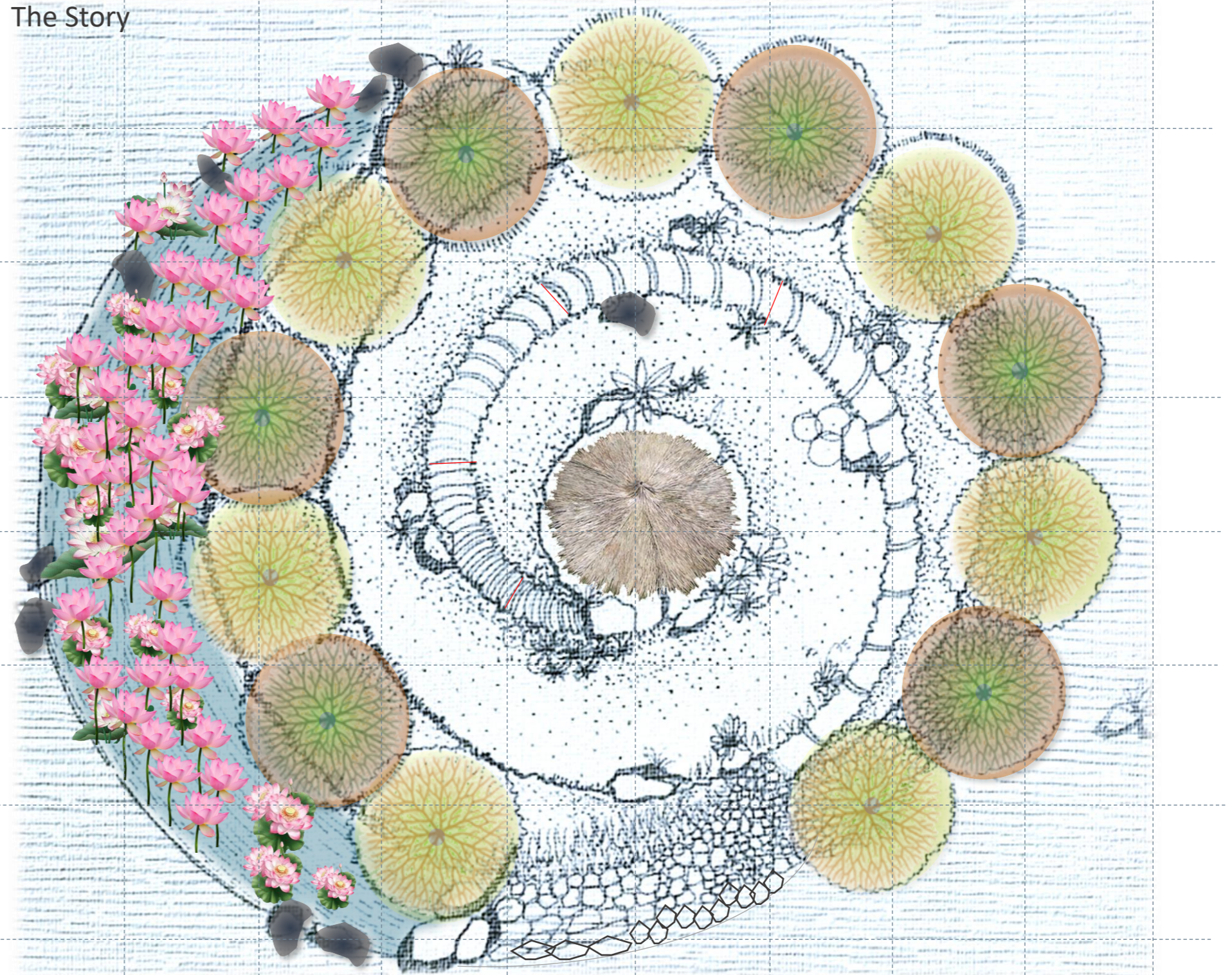
Myths of Himalayas of India

The word *Kailasa* is derived from *Sanskrit* meaning *crystal* or the *snow jewel mountain*.

In sacred Indian mythology ,the mountain is the abode of Shiva and his consort Shakti who reside along with their children ,located at the trijunction of 3 countries Nepal ,India and China.

In early Indian scriptures Kailash is described as mountain in the centre of 6 mountain ranges and shiva is seated in lotus position engaged in meditation.

The Story



Plan

0.45

1.35 m



Cosmic Kaleidoscope @ Mount Kailāśa

Sacred borders

This garden installation brings to life the grandeur and complexity of Mount Kailash, transcending geographical borders to celebrate its limitless beauty and spiritual significance.

Journey Through Unity

As visitors travel up the hill, they experience the rich geology, extraordinary Himalayan flora and fauna, and the intricate tapestry of science, environment, myth, folklore, spirituality, climate change, and human settlements. This journey provides a nuanced portrait of the legendary Trans-Himalayan mountains, emphasizing their role as a unifying force beyond national boundaries.

Enigmatic Mysteries

Encircling the hill are trees unearthed from below, symbolizing the enigmatic mysteries both within the hill and the broader landscape. The tree lines at the valleys blur the perspectives of borders, drawing visitors to the bare rock below the thatch roof. This design shifts the focus from mere beauty to critical questions of conservation.

Path of Extinctions

The elliptical path, divided into five sections representing the mass extinctions these mountains have witnessed, guides visitors to the summit. Covered with a simple thatch roof, the summit offers a place for reflection on the resilience and fragility of these ecosystems.

Reflective Waters

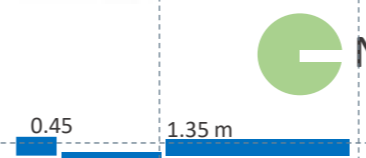
The southern edge of the installation features a sheet of water with lotus flowers, reflecting the hill and its surroundings. This serene water element symbolizes the interconnectedness of life and the importance of preserving these natural wonders.

A Testament to Change

The mound with its elliptical path, encircling trees, stream, thatch roof above, and bare rock below, captivates visitors in deep meditation. It stands as a testimony to the changing landscapes of these fragile ecosystems, urging us to see beyond borders and embrace the unity and conservation of our shared natural heritage.



The Journey



Cosmic Kaleidoscope @ Mount Kailāśa

Sacred borders

The poetry of trans Himalayan borders

In the heart of the cosmos, where energies dance and weave, there is a place unlike any other—Mount Kailash, the sacred abode of Shiva and Shakti. Rising from deep within the earth, it is an enchanted snow-clad peak, its origins a testament to ancient tectonic forces that sculpted it from the ocean's depths to the sky's domain.

This mountain, cradled by clouds and kissed by sunrise, is a sanctuary where serendipity meets stability, where uncertainty yields to the timeless presence of divine harmony.

Shiva sits in stillness, the calm of eternity etched into his form, while Shakti, vibrant and dynamic, moves through the flora and fauna that thrive in their shared energy.

Around them, plants flourish—delicate blooms, ancient trees, and rare herbs, each one an expression of the mountain's limitless charm. Animals roam freely, from the graceful snow leopards to the elusive red pandas, guardians of this untouched realm ignorant of the political borders.

Yet, as the world shifts rapidly with the onset of climate change, even this sanctuary feels the tremors of human impact. This fragile balance,, begins to waver with human induced borders.

Shiva and Shakti, embodiments of cosmic forces, reflect the dual nature of existence—creation and destruction, nurture and upheaval.

It is a reminder, whispered in the mountain winds, that our actions ripple through the earth. This garden installation, born from the clash and union of tectonic plates, stands as a call to awaken.

To honor its beauty, we must act with reverence, for it is one of a kind—a living symbol of earth's resilience, both fragile and fierce, where the eternal dance of Shiva and Shakti continues within oneself, calling us to protect and preserve.

In winter, the hill is clothed in snow, a serene, silent mantle laid by Shiva's hand, an embodiment of stillness and reflection.

Come summer, Shakti awakens in vibrant bursts—the hillsides come alive with the fiery reds and pinks of rhododendrons, the delicate allure of ground orchids adding a dash of color to the mountain's ancient, rich geology (diverse stone formations are placed on the mound).

As monsoon arrives, ripples dance across the water beds below, a display of life and motion, a drama that unfolds like Shakti's playful energy, bringing dynamism to this high-altitude garden.

Visitors who reach this sacred mountain witness a garden installation unlike any other—a microcosm of life, a testament to Shiva's stability and Shakti's creativity, intertwined forces that shape every element of this mighty peak across borders.

