

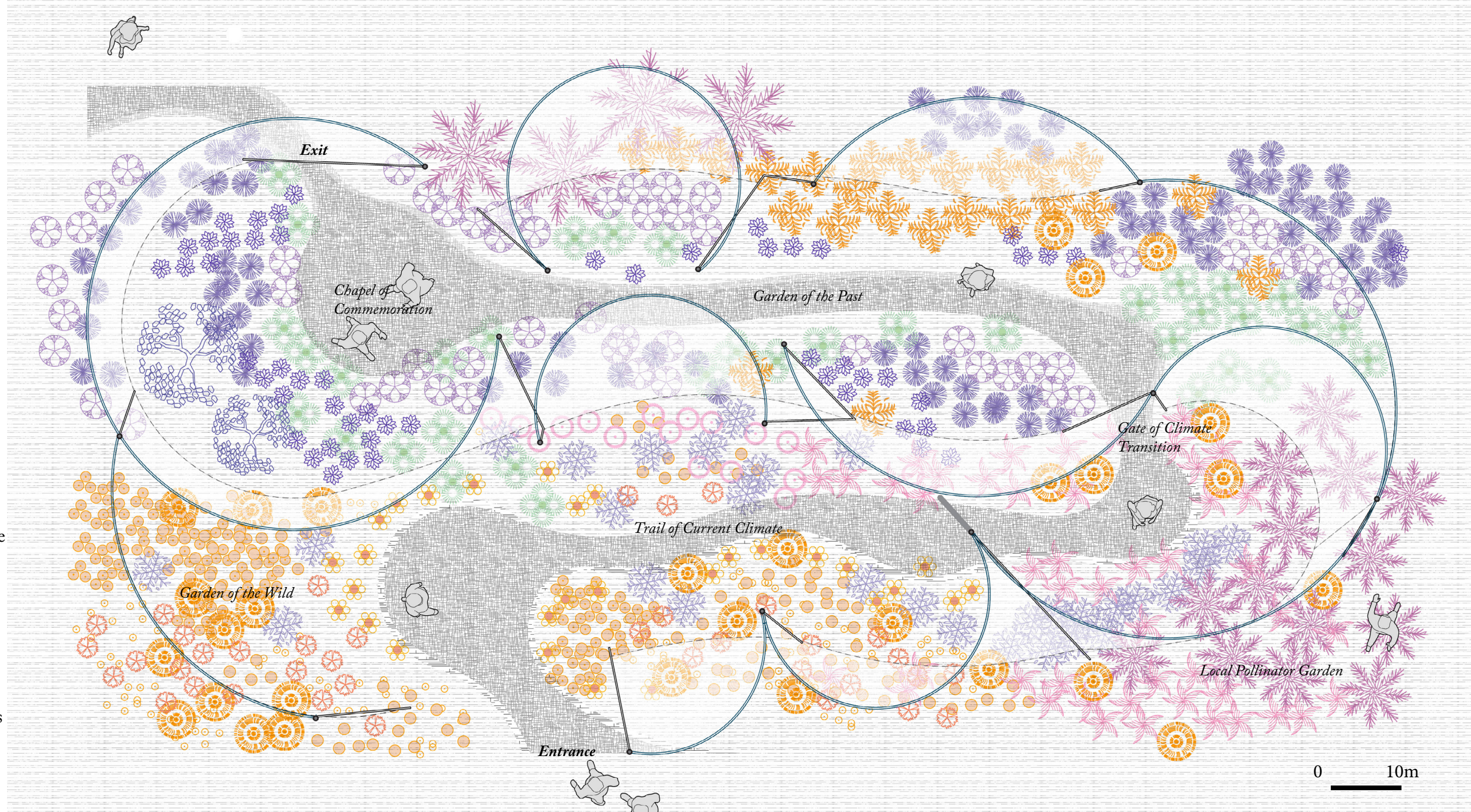
The Chapel for Climate Change

Climate change is silently reshaping Canada's landscapes. Quebec faces intensifying extreme weather, including drought, heat waves, and heavy summer rains. As native plant communities become fragile, more tolerant species are replacing them, creating invisible borders between past and future ecosystems.

The Chapel for Climate Change aims to visualize and spatialize these shifting ecological boundaries by transforming dominant vegetation communities. This project reveals the beauty inherent in Quebec's evolving landscape while serving as a public education space on climate change impacts.

Divided by translucent fabrics, the design features a serpentine route leading to a final chamber for commemoration and meditation. As visitors traverse the path, gauze gently softens the borders between vegetation zones, transitioning from current climate-tolerant plants to culturally significant species now threatened by changing weather patterns.

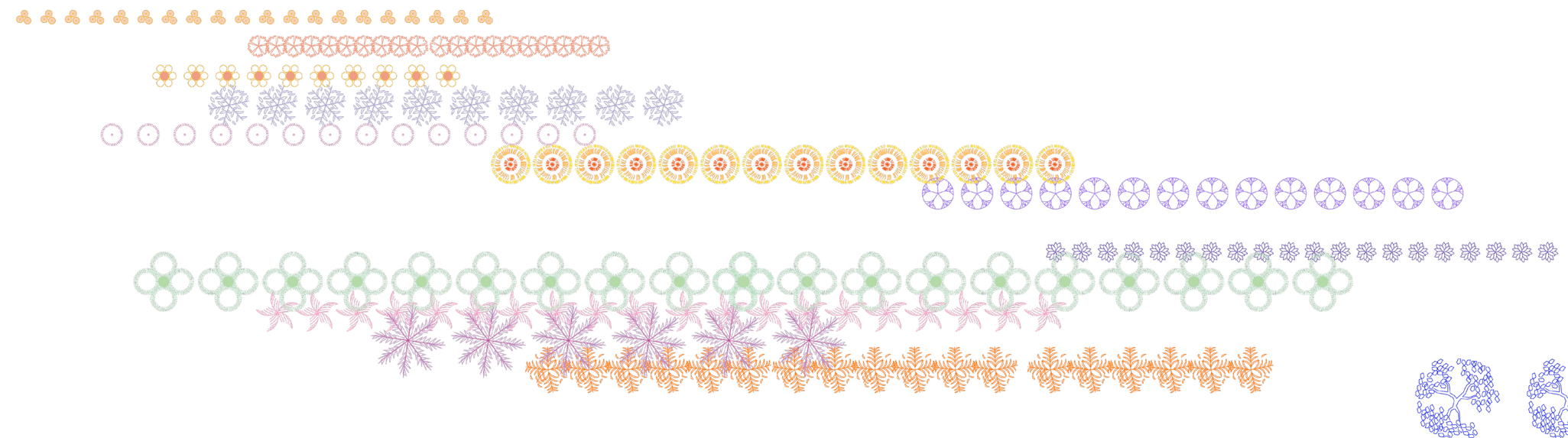
This immersive experience invites contemplation of an uncertain yet hopeful future, encouraging visitors to embrace our changing environment's ambiguity and build a connection with Quebec's dynamic ecological legacy.



Plant List

Tussilago	<i>Tussilago farfara</i>
Canada Goldenrod	<i>Solidago canadensis</i>
Daisy	<i>Bellis perennis</i>
Garden Cosmos	<i>Cosmos bipinnatus</i>
Bunchberry	<i>Cornus canadensis</i>
Rudbeckia	<i>Rudbeckia hirta</i>
Columbine	<i>Aquilegia vulgaris</i>
Iris	<i>Iris germanica</i>
Lupine	<i>Lupinus perennis</i>
Petunia	<i>Petunia × atkinsiana</i>
Milkweed	<i>Asclepias syriaca</i>
Astilbe	<i>Astilbe chinensis</i>
Orange Day Lily	<i>Hemerocallis fulva</i>
Hydrangea	<i>Hydrangea macrophylla</i>

Plant Spatial Sequence: From Future to the Past



The Chapel for Climate Change

Entrance



Trail



Chapel

