

EARTHEN BOUNDARIES

This installation critiques spatial borders between constructed beauty and the rawness of material sourcing. Dividing the site into two distinct halves, one part features a controlled garden landscape, while the other reveals the spatial consequences of material extraction. Builders excavate on site, using extracted soil to construct a rammed earth wall with a dual character: a finalized polished side facing the garden, and a tarnished side

with its formwork facing the extraction zone. Along the main path, the border dissolves into the ground, slowly revealing the site's unrefined half. Visitors are encouraged to sit gardenside, contemplating how we demarcate, disrupt, and draw from the land; or, they can continue to turn their backs on those effected by extraction.



FLOWERING CHIVE

Allium schoenoprasum

Bloom: Summer
Height: 12"
Spread: 12"



ORNAMENTAL ONION

Allium 'Persian Blue'

Bloom: Spring, Summer
Height: 18"
Spread: 6"



MONA LAVENDER

Plectranthus x hybrida 'Mona Lavender'

Bloom: Fall
Height: 18"
Spread: 12"



GRAPE LANTANA

Lantana montevidensis 'Lucious Grape'

Bloom: Spring-Fall
Height: 6"
Spread: 24"



ORNAMENTAL ONION

Allium 'Ambassador'

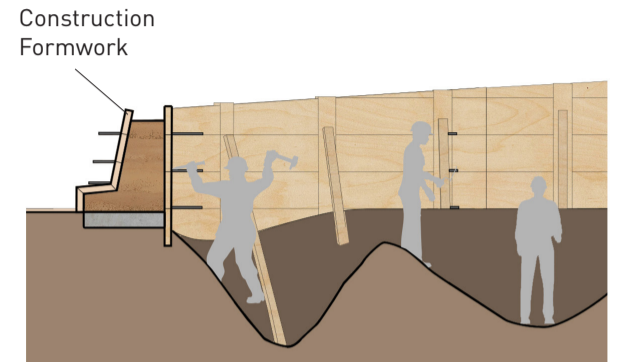
Bloom: Spring, Summer
Height: 48"
Spread: 6"



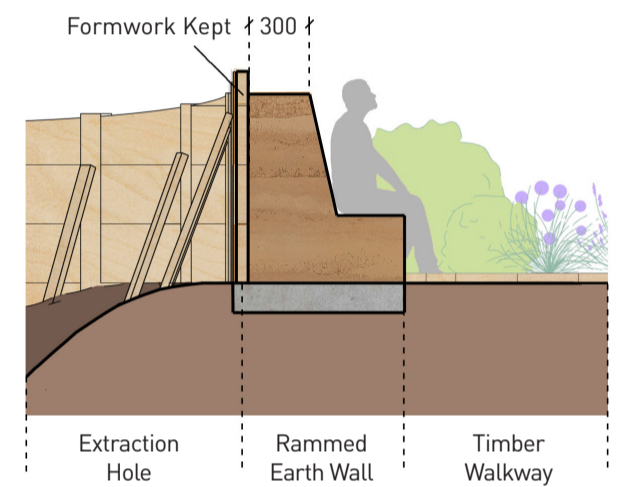
JAPANESE HOLLY

Ilex crenata 'Compacta'

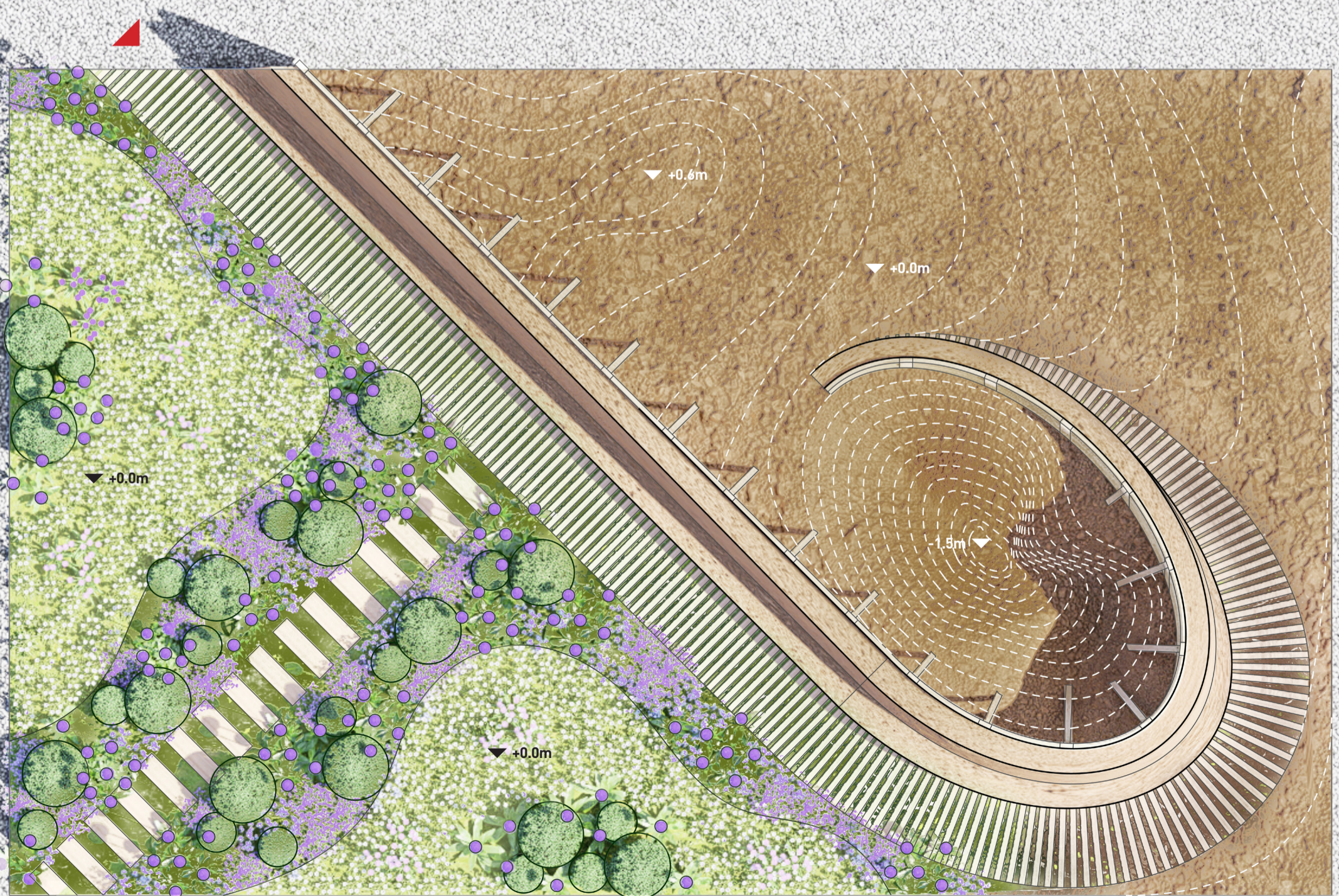
Bloom: None
Spread: 3'
Height: 3'



INSTALLATION DURING CONSTRUCTION

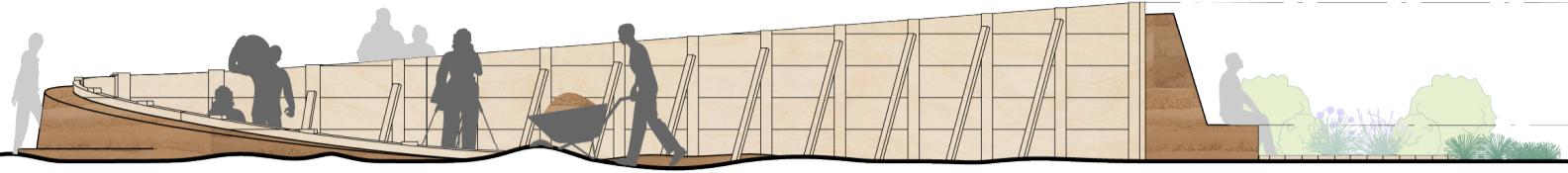


INSTALLATION AFTER CONSTRUCTION



+2.00

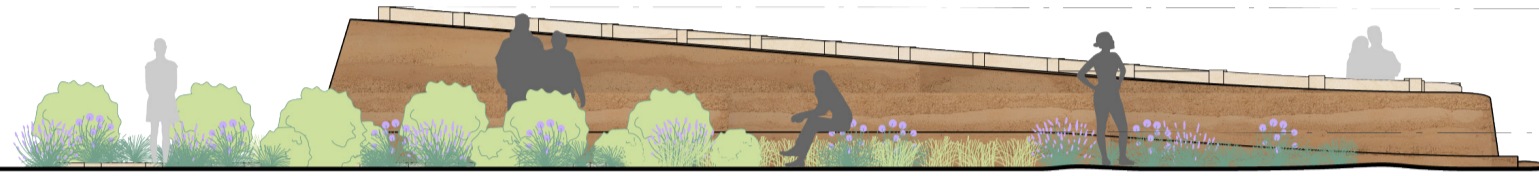
+0.45



ELEVATION OF EXCAVATION ZONE
1:100

+2.00

+0.45



ELEVATION OF GARDEN
1:100



VIEW FROM ENTRY