

In the fabric of modern cities, "boundaries" are no longer simply lines of separation; they are dynamic, multi-layered spaces. The work "Between" explores this delicate relationship of division and connection, using architectural installations and natural elements to reveal the multi-faceted nature of boundaries and the potential for communication that lies within them.

The vertically rising wooden structures resemble towering buildings in a city, creating a visual boundary. These neatly aligned wooden columns act as both barriers and filters, allowing light to seep through and casting shifting patterns on the ground. The interplay of light and shadow mimics an urban landscape and hints at the permeability of boundaries. The effect evokes the ebb and flow of human connections—distant yet subtly linked.





The seating arrangement in the installation creates a space for interaction, inviting viewers to sit at opposite ends and face each other. This setup challenges the traditional notion of boundaries, transforming separation into a bridge for connection. It prompts viewers to reflect: In urban life, do we use "boundaries" to define our relationships with others? Here, the boundary becomes a catalyst for communication rather than mere separation.

The inclusion of climbing plants adds a temporal layer to the piece, as the vines gradually climb the wooden structures, blurring the line between the artificial and the natural. This slow-growing process, like the persistent force of nature within cities, continuously seeks to transcend man-made boundaries. The pink and purple blooms intertwine with the wood, symbolizing nature's soft response to rigid architecture, creating a subtle tension between opposition and harmony.

"Between" invites viewers into a reflective space: How do we define and cross boundaries? How do we find connections within separations? And how do we maintain the soft vitality of nature within the rigid structures of the city? The dialogue between wood and plants reflects the boundaries we continuously negotiate in modern life—boundaries that are both limits and new beginnings.



suggested plants

Erect Herbaceous Plants

- Thyme - *Thymus vulgaris*
- Catnip - *Nepeta*
- Russian Sage - *Perovskia atriplicifolia*

Climbing Plants

- Ivy - *Hedera*
- Pink Dipladenia (or Mandevilla) - *Mandevilla sanderi*

Accent Plants

- Iris - *Iris*
- Purple Coneflower - *Echinacea purpurea*

Ground Cover Plants

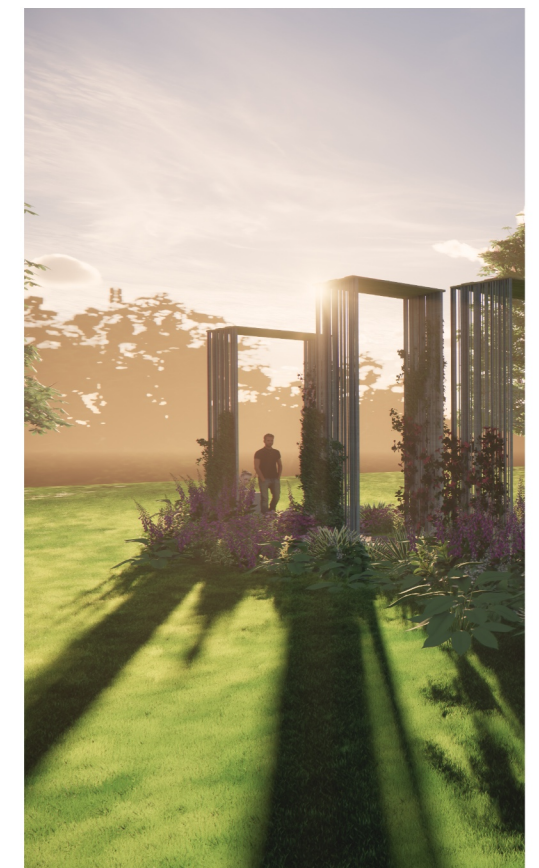
- Mexican Petunia (often also called Ruellia) - *Ruellia simplex*
- Carnation - *Dianthus*

Foliage Plants

- Eucalyptus - *Eucalyptus*
- Dracaena (or Dragon Tree) - *Dracaena*



Watching angle - Front View.



Light and shadow effects.