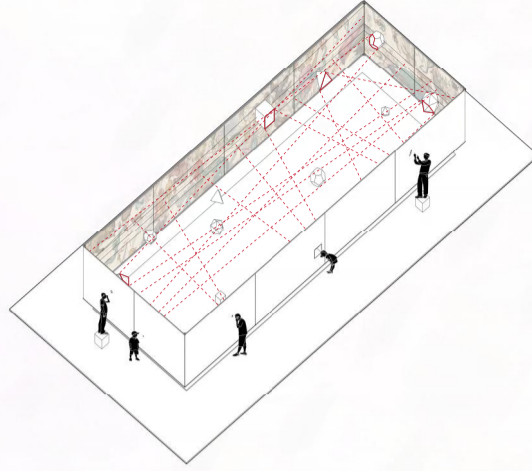


# Planetarium

## Concept

The field of architecture has historically influenced how humanity understands and perceives the universe. For example, the Pantheon contains references to celestial bodies, with sunlight streaming through the oculus into the interior of the building. Mythological tales are often connected to astronomical imaginings, such as droughts, hurricanes, and meteor showers. What are the stories about astronomy in the 21st century? Topics such as space debris, spacecraft, and orbital paths come to mind. People have once again begun to worry about the cosmos, to fear, as Bruno Latour points out, that the sky may be falling on our heads! With the development of neoliberalism in modern society, humanity's exploration and extraction of resources such as water, metals, and other space resources, including privatization, raises questions about how we narrate and design the atmosphere and outer space. Philosopher Timothy Morton argues that we must confront not only beauty but also the darkness and strangeness of nature. The Romantic view of "nature" separates nature from culture, and capitalist ideology exploits this through a simplified form of environmentalism. We engage in speculation by overlapping the atmosphere and the biosphere. A planetarium is typically a device used to display the night sky and planetary systems, simulating the "motions of the heavens" with mechanical models. I have integrated this concept into a garden, inspired by Ignace Gaston Pardies's work, "Mapping the Heavens in 1693" projecting it onto a membrane made of ramie fabric within the garden. Mysterious Platonic solids serve as viewports placed on the membrane, allowing viewers to peek through small windows into the garden -its cosmos, stars, and flora. This creates a mechanism for us to reflect on what we perceive and understand. The plants and installations form a unique space that is both a greenhouse and a room, with the exterior revealing elusive structures and devices, while the interior displays constellation maps enriched with astrological and deep symbols, alongside garden areas that are elusive yet accessible.

## Diagrammatize



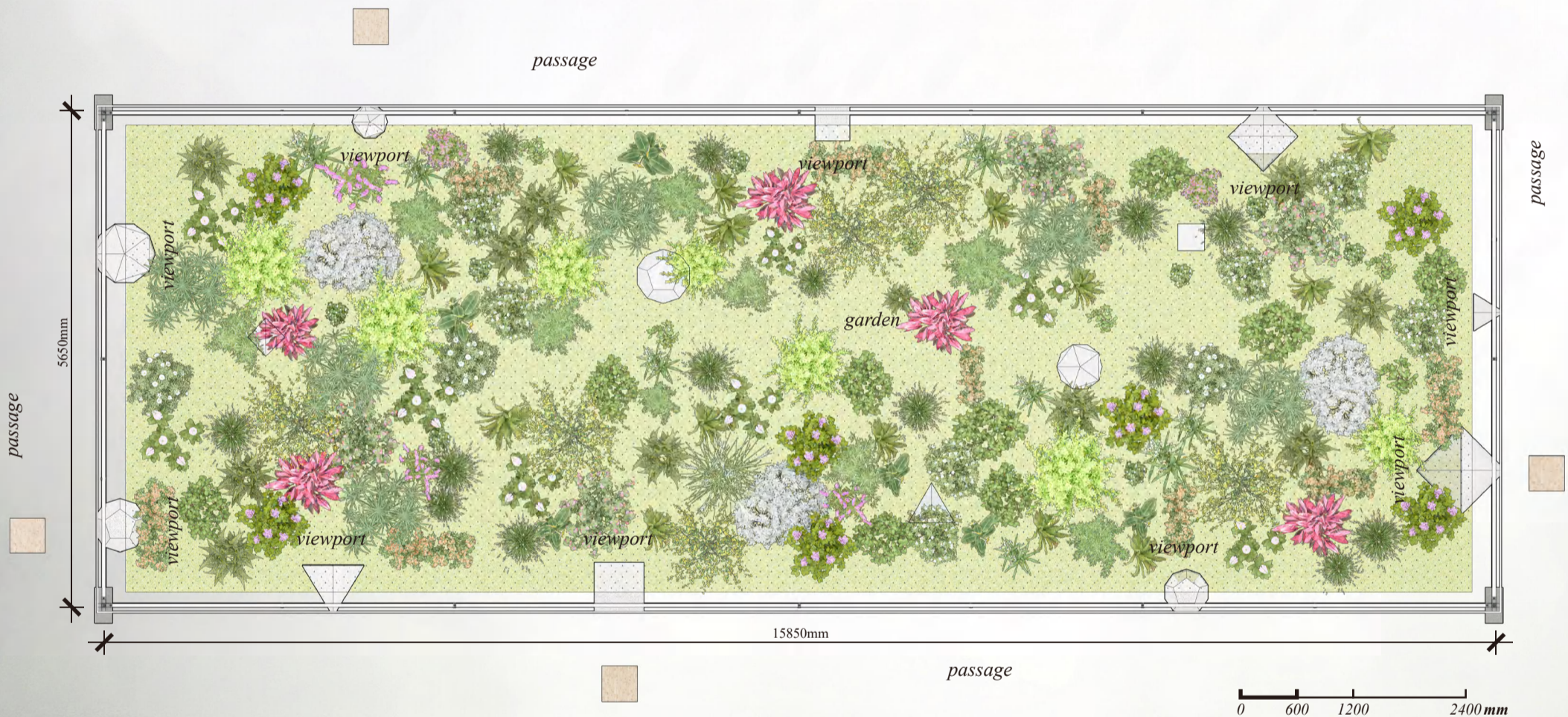
Mapping the Heavens in 1693



## Suggested plants

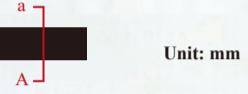


## Plan 1:60

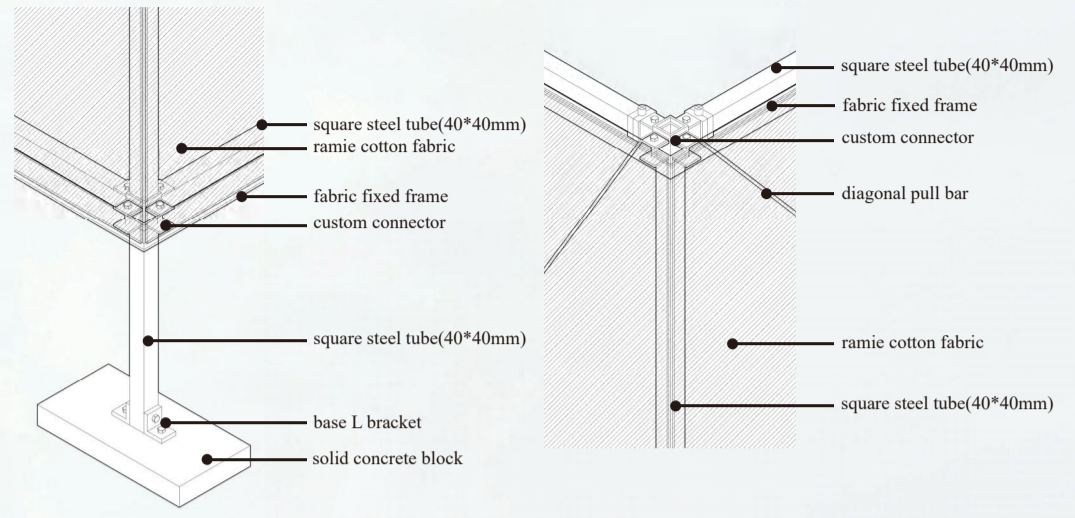


# Planetarium

Section a-A



Detail



Section b-B

