

MEMORY POCKET 1 - the tv room
 CULTURAL PLANT - ALEXANDER MACKENZIE HYBRID ROSE
 NATIVE SIBLING - ROSA VIRGINANA/WILD ROSE

MEMORY POCKET 2 - the twin bed
 CULTURAL PLAN - PAPAVER ORIENTALE - SUMMER
 NATIVE SIBLING - SANGUINARIA CANADENSIS - SPRING

MEMORY POCKET 3 - the kitchen
 CULTURAL PLANT - HELIANTHUS ANNUS / SUNFLOWER
 NATIVE SIBLING - RUDBECKIA LACINIATA/CUTLEAF CONEFLOWER

MEMORY POCKET 4 - the dining table
 CULTURAL PLANT - IRIS GERMANICA
 NATIVE SIBLING - IRIS VERSICOLOR

MEMORY POCKET 5 - the knitting chair
 CULTURAL PLAN - MARIGOLD
 NATIVE SIBLING - COREOPSIS TINCTORIA

GRASSY MOUNDS
 ● ANDROPOGON GERARDII - TALL - 4'-6' TALL
 ● PANICUM VIRGATUM - medium - 3'-6' TALL
 ● SORGHASTRUM NUTANS - low - 3'-5' TALL
 ○ COMMON MILKWEED, ASCLEPIAS SYRIACA

MEMO-MORPHIS

Crossing borders goes beyond mere physical movement. Carrying the past, reshaping our present, and envisioning unknowable futures, we transform to new environments while our memories of the past fade with each recollection.

One team member's grandmother, crossing political and international borders carrying the weight of personal history, illustrates this metamorphosis of identity – as with many immigrants, she adapted and settled into her new surroundings.

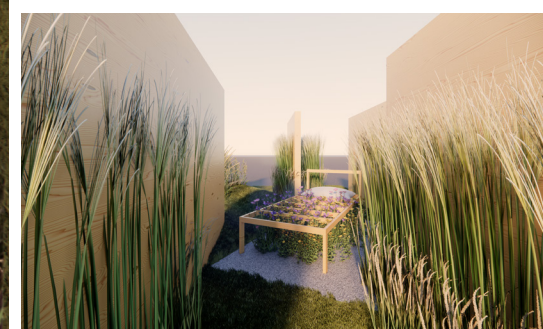
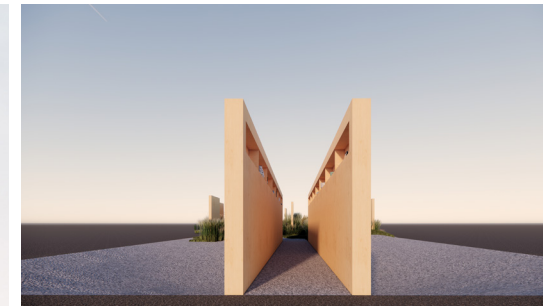
Aging and dementia complicate this process as memories blur and drift. Struggling to differentiate past from

present, she created moments of clarity by collecting found objects like an old clock or water kettle or by repositioning her bed, in a persistent battle to reclaim her identity.

The planting selection reflects this dynamic, combining culturally imbued species like Chrysanthemum with Asters, a native analog. The Monarch Butterfly embarks on a multi-

generational migration between Mexico and Quebec relying on specific plants and habitats for survival. Groups of Milkweed provide resources for the butterfly to reproduce and resume their journey, highlighting the importance of reintroducing familiar spaces and objects in our rapidly changing world, crucial for our collective existence.





+1.8M' - TOP OF WALL

+0.4M' - TOP OF MOUNDS

+0.0M' - ENTRY

-1.0M' - EXCAVATION

