

# FUNGAL REBIRTH

ANTHROPOCENE IS THE DEFINITION OF THE HUMAN BEING WHO HAS EATEN THE EARTH.

THE TELLURIC FORCE OF HUMAN ACTIVITY SEEMS TO HAVE CONTAMINATED BEYOND THE POINT OF NO RETURN SOILS, WATERS, AND LIFE FORMS.

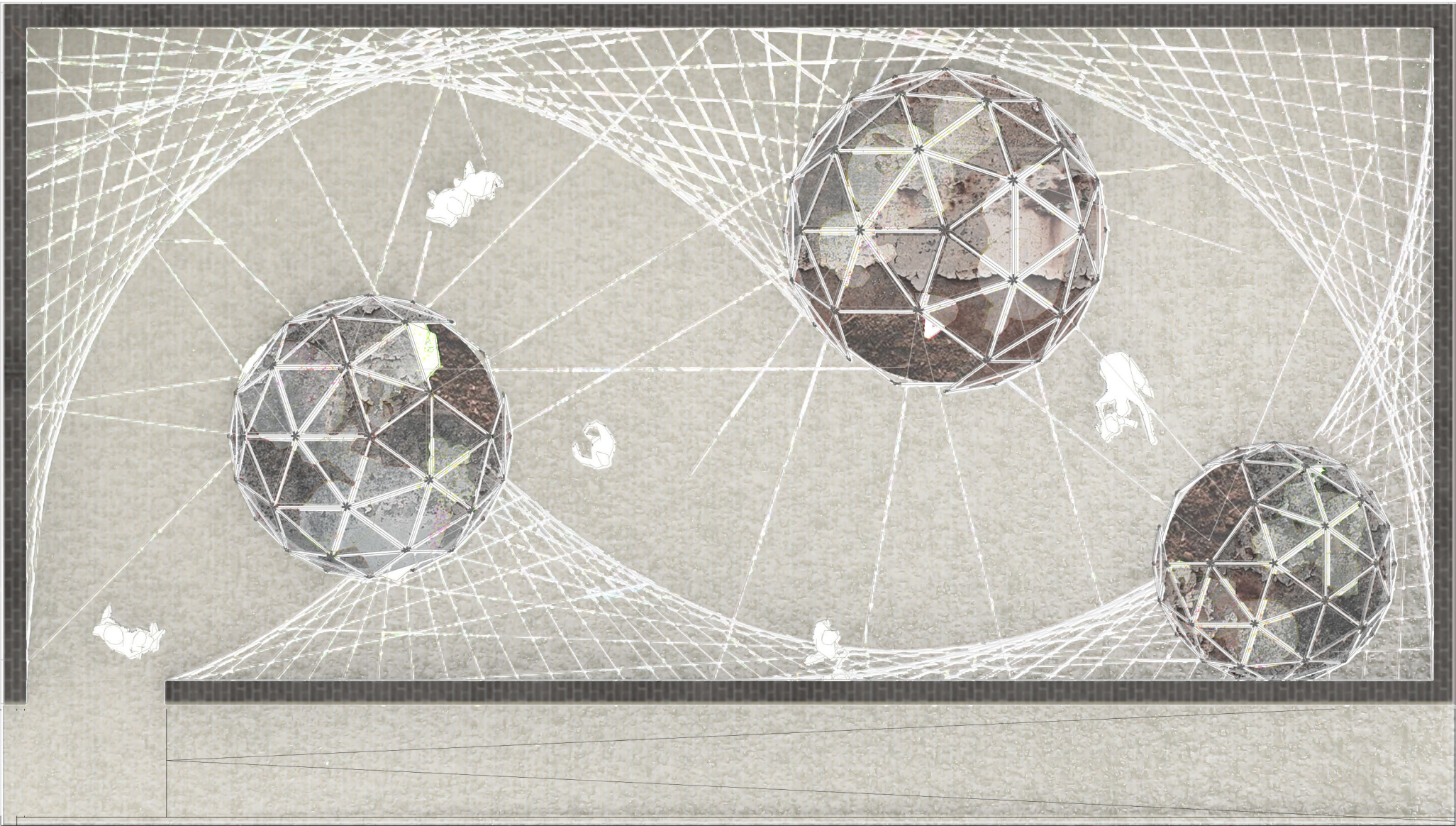
SURELY BY CHANCE, BUT NO DOUBT BY LUCK, SOME SPECIES OF FUNGI HAVE MORPHED ACCORDING TO CHANGES IN THE LANDS THAT WERE FILLING UP WITH PLASTICS AND POLLUTING RESIDUES, MAKING THESE THEIR FOOD. THUS, SINCE 2011, THE ABILITY OF MYCELIA TO TRANSFORM TOXIC HYDROCARBONS INTO CARBOHYDRATES THAT ALLOWED THE MUSHROOMS TO GROW HAS BEEN STUDIED.

IN FUNGAL REBIRTH, VISITORS IMMERSE THEMSELVES IN AN EXHUMED DIGESTION PROCESS, WALK THROUGH THE NETWORK OF MYCELIUM THAT HAS INFESTED THE EDGES OF THREE GEODESIC DOMES COVERED WITH POLYURETHANE THAT IS DECOMPOSED.

THE GEODESICS, SYMBOLIC REPRESENTATION OF THE DEFLAGRATIONS OF OUR PRESENT OF WARS, OF THE BOMBS THAT EXPLODING LEAVE IN THE SOIL ALL THE POLLUTANTS OF PRODUCTS AND DETERGENTS OF DAILY DOMESTICITY, ARE THE SYMBOL OF REBIRTH: THANKS TO THE MYCELIUM'S RECLAMATION WORK IN THE DOMES, FERTILITY HAS RETURNED. HEALING AND EDIBLE PLANTS GROW IN THE SHADOW OF DIGESTION.



SCHIZOPHYLLUM COMMUNE:  
ONE OF MUSHROOM SPECIES ABLE TO DIGESTED PLASTIC



PLAN 1:75

0 1 5m

ACHILLEA MILLEFOLIUM



ASARUM CANADENSE



EURYBIA MACROPHYLLA



GEUM RIVALE



VACCINIUM ANGUSTIFOLIUM

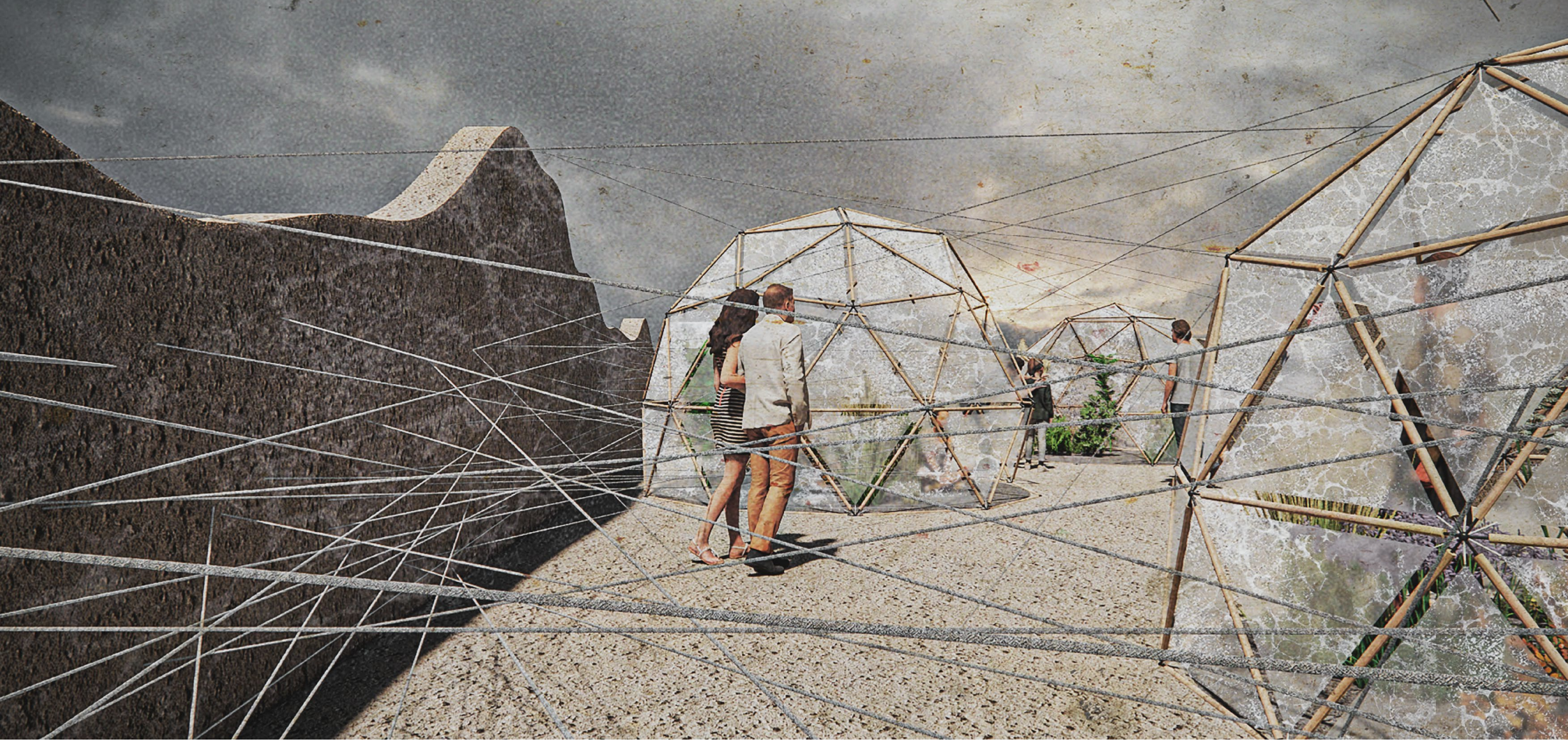


VIBURNUM EDULE

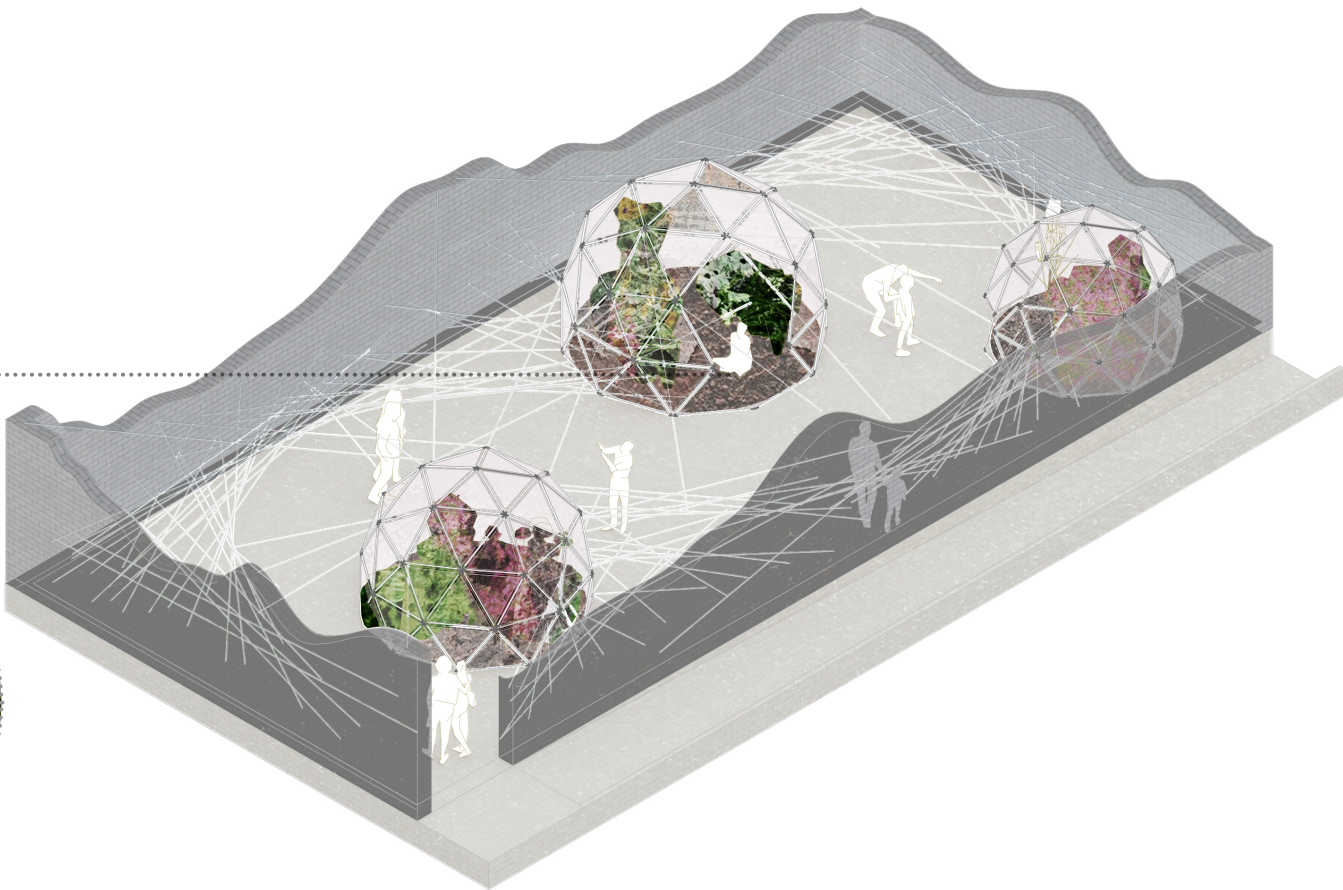
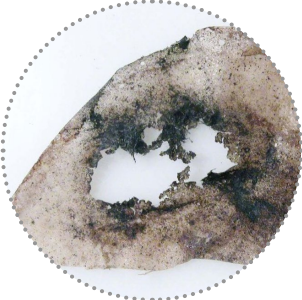


SELECTED PLANTS





MUSHROOM THAT HAS  
DIGESTED PART OF A PLASTIC

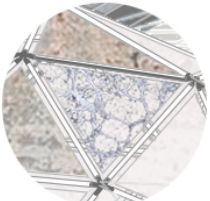


AXONOMETRY

POLYURETHANE FILM  
DIGESTION PROCESS



FIRST PHASE



SECOND PHASE



THIRD PHASE

