

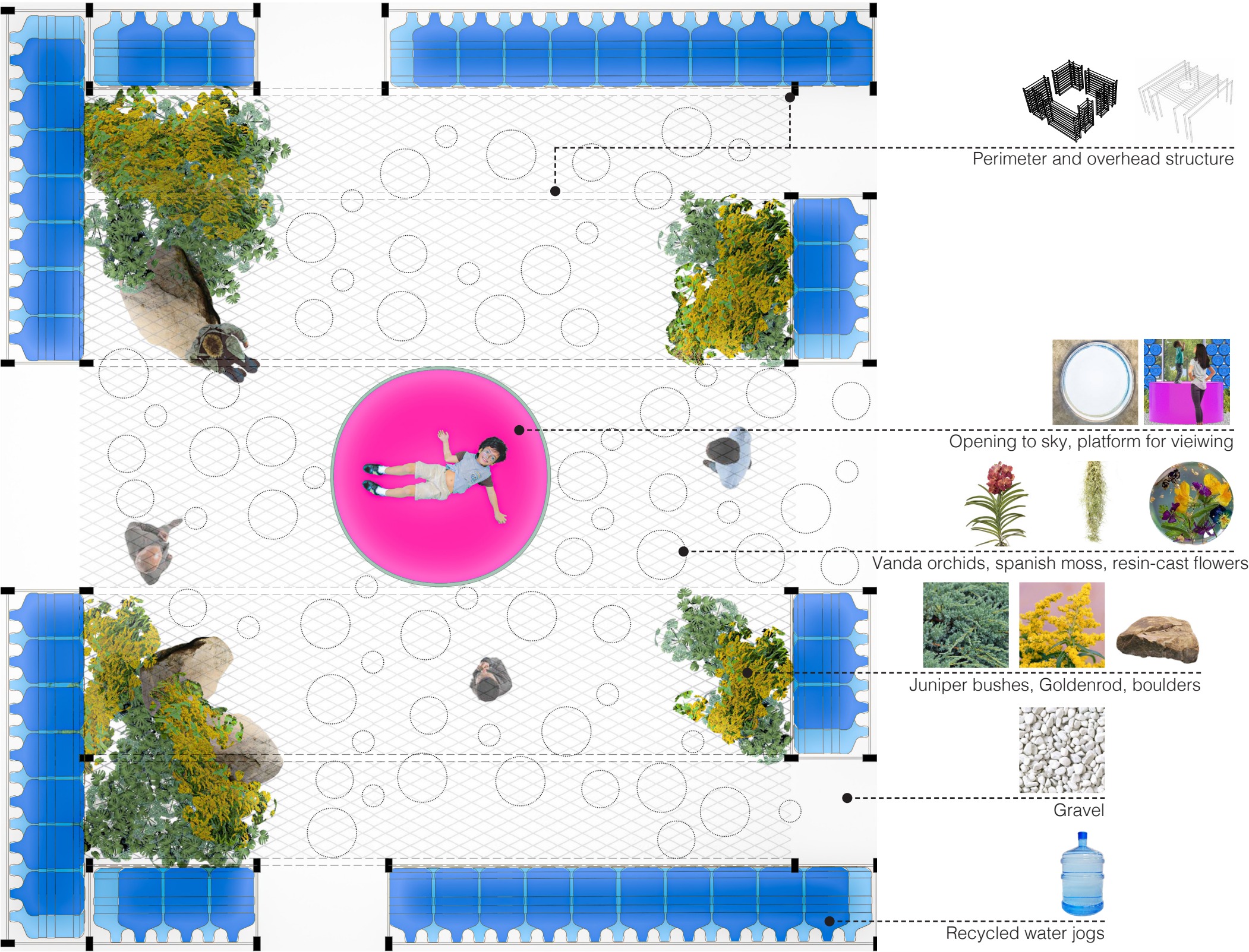
Bottled Eden

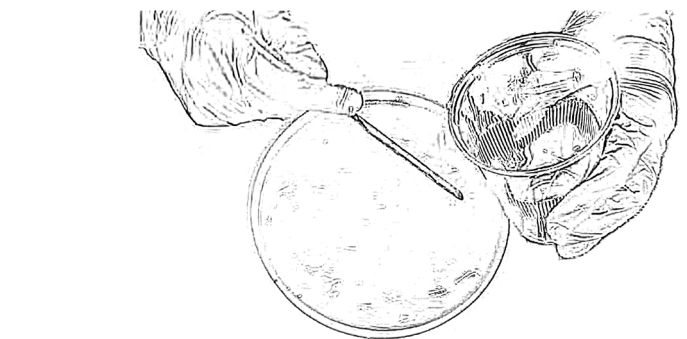
This garden unfolds as a living metaphor, inviting contemplation on the intricacies of our ecological choices, fostering a profound connection between humanity and nature.

A squared enclosure, reminiscent of the symbolic boundaries of the Garden of Eden, is filled with recycled water jugs. The garden speaks to the consequences of our pervasive use and misuse of plastic through the plasticity of its walls. Within this contained space, an overhead lattice adorned with air plants and flora encased in resin creates a serene interior. At the garden's heart lies a platform, an oasis for repose with an aperture above, revealing the vast expanse of the sky—an invitation for introspection.

The plants casted in resin become both guardian and storyteller—immortalizing the plants within—a testament to nature's enchantment and vitality when nurtured. Yet, it also serves as a poignant reminder of neglect and apathy, a crystallized representation of the potential fate awaiting nature should we fail in our protective stewardship.

The garden, designed with native shrubs and boulders meticulously placed for contemplation, provides opportunities for introspective moments, urging visitors to ponder the trajectory we are collectively forging.

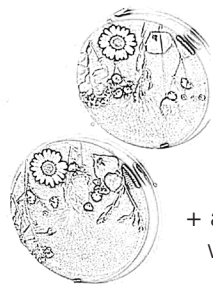




+ apply resin to molding.

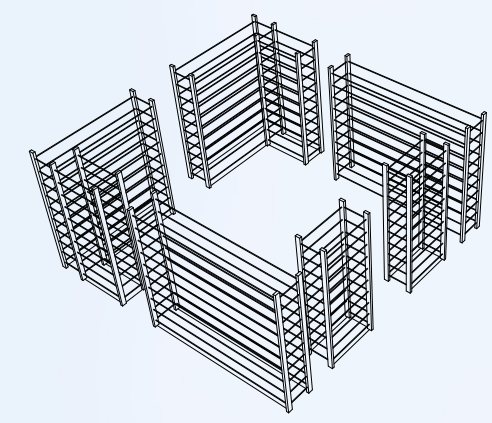
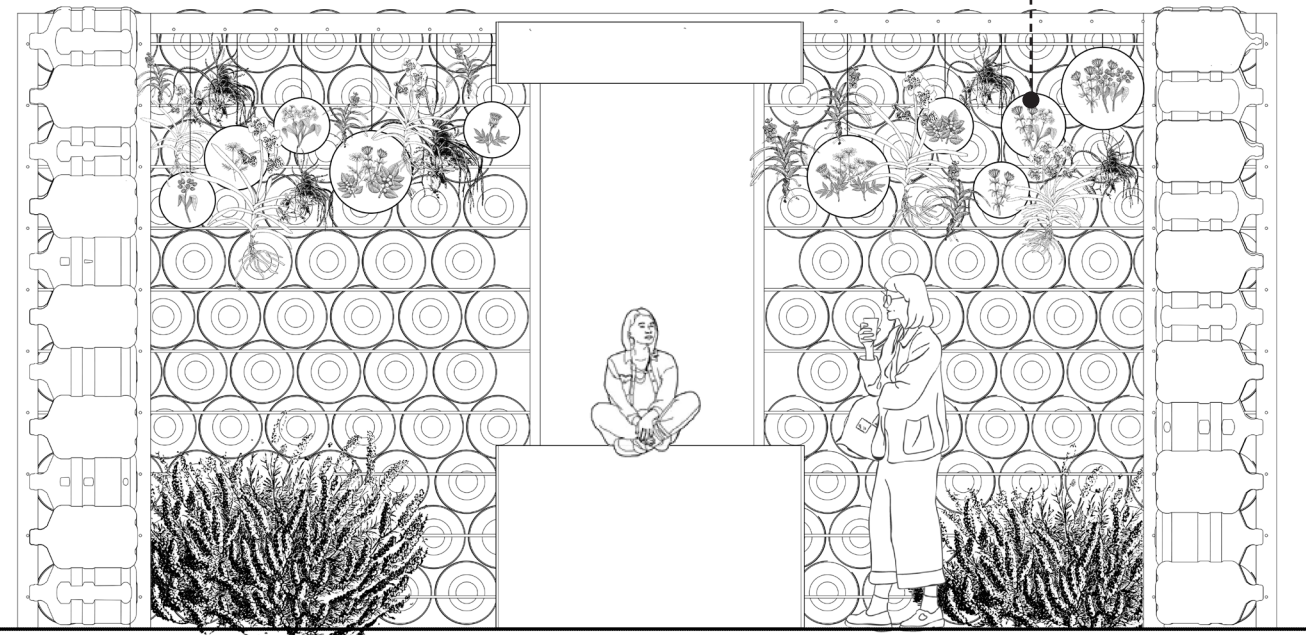


+ add flowers and plants to molding.

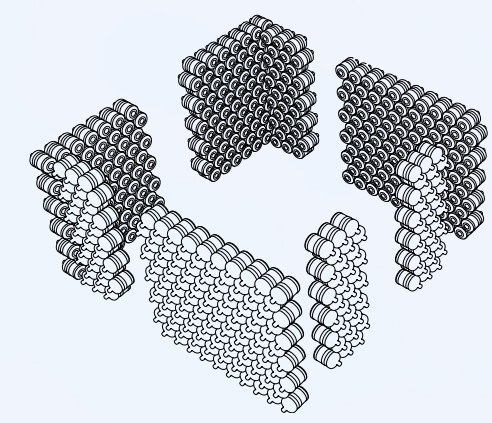


+ add resin slowly to cast in molding, wait to dry before removing.

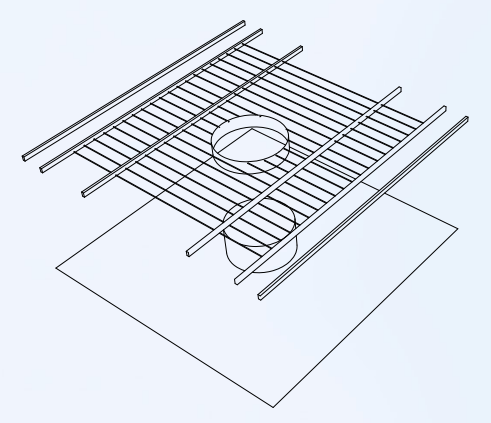
Resin-cast plants hangin from overhead structure-----



Enclosure



Recycled Bottles



Overhead Structure

