

CELLULAR MEMORY

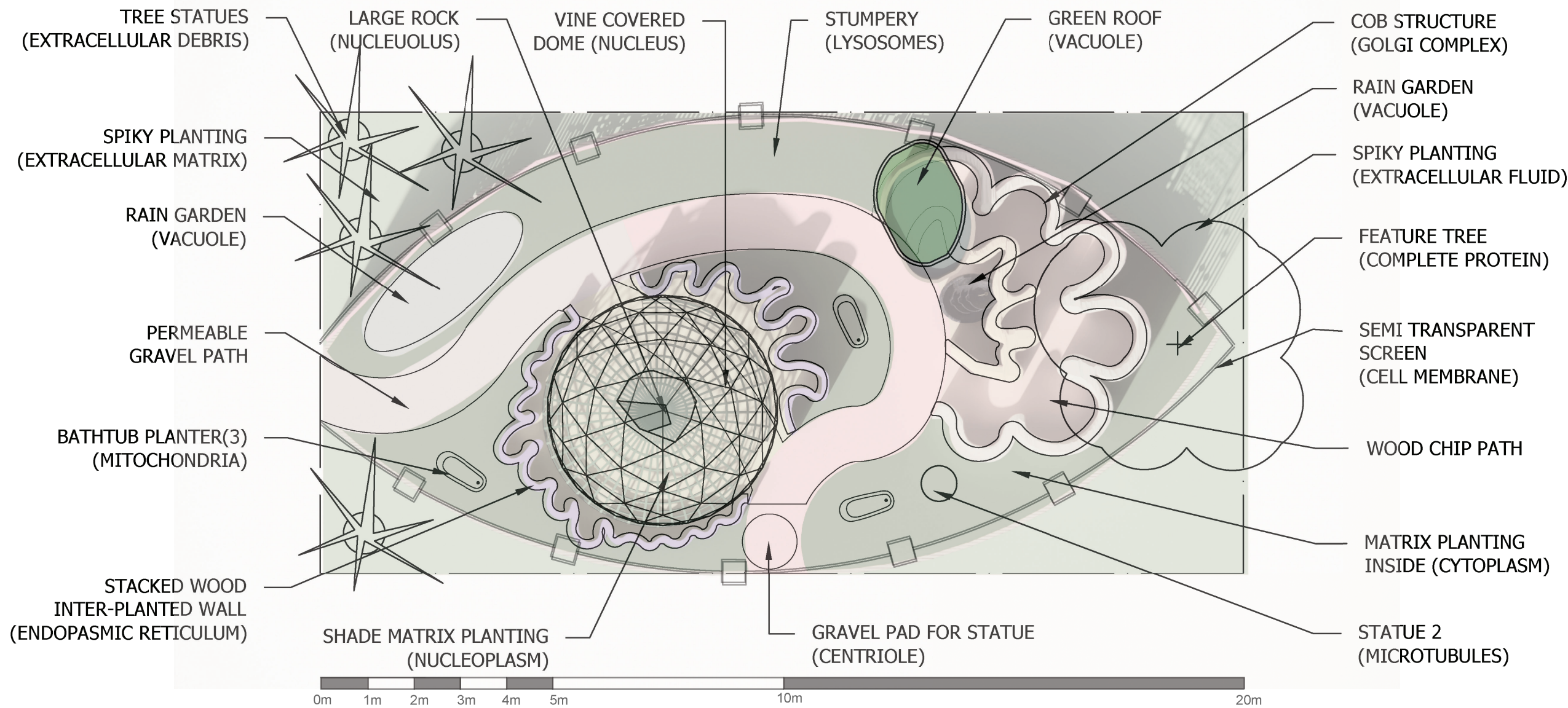
THE EXPERIENCE

The human drive to connect with nature is impacted by the toxins we consume and apply to the earth, influencing some to seek communion and others to detach. The Garden "Cellular Memory" connects us with our need for natural balance by projecting our internal cellular process into the garden.

Visitors will be able to explore this sustainable building and garden design, linking our inner cell working to external climate solutions using rain gardens, green roofs, and biological fencing. Follow the path and experience the journey of becoming a fully formed protein, ready to address extracellular ecological challenges. The garden features discreet QR codes and interpretive signage, allowing observers to engage on multiple levels.

From the outside, the garden appears protected by a semi-permeable membrane, while the inside offers an inner cellular experience of beauty and balance, or homeostasis, with sculptural representations of human cell organelles, designed with biomimicry and created using plants. Viewing the garden from above, shows the ever-inquisitive power of observation from all vantages when considering the "Ecology of Possibility".

LAYOUT PLAN



Amsonia x 'String Theory'



Geranium maculatum



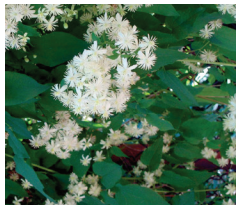
Deschampsia flexuosa



Waldsteinia fragaroides



Parthenocissus quinquefolia



Clematis virginiana



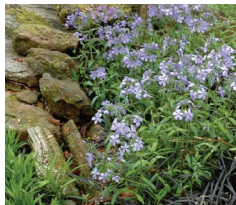
Festuca glauca



Tiarella cordifolia



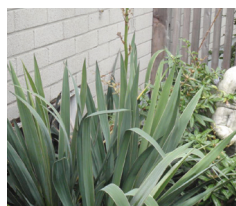
Phlox divaricata 'May Breeze'



Phlox divaricata



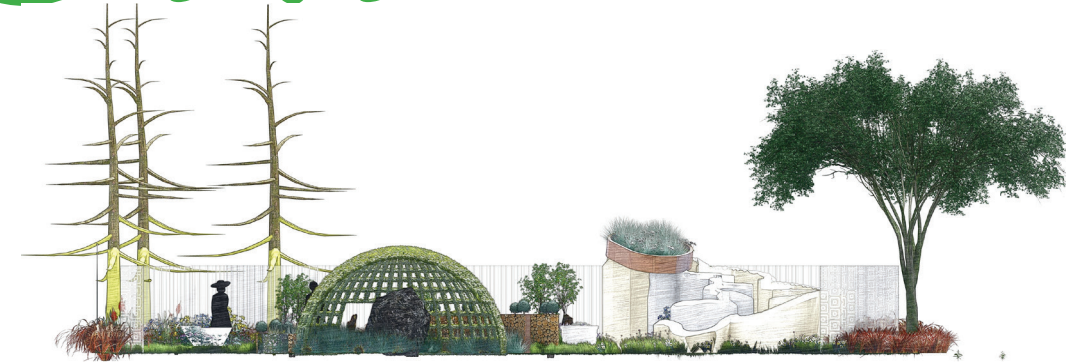
Panicum virgatum 'Blood Brothers'



Yucca filamentosa

CELLULAR MEMORY

ORTHOGRAPHIC VIEW



Section of Garden showing inside of dome.



Above: Perspective looking in through the entrance of the garden.
Below: Perspective looking back through the dome.

