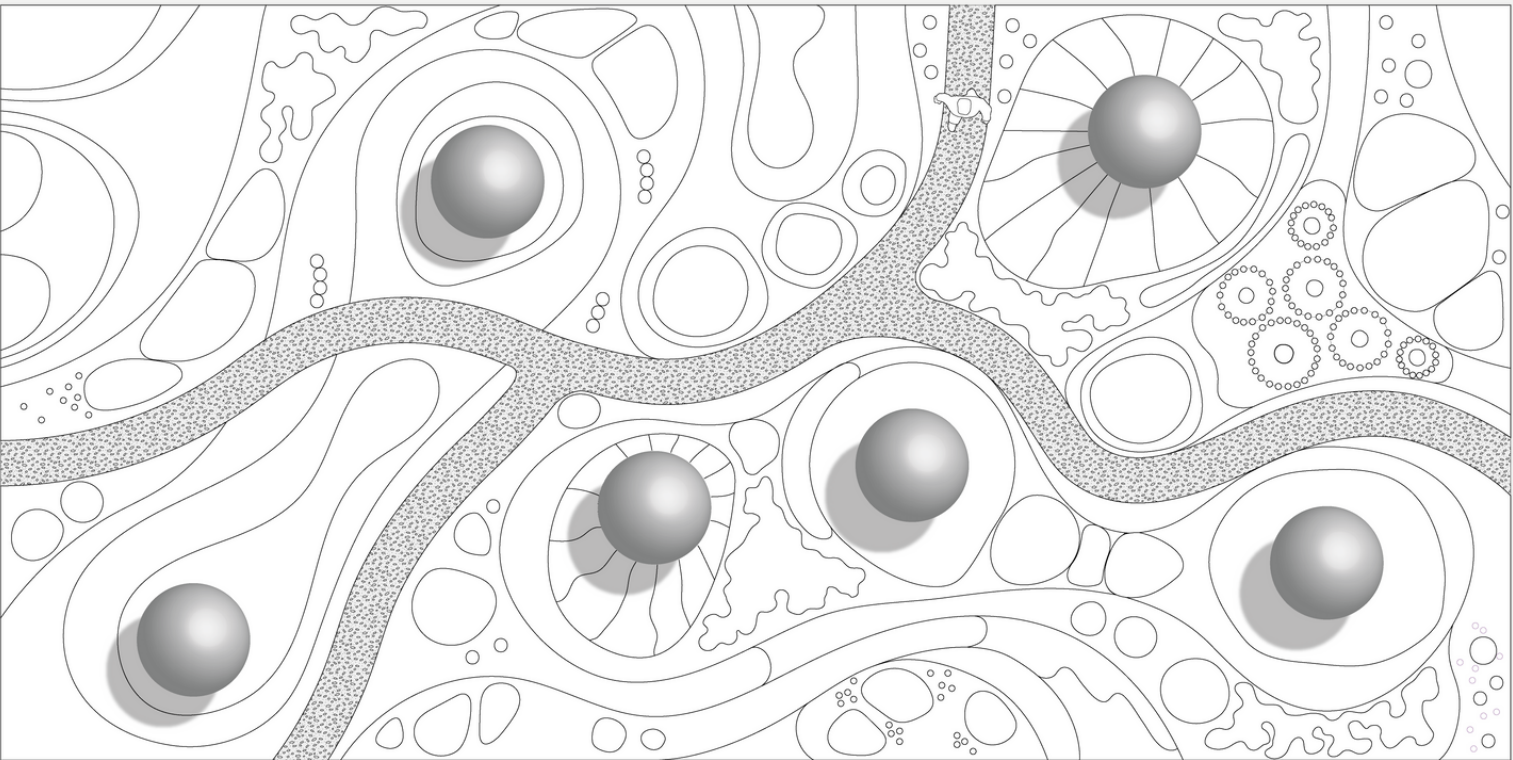


# Microcosm

The project draws inspiration from the appearance of biological cultures, microscopic observations of life fragments that we can't see with the naked eye. Our garden reproduces a microcosm on a larger scale, that symbolically brings visitors closer to nature, altering the ordinary perspective. We propose a design with organic forms, playing with the colors, heights and textures of plants. By disrupting our point of view, we believe it's possible to trigger a shift in thinking, to inspire new ways of approaching, entering, deepening our knowledge of ecology.

The visitor experiences an immersion in a multicolored and multitextured garden evolving throughout the seasons, exploring the mutability, caressing or being caressed while passing through, re-establishing close contact with plants. In the garden space, number of mirrored spheres are scattered around, evoking drops of water, an essential element for life, which in this era of climate change becomes even more relevant for its excess or scarcity. These spheres attract, reflect the surrounding landscape, stimulate thoughts and questions. The visitor is thus invited to recompose the harmonious and primordial relationship with ecology.



1:100



ref. image by Tracy Debenport



## List of suggested plants

- |                                   |   |
|-----------------------------------|---|
| <i>Agapanthus 'Northern Star'</i> | <i>Festuca Glauca</i>                     |
| <i>Allium Cristophii</i>          | <i>Helictotrichon Sempervirens</i>        |
| <i>Allium Giganteum</i>           | <i>Imperata Cylindrica 'Red Baron'</i>    |
| <i>Allium Sphaerocephalon</i>     | <i>Imperata Cylindrica 'Red Baron'</i>    |
| <i>Allium Stipitatum</i>          | <i>Limonium Vulgare</i>                   |
| <i>Buxus Sempervirens</i>         | <i>Miscanthus Sinensis</i>                |
| <i>Calamagrostis X Acutiflora</i> | <i>Miscanthus Sinensis 'Purpurascens'</i> |
| <i>Carex Testacea</i>             | <i>Muscari Paradoxum</i>                  |
| <i>Cortaderia selloana</i>        | <i>Panicum Virgatum</i>                   |
| <i>Craspedia Globosa</i>          | <i>Pennisetum Setaceum Rubrum</i>         |
| <i>Crataegus Monogyna</i>         | <i>Salvia Guarantica 'Blue Enigma'</i>    |
| <i>Deschampsia Cespitosa</i>      | <i>Schizachyrium Scoparium</i>            |
| <i>Echinacea Purpurea</i>         | <i>Sorghastrum Nutans</i>                 |
| <i>Echinops</i>                   | <i>Stipa Tenuissima</i>                   |
| <i>Erica Gracilis</i>             | <i>Verbena Bonariensis</i>                |





Microcosm

