



*Sambucus  
Canadensis*



*Lavandula*



*Abies Balsamea*



*Rosmarinus  
Officinalis*



*Acer Rubrum*



# Back to Nature

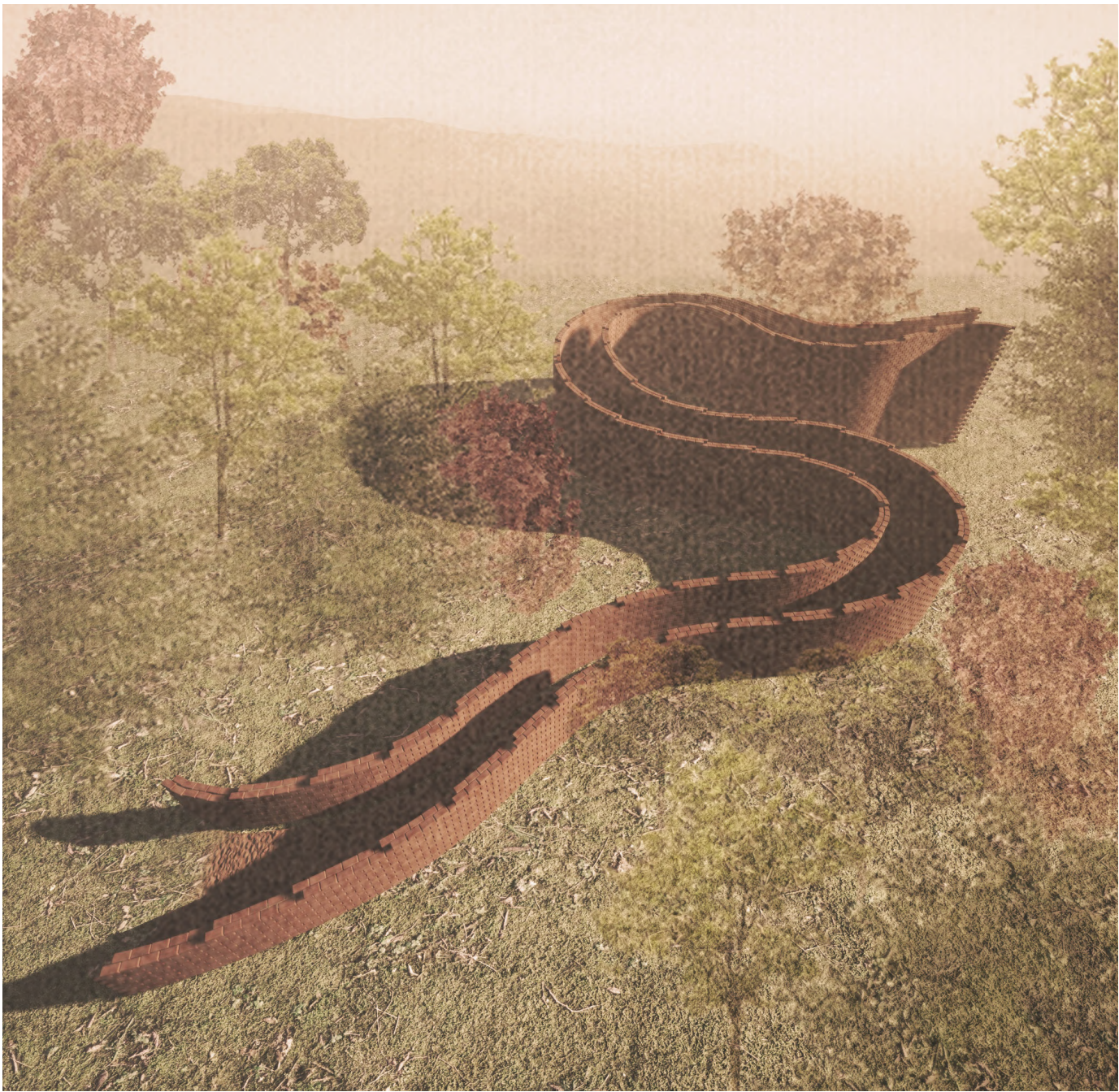
*Back to Nature*, an emotional journey, will guide you through an experience of nature's concealment and rediscovery. Two walls made of compostable bricks, starting low, introduce you to the garden. Gradually, these walls will rise, concealing nature and revealing only the tallest crowns in the sky. This gradual concealment, juxtaposed with the exit launching us back into nature, aims to raise awareness about the importance of new ecological solutions. A symbolic journey reflecting on the urgency to preserve and renew our connection with nature for *a sustainable future*.



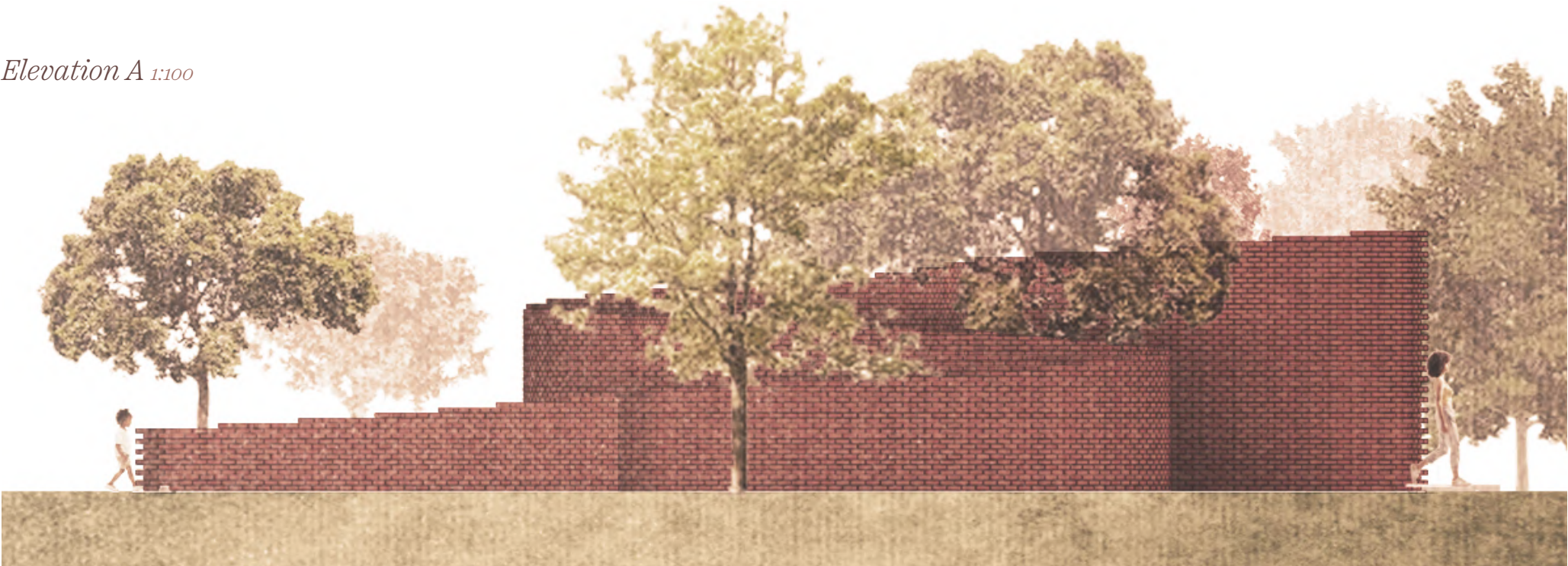


### Compostable Brick

The pavilion’s bricks, crafted from advanced sustainable materials like hemp and fungi, can be composted into garden fertilizer post-lifecycle. This innovation demonstrates environmental commitment and proves the effectiveness of sustainable construction technologies. The pavilion acts as a testing ground for these technologies, fostering environmental conservation and the advancement of efficient, responsible building practices.



### Elevation A 1:100



### Elevation B 1:100

