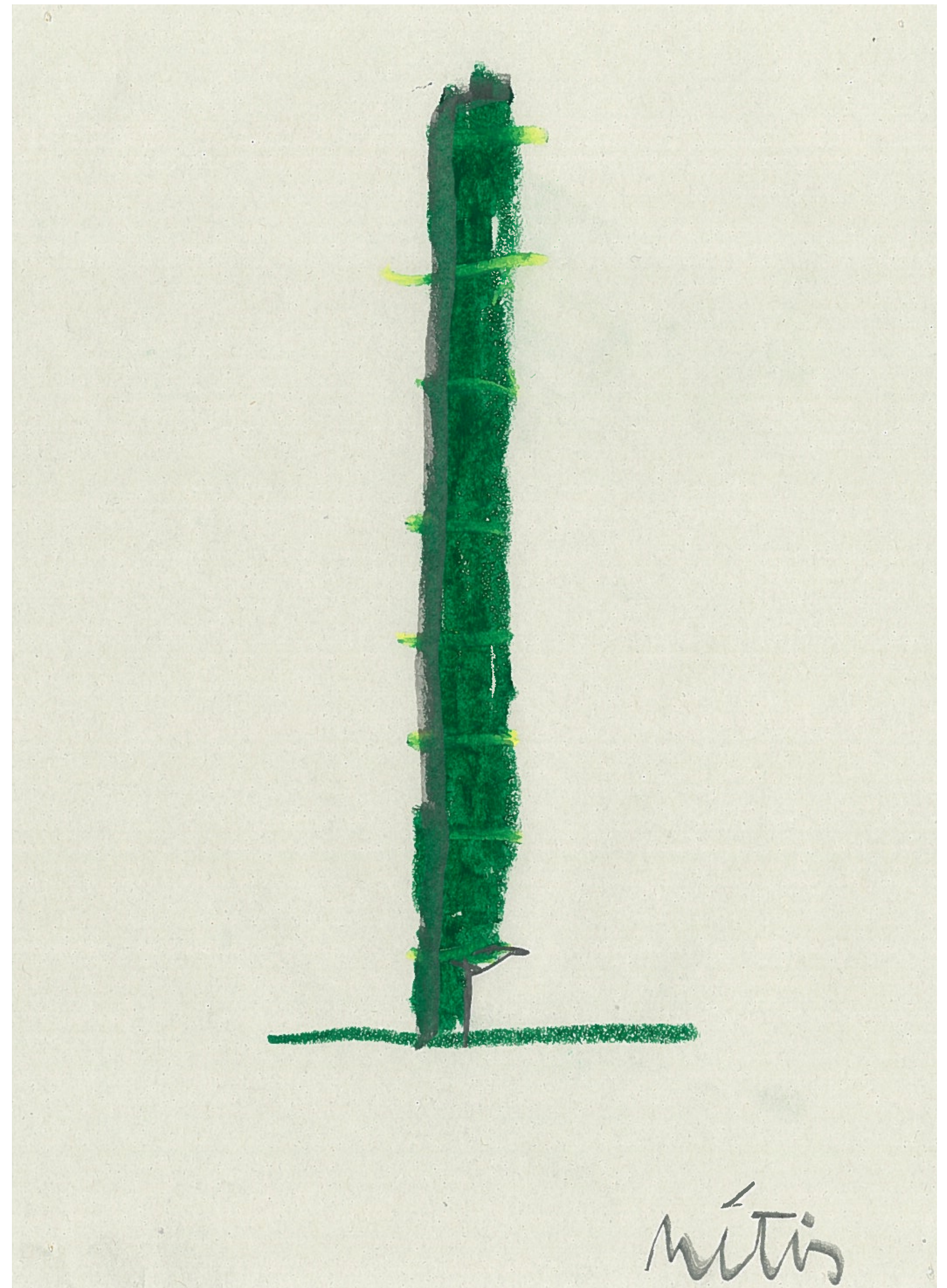


The sight's site

The “sight’s site” is a place of reflection and sensory awareness. With all the high demand for more resources and a vast range of creations the solution lies in quiet thinking. We defend that connecting people with the environment fosters appreciation and inspires conservation efforts promoting sustainable coexistence. Acknowledging the aluminum reflection and the verticality of the piece as key elements of a disruptive and contemplative momentum. Here the gaze is drawn upwards. We want to influence the visitor to observe the treetops, find out where the chirping birds are, what is the color of the leaves, understand the proportion between the human body and the life that is created around it. Each visitor has the right to a personal experience. The aluminum column stands in the gardens on the west-east axis, in this area flora such as white spruce and polar predominate, elements that generally reach 20 meters in height and the proposal grows parallel to these becoming part of this system. We suggest no additions to the existing flora in that way both worlds amplify each other’s beauty.

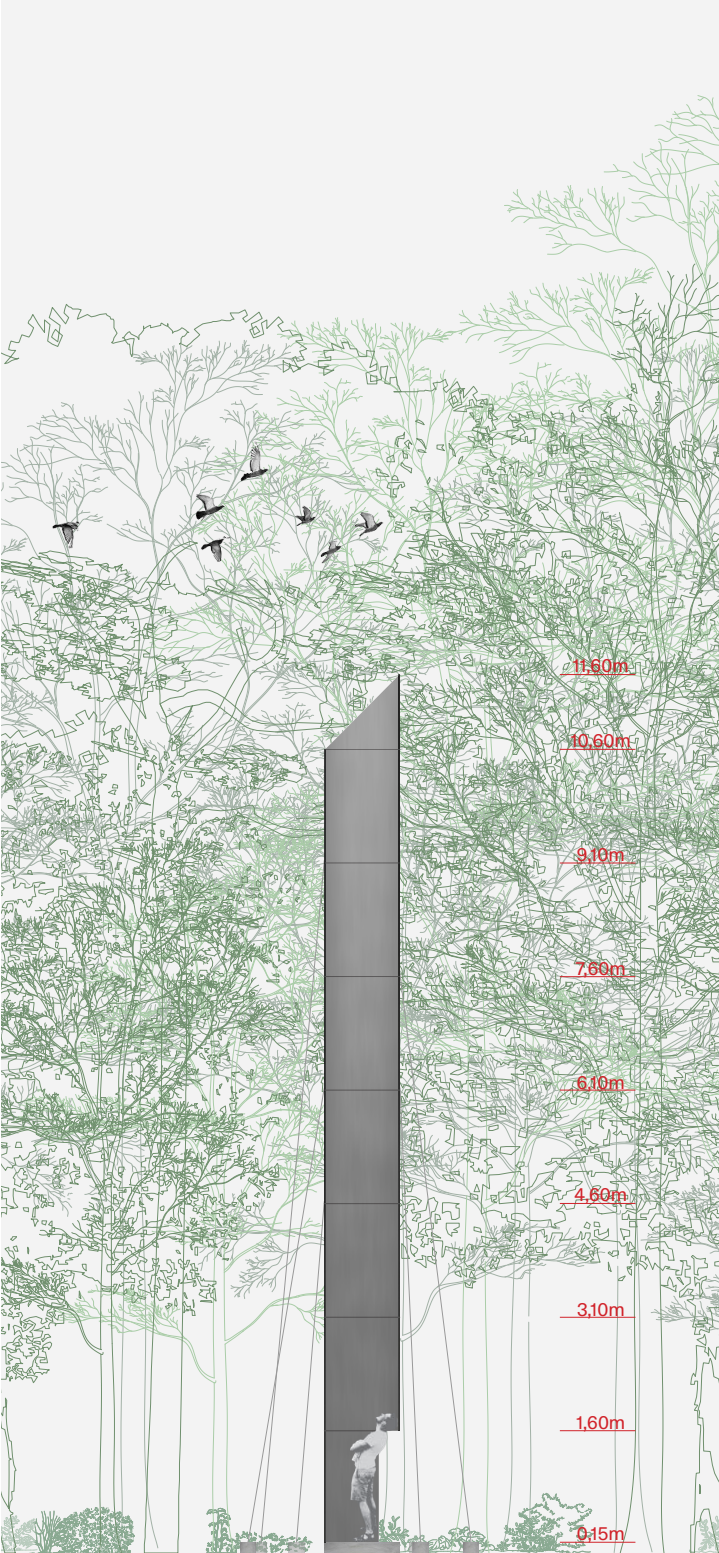


The sight’s site



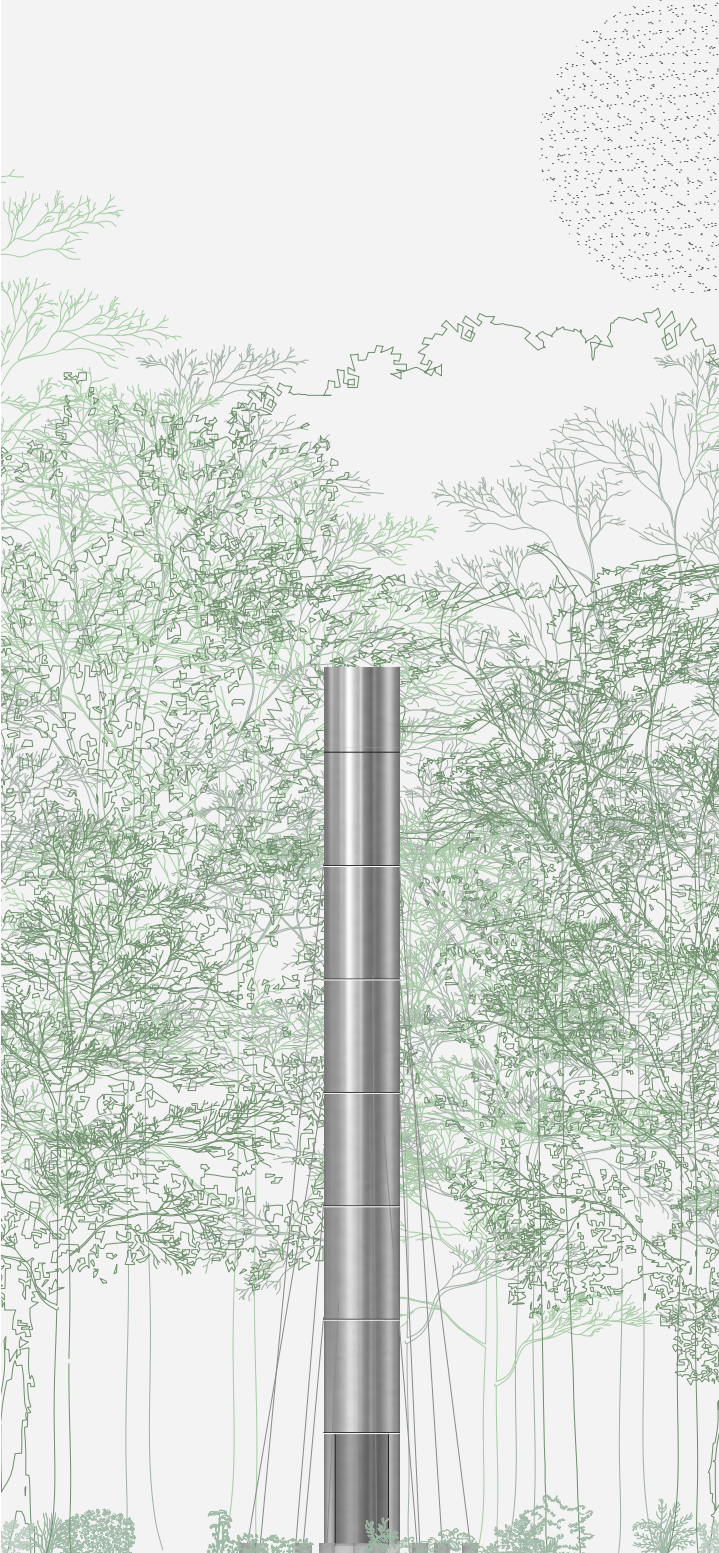
floorplan

There is a right site in the promenades of the gardens with the certain conditions for the piece to exist, to be implanted. From upclose the column will be between the trees, the visitor will find it on the side of the path almost hiding but hard to miss out. From a far it’s nature blends through the green plan giving just a glimpse of it’s presence.



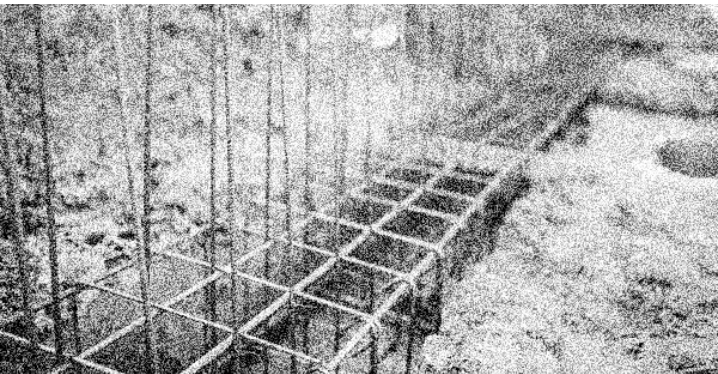
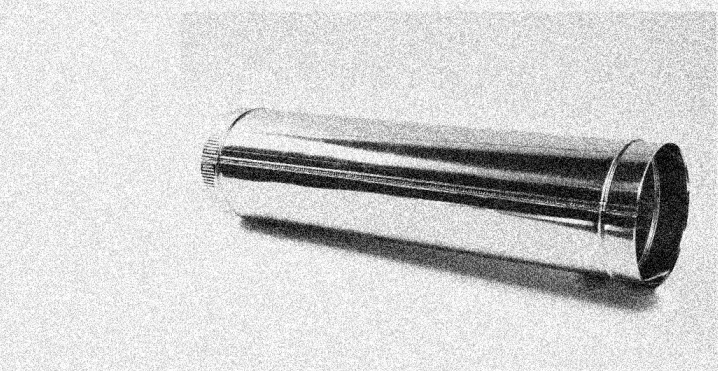
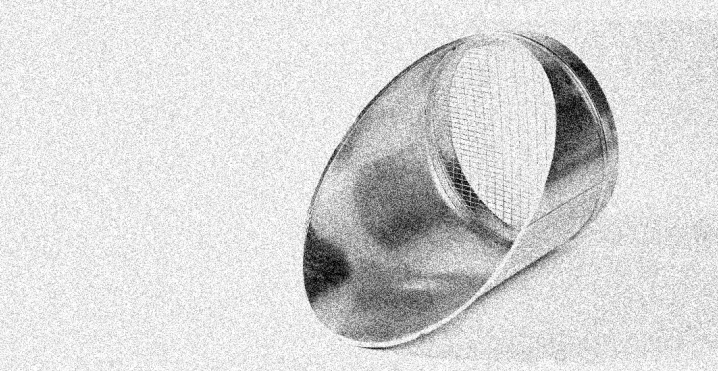
section

Inside the column the environment changes and the senses are inhanced. The sounds and colors are reflected on the aluminium walls amplifying the way our body feels inside this capsule. The shiny surface gives a diferente experience to the visitors, they can see themselves on the reflection but most importantly they can see the green from the tree tops mixed with skie’s blue with the extra gift of natures soundtrack.



facade

The reflective cover brings attention to the piece making it an outsider but at the same time invinting to visit. Getting closer is possible to see the structure and how gravity is used as an ally pulling the cables to the ground. And even though the eyes are tricked to look up the streng of the proposal is forced down, criating roots in the forest. The chopped roof allows a bigger receiving surface of the various elements.



system

The production of the piece was thought in a practical sense to respond to time and budget. A constellation of concrete footings measuring 20x20x50cm will be created on the ground to install the clamps for fixing the steel cables. The tubes are from mechanical ventilation with standard dimensions and fixings. The clamps are fixed with welding points connecting the steel cables to the floor, ensuring the necessary layers of safety.